



FISU
WORLD
UNIVERSITY
GAMES
WINTER



TECHNICAL HANDBOOK

Alpine Skiing

Version 05/12/2024



TORINO, ITALY
13 - 23 JANUARY 2025

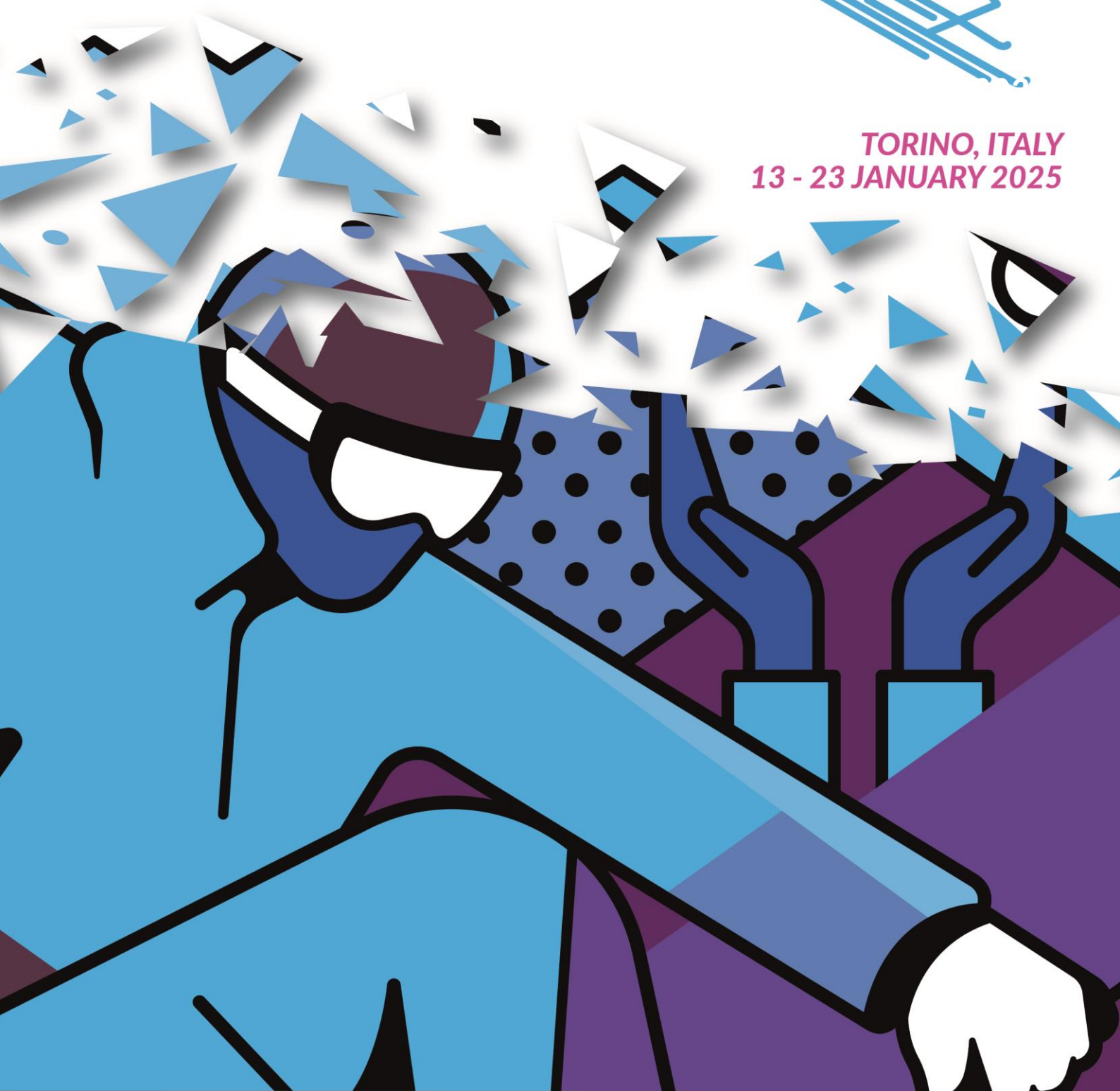


TABLE OF CONTENTS

1. Welcome Messages.....	1
2. Abbreviations	3
3. FISU International Technical Committee	4
4. General Information	5
4.1 Torino 2025 FISU World University Games	5
4.2 Competition Schedule	5
4.3 Opening and Closing Ceremonies.....	5
5. Competition Information.....	6
5.1 Technical Committee	6
5.2 International Technical Officials.....	6
5.3 Competition Structural Chart.....	7
5.4 Alpine Skiing Technical Regulation.....	8
5.4.1 Entries.....	8
5.4.2 Jury Composition.....	9
5.4.3 Protest and Appeal.....	9
5.5 Para-Alpine Skiing Technical Regulations.....	9
5.5.1 Entries.....	10
5.5.2 Jury Composition.....	11
5.5.3 Protest and Appeal.....	11
5.6 Competition Format.....	11
5.6.1 Draws SG, GS and SL.....	11
5.6.2 Super-G (SG)	12
5.6.3 Giant Slalom (GS)	12
5.6.4 Slalom (SL).....	12
5.6.5 Alpine Combined (AC)	12
5.6.6 Mixed Team Parallel (TP)	12
5.6.7 Team Entry	12
5.6.8 Team Ranking	13
5.7 Competition and Training Venue Information.....	14
5.7.1 General Information.....	14
5.7.2 Venue Layouts.....	15
5.7.3 Slopes Technical Data.....	15
5.8 Day-by-Day Schedule.....	15
5.8.1 Ceremonies	19
5.8.2 Training.....	19



5.8.3 Reserve Days	20
5.8.4 General Technical Meeting	20
5.9 Equipment.....	20
5.9.1 Competition Uniforms & Equipment	20
5.9.2 Equipment Control	21
5.9.3 Storage and Waxing Rooms.....	21
5.9.4 Waxing Room Equipment.....	21
5.9.5 Fluor Control.....	22
5.10 Doping Control.....	22
5.10.1 List of Prohibited Substances.....	22
5.10.2 Testing.....	22
5.10.3 Doping Control Stations	23
5.10.4 Therapeutic Use Exemptions (TUE).....	23
5.10.5 Structure.....	24
5.11 Mascot and Medal Ceremonies	24
5.11.1 Mascot Ceremony.....	24
5.11.2 Medal Ceremony	24
5.11.3 Diploma of Honor	25
5.12 Media Interviews.....	25
5.13 Sport Information Services.....	26
5.13.1 Online Sport Information Services.....	26
5.13.2 Sport Information at the Venue.....	26
5.13.3 Sport Information Distribution	26
6. Service Information	27
6.1 Accreditation.....	27
6.2 Radio Frequency Control	27
6.3 Insurance and Responsibilities.....	28
6.4 Transportation	28
6.4.1 Transportation System for Athletes and Team Officials (TA).....	28
6.4.2 Transportation Service for All Accredited Stakeholders – Transport connect (TC).....	28
6.5 Food and Beverages.....	28
6.5.1 Mealtimes	28
6.5.2 FNB Services at the Competition Venues	29
6.6 Medical Services.....	29
6.6.1 Conditions of Medical Assistance.....	29
6.6.2 Medical Support Structure	29



6.6.3 Medical Support in the Accommodation Sites	29
6.6.4 Dedicated Hospitals and Specialized Medical Facilities.....	29
6.7 Weather	30
7. OC Contacts.....	30
8. Appendices	30
8.1 Venue Layouts.....	30
8.1.1 Venue Plans.....	30
8.1.2 Overview Slopes	31
8.1.3 Venue Layouts.....	32
8.2 Geographical Overview Venues.....	36



1. WELCOME MESSAGES

Dear delegates,

Dear friends and colleagues,

The 2025 FISU World University Games Winter in Torino, Piemonte (Italy) is drawing inexorably closer. "Torino" is a name that has a unique and incomparable significance for FISU. Not only was FISU founded in this beautiful city in 1949, but Torino also hosted the first ever Summer Universiade ten years later in 1959. Moreover, Primo Nebiolo, FISU President from 1961 to 1999, also contributed to strongly linking Torino and FISU together.

Having held the Winter Olympics in 2006, Torino also hosted the Winter Universiade in 2007. Now, we are all preparing to return to the birthplace of both FISU and the Universiade, but also to the mountains in Sestriere, host of the 1966 Winter Universiade and an important cluster for the upcoming Torino 2025 FISU World University Games Winter.

I am very grateful to the Organising Committee of the Torino 2025 FISU Games Winter, but also to the political, academic and sport authorities who are making this student sporting highlight - set from 13 to 23 January 2025 - possible. It is thanks to their unwavering commitment and belief in the values of university sport that these FISU Games will take place.

I wish you all a smooth and successful preparation for your mission at the Torino 2025 FISU World University Games Winter and look forward to welcoming you to the opening ceremony in Torino on 13 January 2025.



Leonz EDER

President of the International University Sports Federation



*Dear Delegates,
Dear Student-Athletes, Coaches, Dignitaries, and Presidents of Member Federations,
Dear all,*

It is a great pleasure for me to present the Technical Handbook for the Torino 2025 FISU World University Games Winter.

This handbook contains all the necessary information about the Games and the technical aspects for each sport, serving as a comprehensive guide for all participants and delegations involved.

The Torino 2025 FISU World University Games Winter will feature a total of 11 sports, divided into snow and ice disciplines.

However, what fills me with particular pride is that, for the first time in the history of the FISU World University Games Winter, we will be hosting two parasports competitions: Para Alpine Skiing and Para Cross-Country Skiing.

This event promises the perfect setting for high-level competition across six stunning areas of Piedmont, an Italian region with a rich history in both sports and science: Turin, Sestriere, Bardonecchia, Pragelato, Pinerolo, and Torre Pellice.

I am looking forward to welcoming the big family of the Winter University Sports in Piedmont in just a few months' time!

A handwritten signature in black ink, reading "Alessandro Sciretti". The signature is written in a cursive, flowing style.

*Alessandro Sciretti
President of Torino 2025 FISU World University Games*



2. ABBREVIATIONS

Abbreviation	Name in Full
AC	Alpine Combined
ADAMS	Anti-Doping Administration and Management System
ALP	Alpine Skiing
BRD	Bardonecchia
CIC	FISU International Control Committee
CM	Competition Manager
CT	FISU Technical Committee
DbD	Day by Day Schedule
DNF	Did Not Finish
DNQ	Did Not Qualify
DNS	Did Not Start
DSQ	Disqualified
FIS	International Ski and Snowboard Federation
FISI	Italian National Ski Federation
FISU	International University Sports Federation
FNB	Food & Beverage
FoP	Field of Play
GS	Giant Slalom
GTM	General Technical Meeting
HoD	Head of Delegation
ICR	International Competition Rules
IF	International Federation
ITC	International Technical Committee
ITO	International Technical Official
MAC	Main Accreditation Centre
MED	Medical Services



MLZ	Melezet
MXD	Mixed Zone
NADO	National Anti-Doping Organization
NTO	National Technical Official
NUSF	National University Sports Federation
OC	Organizing Committee
SG	Super-G
SID	Sports Information Desk
SL	Slalom
SMT	Campo Smith
T&S	Timing and Scoring
TCC	Technical Committee Chair
TCM	Team Captain's Meeting
TD	Technical Delegate
TO	Technical Official
TP	Mixed Team Parallel
TUE	Therapeutic Use Exemptions
VM	Venue Manager
WADA	World Anti-Doping Agency

3. FISU INTERNATIONAL TECHNICAL COMMITTEE

Position	First Name	Last Name	Country
FISU TCC ALP / PARA-ALP	Matjaz	KRANJC	SLO
FISU TCC BTH	Ondrej	RYBAR	CZE
FISU TCC CCS / PARA-CCS	Zofia Stefania	KIELPINSKA	POL
FISU TCC CUR	Scott	ARNOLD	CAN
FISU TCC FRS	Magnus	FERRY	SWE
FISU TCC FSK	Dingding	LIU	CHN



FISU TCC IHO	Reto	BERTOLOTTI	SUI
FISU TCC IHO	Igor	NEMECEK	SVK
FISU TCC SBD	Ola	SUNDEKVIST	SWE
FISU TCC SMO	Zuzana	RYCHLIKOVÀ	SVK
FISU TCC SOR	Markku	VAUHKONEN	FIN
FISU TCC STK	So Hee	KIM	KOR

4. GENERAL INFORMATION

4.1 Torino 2025 FISU World University Games

Date: 13 - 23 January 2025

Location: Turin, Italy

Sports Program: 11 sports, 90 medal events

Venues: 11 venues

4.2 Competition Schedule

https://wugtorino2025.com/wp-content/uploads/2024/11/competition_schedule.pdf

4.3 Opening and Closing Ceremonies

Opening Ceremony

Date: 13 January 2025

Location: Inalpi Arena, Corso Sebastopoli, 123, 10134 Torino TO

Beginning of Ceremony: 19:30

Closing Ceremony

Date: 23 January 2025

Location: Piazzetta Reale (Torino)

Beginning of Ceremony: 20:00



5. COMPETITION INFORMATION

5.1 Technical Committee

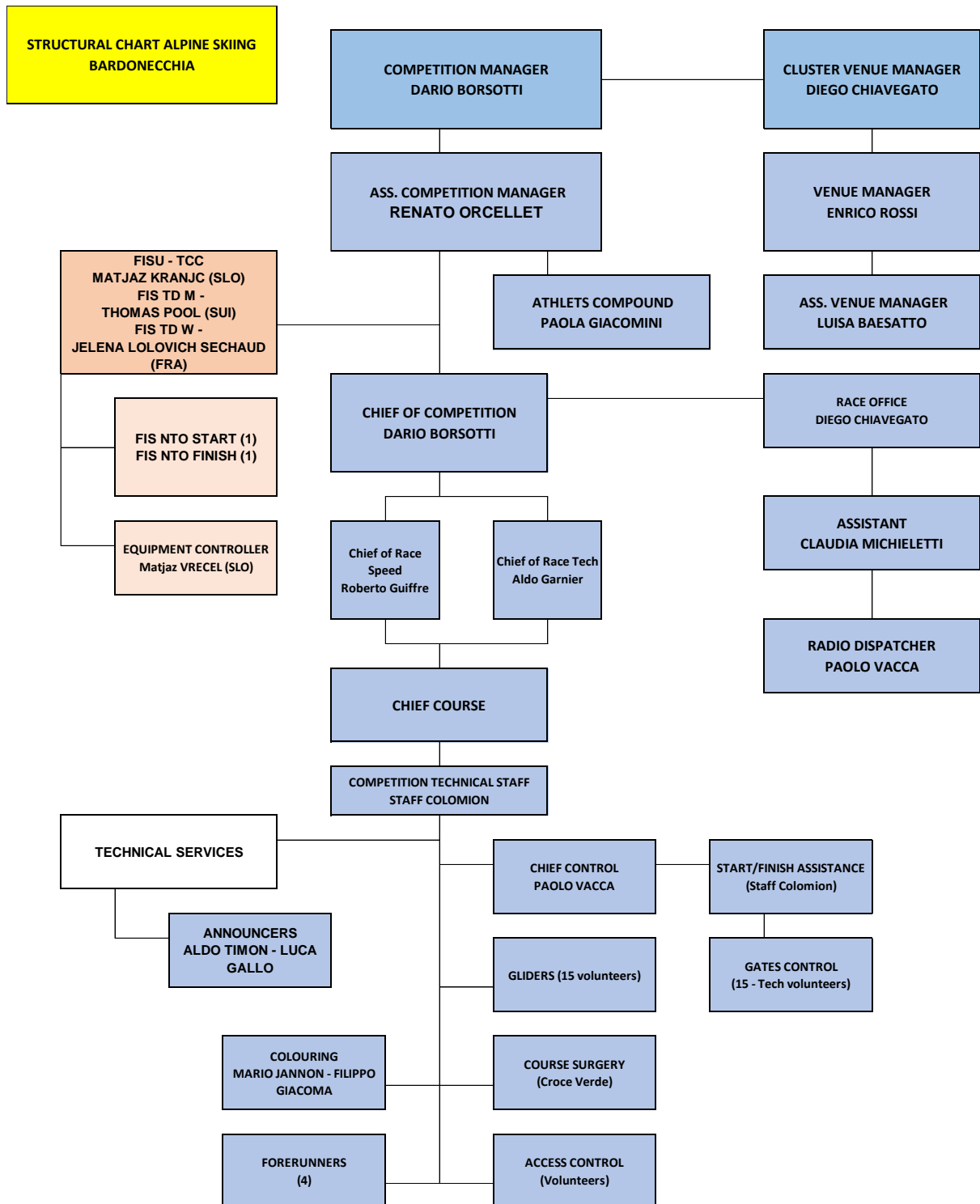
FISU Technical Committee Chair	Matjaz KRANJC (SLO)
FIS Race Director for Para Alpine	Anja SKUTELJ (CRO)
FIS Technical Delegate (M)	Thomas POOL (SUI)
FIS Technical Delegate (W)	Jelena LOLOVIC SECHAUD (FRA)
Competition Manager	Dario BORSOTTI (ITA)
Chief of Race Speed/Tech.	Dario BORSOTTI (ITA)
Chief of Competition Speed	Roberto GUIFFRE (ITA)
Chief of Competition Tech.	Aldo GARNIER (ITA)
Race Secretary	Diego CHIAVEGATO (ITA)

5.2 International Technical Officials

FIS Alpine Equipment Controller	Matjaz VRECEL (SLO)
---------------------------------	---------------------



5.3 Competition Structural Chart



5.4 Alpine Skiing Technical Regulation

The Alpine Skiing events will be organised in accordance with the most recent technical regulations of the International Ski and Snowboard Federation (FIS), except when specifically amended by these regulations or by the FISU Games International Technical Committee (FISU Games ITC).

The programme and duration of the competitions will be fixed by the FISU Executive Committee in agreement with the Organising Committee and the FISU Games ITC. In principle, the programme will last eight days and will include the following events:

Men	Women
Alpine Combined (AC)	Alpine Combined (AC)
Super-G (SG)	Super-G (SG)
Giant Slalom (GS)	Giant Slalom (GS)
Slalom (SL)	Slalom (SL)
Mixed Team Parallel (TP)	

5.4.1 ENTRIES

Each country is authorized to enter a maximum of 12 athletes per gender (total 24 athletes).

In each event, each country may enter:

- Individual events: maximum 6 athletes (per gender)
- Team events:
 - Mixed Team Parallel: maximum 1 team per country composed of 2 W and 2 M.

Only athletes with an active FIS code are allowed to participate in each Alpine Skiing event.

To be eligible for participation in Super-G and Alpine Combined the athlete must have FIS points in Super-G, Alpine Combined or Downhill.

If an athlete does not yet appear in the valid FIS points list, he may only participate on the condition that an official result list containing his previous results is presented.

Entries are controlled by the Organiser and the FIS Technical Delegate.

At the first General Technical Meeting, the Head of Delegation or his/her representative shall confirm and sign the official entry list of athletes.

Only with an accreditation card approved by the FISU International Control Committee (CIC) can an athlete be considered for the draw of a starting list and be entitled to participate in any of the competitions.



5.4.2 JURY COMPOSITION

For all events (men and women) the Jury must be nominated with the following members:

- TD FIS (one for men and one for women nominated by FIS)
- Referee (FISU Technical Committee Chair nominated by FISU, for Para events Technical Advisor for Para Alpine Skiing, nominated by FISU)
- Assistant Referee (only for speed events) proposed by FISU and nominated by the TD FIS
- Chief of Race (nominated by Organising Committee)

The second nominated TD FIS could be proposed to act as Video Controller or Assistant Referee for SG.

All Jury members must be able to communicate with the local Organising Committee and with all Jury members by radio during the competitions (ICR 601.4.1.5) in English.

Connecting Coach: The Jury has the right to nominate a Connection Coach at the Teams Captains meeting who will work together with the jury and the other coaches but will not be Jury member.

5.4.3 PROTEST AND APPEAL

Any protest of a sport or disciplinary nature must reach the Jury according to the regulations laid down by the FIS. Such protest must be accompanied by a deposit in cash of CHF 100 or equivalent in the currency of the Organizing Committee (FIS ICR Art. 644; 644.4). This deposit will be returned if the protest is upheld.

Each Head of Delegation or his/her deputy is authorized to lodge an appeal against the decision of the Jury. This appeal must be submitted in writing to the Jury of Appeal or competent authority in accordance with the FIS regulations. Any decision of the Jury of Appeal or equivalent authority of a sport is final and must be reported immediately to the Head of Delegation of the country concerned.

Any sport disciplinary situation which cannot be satisfactorily resolved by the Sport Technical Committee (TC) and the sport-specific disciplinary regulations will be reported to the FISU Disciplinary Committee for further action to be taken. Where appropriate, a report will also be sent to FIS.

5.5 Para-Alpine Skiing Technical Regulations

The Para-Alpine Skiing events will be organized in accordance with the most recent Classification Rules and Regulations and FIS Para Alpine Skiing International Competition Rules (ICR) of the International Ski and Snowboard Federation (FIS), except when specifically amended by these regulations or by the FISU Games International Technical Committee (FISU Games ITC).



The program and duration of the competitions will be fixed by the FISU Executive Committee in agreement with the Organizing Committee and the FISU Games ITC. In principle, the program will last eight days and will include the following events:

Men	Women
Super-G (SG)	Super-G (SG)
Giant Slalom (GS)	Giant Slalom (GS)

In line with the ICR, athletes in different Sport Classes will be grouped in the following categories:

Category	Sport Classes
Vision Impaired	B1, B2, B3
Standing	LW1, LW2, LW3, LW4, LW5/7-1, LW5/7-2, LW5/7-3, LW6/8-1, LW6/8-2, LW9-1, LW9-2
Sitting	LW10-1, LW10-2, LW11, LW12-1, LW12-2

5.5.1 ENTRIES

In each event, each Country may enter:

- Super-G: maximum 6 athletes (per gender)
- Giant Slalom: maximum 6 athletes (per gender)

Only Para athletes with an active FIS Code (Para athletes must be registered in the FIS Para Data Management System) are allowed to participate in each Para Alpine Skiing event.

To be eligible for participation in Super-G (SG) and Giant Slalom (GS) the athlete must have FIS points in Super-G or Downhill and Giant Slalom. Athletes must be internationally classified with a Sport Class Status Confirmed (C). Review (R) with a Fixed Review Date 2025 or later (i.e. Review 2025 or later).

Entries are controlled by the Organiser and the FIS Technical Delegate.

At the first General Technical Meeting, the Head of Delegation or his/her representative shall confirm and sign the official entry list of athletes.

Only with an accreditation card approved by the FISU International Control Committee (CIC) can an athlete be considered for the draw of a starting list and be entitled to participate in any of the competitions.



5.5.2 JURY COMPOSITION

For all events (men and women) the Jury must be nominated with the following members:

- TD FIS (one for men and one for women nominated by FIS)
- Referee (FISU Technical Committee Chair nominated by FISU, for Para events Technical Advisor for Para Alpine Skiing, nominated by FISU)
- Assistant Referee (only for speed events) proposed by FISU and nominated by the TD FIS
- Chief of Race (nominated by Organising Committee)

The second nominated TD FIS could be proposed to act as Video Controller or Assistant Referee for SG.

All Jury members must be able to communicate with the local Organising Committee and with all Jury members by radio during the competitions (ICR 601.4.1.5) in English.

Connecting Coach: The Jury has the right to nominate a Connection Coach at the Teams Captains meeting who will work together with the jury and the other coaches but will not be Jury member.

5.5.3 PROTEST AND APPEAL

Any protest of a sport or disciplinary nature must reach the Jury according to the regulations laid down by the FIS. Such protest must be accompanied by a deposit in cash of CHF 100 or equivalent in the currency of the Organizing Committee (FIS ICR Art. 644; 644.4). This deposit will be returned if the protest is upheld.

Each Head of Delegation or his/her deputy is authorized to lodge an appeal against the decision of the Jury. This appeal must be submitted in writing to the Jury of Appeal or competent authority in accordance with the FIS regulations. Any decision of the Jury of Appeal or equivalent authority of a sport is final and must be reported immediately to the Head of Delegation of the country concerned.

Any sport disciplinary situation which cannot be satisfactorily resolved by the Sport Technical Committee (TC) and the sport-specific disciplinary regulations will be reported to the FISU Disciplinary Committee for further action to be taken. Where appropriate, a report will also be sent to FIS.

5.6 Competition Format

5.6.1 DRAWS SG, GS AND SL

- Draw according to the FIS ICR art. 621.3. The starting order of the competitors in all Alpine Skiing competitions is determined by their FIS points in the concerned discipline. A first (1st) group with a maximum of the 15 best competitors present regardless of nationality, will be drawn.



- The group may be increased if two (2) or more competitors share the 15th rank.
- All remaining competitors start in order of their FIS points. All competitors without FIS points will be drawn in the last group.

5.6.2 SUPER-G (SG)

- FIS Race Level 1 (minimum FIS points penalty: 15)
- The Super-G is carried out in one (1) run.

5.6.3 GIANT SLALOM (GS)

- FIS Race Level 1 (minimum FIS points penalty: 15)
- The GS event consists of two (2) runs.

5.6.4 SLALOM (SL)

- FIS Race Level 1 (minimum FIS points penalty: 15)
- The Slalom event consists of two (2) runs.

5.6.5 ALPINE COMBINED (AC)

- FIS Race Level 1 (min. FIS points penalty: 15)
- 2 rounds format
- FIS points attributed for Alpine Combined and Super-G race of the Alpine Combined.

5.6.6 MIXED TEAM PARALLEL (TP)

- The Mixed Team Parallel event will be conducted as a parallel using Giant Slalom gates and panels.
- The total team size per Nation is limited to a maximum of 4 athletes (2 women and 2 men). A competitor can only start a run once.

5.6.7 TEAM ENTRY

- The teams' entry confirmations for the Mixed Team Parallel (TP) (with names of participating athletes) must be submitted at the TCM scheduled in Bardonecchia on 15 January 2025.
- Maximum 16 Teams may participate in the final phase.



- If more than 16 teams enter the competition, then a qualification phase will be organized to assign the last places for the final. There will be a reset of the gates after the qualification phase.

5.6.8 TEAM RANKING

- The teams will be ranked in accordance with the FIS - PWSL points, from lowest total points to highest.

Seeding of the Teams (FIS ICR 1212.5)

The teams entered will be seeded into eight (8) heats based upon their ranking. A bracket list will be arranged as follows:

- Heat 1: Nation ranked 1 vs. Nation ranked 16
- Heat 2: Nation ranked 8 vs. Nation ranked 9
- Heat 3: Nation ranked 5 vs. Nation ranked 12
- Heat 4: Nation ranked 4 vs. Nation ranked 13
- Heat 5: Nation ranked 3 vs. Nation ranked 14
- Heat 6: Nation ranked 6 vs. Nation ranked 11
- Heat 7: Nation ranked 7 vs. Nation ranked 10
- Heat 8: Nation ranked 2 vs. Nation ranked 15
- The best nation, according to the team ranking, will receive bib number 1 and the last nation will receive the last bib number.
 - Women will receive bibs starting from one (1), and then Men, starting from five (5), in alphabetical order. If a heat is incomplete, the remaining nation will automatically qualify for the next round (a bye).
- For each individual leg of the heat, the competitor who is listed first, or respectively on top of the pairing, will start on the red course for his/her first run.

Following the order in the bracket, from top to bottom, all groups race in succession. For the second (2nd) individual leg of the heat, the competitors change courses. All subsequent runs are conducted using this system.

Running the Competition:

- Each individual leg between two opponents consists of one (1) run.
- The start order will be as follows (as an example for Heat 1):
- "Course Red" Nation 1 W1 vs. "Course Blue" Nation last W1
- "Course Red" Nation 1 M1 vs. "Course Blue" Nation last M1
- "Course Blue" Nation 1 W2 vs. "Course Red" Nation last W2
- "Course Blue" Nation 1 M2 vs. "Course Red" Nation last M2
- The blue course will be located on the skier's right.
- The starting order cannot be changed from one heat to the next.



Round of 16:

- The 16 teams start according to the start system in pairs from top to bottom. There are eight (8) that qualify for the quarterfinals. The losing eight teams receive the same rank (9th).

Quarter Finals:

The eight (8) qualified teams start according to the start table. The losing four (4) teams receive the same rank (5th).

Semi-Finals and Final:

The four (4) qualified teams start according to the start table. The losers of the semi-finals race in the 3rd and 4th positions and the winners for teams race in the 1st and 2nd positions.

Points Scoring:

- The winners of each individual leg score one (1) point for their Nation. In the event of a tie of an individual leg, both nations are awarded one (1) point.
- If there is a tie at the end of the heat (example 2:2) the Nation with the lowest combined time of the best individual woman and the best individual man run time (or second best in the event of a tie for the best time) will win the heat.
- If both competitors fall in any leg, the first competitor to reach the finish successfully will be announced as the winner. If both competitors fail to finish, the competitor who successfully skied the furthest distance will be the leg winner.

Reasons for Disqualifications (immediate and without protest):

- Changing from one course to another
- Interfering with the opponent, accidentally or not
- Not passing through a gate correctly (art. 661.4.2)
- Stepping back (art. 614.2.3)

5.7 Competition and Training Venue Information

5.7.1 GENERAL INFORMATION

CLUSTER VENUE MANAGER		Diego CHIAVEGATO (ITA)	
OC VENUE MANAGER		Enrico ROSSI (ITA)	
Venue	Function	Location	Distance from accommodation to venue



Bardonecchia - Melezet (ITA)	Training/ Competition	45.0586567 6.6668551	3Km
Bardonecchia – Campo Smith	Training/ Competition	45.0707464 6.6927465	0.6Km

5.7.2 VENUE LAYOUTS

See Appendix, Section 8.1.

5.7.3 SLOPES TECHNICAL DATA

See Appendix, Section 8.1.2.

5.8 Day-by-Day Schedule

Categories:

Training / Course Inspection
Competition
Reserve Day
Technical Meeting / Draw
Mascot Ceremony
Medal Ceremony
Social Event

Some changes may be applied.

	Sport	Time		Event	Location
9 Jan	ALP	10:00		Venue Inspection Visit	Bardonecchia
9 Jan	ALP P-ALP	17:00	18:00	1st Technical Committee Meeting	Palazzo delle Feste (BRD)
10 Jan	ALL	17:00	19:00	FISU International Technical Committee (ITC) Meeting	FISU Hotel Torino Majestic
12 Jan	ALP P-ALP	13:00	19:00	Equipment Control Optional Testing	Olympic Village (BRD)
12 Jan	ALP P-ALP	17:00	19:00	1st General Technical Meeting (1st TCM)	Palazzo delle Feste (BRD)



13 Jan	ALP	10:00	12:00	Official Free-Ski on SG course	Melezet 23
13 Jan	ALP	14:00	15:00	Team Captains Meeting Draw SG M/W	Palazzo delle Feste (BRD)
13 Jan	ALL	19:30		Opening Ceremony	Inalpi Arena (TO)
14 Jan	ALP	08:30	09:30	Course Inspection SG	Melezet 23
14 Jan	ALP	10:30	12:00	SG W	Melezet 23
14 Jan	ALP	12:00	12:15	Mascot Ceremony Super-G W	Finish Area Melezet 23
14 Jan	ALP	12:30	14:00	SG M	Melezet 23
14 Jan	ALP	14:00	14:15	Mascot Ceremony Super-G M	Finish Area Melezet 23
14 Jan	ALP	17:00	18:30	Team Captains Meeting Draw AC W	Palazzo delle Feste (BRD)
14 Jan	ALP	18:00	18:20	Medal Ceremony Super-G M & W	Medal Plaza Bardonecchia
15 Jan	ALP	08:15	09:00	Course Inspection AC/SG W	Melezet 23
15 Jan	ALP	09:30	11:00	AC/SG W	Melezet 23
15 Jan	ALP	12:30	13:00	Course Inspection AC/SL W	Melezet 23
15 Jan	ALP	13:30	15:00	AC/SL W	Melezet 23
15 Jan	ALP	15:00	15:15	Mascot Ceremony Alpine Combined W	Finish Area Melezet 23
15 Jan	ALP	18:00	18:10	Medal Ceremony Alpine Combined W	Medal Plaza Bardonecchia
15 Jan	ALP	17:00	18:30	Team Captains Meeting Draw AC M	Palazzo delle Feste (BRD)
16 Jan	P-ALP	08:05	08:50	Course Inspection SG - Vision Impaired	Melezet 23
16 Jan	ALP P-ALP	08:15	09:00	Course Inspection Para SG - ALL AC/SG - M	Melezet 23



16 Jan	ALP P-ALP	09:30	11:00	Para SG W/M AC/SG M	Melezet 23
16 Jan	P-ALP	11:00	11:25	Mascot Ceremony Para SG M/W	Finish Area Melezet 23
16 Jan	ALP	12:30	13:00	Course Inspection AC/SL M	Melezet 23
16 Jan	ALP	13:30	15:00	AC/SL M	Melezet 23
16 Jan	ALP	15:00	15:10	Mascot Ceremony Alpine Combined M	Finish Area Melezet 23
16 Jan	ALP	18:00	19:00	Medal Ceremony Alpine Combined M Para SG W/M	Medal Plaza Bardonecchia
17 Jan	ALP P-ALP			Reserve Day	Melezet 23
17 Jan	ALP P-ALP	17:00	18:30	Team Captains Meeting Draw GS W	Palazzo delle Feste (BRD)
18 Jan	P-ALP	08:15	08:45	Course Inspection GS - Vision Impaired	Melezet 23
18 Jan	ALP P-ALP	08:25	09:00	Course Inspection GS - All	Melezet 23
18 Jan	ALP P-ALP	09:30	11:30	Para GS W/M 1st Run GS W 1st Run	Melezet 23
18 Jan	P-ALP	12:00	12:30	Course Inspection GS - Vision Impaired	Melezet 23
18 Jan	ALP P-ALP	12:10	12:40	Course Inspection GS - All	Melezet 23
18 Jan	ALP P-ALP	13:00	15:00	Para GS W/M 2nd Run GS W 2nd Run	Melezet 23
18 Jan	ALP P-ALP	15:00	16:00	Mascot Ceremony Giant Slalom W Para GS W/M	Finish Area Melezet 23
18 Jan	ALP P-ALP	18:00	19:00	Medal Ceremony Giant Slalom W Para GS W/M	Medal Plaza Bardonecchia



19 Jan	P-ALP			Reserve Day	Melezet 23
19 Jan	ALP	17:00	18:00	Team Captains Meeting Draw GS M	Palazzo delle Feste (BRD)
19 Jan	ALP	08:15	09:00	Course Inspection GS M	Melezet 23
19 Jan	ALP	09:30	11:00	GS M 1st Run	Melezet 23
19 Jan	ALP	12:00	12:30	Course Inspection GS M	Melezet 23
19 Jan	ALP	13:00	15:00	GS M 2nd Run	Melezet 23
19 Jan	ALP	15:00	15:05	Mascot Ceremony Giant Slalom M	Finish Area Melezet 23
19 Jan	ALP	18:00	18:10	Medal Ceremony Giant Slalom M	Medal Plaza Bardonecchia
19 Jan	ALP	17:00	19:00	Team Captains Meeting Draw Mixed Team Parallel	Palazzo delle Feste (BRD)
20 Jan	ALP	09:00	10:30	Official Test Start Gates and Courses	Melezet 23
20 Jan	ALP	11:00	13:30	Mixed Team Parallel	Melezet 23
20 Jan	ALP	13:30	13:35	Mascot Ceremony Mixed Team Parallel	Finish Area Melezet 23
20 Jan	ALP	18:00	18:10	Medal Ceremony Mixed Team Parallel	Medal Plaza Bardonecchia
20 Jan	ALP	17:00	18:00	Team Captains Meeting Draw SL W	Palazzo delle Feste (BRD)
21 Jan	ALP	08:15	09:00	Course Inspection SL W	Campo Smith
21 Jan	ALP	09:30	11:00	SL W 1st Run	Campo Smith
21 Jan	ALP	12:00	12:30	Course Inspection SL W	Campo Smith
21 Jan	ALP	13:00	14:30	SL W 2nd Run	Campo Smith
21 Jan	ALP	14:30	14:40	Mascot Ceremony Slalom W	Finish Area Campo Smith
21 Jan	ALP	18:20	18:30	Medal Ceremony Slalom W	Medal Plaza Bardonecchia



21 Jan	ALP	17:00	18:00	Team Captains Meeting Draw SL M	Palazzo delle Feste (BRD)
22 Jan	ALP	08:15	09:00	Course Inspection SL M	Campo Smith
22 Jan	ALP	09:30	11:30	SL M 1st Run	Campo Smith
22 Jan	ALP	12:00	12:30	Course Inspection SL M	Campo Smith
22 Jan	ALP	13:00	15:00	SL M 2nd Run	Campo Smith
22 Jan	ALP	15:00	15:10	Mascot Ceremony Slalom M	Finish Area Campo Smith
22 Jan	ALP	18:20	18:30	Medal Ceremony Slalom M	Medal Plaza Bardonecchia
23 Jan	ALP			Reserve Day	Campo Smith
23 Jan	ALL		20:00	Closing Ceremony	Piazzetta Reale (TO)

5.8.1 CEREMONIES

Mascot Ceremony will be held in the finish area immediately following the conclusion of the competition. In SL, AC and GS, the Mascot Ceremony will be held after 30 runners have completed the second (2nd) run. Medal Ceremonies for Super-G, Alpine Combined, Giant Slalom, Mixed Team Parallel and Slalom will be held at the Medal Plaza in Bardonecchia: Piazza Alcide de Gasperi, 1, 10052 Bardonecchia TO.

For more information, please refer to section 5.10.

5.8.2 TRAINING

Official Free Skiing on Super-G courses takes place on 13th January 2025. More details can be found in the DbDs.

For unofficial Alpine training at Bardonecchia-Melezet-Selette prior to the first official training on 13th January 2025, the following applies:

- From 9th to 12th January 2025, the OC will provide one (1) training slope and the necessary gates and drill machines.
- Access to the mountain and use of this equipment will be free of charge to accredited Alpine delegation members.
- Participating coaches will be asked to coordinate setting the gates and arranging which delegations will train when, in collaboration with the Venue teams.
- More details about the training procedures will be inserted in next release of the THB



- During the Torino 2025 FISU Games period there will also be a training slope, gates, etc. available for official training sessions (e.g., for men's training during women's competitions).

5.8.3 RESERVE DAYS

The OC will do its best to hold all competitions on the scheduled days. However, under exceptional weather conditions the competitions may have to be postponed/rescheduled. Two (2) reserve days are kept free, 17th January and 23rd January 2025.

5.8.4 GENERAL TECHNICAL MEETING

- The 1st General Technical Meeting (Team Captain's Meeting) will be held from 17:00 to 19:00 on 12th January 2025 at Palazzo delle Feste (Bardonecchia).
- The Head of Delegation or his/her representative (coach) must attend the 1st General Technical Meeting.
- At the 1st General Technical Meeting, the Head of Delegation or his/her representative shall confirm and sign the official list of athletes.

Any further details and clarifications which are not yet described in the Technical Handbook will be communicated at the respective Team Captain's Meetings (refer to the day-by-day schedule).

5.9 Equipment

5.9.1 COMPETITION UNIFORMS & EQUIPMENT

Clothing and equipment control will in principle follow FIS rules. Equipment control will be carried out in respect of the recent FIS technical regulations if no additional FISU rule is determined. Each competitor is responsible for the equipment that he/she uses (skis, bindings, poles, ski boots, suit, etc.). The term "competition equipment" encompasses all items of equipment which the competitor uses in competition. This includes clothing as well as apparatus with technical functions including helmets for SG and GS. The entire competition equipment forms a functional unit. All equipment used by athletes is governed by the FIS Specifications for Alpine Competition Equipment, which can be found on the following link: https://assets.fis-ski.com/f/252177/3e02fbef6d/specifications_for_alpine_competition_equipment_07-11-2023.pdf

Note: Back Protector with airbag technology is recommended for speed events, but it is not compulsory for FISU.



5.9.2 EQUIPMENT CONTROL

Day	Time	Control and Location
12 Jan	15:00 – 16:30	Preliminary Equipment & Flour Control SG W (Olympic Village, Bardonecchia)
	16:30 – 18:00	Preliminary Equipment & Flour Control SG M (Olympic Village, Bardonecchia)
13 Jan	10:00 – 12:00	Preliminary Equipment & Flour Control (SG Start)
	14:00 – 15:00	Preliminary Equipment & Flour Control SG W+M (Olympic Village, Bardonecchia)
14-16 Jan	During the races	Melezet the finish area
17 Jan	14:30 – 16:00	Preliminary Equipment & Flour Control SG W (Olympic Village, Bardonecchia)
	16:00 – 18:00	Preliminary Equipment & Flour Control SG M (Olympic Village, Bardonecchia)
18-19 Jan	During the races	Melezet the finish area

Flour wax ban: FIS confirmed full implementation of the flour wax ban starts to 2023/24 season. Controls will be carried out by the FIS Equipment Controller.

5.9.3 STORAGE AND WAXING ROOMS

The Torino 2025 FISU World University Games will provide sport equipment storage and waxing rooms for the teams. All facilities are built and organised according to FISU and international requirements. Waxing rooms and cabins for Alpine will be provided at the athlete's village. Sections will be allocated to the respective nations and shared among their athletes.

The waxing rooms are equipped with special tables and equipment for preparing skis with lighting, several electric outlets, heating, ski racks and waste bins.

5.9.4 WAXING ROOM EQUIPMENT

For Alpine, Freeski & Freestyle and Snowboard, the OC will provide Waxing Tables in each waxing area.

Each waxing area (for all relevant sports) will have an ample supply of 220v power, plug-ins and extensions.



The OC will NOT be providing power converters/transformers, waxing irons, vises, etc. Missing eventual ski preparing equipment can be available in Bardonecchia sport shops or by contacting directly sport equipment factories.

5.9.5 FLUOR CONTROL

As stated in FISU Technical Regulation for the Torino 2025 FISU World University Games, the OC will follow the most recent FIS Technical Rules. Full implementation of the fluor wax ban is applied for the Torino 2025 FISU World University Games events. Testing procedure is in the process of development to ensure that all events will be regulated not using fluorine waxes which is mandatory for FIS competitions.

The procedure for testing will be handle by FIS. All athletes and team TO must know that fluor use is officially banned, therefore everyone must behave accordingly.

Testing procedures will be announced during TCM.

5.10 Doping Control

Doping Control will be carried out in accordance with the WADA World Anti-Doping Code and FISU regulations:

https://wugtorino2025.com/wp-content/uploads/2024/11/20240206_Torino-2025-FISU-Games-Regulations-Feb2024-1.pdf

5.10.1 LIST OF PROHIBITED SUBSTANCES

The actual list of prohibited substances and methods is defined in accordance with WADA international standards. National University Sports Federations will be responsible for ensuring that their delegations, namely athletes, are made aware of the actual version of the prohibited list. For the current WADA list of prohibited substances and methods, please refer to the following website: www.wada-ama.org.

5.10.2 TESTING

The required number of samples will be selected during the “in-competition” and “out-of-competition” periods in accordance with the Test Distribution Plan. “In-competition” is defined as the period commencing 12 hours before a competition in which the athlete is scheduled to participate through to the end of such competition, and the sample collection process related to such competition. “Out-of-competition” is defined as any doping control which is not “in-competition.” During the Torino 2025 FISU Games, athletes can be tested at any time without prior notice. Urine and/or blood samples will be collected in compliance with the WADA International Standard for Testing and Investigations (ISTI). A paperless system will be used for



the sample collection. The testing will be conducted by Doping Control Officers (DCO) from the Italian Anti-Doping Agency (NADO), an anti-doping organization accredited by WADA. Testing will be conducted under the supervision of the FISU International Medical Committee. The samples collected at competition venue doping control stations will be transported to the WADA approved laboratory in Italy. All results will be sent to the Chairman of the FISU International Medical Committee and entered into the ADAMS system. In the event of a violation of FISU Anti-Doping rules, the responsibility of processing the results lies with the FISU International Medical Committee.

In the event of setting a national record, doping testing of the athlete is carried out at the expense of his/her National University Sports Federation.

5.10.3 DOPING CONTROL STATIONS

Doping control stations are located at each sports venue or in close proximity. All doping control stations will be marked with signs, including signage directing athletes to the stations. After the completion of the doping control procedure, all samples collected at each doping control station will be delivered to the central doping control station together with the necessary support documentation (doping control protocols) for further registration in the ADAMS system. All samples will be packaged and sent to the WADA accredited anti-doping laboratory in accordance with international standards. All information concerning the doping control program during the Torino 2025 FISU World University Games is confidential according to WADA and FISU requirements. When visiting a doping control station, athletes are required to have accreditation cards.

- The doping control station for Alpine Skiing athletes will be located in a dedicated place in the Athlete's Village;

5.10.4 THERAPEUTIC USE EXEMPTIONS (TUE)

Torino 2025 FISU World University Games participants who require Therapeutic Use Exemptions (TUE) must make an appropriate request to their National Anti-Doping Organization or International Federation before participation in the Torino 2025 FISU Games. The World Anti-Doping Agency International Standard for TUEs will be applied in this case. Every athlete who uses a substance or a method included in the list of prohibited substances is obliged to be in possession of a completed TUE form of the established standard from the moment of arrival until the departure from the Village after the Closing Ceremony of the Torino 2025 FISU World University Games.

If there is a need for the use of a prohibited substance or a prohibited method for medical reasons after the opening of the Torino 2025 FISU Games, an athlete must submit a request for TUE to the FISU International Medical Committee as a matter of urgency (antidoping@fisu.net). The responsibility for completing the TUE form and submitting an application to the FISU International Medical Committee lies with the delegation physician.



If the delegation does not have its own physician, the athlete shall submit a request for TUE to the FISU International Medical Committee (antidoping@fisu.net), with the attachment of medical documentation confirming the need for providing him/her with emergency medical treatment.

5.10.5 STRUCTURE

Chair of FISU International Medical Committee	Dr. Dusan HAMAR (SVK)
OC Head of Medical Services	Dr. Gianluca GHISELLI (ITA)
OC Head of Doping Control	Dr. Francesco LEONELLI (ITA)

5.11 Mascot and Medal Ceremonies

5.11.1 MASCOT CEREMONY

The Mascot will be handed to the winners right after the confirmation of the final results. They will be asked to pose with the Mascots in hand for the Winners Picture in front of the V-board in the finish area.

The winners will be announced by the Sport Presentation Speaker and the Media will be invited to take the picture or the video of the winners.

5.11.2 MEDAL CEREMONY

- The Medal Ceremonies will be held at the Medal Plaza of Bardonecchia - Piazza Alcide de Gasperi, 1, 10052 Bardonecchia TO, according to the detailed day-by-day schedule (see Section 5.7).
- The official language for the Medal Ceremonies will be English.
- The medallists from each event must attend the Medal Ceremonies. In the event that a medallist is unable to attend, the medal is delivered to an official of the relevant delegation. He/she must be dressed in the delegation's official outfit. He/she must not mount the podium but stand behind it. The official awarding the medal will hand the medal and medal box over the podium. During the FISU Anthem, the delegation official stands behind the podium.
- In the event all medallists cannot be present, the Medal Ceremony will be postponed.
- If an athlete or team is disqualified, the medal(s) shall be returned to FISU.

During the Medal Ceremony:



- The athletes are not allowed to bring any national flag or any other national, cultural or religious symbol on the podium.
- The national flags of the first three (3) medallists will be raised and the only anthem played will be the FISU Anthem, the Gaudeamus Igitur.
- During the playing of the FISU Anthem and the raising of the flags, athletes shall face the flags and always conduct themselves in a dignified manner. No national anthem is played during the ceremony.
- Athletes are expected to take off their caps and sunglasses when receiving their medal and keep items in hand throughout the ceremony (i.e., playing of the FISU Anthem and raising of the flags).
- Athletes, authorities and accompanying persons are required to face the flags while they are being raised and the FISU Anthem is being played.
- The medallists are expected to attend the ceremony in the uniforms they wore at the Opening Ceremony but are also allowed to attend the official ceremony wearing sport uniforms when the ceremony takes place immediately following the competition.
- After the medals are awarded, athletes must remain in the awarding area for photos on the podium with medals.
- In order to get the best photos, athletes should follow the recommendations of photographers.

5.11.3 DIPLOMA OF HONOR

- The athletes ranked one (1) to eight (8) will receive a Diploma of Honor.
- For team events, each team member, from teams ranked one (1) to six (6), will receive a personal Diploma of Honor mentioning his/her name and the team ranking.
- Diplomas of Honor are not distributed at the Medal Ceremony. They will be sent in PDF format to the Head of Delegation or an appointed representative of each delegation at the end of the event.

5.12 Media Interviews

Venue Media Centers for media representatives are organized at all Torino 2025 FISU World University Games competition sites.

At the conclusion of a competition, all athletes must leave the Field of Play (FoP) through the mixed zone where brief interviews will be held. Every athlete/coach should be ready to communicate with media representatives upon their request. Team representatives should be prepared to provide their athletes with a warm jacket or a blanket prior to entering the mixed zone.

A Media Operation staff will coordinate the exchanges between athletes/coaches and media. Support for translation in English will be provided during the mixed zone interviews. If an athlete/coach does not speak this language, they should invite their team interpreter to the mixed zone.



Media conferences are held at the beginning and the end of the Torino 2025 FISU World University Games and upon necessity.

5.13 Sport Information Services

5.13.1 ONLINE SPORT INFORMATION SERVICES

Online information will be available on the Torino 2025 FISU World University Games' official website: <https://wugtorino2025.com/>

In addition, more detailed information and publications for teams can be accessed under the following link: <https://wugtorino2025.com/delegation-services/>

5.13.2 SPORT INFORMATION AT THE VENUE

A Sport Information Desk (SID) will be located at each venue, providing the most recent information related to the competitions and assisting the team representative(s) with sport-related questions.

- The Sport Information Desk will operate from 13 January 2025 until the last day of competition, in accordance with the competition and training schedules (one (1) hour before and after the events).

5.13.3 SPORT INFORMATION DISTRIBUTION

Information	Online	Venue	Delegation Accomodation
Competition Schedule	+	+	+
Start List/ Result List	+	+	+
Change to Schedule	+	+	+
Special Announcements	+	+	+
Weather Information	+	+	+
Medal Table	+		
Technical Handbook	+		
FISU Regulations	+		
Other Information		+	+
Answer to Team Questions		+	+



6. SERVICE INFORMATION

6.1 Accreditation

For the Accreditation procedure please refer to the HoD Manual.

IMPORTANT: A personalised accreditation card with a photo, name and function of the cardholder carries information about the access rights and privileges available to him/her. Upon arrival, the accreditation card, equipped with a QR-code, enables members of delegations a 24-hour temporary access to the Torino 2025 FISU World University Games venues in accordance with access rights on the accreditation card. The temporary access does not allow participation in the competition. After the CIC's approval, the accreditation card will be fully activated.

6.2 Radio Frequency Control

At all Torino 2025 FISU World University Games venues, any use of radio frequencies (e.g., walkie-talkies, radio stations, wireless cameras, Wi-Fi access points, wireless microphones, FM-transmitters, and any other wireless equipment) requires a temporary radio license from the Ministry of Economic Development (Ministero dello Sviluppo Economico, MISE) and must ensure it doesn't conflict with the Italian emergency services, including the police, EMTs (Emergency Medical Technicians), and other first responders.

If you are planning to utilize any of the items noted above which require bandwidth on the frequency spectrum, please fill out the Frequency Form (to be provided at a later stage) and send it to technology@wugtorino2025.com.

The Organising Committee will be registering a range of available Radio Frequencies starting from September 2024. We will then provide the frequencies available to each team/country to determine if their existing equipment will work within the range available in the Torino region.

Your wireless devices will be registered and checked by the frequency-organizer. You will receive a confirmation if the devices can be registered in Italy.

By the end of November, you will receive the frequencies allocated to you.

Important: Every frequency user is responsible for submitting registration details for all their wireless devices accordingly and in a timely manner.

Fees/costs (tbc) for temporary radio licenses must be paid to the Organising Committee by the delegation or frequency users applying for an Italian radio license.



6.3 Insurance and Responsibilities

Participating countries must adhere to the insurance requirements and conditions as stipulated in Section 5.6 of the Torino 2025 FISU World University Games Regulations.

Skiing and snowboarding off path:

Any participants skiing or snowboarding off the controlled slopes do so at their own risk. The Torino 2025 FISU World University Games Organizing Committee does not accept any liability.

6.4 Transportation

6.4.1 TRANSPORTATION SYSTEM FOR ATHLETES AND TEAM OFFICIALS (TA)

The transportation system for athletes and team officials will provide transport services from 9th – 23rd January 2025. Routes in the transportation system for athletes and official delegation members are marked with the abbreviation “TA” (Transport Athletes). Vehicles will be equipped with placards indicating route number for the individual and team sports and spectating athletes.

Route Number	TA - XXX
Sport	Alpine Skiing
Route	Accommodation - Venue
Distance to the Venue	XX km
Time	XX min

6.4.2 TRANSPORTATION SERVICE FOR ALL ACCREDITED STAKEHOLDERS – TRANSPORT CONNECT (TC)

Scheduled buses are provided between the Bardonecchia Train Station, Athlete’s Villages, other hotels (TBC) and the competition venues for all accredited stakeholders from 12th – 23rd January 2025. Buses will operate in accordance with the competition schedule. All athletes and officials, regardless of their delegation and sport, will have access to the bus transportation system TC.

Detailed information will be available in the Transportation Guide.

6.5 Food and Beverages

This information will be included in the next version of the Technical Handbook.

6.5.1 MEALTIMES

- Breakfast: 05:30-9:30
- Lunch: 11:00-15:00



- Snack: 16:00-17:00
- Dinner: 18:30-22:30
- Late Snack: 23:00-00:00

6.5.2 FNB SERVICES AT THE COMPETITION VENUES

An athletes' lounge with meals will be provided one (1) hour prior to the competition until one (1) hour after the competition. This service is provided from the start of the first official training.

6.6 Medical Services

6.6.1 CONDITIONS OF MEDICAL ASSISTANCE

During the Torino 2025 FISU World University Games, in the event of life-threatening diseases and conditions or in any situations requiring urgent medical treatment, emergency medical assistance is provided to all client groups from 8-25 January 2025. Individuals that intend to arrive earlier or leave later must arrange for their own adequate travel insurance to cover medical costs. Immediate (except for emergency) and planned medical care is provided based on:

Immediate (except for emergency) and planned medical care is provided based on:

- an obligatory medical insurance agreement
- a paid medical service agreement
- a voluntary health insurance agreement
- health insurance

6.6.2 MEDICAL SUPPORT STRUCTURE

- Mobile medical crews in the Field of Play of the competition venues
- Ambulance crews at the competition venues
- Dedicated hospitals and specialized medical facilities
- Medical stations at not competition venues as hotel and villages.

***Please refer to the Medical Services Guide for more details.**

6.6.3 MEDICAL SUPPORT IN THE ACCOMMODATION SITES

Details can be found in the Medical Services Guide. Information to be defined at a later stage.

6.6.4 DEDICATED HOSPITALS AND SPECIALIZED MEDICAL FACILITIES

Additional information and locations of all hospitals in the region will be available in the Medical Service Guide.



6.7 Weather

For weather information visit the following link:

https://www.arpa.piemonte.it/rischi_naturali/snippets_arpa/meteo/

Otherwise, weather information can be picked up at Sport Information Centre at each of the village as well as online and at other locations, including on the Games website.

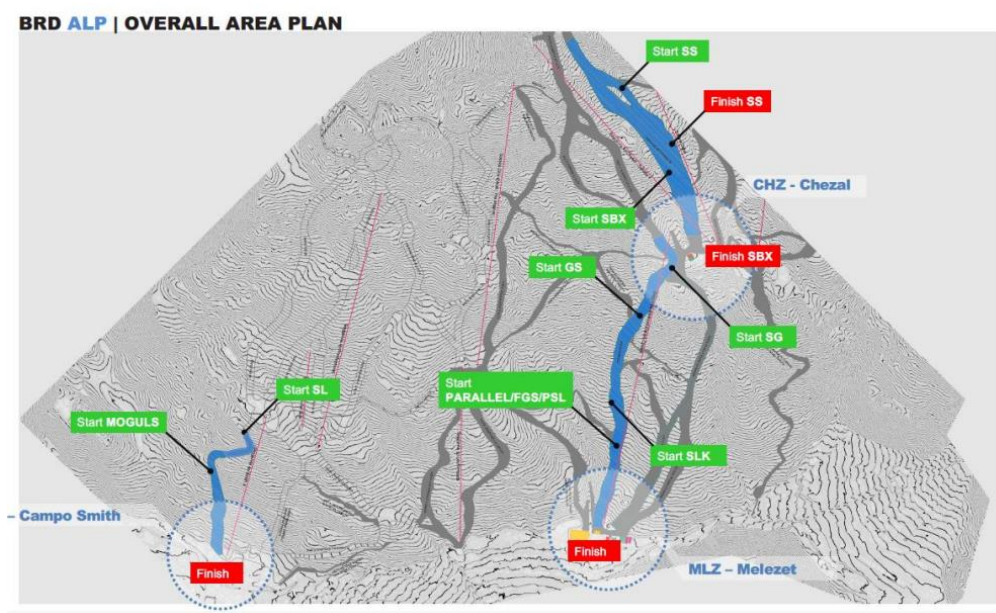
7. OC CONTACTS

Title	Email
Accreditation	accreditationtorino2025@wugtorino2025.com
Sport Department	sport@wugtorino2025.com
Sport Entries	sportentries@wugtorino2025.com
Delegation Services	delegationservices@wugtorino2025.com
ITO Service Desk	itoservices@wugtorino2025.com

8. APPENDICES

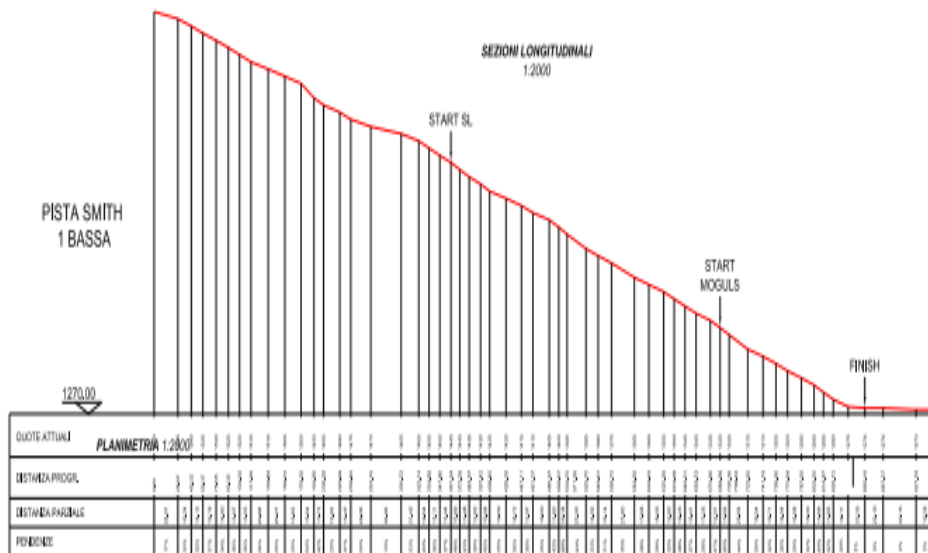
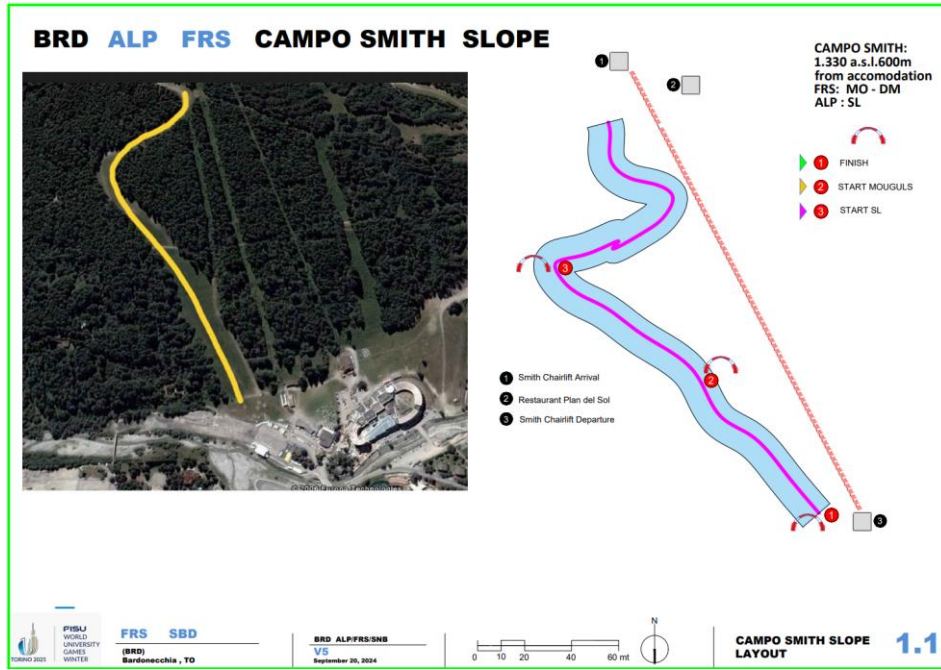
8.1 Venue Layouts

8.1.1 VENUE PLANS

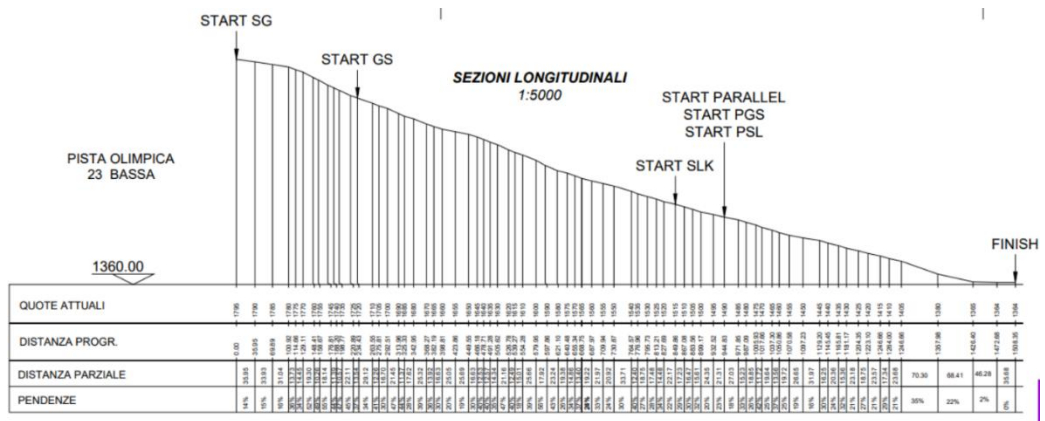
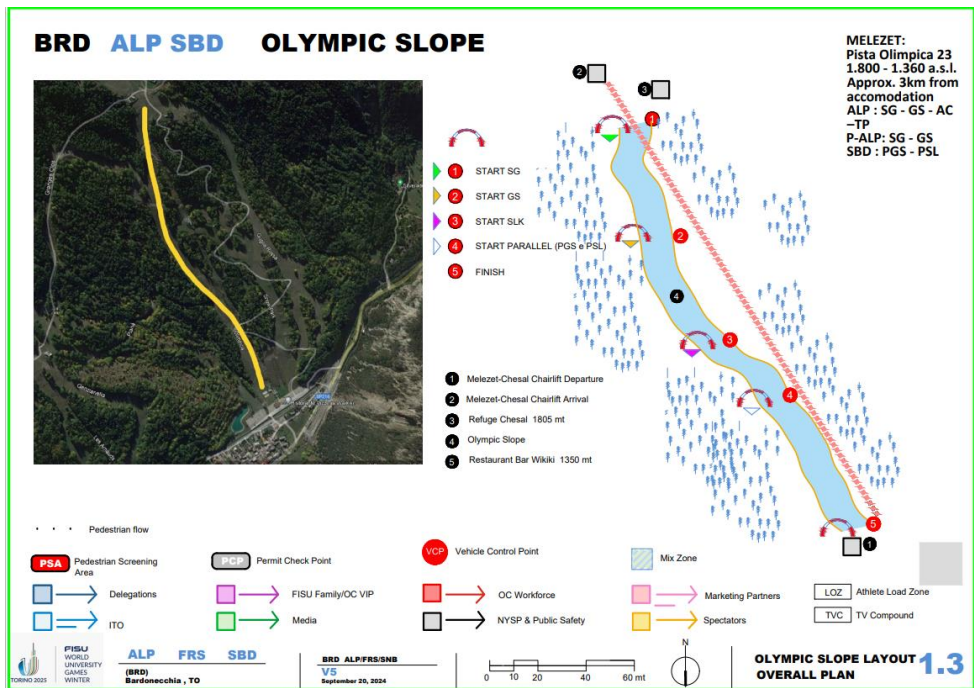


8.1.2 OVERVIEW SLOPES

SL - Campo Smith



SG/GS/AC/TP - Melezet

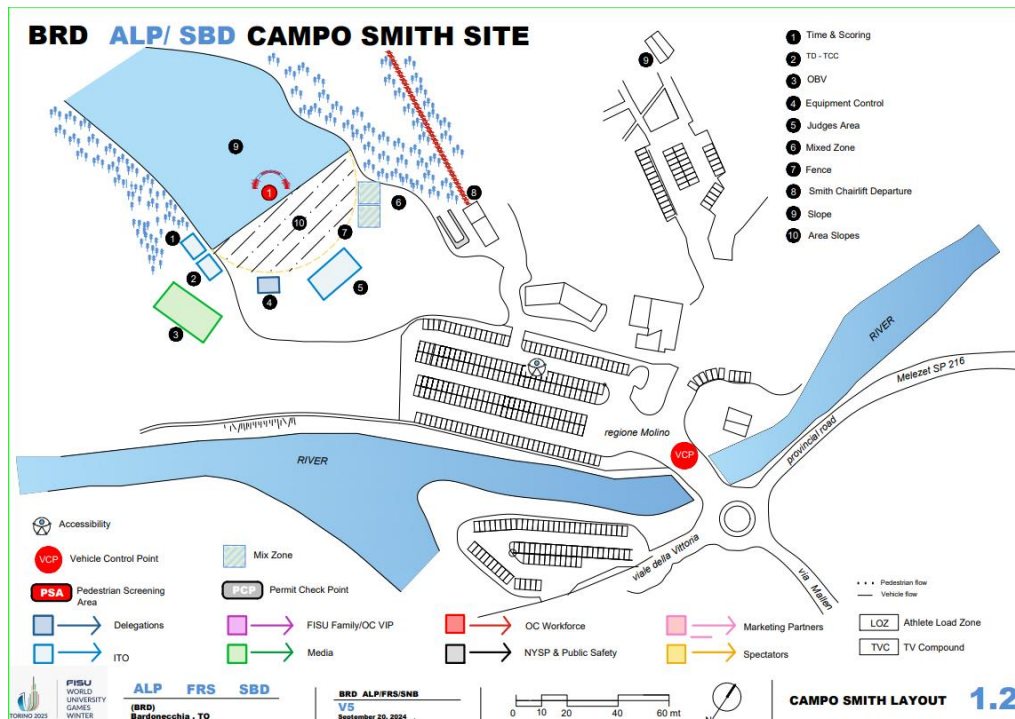


DISCIPLINE	SLOPE	START	FINISH	ALTITUDE DIFFERENCE	LENGTH
SG	23 OLIMPICA	1795	1364	431	1508
GS	23 OLIMPICA	1720	1364	356	1274

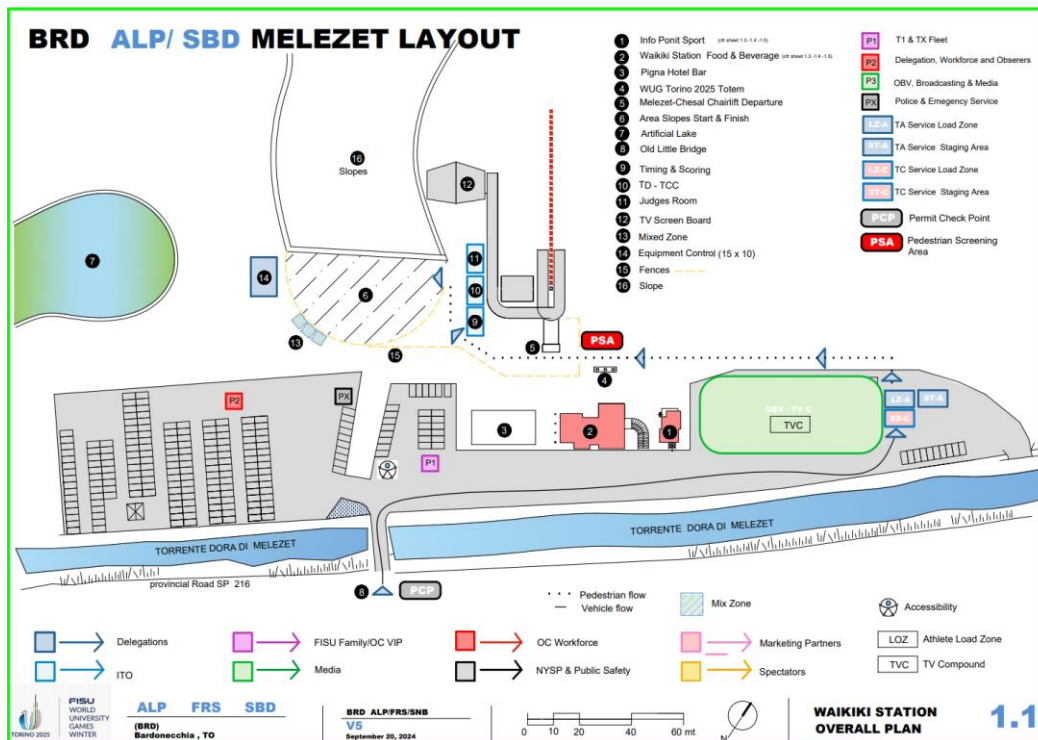
8.1.3 VENUE LAYOUTS

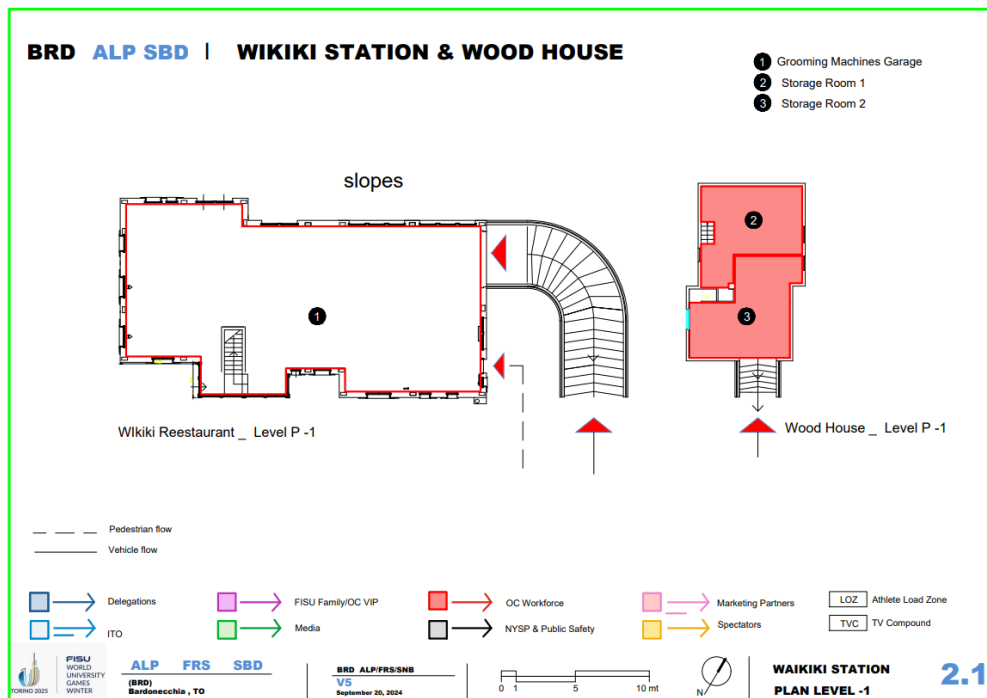
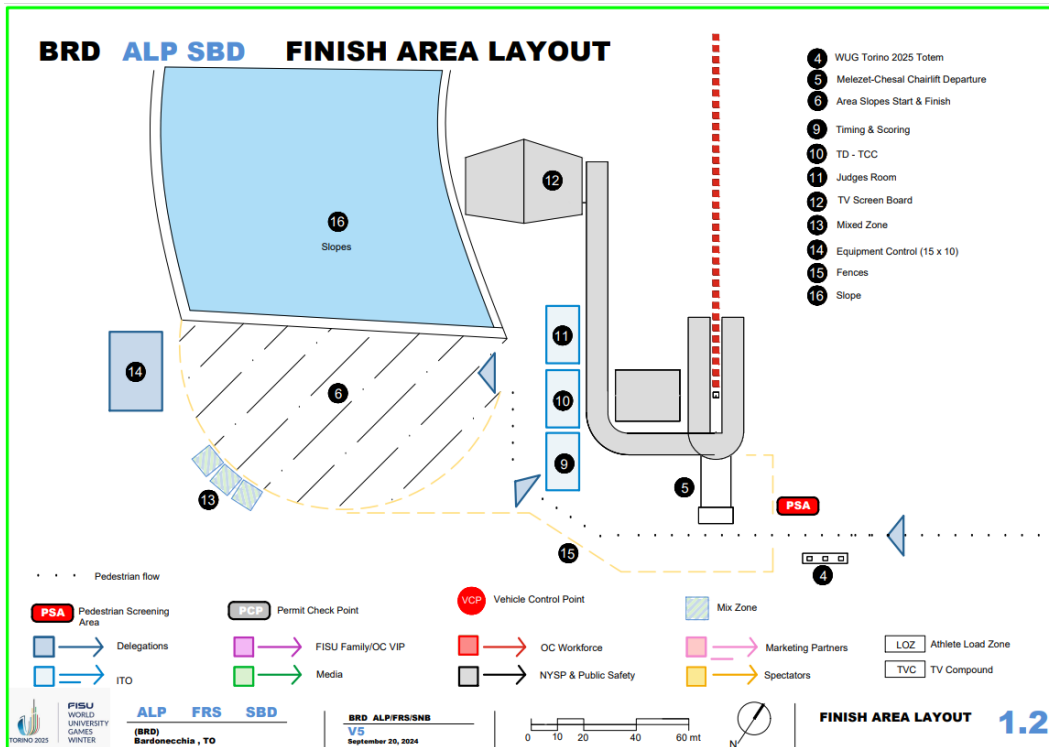
SL – Campo Smith





SG/GS/AC/TP - Melezet

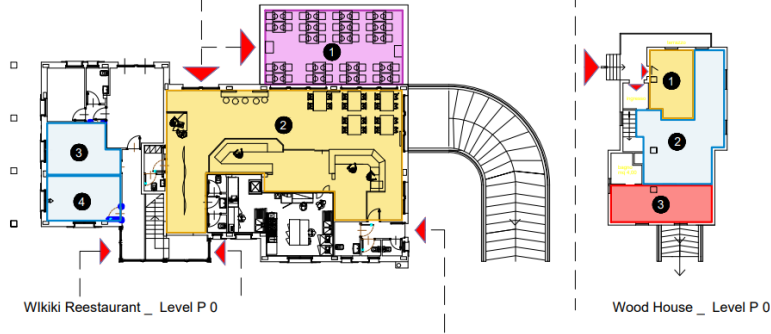




BRD ALP SBD | WIKIKI STATION & WOOD HOUSE

- 1 Fisur Family & Vip Lounge
- 2 Spectators Refreshment Area
- 3 ALP_TCC - IF TDs
- 4 SBD_TCC - IF TDs

- 1 Info Point Sport
- 2 Competition Office
- 3 Storage Room 3

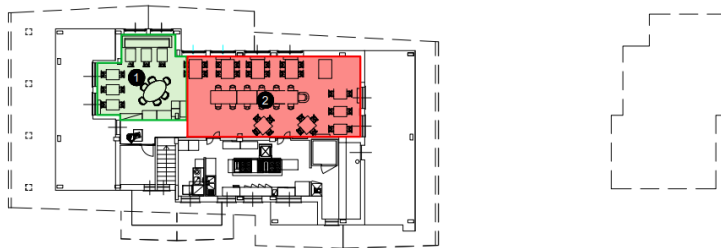


--- Pedestrian flow
 --- Vehicle flow
 Delegations (blue square) ITO (light blue square)
 FISU Family/OC VIP (purple square) Media (green square)
 OC Workforce (red square) NYSP & Public Safety (grey square)
 Marketing Partners (pink square) Spectators (yellow square)
 Athlete Load Zone (LOZ, white box) TV Compound (TVC, white box)

FISU WORLD UNIVERSITY GAMES WINTER TORINO 2025
 ALP FRS SBD (BRD) Bardonecchia, TO
 BRD ALP/FRS/SBD V5 September 20, 2024
 0 1 5 10 mt
 N
WAIKIKI STATION 2.2
PLAN LEVEL 0

BRD ALP SBD | WIKIKI STATION & WOOD HOUSE

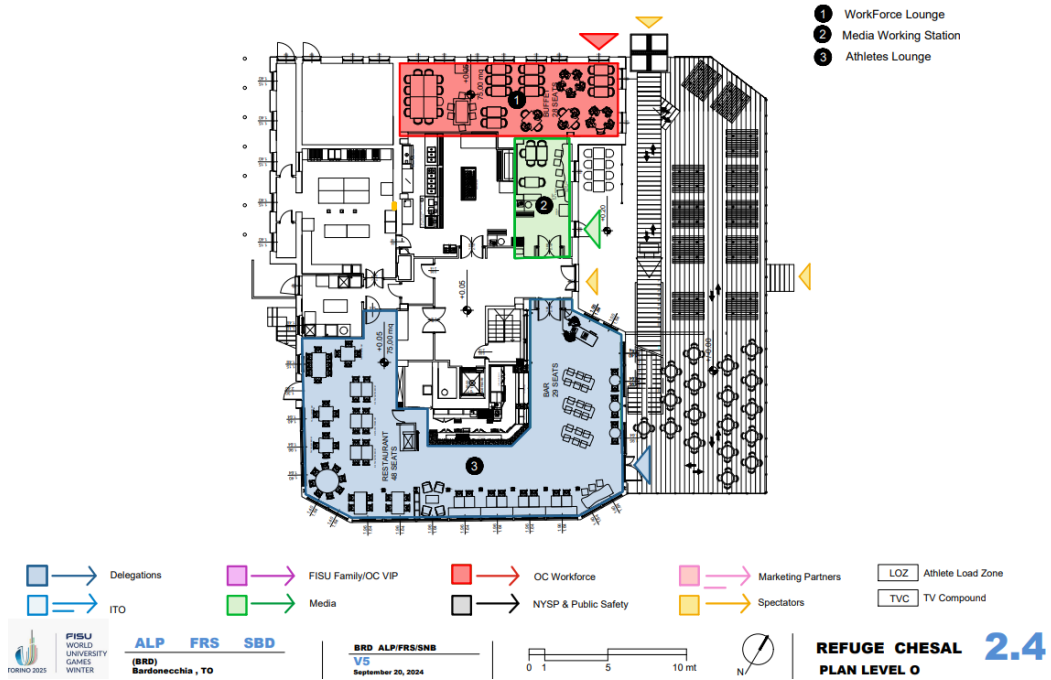
- 1 Media Work Station
- 2 Workforce Lounge



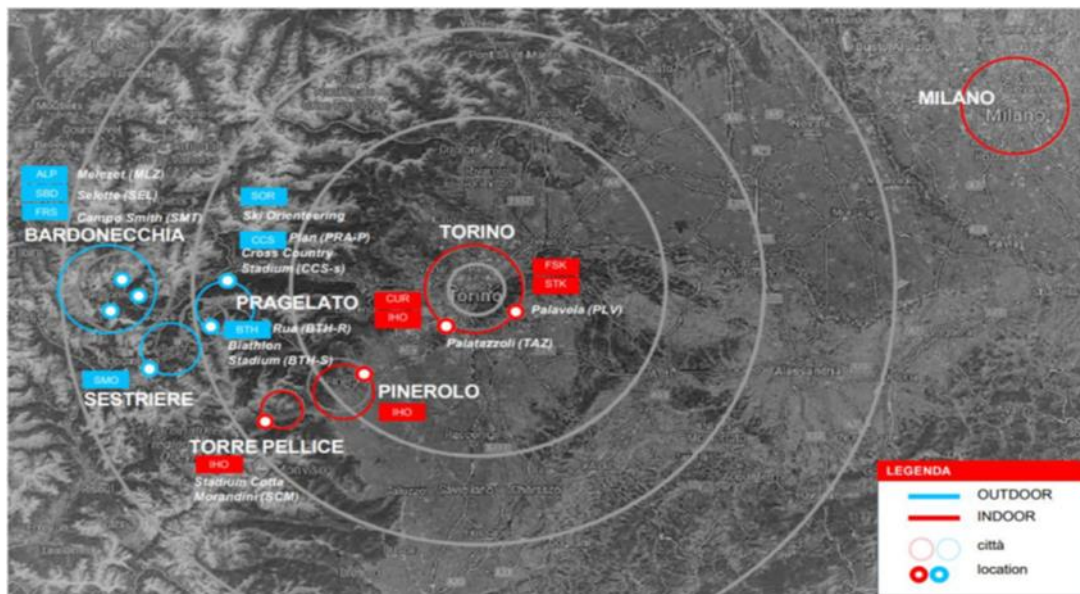
Delegations (blue square) ITO (light blue square)
 FISU Family/OC VIP (purple square) Media (green square)
 OC Workforce (red square) NYSP & Public Safety (grey square)
 Marketing Partners (pink square) Spectators (yellow square)
 Athlete Load Zone (LOZ, white box) TV Compound (TVC, white box)

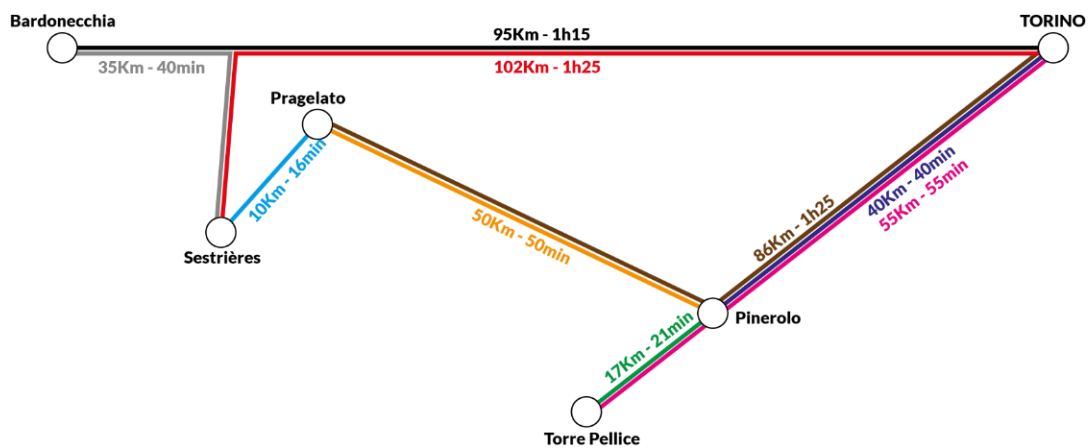
FISU WORLD UNIVERSITY GAMES WINTER TORINO 2025
 ALP FRS SBD (BRD) Bardonecchia, TO
 BRD ALP/FRS/SBD V5 September 20, 2024
 0 1 5 10 mt
 N
WAIKIKI STATION 2.3
PLAN LEVEL 0

BRD ALP | STATION REFUGE CHESAL



8.2 Geographical Overview Venues





INSTITUTIONAL PARTNER

Evento organizzato con il supporto di



Ministro per lo Sport e i Giovani



Con il patrocinio di



MAIN SPONSOR



FISU PARTNER



MEDIA PARTNER



OFFICIAL SUPPLIER

