



FISU
WORLD
UNIVERSITY
GAMES
WINTER



TECHNICAL HANDBOOK

Biathlon

Version 05/12/2024



TORINO, ITALY
13 - 23 JANUARY 2025



TABLE OF CONTENTS

1. Welcome Messages	1
2. Abbreviations.....	3
3. FISU International Technical Committee.....	5
4. General Information	6
4.1 Torino 2025 FISU World University Games.....	6
4.2 Competition Schedule.....	6
4.3 Opening and Closing Ceremonies.....	6
5. Competition Information.....	6
5.1 Technical Committee	6
5.2 International Technical Officials	7
5.3 Competition Structural Chart.....	7
5.4 Technical Regulations	8
5.4.1 Entries.....	8
5.4.2 Jury Composition	9
5.4.3 Protest and Appeal	9
5.5 Competition Format.....	9
5.5.1 Short Individual: 15 Km M / 12.5 Km W	9
5.5.2 Single Mixed Relay: 6 Km W + 7.5 Km M	10
5.5.3 Sprint: 10 Km M / 7.5 Km W	10
5.5.4 Pursuit Start: 12.5 Km M / 10 Km W	10
5.5.5 Mass Start: 15 Km M / 12.5 Km W	10
5.6 Competition and Training Venue Information.....	10
5.6.1 General Information	10
5.6.2 Venue Layouts.....	11
5.6.3 Overview Courses and Technical Data	11
5.7 Day-by-Day Schedule.....	11
5.7.1 Ceremonies.....	14
5.7.2 Training.....	14
5.7.3 Reserve Day	14
5.7.4 General Technical Meeting.....	14
5.8 Equipment	14
5.8.1 Competition Equipment.....	14
5.8.2 Rifles and Ammunition	15



5.8.3 Storage and Waxing Rooms.....	15
5.8.4 Waxing Room Equipment.....	15
5.8.5 Fluor Control.....	15
5.9 Doping Control.....	16
5.9.1 List of Prohibited Substances	16
5.9.2 Testing	16
5.9.3 Doping Control Stations	17
5.9.4 Therapeutic Use Exemptions (TUE)	17
5.9.5 Structure	17
5.10 Mascot and Medal Ceremonies.....	18
5.10.1 Mascot Ceremony	18
5.10.2 Medal Ceremony	18
5.10.3 Diploma of Honor.....	19
5.11 Media Interviews.....	19
5.12 Sport Information Services.....	19
5.12.1 Online Sport Information Services.....	19
5.12.2 Sport Information at the Venue.....	19
5.12.3 Sport Information Distribution.....	20
6. Service Information	20
6.1 Accreditation.....	20
6.2 Radio Frequency Control	20
6.3 Insurance and Responsibilities	21
6.4 Transportation	21
6.4.1 Transportation System for Athletes and Team Officials (TA).....	21
6.4.2 Transportation Service for All Accredited Stakeholders – Transport Connect (TC)..	22
6.5 Food and Beverages.....	22
6.5.1 Mealtimes.....	Error! Bookmark not defined.
6.5.2 FNB Services at the Competition Venues	22
6.6 Medical Services.....	22
6.6.1 Conditions of Medical Assistance.....	22
6.6.2 Medical Support Structure	22
6.6.3 Medical Support in the Accommodation Sites.....	23
6.6.4 Dedicated Hospitals and Specialized Medical Facilities.....	23
6.7 Weather	23



7. OC Contacts	23
8. Appendices.....	24
8.1 Venue Layouts.....	28
8.1.1 Venue Plans.....	28
8.1.2 Overview Courses and Technical Data	28
8.1.3 Venue Layouts	29
8.2 Geographical Overview Venues	29



1. Welcome Messages

Dear delegates,

Dear friends and colleagues,

The 2025 FISU World University Games Winter in Torino, Piemonte (Italy) is drawing inexorably closer. "Torino" is a name that has a unique and incomparable significance for FISU. Not only was FISU founded in this beautiful city in 1949, but Torino also hosted the first ever Summer Universiade ten years later in 1959. Moreover, Primo Nebiolo, FISU President from 1961 to 1999, also contributed to strongly linking Torino and FISU together.

Having held the Winter Olympics in 2006, Torino also hosted the Winter Universiade in 2007. Now, we are all preparing to return to the birthplace of both FISU and the Universiade, but also to the mountains in Sestriere, host of the 1966 Winter Universiade and an important cluster for the upcoming Torino 2025 FISU World University Games Winter.

I am very grateful to the Organising Committee of the Torino 2025 FISU Games Winter, but also to the political, academic and sport authorities who are making this student sporting highlight - set from 13 to 23 January 2025 - possible. It is thanks to their unwavering commitment and belief in the values of university sport that these FISU Games will take place.

I wish you all a smooth and successful preparation for your mission at the Torino 2025 FISU World University Games Winter and look forward to welcoming you to the opening ceremony in Torino on 13 January 2025.



Leonz EDER

President of the International University Sports Federation



*Dear Delegates,
Dear Student-Athletes, Coaches, Dignitaries, and Presidents of Member Federations,
Dear all,*

It is a great pleasure for me to present the Technical Handbook for the Torino 2025 FISU World University Games Winter.

This handbook contains all the necessary information about the Games and the technical aspects for each sport, serving as a comprehensive guide for all participants and delegations involved.

The Torino 2025 FISU World University Games Winter will feature a total of 11 sports, divided into snow and ice disciplines.

However, what fills me with particular pride is that, for the first time in the history of the FISU World University Games Winter, we will be hosting two parasports competitions: Para Alpine Skiing and Para Cross-Country Skiing.

This event promises the perfect setting for high-level competition across six stunning areas of Piedmont, an Italian region with a rich history in both sports and science: Turin, Sestriere, Bardonecchia, Pragelato, Pinerolo, and Torre Pellice.

I am looking forward to welcoming the big family of the Winter University Sports in Piedmont in just a few months' time!



*Alessandro Sciretti
President of Torino 2025 FISU World University Games*



2. Abbreviations

Abbreviation	Name in Full
ADAMS	Anti-Doping Administration and Management System
ATH	Athletes
BTH	Biathlon
C	Coaches
CIC	FISU International Control Committee
CM	Competition Manager
CMI	FISU International Medical Committee
CT	FISU Technical Committee
DbD	Day-by-Day Schedule
DNF	Did Not Finish
DNQ	Did Not Qualify
DNS	Did Not Start
DSQ	Disqualified
EC	FISU Executive Committee
F	Final
FISU	International University Sports Federation
FNB	Food & Beverage
FoP	Field of Play
GTM	General Technical Meeting
HoD	Head of Delegation
IBU	International Biathlon Union
IF	International Federation
IR	International Referee
ITC	FISU International Technical Committee
ITO	International Technical Official
J	Judges



MAC	Main Accreditation Centre
MED	Medical Services
MR	Minimum Requirements
MS	Mass Start
MXZ	Mixed Zone
NADO	National Anti-Doping Organization
NF	National Federation
NTO	National Technical Official
NUSF	National University Sports Federation
OC	Organizing Committee
PRA	Pragelato
PRA-C	Pragelato Cluster
PRA-R	Pragelato Ruà
PUR	Pursuit
SF	Semi-Final
SID	Sport Information Desk
SIN	Short Individual
SMR	Single Mixed Relay
SPR	Sprint
T&S	Timing and Scoring
TCC	FISU Technical Committee Chair
TCM	Team Captain's Meeting
TD	Technical Delegate
TL	Team Leader
TO	Technical Official
TUE	Therapeutic Use Exemptions
VM	Venue Manager
WADA	World Anti-Doping Agency



3. FISU International Technical Committee

Position	First Name	Last Name	Country
FISU TCC ALP / PARA-ALP	Matjaz	KRANJC	SLO
FISU TCC BTH	Ondrej	RYBAR	CZE
FISU TCC CCS / PARA-CCS	Zofia Stefania	KIELPINSKA	POL
FISU TCC SMO	Markku	VAUHKONEN	FIN
FISU TCC SOR	Zuzana	RYCHLIKOVÀ	SVK
FISU TCC FRS	Magnus	FERRY	SWE
FISU TCC SBD	Ola	SUNDEKVIST	SWE
FISU TCC CUR	Scott	ARNOLD	CAN
FISU TCC IHO	Reto	BERTOLOTTI	SUI
FISU TCC IHO	Igor	NEMECEK	SVK
FISU TCC FSK	Dingding	LIU	CHN
FISU TCC STK	So Hee	KIM	KOR



4. General Information

4.1 Torino 2025 FISU World University Games

Date: 13 - 23 January 2025

Location: Turin, Italy

Sports Program: 11 Sports, 90 Medal Events

Venues: 11 Venues

4.2 Competition Schedule

https://wugtorino2025.com/wp-content/uploads/2024/11/competition_schedule.pdf

4.3 Opening and Closing Ceremonies

Opening Ceremony

Date: 13 January 2025

Location: Inalpi Arena, Corso Sebastopoli, 123, 10134 Torino TO

Beginning of Ceremony: 19:30

Closing Ceremony

Date: 23 January 2025

Location: Piazzetta Reale (Torino)

Beginning of Ceremony: 20:00

5. Competition Information

5.1 Technical Committee

FISU Technical Committee Chair	Ondrej RYBAR (CZE)
IBU Technical Delegate	Kimmo TURUNEN (FIN)
Chief Competition-Manager	Nora DA SAN MARTINO (ITA)
Chief Course	Mattia PEIROT (ITA)
Chief of Shooting Range	Rachele FANESI (ITA)

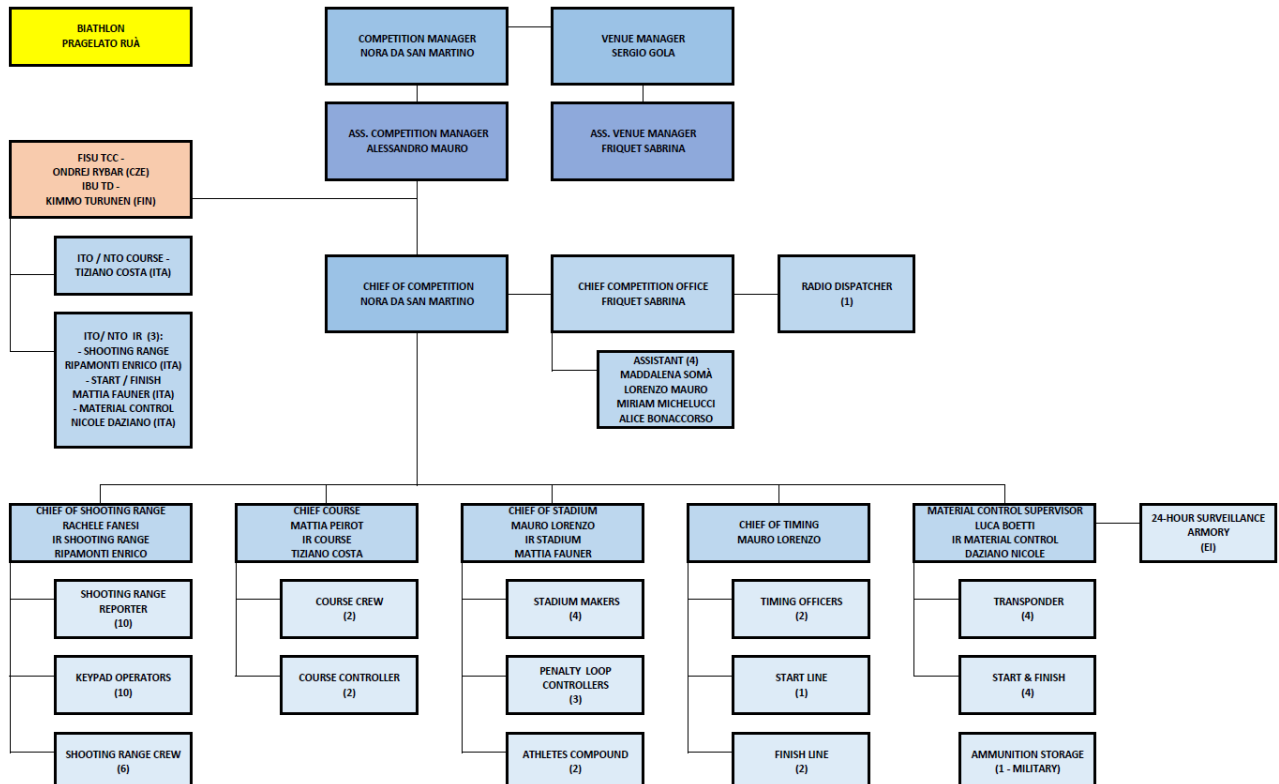


Chief of Stadium/Timing	Mauro LORENZO (ITA)
Material Control Supervisor	Luca BOETTI (ITA)

5.2 International Technical Officials

International Referee Course	Mattia GOLA (ITA)
International Referee Shooting Range	Enrico RIPAMONTI (ITA)
International Referee Start/Finish	Mattia FAUNER (ITA)
International Referee Material Control	Nicole DAZIANO (ITA)

5.3 Competition Structural Chart



5.4 Technical Regulations

The Biathlon events will be organized in accordance with the most recent technical regulations of the International Biathlon Union (IBU), except when specifically amended by these regulations or by the FISU Games International Technical Committee (FISU Games ITC).

The program and duration of the competitions will be fixed by the FISU Executive Committee in agreement with the Organizing Committee and the FISU Games ITC. In principle, the program will last nine (9) days and will include the following events:

Men

- Short Individual 15 km
- Sprint 10 km
- Pursuit 12.5 km
- Mass Start 15 km

Women

- Short Individual 12.5 km
- Sprint 7.5 km
- Pursuit 10 km
- Mass Start 12.5 km

Mixed

- Single Mixed Relay 6 km W + 7.5 km M

5.4.1 ENTRIES

Each country is authorized to enter a maximum of eight (8) athletes per gender (total 16 athletes). In each event, each country may enter:

- Individual events:
 - Short Individual and Sprint: maximum six (6) athletes (per gender).
 - Pursuit: the top 60 athletes (per gender) of the Sprint are automatically qualified. No replacement or moving up is possible in the event of athletes not starting.
 - Mass Start: all medalists and the additional athletes with the highest points, calculated by IBU World Cup points in three (3) previous individual competitions, will qualify up to a field of 30 (per gender). Replacement will be possible until, at the latest, one (1) hour before zeroing starts.
- Team events:
 - Single Mixed Relay: maximum one (1) team per country composed of one (1) W and one (1) M.

Only athletes with an IBU-ID are allowed to participate in each Biathlon event. Entries are controlled by the Organizing Committee and the IBU Technical Delegate.

At the first General Technical Meeting, the Head of Delegation or his/her representative shall confirm and sign the official list of athletes.



The Head of Delegation or his/her representative shall hand in the entry list for Individual and Sprint races the previous day after the official training, which are listed in the day-by-day schedule.

Only with an accreditation card approved by the FISU International Control Committee (CIC) can an athlete be considered for the draw of a starting list and be entitled to participate in any of the competitions.

5.4.2 JURY COMPOSITION

The competition Jury will consist of the following members:

- The IBU TD (Chair of the Jury)
- The Course Referee or one (1) referee assigned by the IBU
- The Competition Chief
- Two (2) team officials elected by the team captains from two (2) different participating countries

The FISU Technical Committee Chair may be present at all meetings but will not have the right to vote.

5.4.3 PROTEST AND APPEAL

Protests must be submitted in writing to the competition secretary or the TD/RD, using the official IBU Protest Form, for the attention of the competition jury, and must be accompanied by a fee of €100, or equivalent in the currency of the Organizing Committee.

The IBU protest form can be obtained from the Competition Secretary or downloaded from the IBU website: <http://www.biathlonworld.com/inside-ibu/sports-and-event/ibu-protest-form>

Protest must be within 15 min after the posting of the provisional results.

Each Head of Delegation or his/her deputy is authorized to lodge an appeal against the decision of the Jury. This appeal must be submitted in writing to the Jury of Appeal.

Any sport disciplinary situation which cannot be satisfactorily resolved by the Sport Technical Committee (TC) and the sport specific disciplinary regulations will be reported to the FISU Disciplinary Committee for further action to be taken. Where appropriate, a report will also be sent to the IBU.

5.5 Competition Format

5.5.1 SHORT INDIVIDUAL: 15 KM M / 12.5 KM W

- The Competitors will start at 30-second intervals with four (4) shooting bouts (prone/standing/prone/standing), five (5) laps of 3 km for men and 2.5 km for women. For each missed target will be added 45 seconds.



5.5.2 SINGLE MIXED RELAY: 6 KM W + 7.5 KM M

Each team competing in the single mixed relay is composed of one woman and one man. Each athlete on the team completes 4 bouts of shooting (prone/standing (F) – prone/standing (M) - prone/standing (F) – prone/standing (M)) and the associated ski loops (1.5 Km for both). After the final bout of shooting by the male athlete, he skis the 1.5 km course and goes to the finish. In every shooting bout the competitor must use the three spare rounds until all five targets are hit or until all eight rounds are fired. The spare rounds must be hand-loaded one by one. For each missed target, athletes run penalty loop of 75m.

5.5.3 SPRINT: 10 KM M / 7.5 KM W

The Competitors will start at 30-second intervals with two (2) shooting bouts (prone/standing), three (3) laps of 3.3 km for men and 2.5 km for women. For each missed target, athletes run penalty loop of 150 m.

5.5.4 PURSUIT START: 12.5 KM M / 10 KM W

The race of 4 shooting bouts (prone / prone / standing / standing), 5 laps of 2.5 km for men and 2 km for women. Start position depends on the place and time of the previous race. For each missed target athletes run penalty loop of 150 m.

Entries in the Pursuit competition is not required, as all competitors who qualify for the Pursuit in the qualifying competition are assumed to be entered. Names of the qualified athletes who will not be starting in the Pursuit competition must be reported to the competition office as soon as possible and at the latest by the start of the zeroing.

5.5.5 MASS START: 15 KM M / 12.5 KM W

The race from the general start with 4 shooting bouts (prone / prone / standing / standing), 5 laps of 3 km for men and 2.5 km for women. For each missed target athletes run penalty loop of 150 m. For this start 30 best athletes are allowed. All medalists and the additional athletes with the highest points, calculated by IBU WC points in three previous competitions, will qualify up to a field of 30.

Names of athletes qualified for the Mass Start competition must be confirmed by a signed, written form presented to the competition office as soon as possible and at least two (2) hours before the start.

5.6 Competition and Training Venue Information

5.6.1 GENERAL INFORMATION

CLUSTER VENUE MANAGER	Sergio GOLA
OC VENUE MANAGER	Sergio GOLA



Venue	Function	Location	Distance from accommodation to venue
Pragelato-Ruà	Training/ Competition	Via Rohrbach, 9, 10060 Plan, TO	TBD

5.6.2 VENUE LAYOUTS

See Appendix, Section 8.2

5.6.3 OVERVIEW COURSES AND TECHNICAL DATA

See Appendix, Section 8.2

5.7 Day-by-Day Schedule

Categories:

Training / Zeroing
Competition
Reserve Day
Technical Meeting / Draw
Mascot Ceremony
Medal Ceremony
Social Event

Some changes may be applied.

	Sport	Time		Event Name	Location
9 Jan	BTH	10:00		Venue Inspection Visit	Pragelato Ruà
10 Jan	BTH	17:00	19:00	FISU International Technical Committee (ITC) Meeting	FISU Hotel Torino Majestic
11 Jan	BTH	12:00	14:00	Open Training	Pragelato Ruà
12 Jan	BTH	09:00	11:00	Unofficial Training M	Pragelato Ruà
12 Jan	BTH	12:00	14:00	Unofficial Training W	Pragelato Ruà
13 Jan	BTH	09:00	11:00	Official Training 15 km Short Individual M	Pragelato Ruà
13 Jan	BTH	12:00	14:00	Official Training 12.5 km Short Individual W	Pragelato Ruà
13 Jan	BTH	14:10	15:00	Team Captains Meeting	Pragelato Ruà
13 Jan	BTH	15:00		Entry Deadline Short Individual M/W	Pragelato Ruà



13 Jan	ALL	19:30		Opening Ceremony	Inalpi Arena (TO)
14 Jan	BTH	09:00	09:50	Zeroing 15 km Short Individual M	Pragelato Ruà
14 Jan	BTH	10:00	11:15	15 km Short Individual M	Pragelato Ruà
14 Jan	BTH	12:00	12:05	Mascot Ceremony 15 km Short Individual M	Finish Area Pragelato Ruà
14 Jan	BTH	12:00	12:50	Zeroing 12.5 km Short Individual W	Pragelato Ruà
14 Jan	BTH	13:00	14:15	12.5 km Short Individual W	Pragelato Ruà
14 Jan	BTH	14:30	14:35	Mascot Ceremony 12.5 km Short Individual W	Finish Area Pragelato Ruà
14 Jan	BTH	15:15	15:25	Medal Ceremony 15 km Short Individual M	Medal Plaza Sestriere
14 Jan	BTH	15:25	15:35	Medal Ceremony 12.5 km Short Individual W	Medal Plaza Sestriere
15 Jan	BTH	09:00	11:00	Official Training Single Mixed Relay	Pragelato Ruà
15 Jan	BTH	11:30		Entry Deadline Single Mixed Relay	Pragelato Ruà
16 Jan	BTH	09:15	09:45	Zeroing Single Mixed Relay W / M	Pragelato Ruà
16 Jan	BTH	10:00	10:45	Single Mixed Relay	Pragelato Ruà
16 Jan	BTH	10:45	10:50	Mascot Ceremony Single Mixed Relay	Finish Area Pragelato Ruà
16 Jan	BTH	11:45	12:00	Medal Ceremony Single Mixed Relay	Medal Plaza Sestriere
17 Jan	BTH	09:00	11:00	Official Training Sprint M	Pragelato Ruà
17 Jan	BTH	12:00	14:00	Official Training Sprint W	Pragelato Ruà
17 Jan	BTH	14:30	14:30	Entry Deadline Sprint M/W	Pragelato Ruà
18 Jan	BTH	09:00	09:50	Zeroing 10 km Sprint M	Pragelato Ruà
18 Jan	BTH	10:00	11:15	10 km Sprint M	Pragelato Ruà
18 Jan	BTH	11:30	11:35	Mascot Ceremony 10 km Sprint M	Finish Area Pragelato Ruà
18 Jan	BTH	12:00	12:50	Zeroing 7.5 km Sprint W	Pragelato Ruà
18 Jan	BTH	13:00	14:15	7.5 km Sprint W	Pragelato Ruà
18 Jan	BTH	14:30	14:35	Mascot Ceremony 7.5 km Sprint W	Finish Area Pragelato Ruà



18 Jan	BTH	15:15	15:25	Medal Ceremony 10 km Sprint M	Medal Plaza Sestriere
18 Jan	BTH	15:25	15:35	Medal Ceremony 7.5 km Sprint W	Medal Plaza Sestriere
19 Jan	BTH	09:00	11:00	Official Training 12.5 km Pursuit M	Pragelato Ruà
19 Jan	BTH	12:00	14:00	Official Training 10 km Pursuit W	Pragelato Ruà
20 Jan	BTH	09:15	09:45	Zeroing 12.5 km Pursuit M	Pragelato Ruà
20 Jan	BTH	10:00	10:45	12.5 km Pursuit M	Pragelato Ruà
20 Jan	BTH	10:45	10:50	Mascot Ceremony 12.5 km Pursuit M	Finish Area Pragelato Ruà
20 Jan	BTH	12:15	12:45	Zeroing 10 km Pursuit W	Pragelato Ruà
20 Jan	BTH	13:00	13:45	10 km Pursuit W	Pragelato Ruà
20 Jan	BTH	13:45	13:50	Mascot Ceremony 10 km Pursuit W	Finish Area Pragelato Ruà
20 Jan	BTH	14:30	14:40	Medal Ceremony 12.5 km Pursuit M	Medal Plaza Sestriere
20 Jan	BTH	14:40	14:50	Medal Ceremony 10 km Pursuit W	Medal Plaza Sestriere
21 Jan	BTH	09:00	10:45	Official Training 15 km Mass Start M	Pragelato Ruà
21 Jan	BTH	11:00	12:45	Official Training 12.5 km Mass Start W	Pragelato Ruà
22 Jan	BTH	08:00		Confirmation of Entries Mass Start M	Pragelato Ruà
22 Jan	BTH	09:15	09:45	Zeroing 15 km Mass Start M	Pragelato Ruà
22 Jan	BTH	10:00	10:50	15 km Mass Start M	Pragelato Ruà
22 Jan	BTH	10:00		Confirmation of Entries Mass Start W	Pragelato Ruà
22 Jan	BTH	10:50	10:55	Mascot Ceremony 15 km Mass Start M	Finish Area Pragelato Ruà
22 Jan	BTH	11:15	11:45	Zeroing 12.5 km Mass Start W	Pragelato Ruà
22 Jan	BTH	12:00	12:45	12.5 km Mass Start W	Pragelato Ruà
22 Jan	BTH	12:45	12:50	Mascot Ceremony 12.5 km Mass Start W	Finish Area Pragelato Ruà
22 Jan	BTH	13:40	13:50	Medal Ceremony 15 km Mass Start M	Medal Plaza Sestriere
22 Jan	BTH	13:50	14:00	Medal Ceremony	Medal Plaza



				12.5 km Mass Start W	Sestriere
23 Jan	BTH			Reserve Day	Pragelato Ruà
23 Jan	ALL	20:00		Closing Ceremony	Piazzetta Reale (TO)

5.7.1 CEREMONIES

Mascot Ceremony will be held immediately following the conclusion of the competition. Medal Ceremonies for men and women will be held at Piazza Fraiteve (Sestriere). For more information, please refer to the day-by-day schedule in the previous section.

5.7.2 TRAINING

Unofficial training at Pragelato-Ruà is scheduled from 12th January 2025. Additional Training possibilities starting from 9th January depending on snow and weather conditions, with transportation provided by the OC. Exact times for those training windows are still being finalized with OC along with any applicable training booking process, and this will be communicated to all Delegations as soon as possible. (Paola: link for training possibilities would be better here)

5.7.3 RESERVE DAY

The OC will do its best to hold all competitions on the scheduled days. However, under exceptional weather conditions, the competitions may have to be postponed/rescheduled to the specified Reserve Day, 23rd January 2025.

5.7.4 GENERAL TECHNICAL MEETING

The 1st General Technical Meeting will be held on 13th January 2025 at 14:10 at Pragelato, during which the Head of Delegation or his/her representative shall confirm and sign the official entry list of athletes.

Only athletes with an active IBU-ID are allowed to participate in each Biathlon event. Entries are controlled by the Organizing Committee and the IBU. Only with an accreditation card approved by the CIC can an athlete be considered in the drawing of a starting list and be entitled to participate in any of the competitions. Any further details and clarifications which are not yet described in the Technical Handbook will be communicated at the respective Team Captain's Meetings following the schedule above.

5.8 Equipment

5.8.1 COMPETITION EQUIPMENT

The purpose of the IBU Materials Catalog is to regulate all aspects of materials relating to Biathlon competitions. It is based on the binding nature of the IBU Event and Competition Rules and is part of those rules. The Materials Catalog provides the definitions, current specifications and requirements of all competition-related materials, the approval process for the admission of



new materials, and the inspection procedures for enforcing the materials regulations. All equipment used by athletes is governed by the IBU Event and Competition Rules.

5.8.2 RIFLES AND AMMUNITION

Ammunitions are **prohibited** in all Village areas and will need to be checked and deposited in the ammo storage locker room.

See the Rifle and Ammunition Sport Policy for information regarding temporary import and export of rifles and ammunition, as well as storage during competition. (see annex BIATHLON RIFLES & AMMUNITION POLICY in section 8)

5.8.3 STORAGE AND WAXING ROOMS

The Torino 2025 FISU World University Games will provide sport equipment storage and waxing rooms for the teams. All facilities are built and organized according to all international requirements. Waxing rooms and cabins for Biathlon will be provided on site at the competition venue. Sections will be allocated to the respective nations and shared among their sports.

5.8.4 WAXING ROOM EQUIPMENT

The wax rooms are equipped with special tables and equipment for preparing skis with lighting, several electric outlets, adequate heating, ski racks and waste bins.

Waxing cabins and ammunition storage for athletes competing in Biathlon will be located in the BTH facility. Rifle storage will be housed in ?TBD?.

The OC is planning on providing one (1) waxing benches in each waxing cabin/area. Each waxing area (for all relevant sports) will have an ample supply of 220v power, plug-ins and extensions.

The OC will NOT be providing power converters/transformers, waxing irons, vises, etc. Missing eventual ski preparing equipment can be available in sport shops or by contacting directly sport equipment factories.

5.8.5 FLUOR CONTROL

As stated in FISU Technical Regulation for the Torino 2025 FISU World University Games, the OC will follow the most recent IBU Technical Rules. Full implementation of the fluor wax ban is applied for the Torino 2025 FISU World University Games events. Testing procedure is in the process of development to ensure that all events will be regulated not using fluorine waxes which is mandatory for IBU competitions.

All athletes and team TO must know that fluor use is officially banned, therefore everyone must follow the rules accordingly.



As stated in FISU Technical Regulation for the Torino 2025 FISU World University Games, the OC will follow the most recent IBU Technical Rules.

Flour wax is banned for the Torino 2025 FISU Games. Common waxing is not applied but flour tests might be organised.

5.9 Doping Control

Doping Control will be carried out in accordance with the WADA World Anti-Doping Code and FISU regulations: https://wugtorino2025.com/wp-content/uploads/2024/11/20240206_Torino-2025-FISU-Games-Regulations-Feb2024-1.pdf. Conditions for doping control procedures will be provided during the competitions at all sports venues.

5.9.1 LIST OF PROHIBITED SUBSTANCES

The actual list of prohibited substances and methods is defined in accordance with WADA international standards. National University Sports Federations will be responsible for ensuring that their delegations, namely athletes, are made aware of the actual copy of the prohibited list. Ignorance of the prohibited list contents will in no way constitute a valid excuse for any participant of the Torino 2025 FISU World University Games violating valid FISU Anti-Doping Rules. For the current WADA list of prohibited substances and methods, please refer to the following website: www.wada-ama.org

5.9.2 TESTING

The required number of samples will be selected during the “in-competition” and “out-of-competition” periods in accordance with the Test Distribution Plan. “In-competition” is defined as the period commencing 12 hours before a competition in which the athlete is scheduled to participate through to the end of such competition, and the sample collection process related to such competition. “Out-of-competition” is defined as any doping control which is not “in-competition.” During the Torino 2025 FISU Games, athletes can be tested at any time without prior notice. Urine and/or blood samples will be collected in compliance with the WADA International Standard for Testing and Investigations (ISTI). A paperless system will be used for the sample collection. The testing will be conducted by Doping Control Officers (DCO) from the National Anti-Doping Organization (NADO), an anti-doping organization accredited by WADA. Testing will be conducted under the supervision of the FISU International Medical Committee. The samples collected at competition venue doping control stations will be transported to the WADA approved laboratory in Italy. All results will be sent to the Chairman of the FISU International Medical Committee and entered into the ADAMS system. In the event of a violation of FISU Anti-Doping rules, the responsibility of processing the results lies with the FISU International Medical Committee.



In the event of setting a national record, doping testing of the athlete is carried out at the expense of his/her National University Sports Federation.

5.9.3 DOPING CONTROL STATIONS

Doping control stations are located at each sports venue or in close proximity. All doping control stations will be marked with signs, including signage directing athletes to the stations. After the completion of the doping control procedure, all samples collected at each doping control station will be delivered to the central doping control station together with the necessary support documentation (doping control protocols) for further registration in the ADAMS system. All samples will be packaged and sent to the WADA accredited anti-doping laboratory in accordance with international standards. All information concerning the doping control program during the Torino 2025 FISU World University Games is confidential according to WADA and FISU requirements. When visiting a doping control station, athletes are required to have accreditation cards.

- The doping control station for Biathlon athletes will be located in Pragelato Plan.

5.9.4 THERAPEUTIC USE EXEMPTIONS (TUE)

Torino 2025 FISU World University Games participants who require Therapeutic Use Exemptions (TUE) must make an appropriate request to their National Anti-Doping Organization or International Federation before participation in the Torino 2025 FISU Games. The World Anti-Doping Agency International Standard for TUEs will be applied in this case. Every athlete who uses a substance or a method included in the list of prohibited substances is obliged to be in possession of a completed TUE form of the established standard from the moment of arrival until the departure from the Village after the Closing Ceremony of the Torino 2025 FISU World University Games.

If there is a need for the use of a prohibited substance or a prohibited method for medical reasons after the opening of the Torino 2025 FISU Games, an athlete must submit a request for TUE to the FISU International Medical Committee as a matter of urgency (antidoping@fisu.net). The responsibility for completing the TUE form and submitting an application to the FISU International Medical Committee lies with the delegation physician.

If the delegation does not have its own physician, the athlete shall submit a request for TUE to the FISU International Medical Committee (antidoping@fisu.net), with the attachment of medical documentation confirming the need for providing him/her with emergency medical treatment.

5.9.5 STRUCTURE

Chair of FISU International Medical
Committee

Dr. Dusan HAMAR (SVK)



OC Head of Medical Services	Dr. Gianluca GHISELLI (ITA)
OC Head of Doping Control	Dr. Francesco LEONELLI (ITA)

5.10 Mascot and Medal Ceremonies

5.10.1 MASCOT CEREMONY

The Mascot will be handed to the winners right after the confirmation of the final results. They will be asked to pose with the Mascots in hand for the Winners Picture in front of the V-board in the finish area.

The winners will be announced by the Sport Presentation Speaker and the Media will be invited to take the picture or the video of the winners.

5.10.2 MEDAL CEREMONY

- The Medal Ceremonies will be held in Piazza Fraiteve (Sestrière) according to the detailed Day-by-Day schedule as found in Section 5.7.
- The official language for the Medal Ceremonies will be English.
- The medalists from each event must attend the Medal Ceremony. In the event that a medalist is unable to attend, the medal is delivered to an official of the relevant delegation. He/she must be dressed in the delegation's official outfit. He/she must not mount the podium but stand behind it. The awarders will hand the medal and medal box over the podium. During the FISU Anthem, the delegation official stands behind the podium.
- In the event that all medalists cannot be present, the Medal Ceremony will be postponed.

During the Medal Ceremony:

- The athletes are not allowed to bring any national flag or any other national, cultural or religious symbol on the podium.
- The national flags of the first three (3) medalists will be raised and the only anthem played will be the FISU Anthem, the Gaudeamus Igitur.
- During the playing of the FISU Anthem and the raising of the flags, athletes shall face the flags and always conduct themselves in a dignified manner. No national anthem is played during the ceremony.
- Athletes are expected to take off their caps and sunglasses when receiving their medal and keep items in hand throughout the ceremony (i.e., playing of the FISU Anthem and raising of the flags).
- Athletes, authorities and accompanying persons are required to face the flags while they are being raised and the FISU Anthem is being played.
- The medalists are expected to attend the ceremony in the uniforms they wore at the Opening Ceremony but are also allowed to attend the official ceremony wearing sport uniforms when the ceremony takes place immediately following the competition.



- After the medals are awarded, athletes must remain in the awarding area for photos on the podium with medals.
- In order to get the best photos, athletes should follow the recommendations of photographers.

5.10.3 DIPLOMA OF HONOR

- The athletes ranked one (1) to eight (8) will receive a Diploma of Honor.
- For team events, each team member, from teams ranked one (1) to six (6), will receive a personal Diploma of Honor mentioning his/her name and the team ranking.
- Diplomas of Honor are not distributed at the Medal Ceremony. They will be sent in PDF format to the Head of Delegation or an appointed representative of each delegation after the end of the event. Paola: is it still the case or will be given in paper format?

5.11 Media Interviews

Venue Media Centers for media representatives are organized at all Torino 2025 FISU World University Games competition sites.

At the conclusion of a competition, all athletes must leave the Field of Play through the mixed zone, where brief interviews will be held. Every athlete/coach should be ready to communicate with media representatives upon their request. Team representatives should be prepared to provide their athletes with a warm jacket or a blanket prior to entering the mixed zone.

A Media Operation staff will coordinate the exchanges between athletes/coaches and media. Support for translation in English will be provided during the mixed zone interviews. If an athlete/coach does not speak this language, they should invite their team interpreter to the mixed zone.

Media conferences are held at the beginning and the end of the Torino 2025 FISU World University Games and upon necessity.

5.12 Sport Information Services

5.12.1 ONLINE SPORT INFORMATION SERVICES

Online information will be available on the Torino 2025 FISU World University Games' official website: <https://wugtorino2025.com/>

In addition, more detailed information and publications for teams can be accessed under the following link: <https://wugtorino2025.com/delegation-services/>

5.12.2 SPORT INFORMATION AT THE VENUE

- A Sport Information Desk (SID) will be located at each venue, providing the most recent information related to the competitions and receiving requests from the team representative(s).



- The Sport Information Desk will operate from 13 January 2025 until the final day of competition in accordance with the competitions and training schedules (one (1) hour before and after the events).

5.12.3 SPORT INFORMATION DISTRIBUTION

Information	Online	Venue	Delegation Accomodation
Competition Schedule	+	+	+
Start List/ Result List	+	+	+
Change to Schedule	+	+	+
Special Announcements	+	+	+
Weather Information	+	+	+
Medal Table	+		
Technical Handbook	+		
FISU Regulations	+		
Other Information		+	+
Answer to Team Questions		+	+

6. Service Information

6.1 Accreditation

For the Accreditation procedure please refer to the HoD Manual.

IMPORTANT: A personalized accreditation card with a photo, name and function of the cardholder carries information about the access rights and privileges available to him/her. Upon arrival, the accreditation card, equipped with a QR-code, enables members of delegations a 24-hour temporary access to the Torino 2025 FISU World University Games venues in accordance with access rights on the accreditation card. The temporary access does not allow participation in the competition. After the CIC's approval, the accreditation card will be fully activated.

6.2 Radio Frequency Control (To be updated)

At all Torino 2025 FISU World University Games venues, any use of radio frequencies (e.g., walkie-talkies, radio stations, wireless cameras, Wi-Fi access points, wireless microphones, FM-transmitters, and any other wireless equipment) requires a temporary radio license from the Ministry of Economic Development (Ministero dello Sviluppo Economico, MISE) and must ensure



it doesn't conflict with the Italian emergency services, including the police, EMTs (Emergency Medical Technicians), and other first responders.

If you are planning to utilize any of the items noted above which require bandwidth on the frequency spectrum, please fill out the Frequency Form (to be provided at a later stage) and send it to technology@wugtorino2025.com.

The Organising Committee will be registering a range of available Radio Frequencies starting from September 2024. We will then provide the frequencies available to each team/country to determine if their existing equipment will work within the range available in the Torino region.

Your wireless devices will be registered and checked by the frequency-organizer. You will receive a confirmation if the devices can be registered in Italy.

By the end of November, you will receive the frequencies allocated to you.

Important: Every frequency user is responsible for submitting registration details for all their wireless devices accordingly and in a timely manner.

Fees/costs (tbc) for temporary radio licenses must be paid to the Organising Committee by the delegation or frequency users applying for an Italian radio license.

6.3 Insurance and Responsibilities

Participating countries must adhere to the insurance requirements and conditions as stipulated in Section 5.6 of the Torino 2025 FISU World University Games Regulations.

6.4 Transportation

6.4.1 TRANSPORTATION SYSTEM FOR ATHLETES AND TEAM OFFICIALS (TA)

The transportation system for athletes and team officials will provide transport services from 9th to 23rd January 2025. Routes in the transportation system for athletes and team officials are marked with the abbreviation "TA" (Transport Athletes). Vehicles are being equipped with placards indicating route numbers for the individual and team sports and spectating athletes.

Route Number	TA xxx
Sport	Biathlon
Route	Xxx
Distance to the Venue	Xx km
Travel Time	Xx min



6.4.2 TRANSPORTATION SERVICE FOR ALL ACCREDITED STAKEHOLDERS – TRANSPORT CONNECT (TC)

Scheduled buses are provided between Torino and the competition venues for all accredited stakeholders from 12th – 23rd January 2025. Buses will operate in accordance with the competition schedule. All athletes and officials, regardless of their delegation and sport, will have access to the bus transportation systems TC.

Detailed information will be available in the Transportation Guide.

6.5 Food and Beverages

This information will be included in the next version of the Technical Handbook.

6.5.1 MEALTIMES

The dining hall hours of operations will be adjusted to accommodate Delegation's Competition Schedule for early morning or late-night competitions.

6.5.2 FNB SERVICES AT THE COMPETITION VENUES

- An athletes' lounge will be providing snacks one (1) hour prior to the competition until one (1) hour after the competition. This service is provided from the start of the first official training.
- On venue meals for athletes will also be provided during competition days.

6.6 Medical Services

6.6.1 CONDITIONS OF MEDICAL ASSISTANCE

During the Torino 2025 FISU World University Games, in the event of life-threatening diseases and conditions or in any situations requiring urgent medical treatment, emergency medical assistance is provided to all client groups from 8-25 January 2025. Individuals that intend to arrive earlier or leave later must arrange for their own adequate travel insurance to cover medical costs. Immediate (except for emergency) and planned medical care is provided based on:

Immediate (except for emergency) and planned medical care is provided based on:

- an obligatory medical insurance agreement
- a paid medical service agreement
- a voluntary health insurance agreement
- health insurance

6.6.2 MEDICAL SUPPORT STRUCTURE

- Mobile medical crews in the Field of Play of the competition venues
- Ambulance crews at the competition venues
- Dedicated hospitals and specialized medical facilities



- o Medical stations at not competition venues as hotel and villages.

*Please refer to the Medical Services Guide for more details.

6.6.3 MEDICAL SUPPORT IN THE ACCOMMODATION SITES

Details can be found in the Medical Services Guide. Information to be defined at a later stage.

6.6.4 DEDICATED HOSPITALS AND SPECIALIZED MEDICAL FACILITIES

Additional information and locations of all hospitals in the region will be available in the Medical Service Guide.

6.7 Weather

For weather information visit the following link:

https://www.arpa.piemonte.it/rischi_naturali/snippets_arpa/meteo/index.html

Otherwise, weather information can be picked up also at Sport Information Centers at each of the Villages as well as other locations, including on the Games website.

7. OC Contacts

Title	Email
Accreditation	accreditationtorino2025@wugtorino2025.com
Sport Department	sport@wugtorino2025.com
Sport Entries	sportentries@wugtorino2025.com
Delegation Services	delegationservices@wugtorino2025.com
ITO Service Desk	itoservices@wugtorino2025.com



8. Appendices

ANNEX 1



WUG Torino 2025 FISU Winter Games

BIATHLON RIFLES & AMMUNITION POLICY

Transport and Shipping of Biathlete Rifles and Ammunition References:

Italian Law – Parte II ARMI DM 5th JUNE 1978 Objective/Rationale.

This policy details the regulations for the importation and exportation of Biathlete rifles and ammunition into and out of Italy.

Regulations for Importation and Exportation of Biathlete Rifles and Ammunition

The following regulations apply to respective athletes, coaches, teams for the temporary importation and exportation of Biathlete rifles into and out of Italy:

1. Italian Delegation: All Italian athletes and team officials must possess a “Licenza Transporto Armi”, issued by the Italian Polizia under Parte II ARMI DM 5th June 1978, in order to transport and carry a Biathlete rifle within Italy or inside the Biathlon Venue of Pragelato.

2. EU Member Delegations: Prior to entering Italy, biathletes and officials from EU member NUSF Delegations must possess the following documents:

2.1 Rifles import / export declaration form in three copies (annex 1)

2.2 Valid European Rifles Certificate.

2.3 Official Invitation to Torino 2025 FISU World University Games

3. Non-EU Delegations: Prior to entering EU countries or directly into Italy, biathletes and officials from non-EU NUSF Delegations must possess the following documents:

3.1 Temporary Import and Export License (three copies) from the Chamber of Commerce in their country of origin.

3.2 Valid Rifle License from their country of origin.

3.3 Participation Form of Invitation for World University Games Winter Torino 2025

3.4 Rifles import / export declaration form in three copies (annex 1)

In addition to the documents required by the Italian Law, all the Delegations competing in Biathlon must fill in and submit to Torino 2025 OC the Rifles and Ammunition Form not later than DD Month YYYY (annex 2)

Temporary Import / Export Rifles and Ammunitions Declaration form must detail the following information:

- › Name Athlete/Coach
- › Date of Birth
- › Identification document number
- › Type and Model of Rifle
- › Serial Number
- › Rifle Caliber
- › Quantity of Ammunition
- › Validity of Permission
- › Place & Duration of stay in Italy
- › Place of Competition Procedure for Entry and Exit from Italia.

Procedures for Entering and Leaving Italy

The OC sends out the Temporary Import / Export Rifles and Ammunitions Declaration form in digital form.

Upon arrival in an Italian port of entry/exit (border crossing, international airport, or seaport), Biathletes and Officials carrying rifles and ammunition are to report to the nearest Police Station in order to have their Rifle and Ammunitions Import/Export Declaration Form stamped/sealed.

The same procedure will apply upon departure from Italy.

Transportation of Rifles and Ammunitions

Italian Legislation for Transport and Carriage of Biathlon Rifles.

A maximum of three (3) rifles can be temporary imported by one person.

A maximum of 1000 cartridges can be carried by one person.

All Biathlete rifles (with bolt removed) and ammunition must be transported in separate lockage containers - hard cases or similar for Biathlete rifles and secure metal box for ammunition.

Procedure upon arrival

Upon arrival, Biathlete rifles and ammunition must be declared to OC Team Services staff at the Biathlon Venue in Pragelato Ruà. Contact person: XXX

Important:

Biathletes, coaches arriving and crossing borders by car, if not checked, will have to report at arrival in Pragelato to OC staff in order to register and seal the import document by police authorities (for the arrival by train the procedure will be the same).

Ammunition will be stored in secured room at the Biathlon Venue in Pragelato Ruà. For Rifles, OC is dealing with authority to allow the rifles to be kept in athletes accommodation in order to give dry shooting possibility.

Biathletes, coaches arriving directly in Italy by flight have to present, at custom control at airport, the declaration asking to seal.

For a smooth procedure it is important:

- To inform the OC about arrival & departure airport in Italy
- To communicate the OC arrival & departure day
- To inform the OC about flight schedule: arrival time and departure time and possible connecting flights
- To inform the OC about flight Company

This will facilitate OC to inform airport Police about arrivals and departures making procedures less stressful.

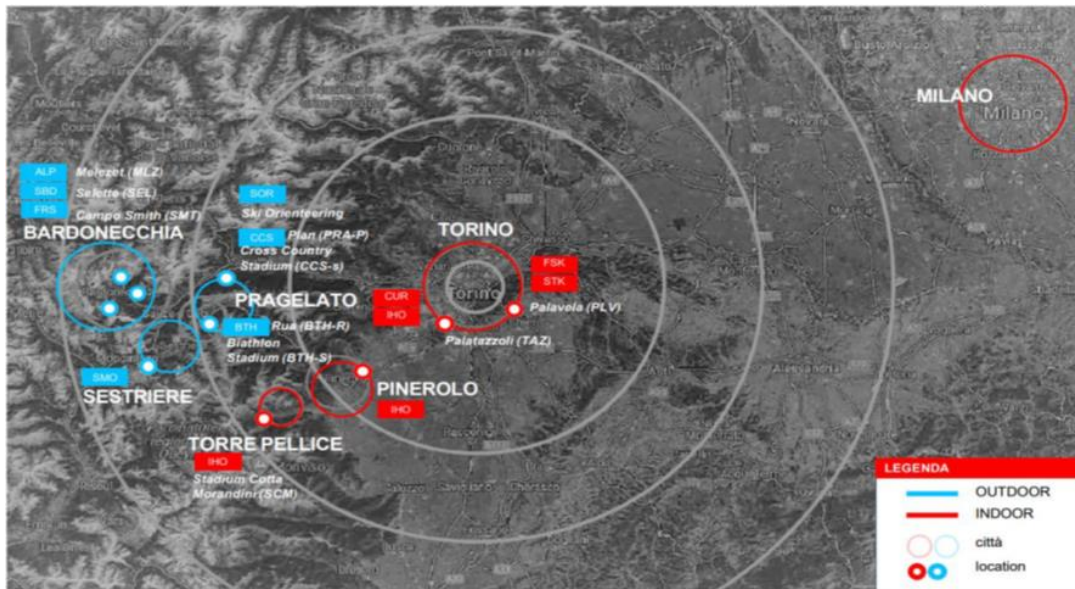
Recommendations:

As soon as declaration form (annex 1) is ready it is necessary to send a copy to OC in order to have it controlled and delivered to the Police station at the arrival & departure airport.

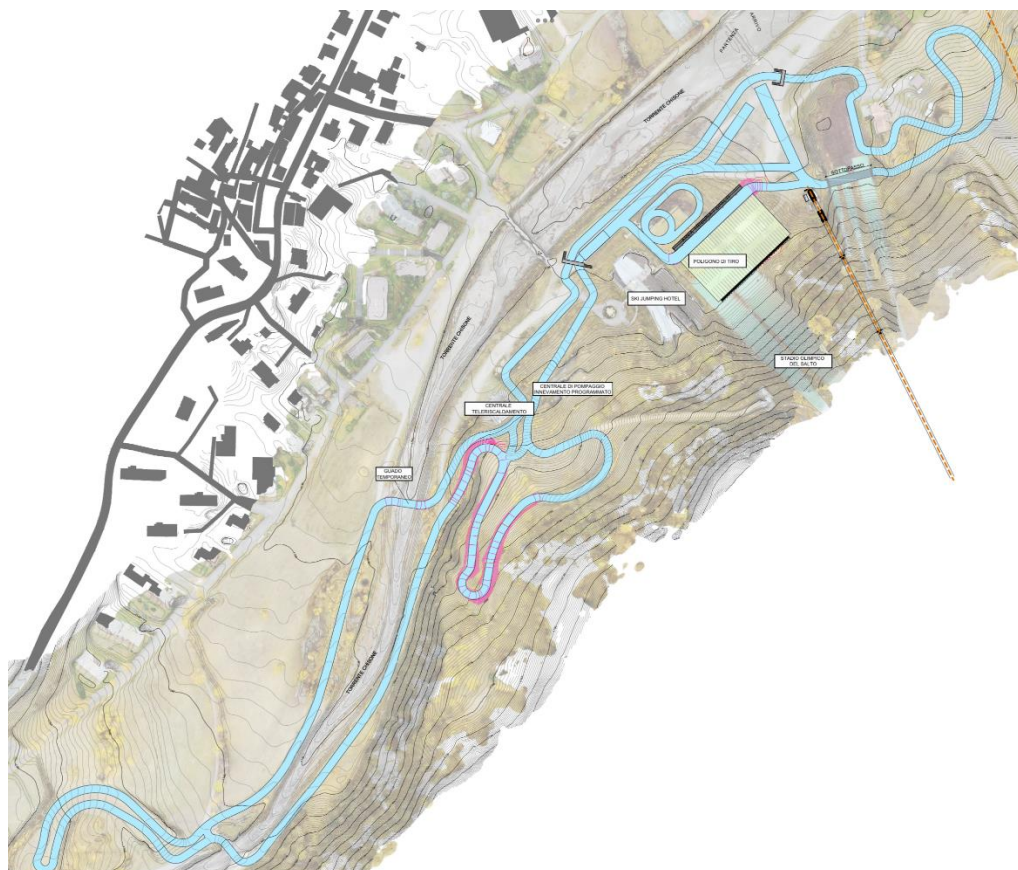


8.1 Venue Layouts

8.1.1 VENUE PLANS

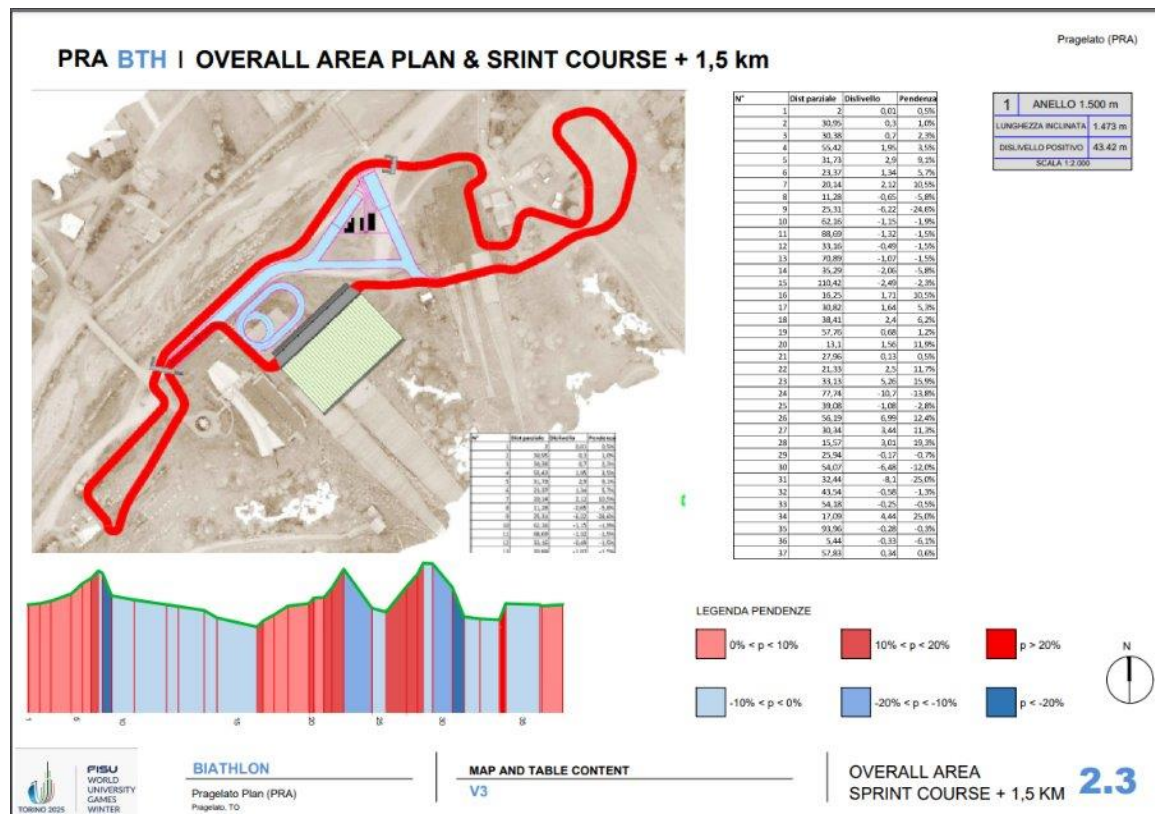


8.1.2 OVERVIEW COURSES AND TECHNICAL DATA



8.1.3 VENUE LAYOUTS

8.2 Geographical Overview Venues



INSTITUTIONAL PARTNER

Evento organizzato con il supporto di



Ministro per lo Sport e i Giovani



Con il patrocinio di



MAIN SPONSOR



Assicurazioni



FISU PARTNER



QIAODAN

MEDIA PARTNER



OFFICIAL SUPPLIER

