



FISU
WORLD
UNIVERSITY
GAMES
WINTER



TECHNICAL HANDBOOK

Ice Hockey

Version 05/12/2024

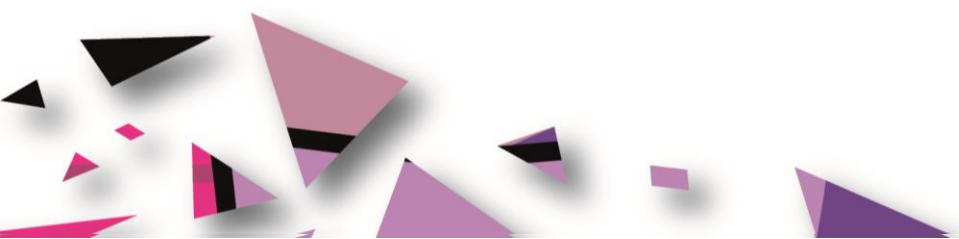


TORINO, ITALY
13 - 23 JANUARY 2025

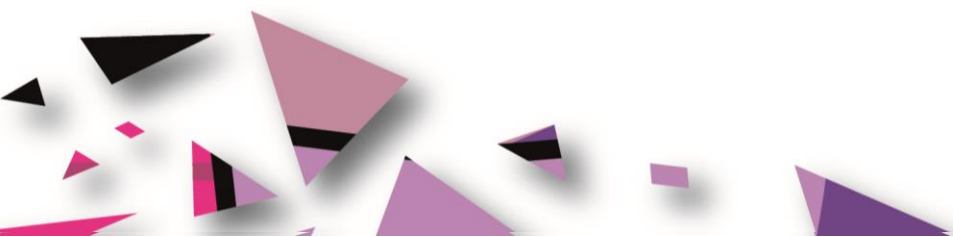


TABLE OF CONTENTS

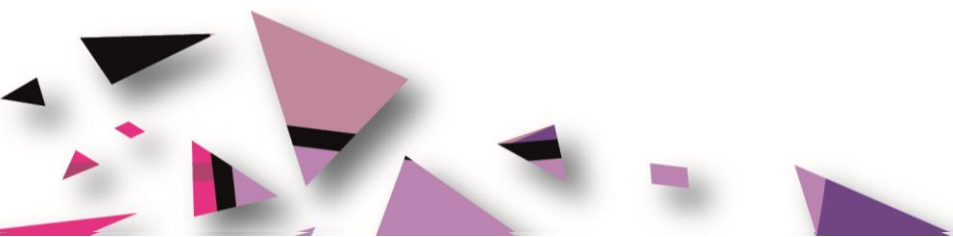
1. Welcome Messages	1
2. Abbreviations	3
3. FISU International Technical Committee	4
4. General Information	5
4.1 Torino 2025 FISU World University Games.....	5
4.2 Competition Schedule.....	5
4.3 Opening and Closing Ceremonies	5
5. Competition Information	5
5.1 Technical Committee	5
5.2 International Technical Officials	6
5.3 Competition Structural Chart.....	8
5.4 Technical Regulations	11
5.4.1 Entries	11
5.4.2 Protest and Appeal.....	12
5.5 Competition Format.....	12
5.5.1 Number of Players on the Line-Up Sheet	12
5.5.2 Tournament Format.....	13
5.5.3 Three-Point System (2024 IIHF Sport Regulations).....	14
5.5.4 Tie Breaking Formula (2024 IIHF Sport Regulations)	14
5.5.5 Overtime Operations (2024 IIHF Sport Regulations)	15
5.5.6 Penalty-Shot Shootout Procedure (2024 IIHF Sport Regulations)	19
5.6 Competition and Training Venue Information.....	20
5.6.1 General Information	20
5.6.2 Venue Layouts.....	21
5.7 Day-by-Day Schedule	21
5.7.1 Ceremonies	23
5.7.2 Training	24
5.7.3 General Technical Meetings.....	24
5.8 Ice-Hockey Uniforms	24
5.9 Doping Control	25
5.9.1 List of Prohibited Substances.....	25
5.9.2 Testing.....	25



5.9.3 Doping Control Stations	25
5.9.4 Therapeutic Use Exemptions (TUE)	26
5.9.5 Structure	27
5.10 Mascot and Medal Ceremonies	27
5.10.1 Mascot Ceremony	27
5.10.2 Medal Ceremony.....	27
5.10.3 Diploma of Honor.....	28
5.10.4 Diploma of Merit.....	28
5.11 Media Interviews	28
5.12 Sport Information Services	29
5.12.1 Online Sport Information Services.....	29
5.12.2 Sport Information at the Venue.....	29
5.12.3 Sport Information Distribution	29
6. Service Information.....	30
6.1 Team Services	30
6.1.1 Team Service Office	30
6.1.2 Team Sport Attaché	30
6.1.3 Dressing Rooms.....	30
6.1.4 Skate Sharpening & Equipment Repair.....	30
6.1.5 Laundry Service	31
6.1.6 Towels	31
6.1.7 Penalty Box	31
6.1.8 Fitness Room.....	31
6.1.9 Other Arena Services	32
6.1.10 Pucks	32
6.1.11 Ice Practices - Cancellation	32
6.1.12 OC Contact Info.....	32
6.2 Accreditation.....	32
6.3 Radio Frequency Control	33
6.4 Insurance and Responsibilities.....	33
6.5 Transportation	33
6.5.1 Transportation System for Athletes and Team Officials (TA)	33
6.5.2 Transportation Service for All Accredited Stakeholders – Transport Connect (TC).....	35



6.6 Food and Beverages.....	35
6.6.1 Mealtimes	35
6.6.2 FNB Services at the Competition Venues	36
6.7 Medical Services.....	36
6.7.1 Conditions of Medical Assistance	36
6.7.2 Medical Support Structure.....	36
6.7.3 Medical Support in the Accommodation Sites	36
6.7.4 Dedicated Hospitals and Specialized Medical Facilities	36
6.8 Weather	37
7. OC Contacts.....	37
8. Appendices.....	38
8.1 M and W Ice Hockey Detailed Schedule	38
8.2 Playoff Team Transportation Plans	39
8.3 Venue Layouts.....	39
8.3.1 Ice Stadium “Cotta Morandini” - Torre Pellice	39
8.3.2 Ice Stadium “Stadio Olimpico” - Pinerolo	40
8.3.3 Ice Stadium “PalaTazzoli” - Torino	40
8.4 Geographical Overview Venues	41



1. Welcome Messages

*Dear delegates,
Dear friends and colleagues,*

The 2025 FISU World University Games Winter in Torino, Piemonte (Italy) is drawing inexorably closer. "Torino" is a name that has a unique and incomparable significance for FISU. Not only was FISU founded in this beautiful city in 1949, but Torino also hosted the first ever Summer Universiade ten years later in 1959. Moreover, Primo Nebiolo, FISU President from 1961 to 1999, also contributed to strongly linking Torino and FISU together.

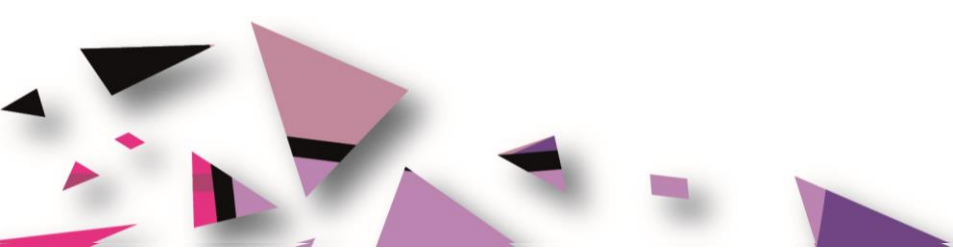
Having held the Winter Olympics in 2006, Torino also hosted the Winter Universiade in 2007. Now, we are all preparing to return to the birthplace of both FISU and the Universiade, but also to the mountains in Sestriere, host of the 1966 Winter Universiade and an important cluster for the upcoming Torino 2025 FISU World University Games Winter.

I am very grateful to the Organising Committee of the Torino 2025 FISU Games Winter, but also to the political, academic and sport authorities who are making this student sporting highlight - set from 13 to 23 January 2025 - possible. It is thanks to their unwavering commitment and belief in the values of university sport that these FISU Games will take place.

I wish you all a smooth and successful preparation for your mission at the Torino 2025 FISU World University Games Winter and look forward to welcoming you to the opening ceremony in Torino on 13 January 2025.



*Leonz EDER
President of the International University Sports Federation*



*Dear Delegates,
Dear Student-Athletes, Coaches, Dignitaries, and Presidents of Member Federations,
Dear all,*

It is a great pleasure for me to present the Technical Handbook for the Torino 2025 FISU World University Games Winter.

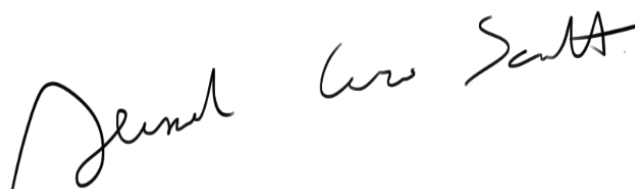
This handbook contains all the necessary information about the Games and the technical aspects for each sport, serving as a comprehensive guide for all participants and delegations involved.

The Torino 2025 FISU World University Games Winter will feature a total of 11 sports, divided into snow and ice disciplines.

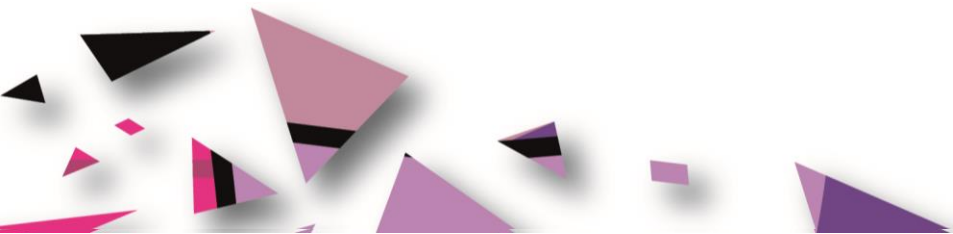
However, what fills me with particular pride is that, for the first time in the history of the FISU World University Games Winter, we will be hosting two parasports competitions: Para Alpine Skiing and Para Cross-Country Skiing.

This event promises the perfect setting for high-level competition across six stunning areas of Piedmont, an Italian region with a rich history in both sports and science: Turin, Sestriere, Bardonecchia, Pragelato, Pinerolo, and Torre Pellice.

I am looking forward to welcoming the big family of the Winter University Sports in Piedmont in just a few months' time!

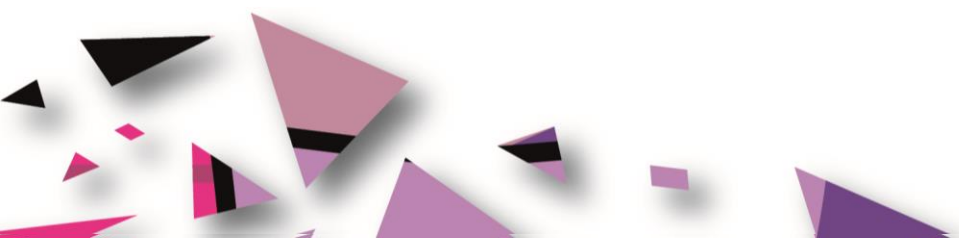
A handwritten signature in black ink, reading "Alessandro Sciretti". The signature is written in a cursive, flowing style.

*Alessandro Sciretti
President of Torino 2025 FISU World University Games*



2. ABBREVIATIONS

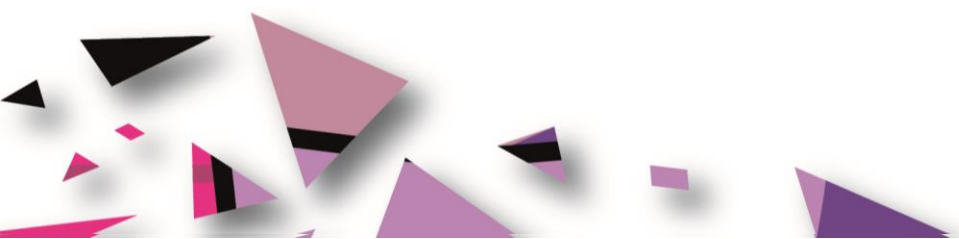
Abbreviation	Name in Full
ADAMS	Anti-Doping Administration and Management System
CIC	FISU International Control Committee
CM	Competition Manager
CMI	FISU International Medical Committee
CT	FISU Technical Committee
DbD	Day by Day Schedule
EC	FISU Executive Committee
FISU	International University Sports Federation
FNB	Food & Beverage
GTM	General Technical Meeting
HoD	Head of Delegation
IF	International Federation
IHO	Ice Hockey
IIHF	International Ice Hockey Federation
ITC	FISU International Technical Committee
ITO	International Technical Official
LOC	Local Organizing Committee
NADO	National Anti-Doping Organization
NF	National Federation
NTO	National Technical Official
NUSF	National University Sports Federation
OC	Organizing Committee
PIN	Pinerolo
SID	Sports Information Desk
STO	Olimpic Stadium Pinerolo



TAZ	PalaTazzoli
TCC	FISU Technical Committee Chair
TCM	Team Captain's Meeting
TD	Technical Delegate
TO	Technical Official
TRP	Torre Pellice
TUE	Therapeutic Use Exemptions
WADA	World Anti-Doping Agency

3. FISU INTERNATIONAL TECHNICAL COMMITTEE

Position	First Name	Last Name	Country
FISU TCC ALP / PARA-ALP	Matjaz	KRANJC	SLO
FISU TCC BTH	Ondrej	RYBAR	CZE
FISU TCC CCS / PARA-CCS	Zofia Stefania	KIELPINSKA	POL
FISU TCC SOR	Zuzana	RYCHLIKOVA	SVK
FISU TCC SMO	Markku	VAUHKONEN	FIN
FISU TCC FRS	Magnus	FERRY	SWE
FISU TCC SBD	Ola	SUNDEKVIST	SWE
FISU TCC CUR	Scott	ARNOLD	CAN
FISU TCC IHO	Reto	BERTOLOTTI	SUI
FISU TCC IHO	Igor	NEMECEK	SVK
FISU TCC FSK	Dingding	LIU	CHN
FISU TCC STK	So Hee	KIM	KOR



4. GENERAL INFORMATION

4.1 Torino 2025 FISU World University Games

Date: 13 - 23 January 2025

Location: Turin, Italy

Sports Program: 11 sports, 96 medal events

Venues: 11 venues

4.2 Competition Schedule

[Download | Torino 2025 \(wugtorino2025.com\)](https://wugtorino2025.com)

4.3 Opening and Closing Ceremonies

Opening Ceremony

Date: 13 January 2025

Location: Inalpi Arena, Corso Sebastopoli, 123, 10134 Torino TO

Beginning of Ceremony: 19:30

Closing Ceremony

Date: 23 January 2025

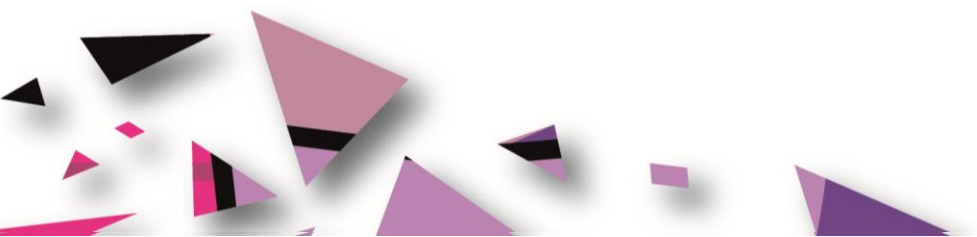
Location: Piazzetta Reale (Torino)

Beginning of Ceremony: 20:00

5. COMPETITION INFORMATION

5.1 Technical Committee

FISU Technical Committee Chair	Igor NEMECEK (SVK)
FISU Technical Committee Chair	Reto BERTOLOTTI (SUI)
Coordinator IHO W/M	Roberto GAY (ITA)
IIHF Technical Delegate	First name SURNAME (cc)

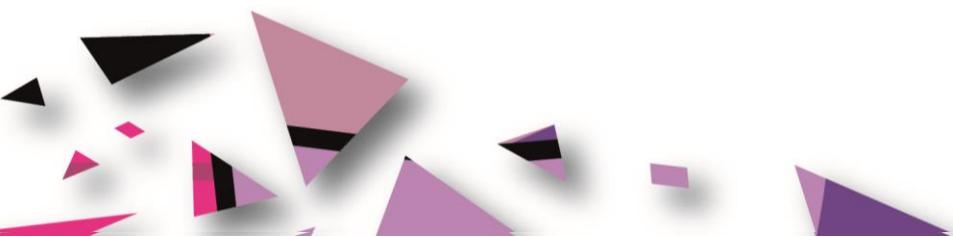


IIHF Medical Supervisor	Matej HANDZAK (SVK)
Competition Manager M (TRP)	Roberto GAY (ITA)
Assistant Competition Manager (TRP)	Nadir Piston (ITA)
Competition Manager M (PIN)	Fabrizio OSELLA (ITA)
Assistant Competition Manager (PIN)	Alberto ANSELMINO (ITA)
Competition Manager W (TAZ)	Massimo SAINATO (ITA)
Assistant Competition Manager (TAZ)	Francesco DI BARI (ITA)

5.2 International Technical Officials

ITOs for MEN

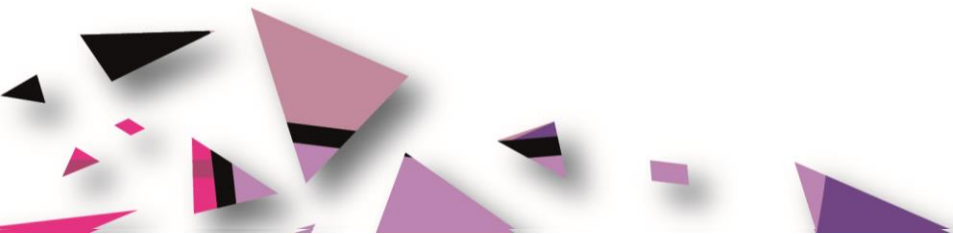
IIHF Supervisors (Men)	Peter ORSZAG (SVK) Thomas SCHURR (GER)
Referees (Men)	Kevin Howard CORBETT (USA) Emils DRUSEIKS (LAT) Daniel EMERSON (CAN) Gergely Péter GEBEI (HUN) Martin JOBBAGY (SVK) Taewoo KANG (KOR) David LAKSOLA (SWE) Timur MOREV (KAZ) Motoki SASAKI (JPN)
Linesperson (Men)	Nurlan ALPYSPAYEV (KAZ) Lukas FLEISCHMANN (ITA) Shane William KANALY (USA) Junseo LIM (KOR) Gustav RUTFORS (SWE) Eryk SZTWIERTNIA (POL) Jozef TICHY (SVK) Brennan WALKER (CAN)



	Ryoya YAMADA (JPN)
--	--------------------

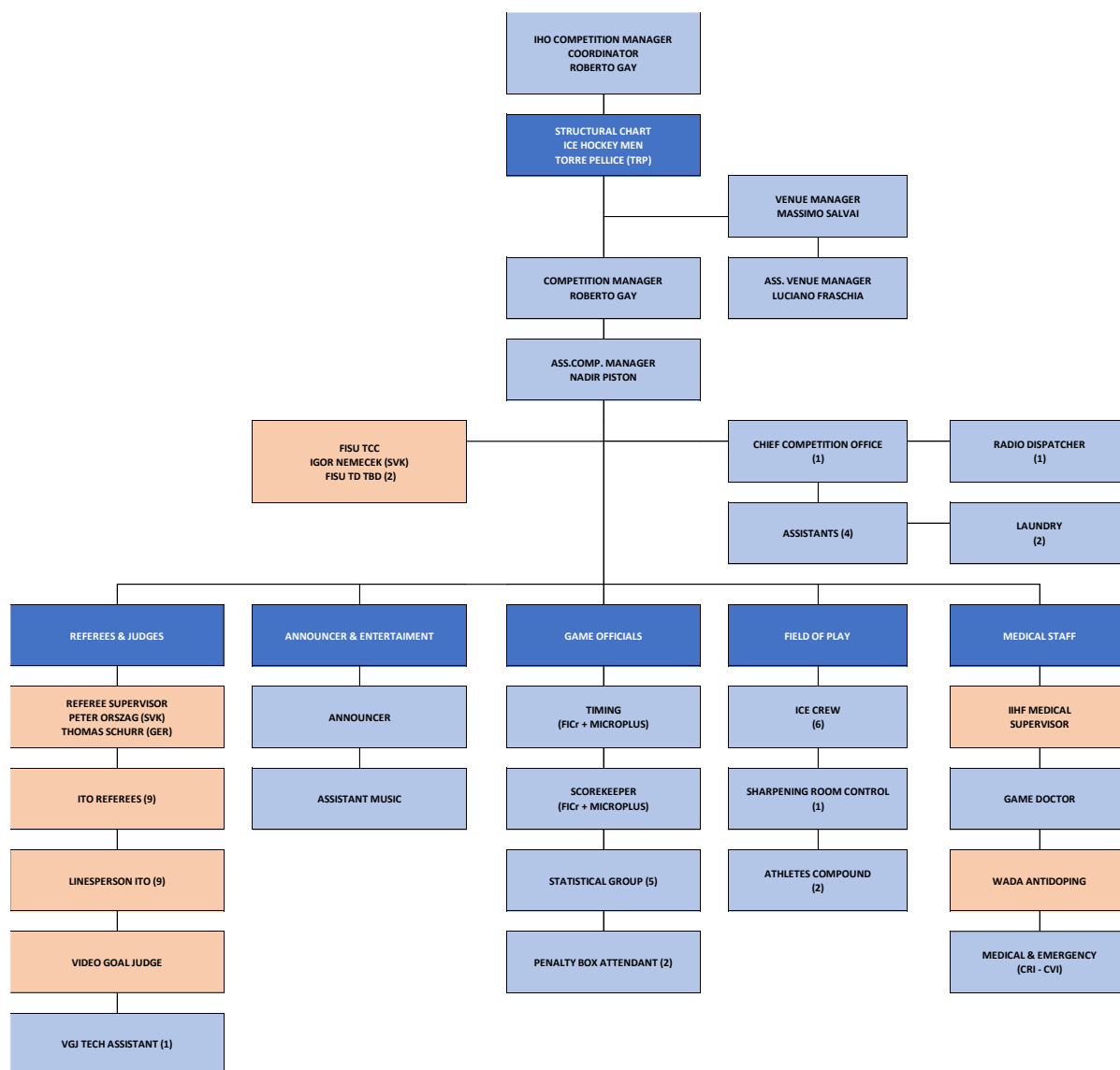
ITOs for WOMEN

IIHF Supervisor (Women)	Tod ANDERSON (CAN)
Referees (Women)	Melissa BOVERIO (ITA) Caroline BUTT (GER) Audrey-Anne GIRARD (CAN) Taylor Ann HILL (USA) Kumiko MATSUO (JPN) Zuzana RIMBALOVA (SVK)
Linesperson (Women)	Mara DA RECH (ITA) Eva Maria MOLEKOVA (SVK) Aino RANKI (FIN) Niina SATO (JPN) Julia WAGNER (GER) Amanda ZIOLA (USA)

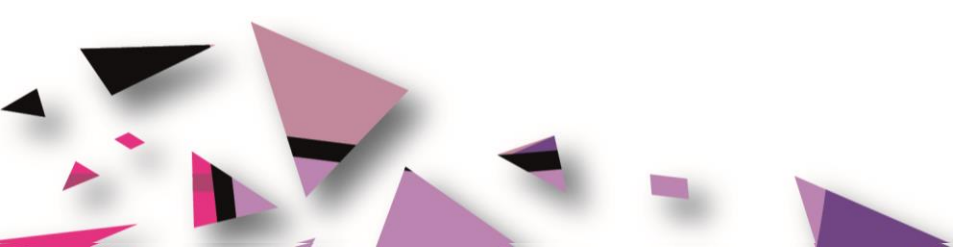
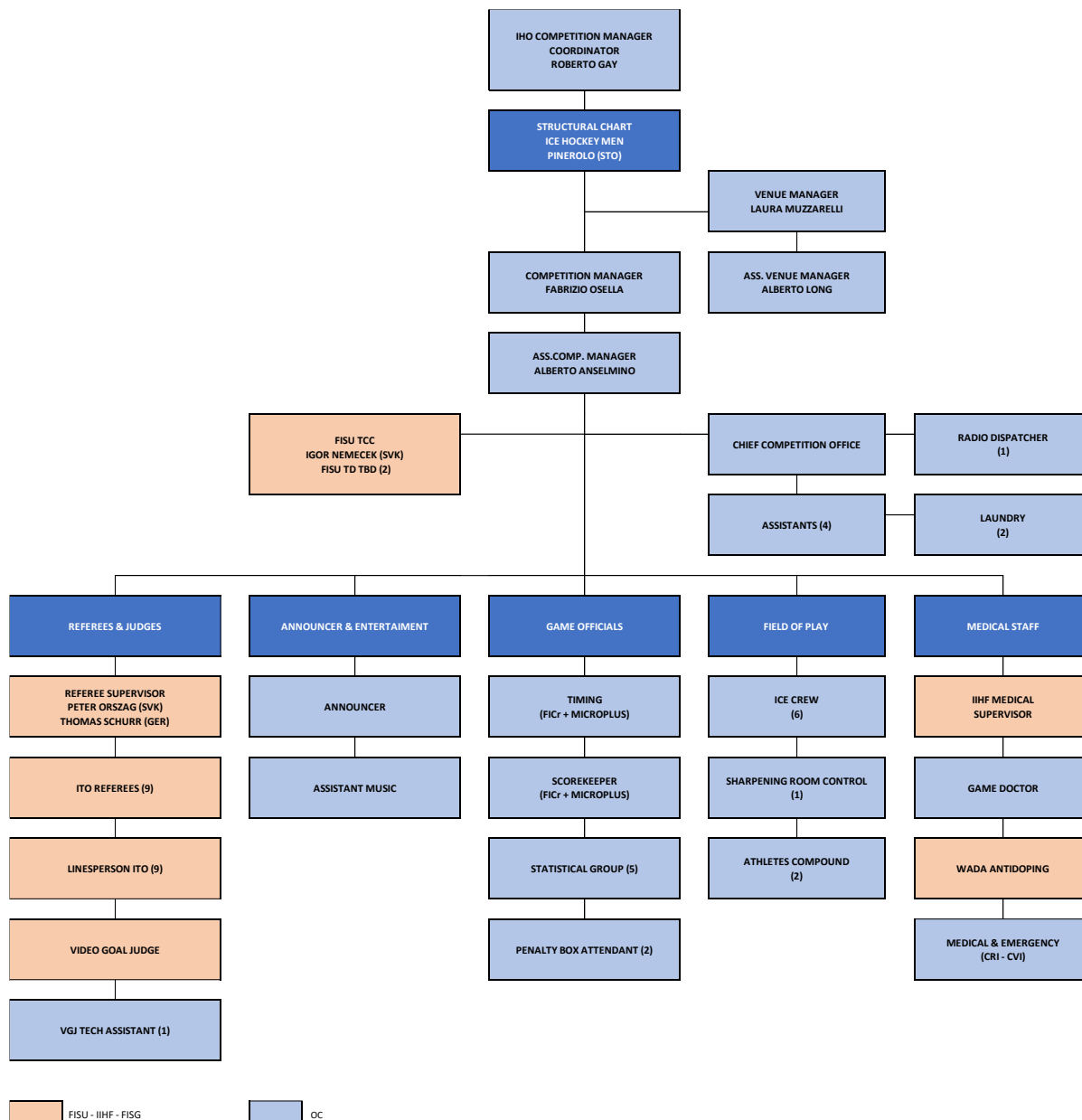


5.3 Competition Structural Chart

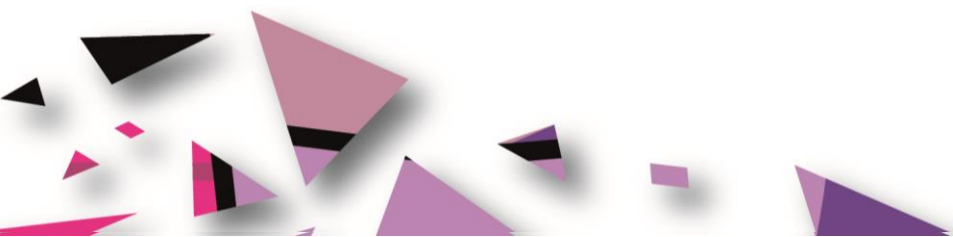
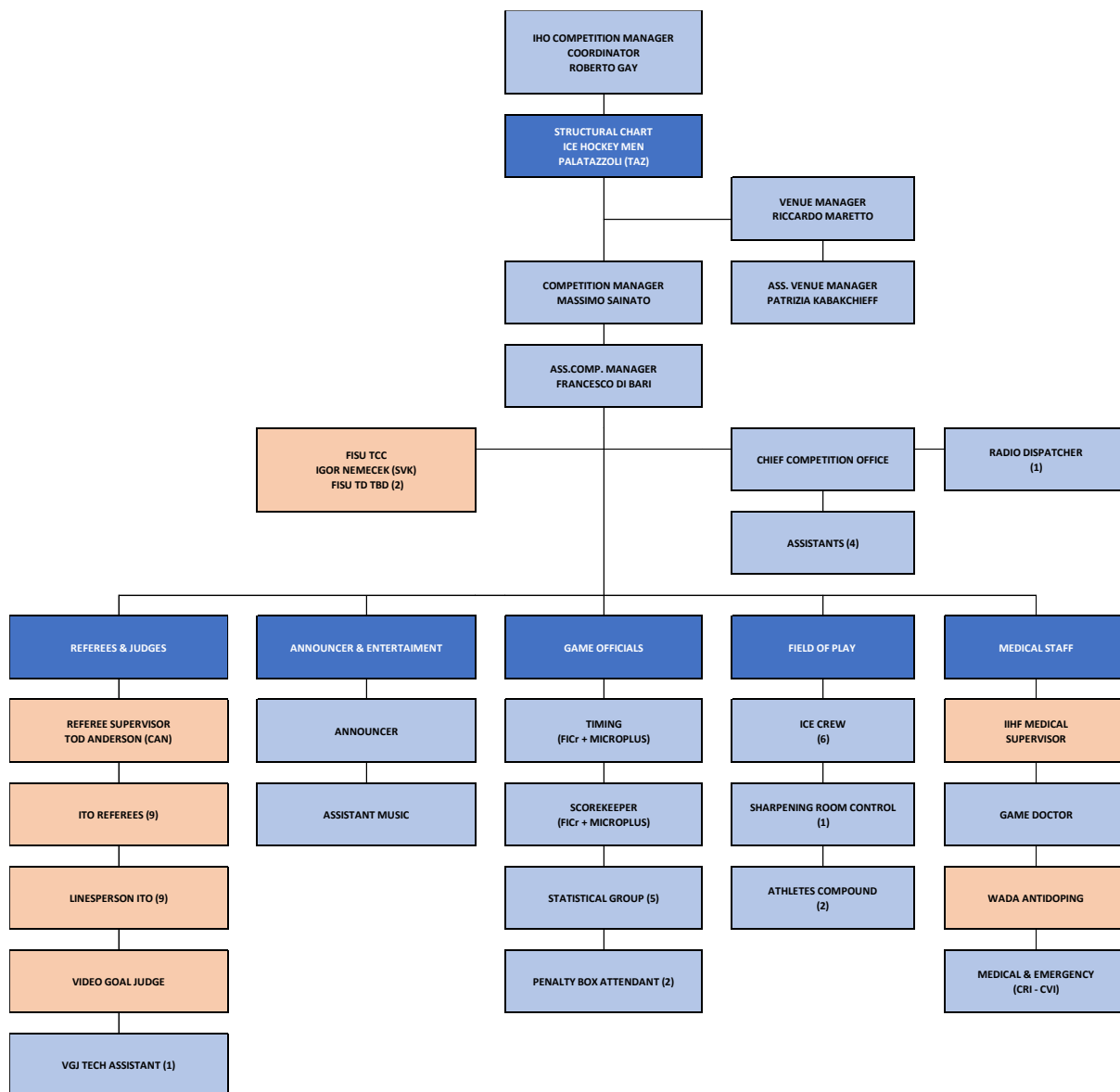
Structural chart Torre Pellice



Structural chart Pinerolo



Structural chart PalaTazzoli



5.4 Technical Regulations

The Ice Hockey events shall be organized in accordance with the most recent regulations of the International Ice Hockey Federation (IIHF), except when specifically amended by these regulations or by the FISU Games International Technical Committee (FISU Games ITC).

The program and duration of the competitions will be fixed by the Executive Committee in agreement with Torino 2025 and the FISU Games ITC. In principle, the competitions will last 12 days maximum and will include:

Men	Women
10-team tournament	8-team tournament

Each country is authorized to enter a men's team and/or a women's team composed of a minimum of fifteen (15) players and two (2) goalkeepers, and a maximum of twenty (20) players and three (3) goalkeepers.

At the first General Technical Meeting, the Head of Delegation or his/her representative shall confirm and sign the official list of competitors.

Once the Head of Delegation/coach signs the list (roster) of players and goalkeepers, no change (replacements or additions) is permitted.

Only with an accreditation card approved by the FISU International Control Committee (CIC) can an athlete be considered for the roster and be entitled to participate in any of the games.

No player or team official under a current suspension from FISU, IIHF or the National Federation of his/her country may take part in the tournament.

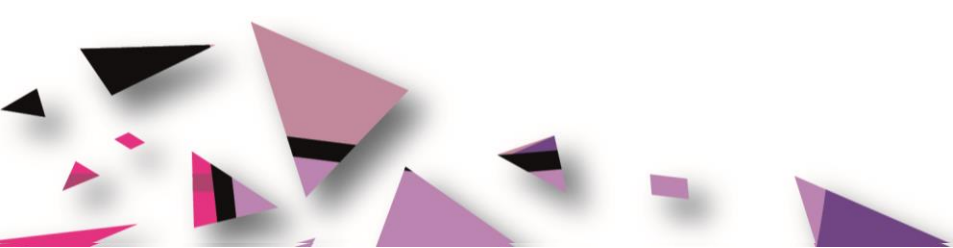
On ice officiating system: "Four-man officiating system" (two referees and two linesperson). FISU Technical Committee Chairs may, at their sole discretion, apply the one-referee and two-linesperson system for games in the round robin.

5.4.1 ENTRIES

Men

Ten (10) countries have qualified to enter teams and participate in accordance with FISU Torino 2025 Regulations. Teams have been placed in two (2) groups based on FISU ranking and continental representation.

GROUP A	GROUP B
Canada	Slovakia
Kazakhstan	United States of America
Czechia	Ukraine
Republic of Korea	Japan
Sweden	Poland



Women

Eight countries have qualified to enter teams and participate in accordance with FISU Torino 2025 Regulations. Teams have been placed in two (2) groups based on FISU ranking and continental representation.

GROUP A	GROUP B
Canada	Japan
Slovakia	Czechia
United Kingdom of Great Britain and Northern Ireland	United States of America
Chinese Taipei	Kazakhstan

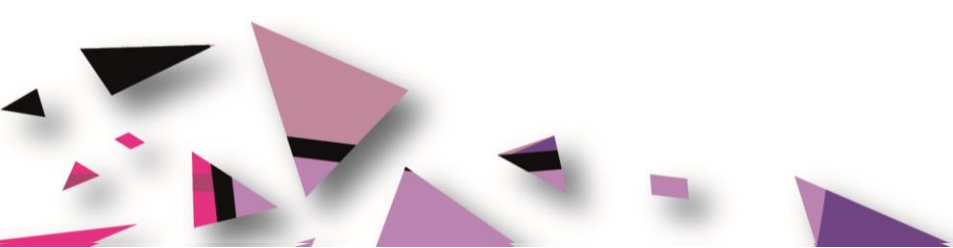
5.4.2 PROTEST AND APPEAL

- Any protest of a sport or disciplinary nature must reach the Jury or other proper authority according to the regulations laid down by the IIHF. Such protest must be accompanied by a deposit, the amount of which is set in line with the IF regulations, if not otherwise specified in the technical regulations of concerned sport.
- Each Head of Delegation or his/her deputies are authorized to lodge an appeal against the decision of the Jury. This appeal must be submitted in writing to the Jury of Appeal or proper authority in accordance with the IIHF regulations.
- Any sport disciplinary situation which cannot be satisfactorily resolved by the Sport Technical Committee (TC) and the sport specific disciplinary regulations will be reported to the FISU Disciplinary Committee for further action to be taken. Where appropriate, a report will be sent to IIHF.

5.5 Competition Format

5.5.1 NUMBER OF PLAYERS ON THE LINE-UP SHEET

- 60 minutes before the start of the game, a representative from each team must provide the scorekeeper with a line-up (list of names and corresponding jersey numbers for the players dressing), including the names of the captain(s) and alternate captain(s).
- Each team is allowed to dress a maximum of 20 skaters and 2 goaltenders for a game.
- Only eligible players are allowed to be listed on the line-up sheet and play in the game.
- If, during the course of a game, both goaltenders from a team are unable to play, the team will be allowed to dress a skater from the players' bench to play as a goaltender.
- The skater has 10 minutes to dress and be ready to play, but if he/she is ready before the 10-minute mark, he/she is allowed to use the remaining time for an on-ice warmup.
- With the exception of a third (3rd) goaltender, no alterations to the line-up are allowed once the game has started.



5.5.2 TOURNAMENT FORMAT

MEN

The format of the Men's Tournament comprises:

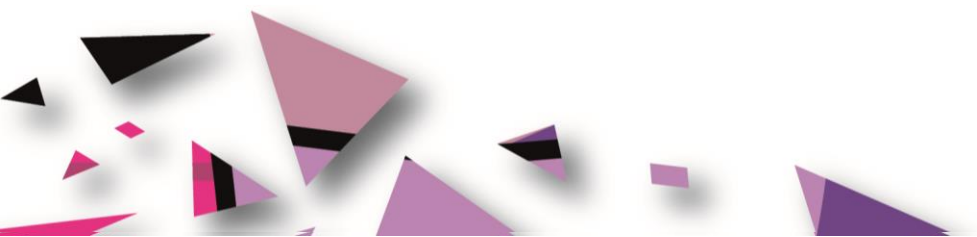
- PRELIMINARY ROUND played in two groups (A and B), from which 4 teams each will qualify to the quarter-finals.
- QUARTER-FINAL ROUND (4 games)
- SEMI-FINAL ROUND (2 games)
- MEDAL ROUND (2 games) – Bronze Medal Game and Gold Medal Game
- During the PRELIMINARY ROUND the teams will play a Round Robin. The four (4) highest-ranking teams from each group will qualify for the QUARTER-FINALS. The last team of each group will play a game for the ranking between 9th and 10th.
 - The QUARTER-FINAL ROUND will be played as follows:
 - QF1: 1st place Group A vs. 4th place Group B
 - QF2: 2nd place Group A vs. 3rd place Group B
 - QF3: 1st place Group B vs. 4th place Group A
 - QF4: 2nd place Group B vs. 3rd place Group A
 - The 4 winning teams will play in the semi-finals. The 4 losing teams will play the ranking games between 5th and 8th.
- The SEMIFINAL ROUND will be played as follows:
 - For the semi-finals, following the IIHF format, a ranking is made with the qualified teams following those criteria:
 1. Higher position in the group
 2. Higher number of points
 3. Better goal difference
 4. Higher number of goals scored for
 5. Better seeding number
 - The teams will play as follows:
 - 1st place vs. 4th place
 - 2nd place vs. 3rd place
 - The two (2) winning teams will play in the Gold Medal Game and the two (2) losing teams will play in the Bronze Medal Game.

A game consists of three periods of 20 minutes (with two intermissions above 15 minutes, if not otherwise decided in the directorate) plus overtime and a penalty-shot shootout if required.

WOMEN

The format of the Women's Tournament comprises:

- PRELIMINARY ROUND played in two groups (A and B), from which two teams each qualify directly to the semi-finals



- Ranking games: the two (2) teams eliminated from each group will play a game to define its final ranking.
- SEMIFINAL ROUND (two (2) games)
- MEDAL ROUND (two (2) games) – Bronze Medal Game and Gold Medal Game.
- During the PRELIMINARY ROUND the teams will play a Round Robin. The two (2) highest-ranking teams from each group will qualify for the SEMIFINALS. The SEMIFINAL ROUND will be played as follows:
 - 1st place Group A vs. 2nd place Group B
 - 2nd place Group A vs. 1st place Group B
 - The two (2) winning teams will play in the Gold Medal Game and the two (2) losing teams will play in the Bronze Medal Game.

A game consists of three periods of 20 minutes (with two intermissions above 15 minutes, if not otherwise decided in the directorate) plus overtime and a penalty-shot shootout if required.

5.5.3 THREE-POINT SYSTEM (2024 IIHF SPORT REGULATIONS)

For all games, points shall be awarded as follows:

- 3 points for the winning team at the conclusion of regulation time.
- 1 point for both teams at the conclusion of regulation time if the game is tied.
- An additional point earned for the team that wins the game in a 5-minute overtime period, or the penalty-shot shootout if the teams are still tied following conclusion of the overtime period.
- 0 points for the team losing the game at the conclusion of regulation time.

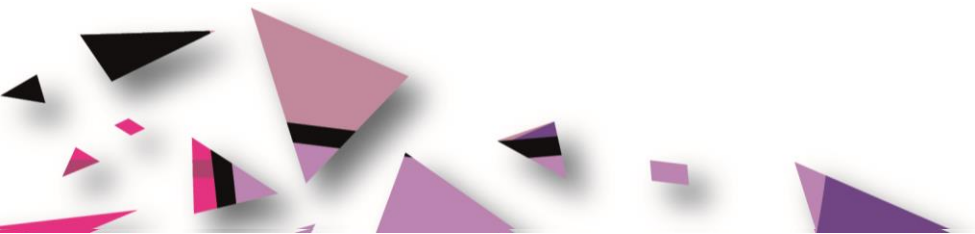
5.5.4 TIE BREAKING FORMULA (2024 IIHF SPORT REGULATIONS)

The tie-breaking system for two (2) teams with the same number of points in a standing will be the game between the two (2) teams, the winner of the game taking precedence.

Due to the fact that the three (3)-point system does not allow a game to end in a tie, then the following tie breaking procedure is applicable when three (3) or more teams are tied in points in a championship standing.

Should three (3) or more teams be tied in points, then a tie breaking formula will be applied as follows: creating a sub-group amongst the tied teams. This process will continue until only two (2) or none of the teams remain tied. In the event of two (2) remaining tied teams, the game between the teams would then be the determining tiebreaker, as the game could not end as a tie. In the case of none of the teams be tied, the criteria specified in the respective step applies.

FISU special regulations: in any event when the goal difference will be decisive, only a 10-goal difference per game will be taken into account.



Step 1: Taking into consideration the games between each of the tied teams, a sub-group is created applying the points awarded in the direct games amongst the tied teams from which the teams are then ranked accordingly.

Step 2: Should three (3) or more teams still remain tied in points then the better goal difference in the direct games amongst the tied teams will be decisive.

Step 3: Should three (3) or more teams still remain tied in points and goal difference then the highest number of goals scored by these teams in their direct games will be decisive.

Step 4: Should three (3) or more teams still remain tied in points, goal difference and goals scored then the results between each of the three teams and the closest best-ranked team outside the sub-group will be applied. In this case the tied team with the best result (1. points, 2. goal difference, 3. more goals scored) against the closest best ranked-team will take precedence.

Step 5: Should the teams still remain tied, then the results between each of the three (3) teams and the next highest best-ranked team outside the sub-group will be applied.

Step 6: Should the teams still remain tied after these five (5) steps have been exercised then Sport considerations will be applied, and the teams will be ranked by their positions coming into the Championship (seeding).

The IIHF Tie Breaking Formula will be used to resolve ties before the end of the Preliminary Round.

In the event where two (2) teams are tied and they have not yet played against each other, and in the event where three (3) or more teams are tied and not all mutual games have been played within the sub-group, the following criteria will be used to break the tie:

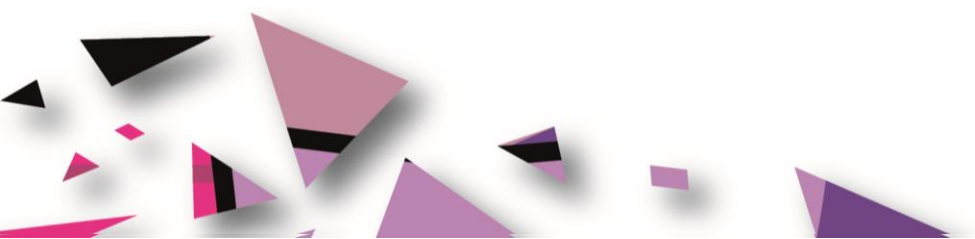
1. Fewest number of games played
2. Highest goal differential (GF-GA) in all games
3. Highest number of goals for (GF) in all games
4. Highest tournament seeding entering the tournament

In the event of three (3) or more tied teams, this process will continue until only two (2) teams remain tied. The game between the two (2) remaining tied teams would then be the determining tiebreaker. If the two (2) remaining tied teams have not played each other, the tie break will be determined by re-starting the process only for these two (2) teams.

5.5.5 OVERTIME OPERATIONS (2024 IIHF SPORT REGULATIONS)

Overtime – Operations for a Round Robin or for a Preliminary Round Game

If at the end of the three (3) regular twenty (20) minutes periods in a single Round Robin championship or the Preliminary Round of a top category championship and the two playing teams are tied, the teams will then play a 'sudden death' overtime period of not more than five



(5) minutes with the team scoring first declared the winner. The overtime period shall be played with each team at a numerical strength of three (3) skaters and one (1) Goalkeeper.

The overtime period will commence following a three-minute intermission during which time a shoveling of the ice surface by arena personnel will be performed utilizing the same procedure as during television time-outs. Once the intermission has been completed, the clock will be reset to 5:00 minutes and the overtime period will begin immediately. Teams will not change ends.

The players will remain at their respective player benches during the 3-minute intermission in which the shoveling of the ice surface takes place.

Goalkeepers must go to their respective players' benches during this rest period, however, penalized players must remain on the penalty bench. Should a penalized player exit the penalty bench, he shall be returned immediately by the game officials with no additional penalty being assessed, unless he commits an infraction of any other rule. Teams are not permitted to return to the dressing room during this time.

Penalties

When regulation time ends, and the teams are 5 on 3, teams will start the overtime period with 5 on 3. Once player strength reaches 5 on 4 or 5 on 5, at the next stoppage of play, player strength is adjusted to 4 on 3 or 3 on 3, as appropriate.

When regulation time ends, and teams are 4 on 4 teams will start overtime 3 on 3. Once player strength reaches 4 on 4, at the next stoppage player strength is adjusted to 3 on 3 as appropriate.

If at the end of regulation time teams are 3 on 3, overtime starts 3 on 3. Once player strength reaches 4 on 4, 5 on 4 or 5 on 5, at the next stoppage player strength is adjusted to 3 on 3 or 4 on 3 as appropriate.

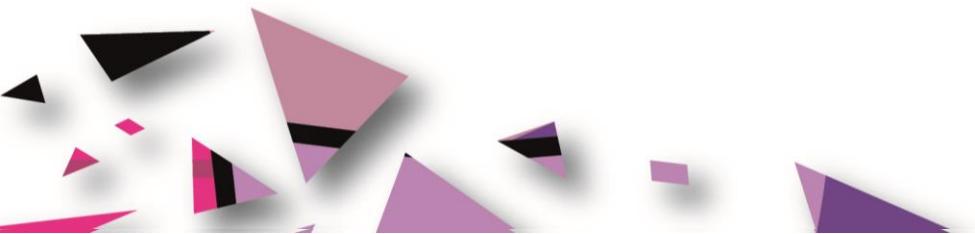
At no time will a team have less than three players on the ice. This may require a fourth and/or fifth skater to be added in the event penalties are assessed.

If a team is penalized in overtime, teams play 4 on 3. If both teams are penalized with minor penalties at the same stoppage of play (with no other penalties in effect), teams will continue to play 3 on 3.

In overtime, if a team is penalized such that a two-man advantage is called for, then the offending team will remain at three (3) skaters while the non-offending team will be permitted five (5) skaters.

At the first stoppage of play after the two-man advantage is no longer in effect, the numerical strength of the teams will revert back to 4 on 3 or 3 on 3, as appropriate.

Overtime – Operations for Semifinals or for the Bronze Medal Game



If at the end of the three (3) regular twenty (20) minutes periods in a Semifinals Game, a Relegation Round Game, a Classification Round Game or in a Bronze Medal Game and the two playing teams are tied, the teams will then play a 'sudden death' overtime period of not more than 10 minutes with the team scoring first declared the winner. The overtime period shall be played with each team at a numerical strength of three (3) skaters and one (1) Goalkeeper.

The overtime period will commence following a three-minute intermission during which time a shoveling of the ice surface will be performed by arena personnel utilizing the same procedure as during television time-outs. Once the intermission has been completed, the clock will be reset to 10:00 minutes and the overtime period will begin immediately. Teams will not change ends.

The players will remain at their respective player benches during the 3-minute intermission in which the shoveling of the ice surface takes place.

Goalkeepers must go to their respective players' benches during this rest period, however, penalized players must remain on the penalty bench. Should a penalized player exit the penalty bench, he shall be returned immediately by the game officials with no additional penalty being assessed, unless he commits an infraction of any other rule. Teams are not permitted to return to the dressing room during this time.

Penalties

When regulation time ends, and the teams are 5 on 3, teams will start the overtime period with 5 on 3. Once player strength reaches 5 on 4 or 5 on 5, at the next stoppage of play, player strength is adjusted to 4 on 3 or 3 on 3, as appropriate.

When regulation time ends, and teams are 4 on 4 teams will start overtime 3 on 3. Once player strength reaches 4 on 4, at the next stoppage player strength is adjusted to 3 on 3 as appropriate.

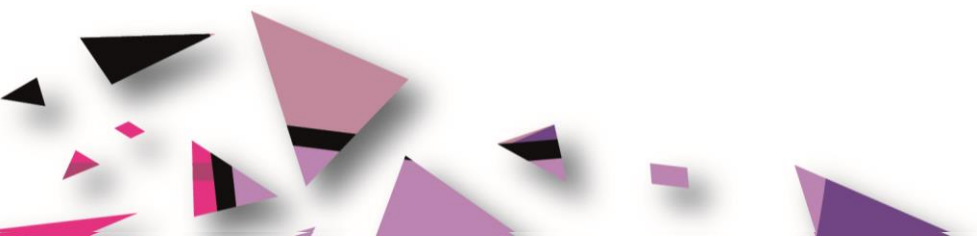
If at the end of regulation time teams are 3 on 3, overtime starts 3 on 3. Once player strength reaches 4 on 4, 5 on 4 or 5 on 5, at the next stoppage player strength is adjusted to 3 on 3 or on 3 as appropriate.

At no time will a team have less than three players on the ice. This may require a fourth and/or fifth skater to be added in the event penalties are assessed.

If a team is penalized in overtime, teams play 4 on 3. If both teams are penalized with minor penalties at the same stoppage of play (with no other penalties in effect), teams will continue to play 3 on 3.

In overtime, if a team is penalized such that a two-man advantage is called for, then the offending team will remain at three (3) skaters while the non-offending team will be permitted five (5) skaters.

At the first stoppage of play after the two-man advantage is no longer in effect, the numerical strength of the teams will revert back to 4 on 3 or 3 on 3, as appropriate.



Overtime – Operations for the Gold Medal Game

If at the end of the three (3) regular twenty (20) minutes periods in a Gold Medal Game of a top category championship and the two playing teams are tied, the teams will then play a 'sudden death' overtime with the team scoring first declared the winner. The overtime period(s) shall be played with each team at a numerical strength of three (3) skaters and one (1) Goalkeeper.

The overtime period will commence following an ice resurfacing during a 15-minute intermission where the teams will return to their dressing room before the start of the overtime period. Teams will not change ends.

If at the end of the first overtime period the two playing teams are still tied, the teams will then continue to play a second overtime period following an ice resurfacing during a 15-minute intermission where the teams will return to their dressing room before the start of the 2nd overtime period. Teams will change ends.

If at the end of the 2nd overtime period the two playing teams are still tied, the teams will then continue to play a third overtime period following an ice resurfacing during a 15-minute intermission where the teams will return to their dressing room before the start of the 3rd overtime period. Teams will change ends.

This procedure will go on until a winner is declared.

Penalties

When regulation time ends, and the teams are 5 on 3, teams will start the overtime period with 5 on 3. Once player strength reaches 5 on 4 or 5 on 5, at the next stoppage of play, player strength is adjusted to 4 on 3 or 3 on 3, as appropriate.

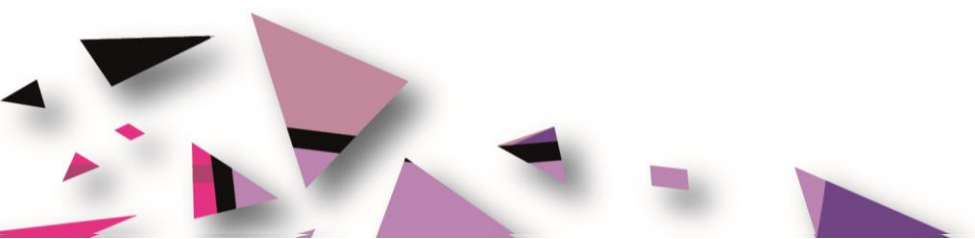
When regulation time ends, and teams are 4 on 4 teams will start overtime 3 on 3. Once player strength reaches 4 on 4, at the next stoppage player strength is adjusted to 3 on 3 as appropriate.

If at the end of regulation time teams are 3 on 3, overtime starts 3 on 3. Once player strength reaches 4 on 4, 5 on 4 or 5 on 5, at the next stoppage player strength is adjusted to 3 on 3 or on 3 as appropriate.

At no time will a team have less than three players on the ice. This may require a fourth and/or fifth skater to be added in the event penalties are assessed.

If a team is penalized in overtime, teams play 4 on 3. If both teams are penalized with minor penalties at the same stoppage of play (with no other penalties in effect), teams will continue to play 3 on 3.

In overtime, if a team is penalized such that a two-man advantage is called for, then the offending team will remain at three (3) skaters while the non-offending team will be permitted five (5) skaters.



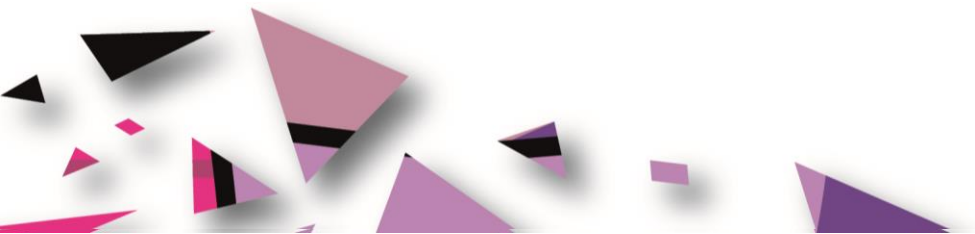
At the first stoppage of play after the two-man advantage is no longer in effect, the numerical strength of the teams will revert back to 4 on 3 or 3 on 3, as appropriate.

5.5.6 PENALTY-SHOT SHOOTOUT PROCEDURE (2024 IIHF SPORT REGULATIONS)

If following the completion of regulation time in any IIHF Championship game and the score of the game is tied, the teams will then play an overtime period with a maximum duration and number of players as specified in the IIHF Sport Regulations with the team scoring first declared the winner.

If no goal is scored in the overtime period, then the IIHF Penalty-Shot Shootout Procedure will apply. The following procedure will be utilized:

1. Shots will be taken at both ends of the ice surface. The 14-meter wide longitudinal center section of the rink, between the Face-Off Spots in the neutral and end zones, will be dry-scraped by the ice-resurfacing machine prior to the Penalty-Shot Shootout during the time required to organize the program accordingly.
2. The procedure will begin with five (5) different shooters from each team taking alternate shots. The players do not need to be named beforehand. Eligible to participate in the Penalty-Shot Shootout will be the four Goalkeepers and all players from both teams listed on the official game sheet except as specified in article 3 below.
3. Any player whose penalty had not been completed when the overtime period ended is not eligible to be one of the players selected to take the shots and must remain in the penalty box or in the dressing room. Also, players serving penalties assessed during the Penalty-Shot Shootout must remain in the penalty box or in the dressing room until the end of the procedure.
4. The Referee will call the two captains to the Referee Crease and flip a coin to determine which team takes the first shot. The winner of the coin toss will have the choice whether his team will shoot first or second.
5. The Goalkeepers shall defend the same goal as in the overtime period and may remain at their goal creases while the opposing team is taking a shot.
6. The Goalkeepers from each team may be changed after each shot.
7. The shots will be taken in accordance with Rule 84.4 – Penalty Shoot-out Procedure of the IIHF Official Rule Book.
8. The players of both teams will take the shots alternately until a decisive goal is scored. The remaining shots will not be taken.
9. If the score is still tied after all shots are taken by each team, the procedure shall continue with a tiebreak shoot-out, using the same or new players. The team that shot second in the first five penalty-shots will start first in the tie-break shots. The game shall be finished as soon as a duel of two players brings the decisive result. The same player can be used for each shot by a team in the tie-break shoot-out.
10. The Official Scorekeeper will record all shots taken, indicating the players, Goalkeepers and goals scored.
11. Only the decisive goal will count in the result of the game. It shall be credited to the team that scored the goal and charged against the team that was scored upon.



12. If a team declines to participate in the Penalty-Shot Shootout, the game will be declared as a loss for that team and the other team will be awarded 3 points for a win. If a player declines to take a shot it will be declared "no score" for his team.

5.6 Competition and Training Venue Information

5.6.1 GENERAL INFORMATION

IHO-M

COORDINATOR IHO W/M		ROBERTO GAY	
OC VENUE MANAGER (TRP)		MASSIMO SALVAI	
OC VENUE MANAGER (PIN)		LAURA MUZZARELLI	
OC VENUE MANAGER (TAZ)		RICCARDO MARETTO	
Venue	Function	Location	Distance from accommodation to venue
Torre Pellice	Training/ Competition (Men)	44.8224882, 7.2038263	xxx
Pinerolo	Training/ Competition (Men)	44.8820103, 7.3040221	xxx
Pala Tazzoli	Training/ Competition	45.032129, 7.6334892	xxx

	(Men)		
--	-------	--	--

IHO-W

COORDINATOR IHO W/M		ROBERTO GAY	
OC VENUE MANAGER (TAZ)		RICCARDO MARETTO	
Venue	Function	Location	Distance from accommodation to venue
Pala Tazzoli	Training/ Competition (Women)	45.032129, 7.6334892	xxx

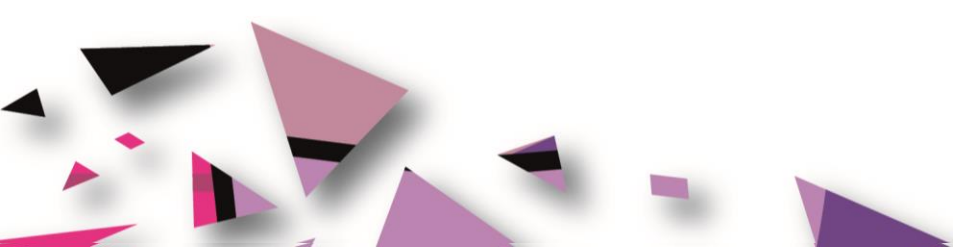
5.6.2 VENUE LAYOUTS

See Appendix, Section 8.2.

5.7 Day-by-Day Schedule

See Appendix, Section 8.1 for the detailed Schedule.

Men Tournament



Start Time	Duration	End Time	Day 3		Day 4		Day 5		Day 6		Day 7		Day 8		Day 9		Day 10				
			Jan 10th		Jan 11th		Jan 12th		Jan 13th		Jan 14th		Jan 15th		Jan 16th		Jan 17th		Jan 18th		
			STO	TSP	STO	TSP	STO	TSP	STO	TSP	STO	TSP	STO	TSP	STO	TSP	STO	TSP	STO	TSP	STO
07:30	00:15	07:45																			
07:45	00:15	08:00																			
08:00	00:15	08:15	Referee Practice	Referee Practice											Referee Warm	Referee Warm	Referee Warm	Referee Warm			
08:30	00:15	08:45	Free Training Spot	Free Training Spot	Referee Warm	Referee Warm									M - 50A Warm	M - 50B Warm	M - 50A Warm	M - 50B Warm	Referee Warm	Referee Warm	
08:45	00:15	09:00			KOR Warm	JPN Warm	KAZ Warm	USA Warm							M - 40B Warm	M - 40A Warm	M - 50B Warm	M - 50A Warm	M - 50B Warm	M - 50A Warm	
09:00	00:15	09:15																			
09:15	00:15	09:30																			
09:30	00:15	09:45	Free Training Spot	Free Training Spot	CAN Warm	SVK Warm	SWE Warm	POL Warm													
09:45	00:15	10:00																			
10:00	00:15	10:15																			
10:15	00:15	10:30																			
10:30	00:15	10:45	Free Training Spot	Free Training Spot	KAZ Training	USA Training	CAN Warm	SVK Warm	SWE Training	POL Training											
10:45	00:15	11:00																			
10:45	00:15	11:00																			
11:00	00:15	11:15																			
11:15	00:15	11:30																			
11:30	00:15	11:45	Free Training Spot	Free Training Spot	CZE Warm	UKR Warm	CAN Warm	SVK Warm	SWE Warm	POL Warm											
11:45	00:15	12:00																			
12:00	00:15	12:15																			
12:15	00:15	12:30																			
12:30	00:15	12:45	Free Training Spot	Free Training Spot	CZE Training	UKR Training	CAN Training	SVK Training	SWE Training	POL Training											
12:45	00:15	13:00																			
13:00	00:15	13:15																			
13:15	00:15	13:30																			
13:30	00:15	13:45																			
13:45	00:15	14:00																			
14:00	00:15	14:15																			
14:15	00:15	14:30																			
14:30	00:15	14:45																			
14:45	00:15	15:00																			
15:00	00:15	15:15																			
15:15	00:15	15:30																			
15:30	00:15	15:45																			
15:45	00:15	16:00																			
16:00	00:15	16:15																			
16:15	00:15	16:30																			
16:30	00:15	16:45																			
16:45	00:15	17:00																			
17:00	00:15	17:15																			
17:15	00:15	17:30																			
17:30	00:15	17:45																			
17:45	00:15	18:00																			
18:00	00:15	18:15																			
18:15	00:15	18:30																			
18:30	00:15	18:45																			
18:45	00:15	19:00																			
19:00	00:15	19:15																			
19:15	00:15	19:30																			
19:30	00:15	19:45																			
19:45	00:15	20:00																			
20:00	00:15	20:15																			
20:15	00:15	20:30																			
20:30	00:15	20:45																			
20:45	00:15	21:00																			
21:00	00:15	21:15																			
21:15	00:15	21:30	CAN - KOR (1)	SVK - JPN (2)	CZE - CAN (3)	UKR - SVK (4)									M - QF 3 2ndA - 3rdB (23)	M - QF 4 2ndB - 3rdA (24)	M - 7/8 PLACE (26)	M - 5/6 PLACE (27)	M - SF2 W122 - W123 (29)	M - GOLD Final 1/2 W124 - W125 (31)	CLOSING CEREMONY PIAZZETTA REALE
21:30	00:15	21:45																			
21:45	00:15	22:00																			
22:00	00:15	22:15																			
22:15	00:15	22:30																			
22:30	00:15	22:45																			
22:45	00:15	23:00																			
23:00	00:15	23:15																			
23:15	00:15	23:30																			
23:30	00:15	23:45																			
23:45	00:15	00:00																			

Women Tournament

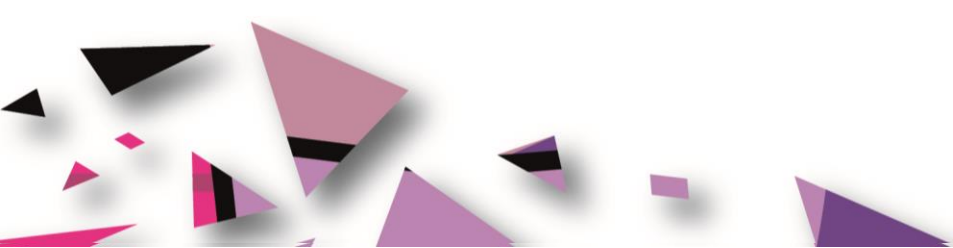


Start Time	Duration	End Time	Day -3	Day -2	Day -1	Day 0	Day +1	Day +2	Day +3	Day +4	Day +5	Day +6	Day +7	Day +10
			Jan 10th	Jan 11th	Jan 12th	Jan 13th	Jan 14th	Jan 15th	Jan 16th	Jan 17th	Jan 18th	Jan 19th	Jan 20th	Jan 23rd
			Fri	Sat	Sun	Mon	Tue	Wed	Thu	Fri	Sat	Sun	Mon	Thu
			TAZ	TAZ	TAZ	TAZ	TAZ	TAZ	TAZ	TAZ	TAZ	TAZ	TAZ	TAZ
			IHO W	IHO W	IHO W	IHO W	IHO W	IHO W	IHO W	IHO W	IHO W	IHO W	IHO W	
07:30	00:15	07:45											Referee Warm	
07:45	00:15	08:00	Referee Practice	Referee Warm	Referee Warm	Referee Warm	Referee Warm	Referee Warm	Referee Warm	Referee Warm	Referee Warm	Referee Warm		
08:00	00:15	08:15												
08:15	00:15	08:30												
08:30	00:15	08:45	Free Training Slot	GBR Warm	USA Warm	Spectators in GAME WARM UP	KAZ Warm	GBR Warm	USA Warm				W LO16 Warm	
08:45	00:15	09:00								W 4thB Warm	W 2nd B Warm	W LO14 Warm		
09:00	00:15	09:15												
09:15	00:15	09:30	Free Training Slot	SVK Warm	CZE Warm		CZE Warm	TPE Warm	KAZ Warm				W LO15 Warm	
09:30	00:15	09:45												
09:45	00:15	10:00	Free Training Slot							W 3rdA Warm	W 1st A Warm	W LO13 Warm		
10:00	00:15	10:15												
10:15	00:15	10:30												
10:30	00:15	10:45	Free Training Slot	TPE Warm	KAZ Warm		JPN Warm	SVK Warm	CZE Warm				W WI 16 Warm	
10:45	00:15	11:00								W 4thA Warm	W 2nd A Warm	W WI 14 Warm		
11:00	00:15	11:15	Free Training Slot	CAN Warm	JPN Warm		USA Warm	CAN Warm	JPN Warm				W WI 15 Warm	
11:15	00:15	11:30								W 3rdB Warm	W 1st B Warm	W WI 13 Warm		
11:30	00:15	11:45	Free Training Slot											
11:45	00:15	12:00												
12:00	00:15	12:15	Free Training Slot	USA Training	TPE Training		GBR Training	USA Training	TPE Training				M WI21	
12:15	00:15	12:30								W 2nd B Training	W LO14 Training	W LO15 Training		
12:30	00:15	12:45	Free Training Slot	CZE Training	SVK Training		TPE Training	KAZ Training	GBR Training					
12:45	00:15	13:00								W 1st A Training	W LO13 Training	W WI 15 Training	M WI22	
13:00	00:15	13:15												
13:15	00:15	13:30												
13:30	00:15	13:45	Free Training Slot	KAZ Training	CAN Training		SVK Training	CZE Training	CAN Training				M WI23	
13:45	00:15	14:00								W 2nd A Training	W WI 14 Training	W LO16 Training		
14:00	00:15	14:15	Free Training Slot											
14:15	00:15	14:30								W 1st B Training	W WI 13 Training	W WI 16 Training		
14:30	00:15	14:45	Free Training Slot	JPN Training	GBR Training		CAN Training	JPN Training	SVK Training				M WI24	
14:45	00:15	15:00												
15:00	00:15	15:15												
15:15	00:15	15:30												
15:30	00:15	15:45	Free Training Slot	Spectators in GAME WARM UP	Spectators in GAME WARM UP		Spectators in GAME WARM UP	Spectators in GAME WARM UP	Spectators in GAME WARM UP	Spectators in GAME WARM UP	Spectators in GAME WARM UP	Spectators in GAME WARM UP	Spectators in GAME WARM UP	
15:45	00:15	16:00												
16:00	00:15	16:15												
16:15	00:15	16:30												
16:30	00:15	16:45												
16:45	00:15	17:00												
17:00	00:15	17:15												
17:15	00:15	17:30												
17:30	00:15	17:45	Directorate W- IHO	SVK - GBR (1)	CZE - USA (3)		CZE - KAZ (7)	TPE - GBR (9)	KAZ - USA (11)					
17:45	00:15	18:00								W - SF1 (5/8 Place) 3rdA - 4thB (13)	W - SF1 (1/4 Place) 1stA - 2thB (15)	W Final 7/8 LO13-LO14 (17)	W BRONZE Final 3/4 LO15-LO16 (19)	
18:00	00:15	18:15												
18:15	00:15	18:30												
18:30	00:15	18:45												
18:45	00:15	19:00												
19:00	00:15	19:15												
19:15	00:15	19:30												
19:30	00:15	19:45												
19:45	00:15	20:00												
20:00	00:15	20:15												
20:15	00:15	20:30												
20:30	00:15	20:45												
20:45	00:15	21:00												
21:00	00:15	21:15												
21:15	00:15	21:30												
21:30	00:15	21:45												
21:45	00:15	22:00												
22:00	00:15	22:15												
22:15	00:15	22:30												
22:30	00:15	22:45												
22:45	00:15	23:00												
23:00	00:15	23:15												
23:15	00:15	23:30												
23:30	00:15	23:45												
23:45	00:15	00:00												

5.7.1 CEREMONIES

Mascot Ceremony and Medal Ceremonies for men and women teams will be held immediately following the conclusion of the competition.

For more information, please refer to section 5.10.



5.7.2 TRAINING

Training Booking Procedure will be shared with the teams in due time. Further details could be included in the updated version.

5.7.3 GENERAL TECHNICAL MEETINGS

The 1st General Technical Meeting (Directorate #1) for Men will be held at 11.00, 10th of January 2025, at Pinerolo

The 1st General Technical Meeting (Directorate #1) for Women will be held at 15:00, 10th of January 2025, at PalaTazzoli.

All team managers must attend this meeting. At the 1st General Technical Meeting, the Head of Delegation or his/her representative shall confirm and sign the official list of players.

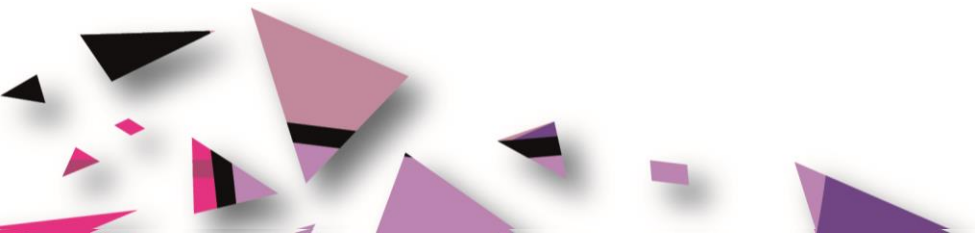
Any further details and clarifications which are not yet described in the Technical Handbook will be communicated at the respective Directorates' Meetings (see schedule in the table above).

5.8 Ice-Hockey Uniforms

Ice Hockey Uniforms

- Each team must have at least two (2) full sets of jerseys and socks (one (1) set in light colors and one (1) set in dark colors, including two (2) extra jerseys for both sets. The basic color must cover, at least, approximately 80% of each item (excluding the player's name and number).
- Each team's players must be dressed uniformly in helmets, jerseys, pants and socks, with the jerseys and socks matching in color; except for the goaltender who may wear a helmet of different design and color to the rest of the team.
- Each player must have his/her surname on the back of the upper part of the jersey in block Latin letters, 10 cm high.
- Each player must have his/her number on the back of his/her jersey, between 25 and 30 cm high, and on the upper part of each sleeve, 10 cm high. Numbers are restricted to 1-99. Players must play with the same number throughout the competition.

Advertising on the uniforms shall follow FISU Ice Hockey Uniform guidelines. Any logo or advertising not following these rules and guidelines must be removed/hidden from the uniforms. The uniform must be controlled by the FISU Winter Games Department and the FISU Marketing Department. Two (2) weeks prior to production – at the latest three (3) months before the event, photos of the front, back and each side (sleeves) of each uniform must be sent to the FISU Winter Games Department (wintergames@fisunet) and the FISU Marketing Department (marketing@fisunet). The photo format needs to be as followed: JPEG file, maximum resolution and size 300dpi/500 KB. During the 1st General Technical Meeting



(GTM), the Organizing Committee and FISU TCC, in coordination with FISU Marketing Department, will conduct a second (2nd) control on site.

5.9 Doping Control

Doping Control will be carried out in accordance with the WADA World Anti-Doping Code and FISU regulations: [Download | Torino 2025 \(wugtorino2025.com\)](https://www.wugtorino2025.com)

5.9.1 LIST OF PROHIBITED SUBSTANCES

The actual list of prohibited substances and methods is defined in accordance with WADA international standards. National University Sports Federations will be responsible for ensuring that their delegations, namely athletes, are made aware of the actual version of the prohibited list. For the current WADA list of prohibited substances and methods, please refer to the following website: www.wada-ama.org.

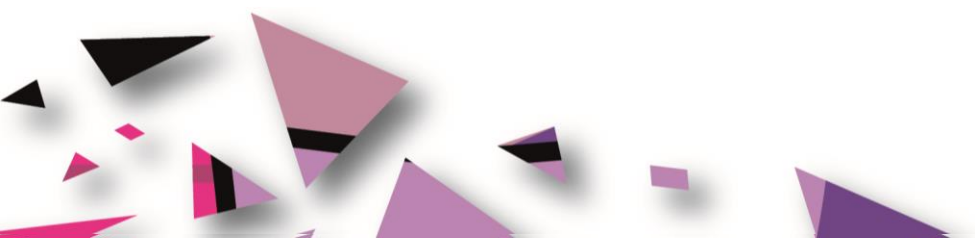
5.9.2 TESTING

The required number of samples will be selected during the “in-competition” and “out-of-competition” periods in accordance with the Test Distribution Plan. “In-competition” is defined as the period commencing 12 hours before a competition in which the athlete is scheduled to participate through to the end of such competition, and the sample collection process related to such competition. “Out-of-competition” is defined as any doping control which is not “in-competition.” During the Torino 2025 FISU Games, athletes can be tested at any time without prior notice. Urine and/or blood samples will be collected in compliance with the WADA International Standard for Testing and Investigations (ISTI). A paperless system will be used for the sample collection. The testing will be conducted by Doping Control Officers (DCO) from the Italian Anti-Doping Agency (NADO), an anti-doping organization accredited by WADA. Testing will be conducted under the supervision of the FISU International Medical Committee. Doping samples will be sent to the WADA-accredited anti-doping laboratory (LAD) in Montreal, Canada. All results will be sent to the Chairman of the FISU International Medical Committee and entered into the ADAMS system. In the event of a violation of FISU Anti-Doping rules, the responsibility of processing the results lies with the FISU International Medical Committee.

In the event of setting a national record, doping testing of the athlete is carried out at the expense of his/her National University Sports Federation.

5.9.3 DOPING CONTROL STATIONS

Doping control stations are located at each sports venue or in close proximity. The main doping control station is located in the Host City of Turin. All doping control stations will be



marked with signs, including signage directing athletes to the stations. After the completion of the doping control procedure, all samples collected at each doping control station will be delivered to the central doping control station together with the necessary support documentation (doping control protocols) for further registration in the ADAMS system. The samples collected at competition venue doping control stations will be transported to the WADA approved laboratory in Italy, in accordance with international standards. All the information concerning the doping control program during the Torino 2025 World University Games is confidential according to WADA and FISU requirements. When visiting a doping control station, athletes are required to have accreditation cards.

Doping control stations for Ice Hockey athletes competing in finals will be located in the PalaTazzoli. There will be a locker room for the processing station, and then a second for the waiting area right across the hall. Doping Control stations will also be at Pinerolo and Torre Pellice.

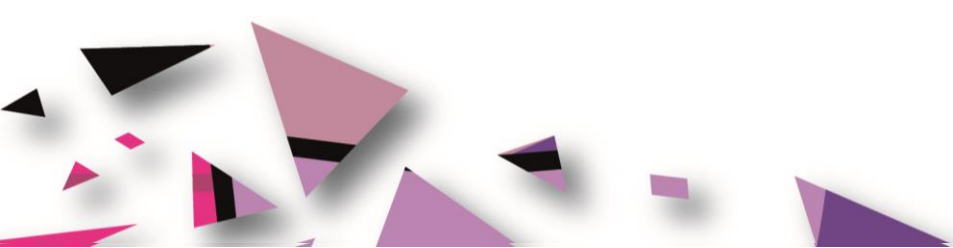
Doping control stations for out of competition controls and outside venue operating hours will be located at medical stations in various locations, being XXX. If testing outside of competition, athletes may be required to test at the medical station nearest them.

5.9.4 THERAPEUTIC USE EXEMPTIONS (TUE)

Torino 2025 FISU World University Games participants who require Therapeutic Use Exemption (TUE) must make an appropriate request to the National Anti-Doping Organization or International Federation before participation in the Torino 2025 FISU Games. The World Anti-Doping Agency International Standard for TUE will be applied in this case. Every athlete who uses a substance or a method included in the list of prohibited substances is obliged to be in possession of a completed TUE form of the established standard from the moment of arrival until the departure from the Accommodation after the Closing Ceremony of the Torino 2025 FISU World University Games.

If there is a need for the use of a prohibited substance or a prohibited method for medical reasons after the Opening Ceremony of the Torino 2025 FISU World University Games, an athlete must submit a request for TUE to the FISU International Medical Committee as a matter of urgency (antidoping@fisu.net). The responsibility for completing the TUE form and submitting an application to the FISU International Medical Committee lies with the delegation physician.

If the delegation does not have its own physician, the athlete shall submit a request for TUE with the attachment of medical documentation confirming the fact of providing him/her with emergency medical treatment to the FISU International Medical Committee (antidoping@fisu.net).



5.9.5 STRUCTURE

Chair of FISU International Medical Committee	Dr. Dusan HAMAR (SVK)
OC Head of Medical Services	Dr. Gianluca GHISELLI (ITA)
OC Head of Doping Control	Dr. Francesco LEONELLI (ITA)

5.10 Mascot and Medal Ceremonies

5.10.1 MASCOT CEREMONY

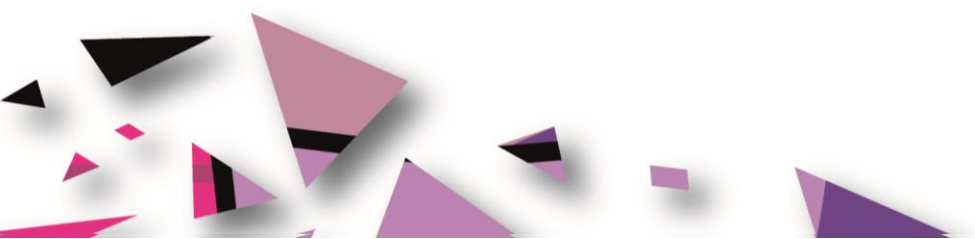
Mascot Ceremonies will be combined with Medal Ceremonies for Ice Hockey.

5.10.2 MEDAL CEREMONY

- The Medal Ceremonies will be held at the venue according to the detailed day-by-day schedule, as shown in Section 5.7.
- The official language for the Medal Ceremony will be English.
- The medalists of each event must attend the Medal Ceremony. In the event that a medalist is unable to attend, the medal will be delivered to an official of the relevant delegation. He/she must be dressed in the delegation's official outfit.
- In the event that all medalists cannot be present, the Medal Ceremony will be postponed.
- If an athlete or team is disqualified, the medal(s) shall be returned to FISU.

During the Medal Ceremony:

- The athletes are not allowed to bring any national flag or any other national, cultural or religious symbol on the podium.
- The national flags of the first three (3) medalists will be raised and the only anthem played will be the FISU Anthem, the Gaudeamus Igitur.
- During the playing of the FISU Anthem and the raising of the flags, athletes shall face the flags and always conduct themselves in a dignified manner. No national anthem is played during the ceremony.
- Athletes are expected to take off their caps and sunglasses when receiving their medal and keep items in hand throughout the ceremony (i.e., playing of the FISU Anthem and raising of the flags).



- Athletes, authorities and accompanying persons are required to face the flags while they are being raised and the FISU Anthem is being played.
- The medalists are expected to attend the ceremony in the uniforms they wore at the Opening Ceremony but are also allowed to attend the official ceremony wearing sport uniforms when the ceremony takes place immediately following the competition.
- After the medals are awarded, athletes must remain in the awarding area for photos on the podium with medals.
- In order to get the best photos, athletes should follow the recommendations of photographers.

5.10.3 DIPLOMA OF HONOR

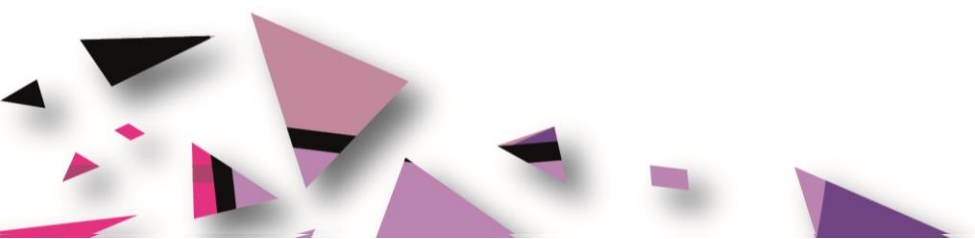
- The athletes ranked one (1) to eight (8) will receive a Diploma of Honor.
- For team events, each team member, from teams ranked one (1) to six (6), will receive a personal Diploma of Honor mentioning his/her name and the team ranking.
- Diplomas of Honor are not distributed at the Medal Ceremony. They are sent in PDF format to the Head of Delegation or an appointed representative of each delegation at the end of the event.

5.10.4 DIPLOMA OF MERIT

- For team sports, to the officials of medalist teams who are mentioned on the match sheet of their respective final game.

5.11 Media Interviews

- Venue Media Centers for media representatives are organized at all Torino 2025 FISU World University Games competition sites.
- At the end of a competition, all athletes must leave the Field of Play through the mixed zone, where brief interviews will be held. Every athlete/coach should be ready to communicate with media representatives upon their request. Team representatives should be prepared to provide athletes with a warm jacket or a blanket prior to entering the mixed zone.
- A volunteer from the Venue Media Center will coordinate the exchanges between athletes/coaches and media.
- Support for translation in English will be provided during the mixed zone interviews. If an athlete/coach does not speak this language, they should invite their team interpreter to the mixed zone.
- Media conferences are held at the beginning and the end of the Torino 2025 FISU World University Games.



5.12 Sport Information Services

5.12.1 ONLINE SPORT INFORMATION SERVICES

Online information will be available on the Torino 2025 FISU World University Games' official website: <https://wugtorino2025.com/>

In addition, more detailed information and publications for teams can be accessed under the following link: <https://wugtorino2025.com/delegation-services/>

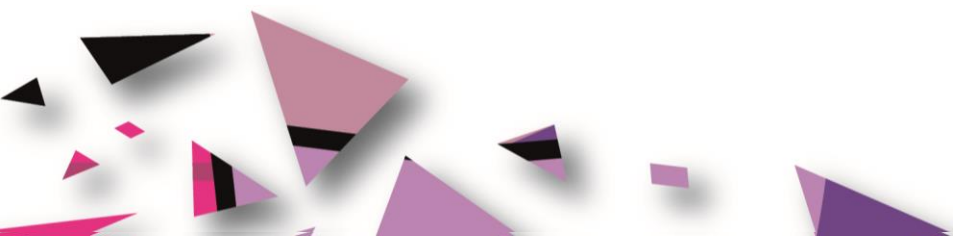
5.12.2 SPORT INFORMATION AT THE VENUE

A Sport Information Desk (SID) will be located at each venue, providing most recent information related to the competitions and receiving requests from the team representative(s).

- The Sport Information Desk will operate from DD Month YYYY until the final day of competition in accordance with the competitions and training schedules (one (1) hour before and after the events).

5.12.3 SPORT INFORMATION DISTRIBUTION

Information	Online	Venue	Delegation Accommodation
Competition Schedule	+	+	+
Start List/ Result List	+	+	+
Change to Schedule	+	+	+
Special Announcements	+	+	+
Weather Information	+	+	+
Medal Table	+		
Technical Handbook	+		
FISU Regulations	+		
Other Information		+	+
Answer to Team Questions		+	+



6. SERVICE INFORMATION

6.1 Team Services

6.1.1 TEAM SERVICE OFFICE

Team Service information can be retrieved from the Sport Information Desk at the venue or at the Service desk located at Knowles Hall.

6.1.2 TEAM SPORT ATTACHÉ

An additional attaché will be assigned to each Ice Hockey team for the entirety of their stay in the Host City. Team sport attachés will work on a flexible schedule, coordinated by the team leader/coach of the team.

Team sport attachés' responsibilities, generally, are as follows:

- Assistance during arrivals and departures of the delegations.
- Assistance with accreditation procedure, Village check-in and check-out procedures.
- Assistance with navigation in the Village and at the Torino 2025 FISU World University Games venues.
- Assistance to the team at competition and training venues, accommodation sites, SIC and Sport Information Desks, the team's daily tasks management and solving any issues that may arise.
- Providing information regarding the competition and training schedule and any changes to the schedule.
- Assistance in ordering transportation for the team.
- Accompany the team to other Torino 2025 FISU World University Games venues or the Host City, on request.
- Language support including unofficial consecutive interpreting.
- Information and communication support attachés are not obliged to follow the instructions of the team members not related to participation in the Torino 2025 FISU Games. The transfer of documents, money and other valuables to attachés is not permitted.

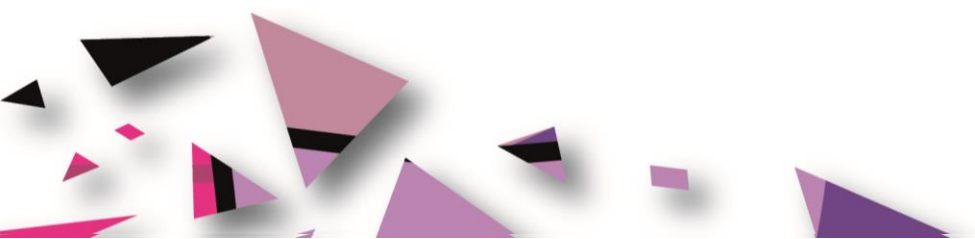
6.1.3 DRESSING ROOMS

Each team will have a permanent dressing room during the tournament and extra coaches rooms. The storage area is located within the team area. Each team will receive lockers for storage reasons. Dressing rooms will be cleaned daily after each practice and game. The key for the room is given to the attaché.

Each team (players and coaches) is asked to bring their own skate guards.

6.1.4 SKATE SHARPENING & EQUIPMENT REPAIR

A sharpening room is available for all teams. Each team is provided with a table for skate



sharpening. Each team must bring its own skate sharpening machine, or, alternatively to share one made available at each venue.

In the event that external skate sharpening or equipment repair is required, please contact the Sport Information Desk and we will organize it for you. Skate sharpening is not allowed in front of the designated dressing room, only in the designated sharpening room.

6.1.5 LAUNDRY SERVICE

- Laundry service is provided by Team Services after each ice session.
- The laundry service only applies to sportswear (underwear, jerseys and socks). The sportswear must be delivered in a personal laundry bag. No laundry bags will be provided for the players, so each Delegation should bring its own.
- The laundry will be picked up by the LOC team service and delivered to and from your dressing room in a laundry trolley/roller container.
- The laundry bags must be brought by yourself and must be coded with the country name/color of the country. Please mark the name of the player on the label of the laundry loop with a waterproof marker. All garments, e.g., underwear, practice jerseys, socks, with the exception of team jerseys, are washed in the laundry bags, which are not opened during the laundry process.
- Do not forget to close the loop carefully. Each team should leave their laundry bags in the same laundry trolley/roll container.

6.1.6 TOWELS

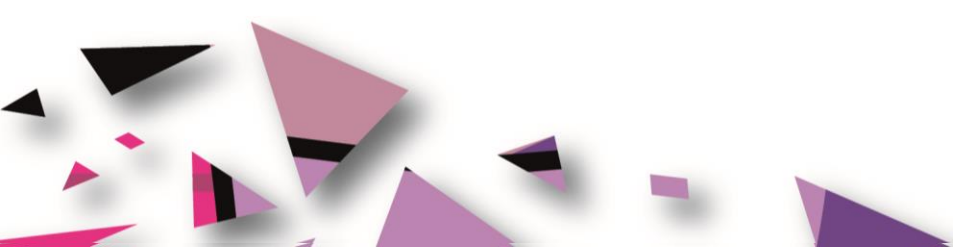
Each team is provided with 30 shower towels and 30 small towels each day.

6.1.7 PENALTY BOX

- Sealed water bottles, paper tissues and ice bags will be available in both penalty boxes during the game.
- Teams are allowed to bring their own drinks to the penalty box.

6.1.8 FITNESS ROOM

Bikes are primarily reserved for the teams preparing for games. The bikes are split between the home and away teams. Teams are not allowed to move the bikes outside the fitness room.



6.1.9 OTHER ARENA SERVICES

- Water: Each team will be provided with enough water. Teams will bring their own drinking bottles to their respective benches. Drinks will be available in the team's dressing room.
- Fruits/Snacks will be available for both practices and games.
- Ice: Ice will be available both in the competition arenas as well as in the Village.

6.1.10 PUCKS

Practice pucks will be at the bench before practices. Teams are kindly advised to collect pucks from the ice after practice and return the pucks to the bench for the next team to practice. Only pucks provided from the OC are allowed to be used on ice.

Game warm-up pucks will be delivered to the team bench before the warm-up. OC staff will collect the pucks from the ice after the warm-up.

6.1.11 ICE PRACTICES - CANCELLATION

If a team is not using the scheduled ice slot for practice, the team attaché or team manager should inform the Sport Information Desk immediately, but no later than **Hh:dd** noon the day before.

6.1.12 OC CONTACT INFO

For any additional service at the arena, please contact the Sport Information Desk.

6.2 Accreditation

Accreditation can be obtained at the Welcome Center (Main Accreditation Center)

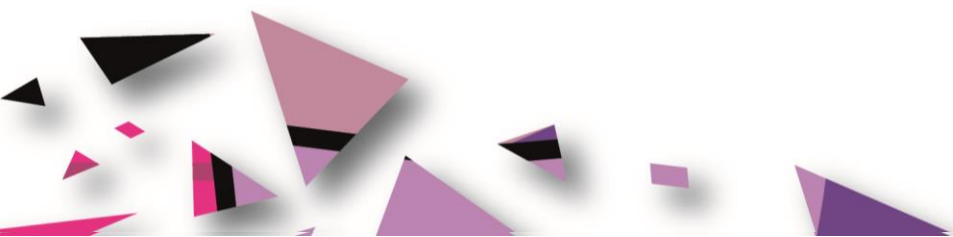
Location: Lingotto, Via Nizza, 230 - 10126 Torino (TO)

Operating Dates: 8 – 23 January 2025

Operating Hours: **hh:mm-hh:mm**

IMPORTANT: A personalized accreditation card with a photo, name and function of the cardholder carries information about the access rights and privileges available to him/her. Upon arrival, the accreditation card, equipped with a QR-code, enables members of delegations a 24-hour temporary access to the Torino 2025 FISU World University Games venues in accordance with the access rights on the accreditation card. The temporary access does not allow participation in the competition.

After the CIC approves the accreditation card, it will be fully activated.



6.3 Radio Frequency Control

At all Torino 2025 FISU World University Games venues, any use of radio frequencies (e.g., walkie-talkies, radio stations, wireless cameras, Wi-Fi access points, wireless microphones, FM-transmitters, and any other wireless equipment) requires a temporary radio license from the Ministry of Economic Development (Ministero dello Sviluppo Economico, MISE) and must ensure it doesn't conflict with the Italian emergency services, including the police, EMTs (Emergency Medical Technicians), and other first responders.

If you are planning to utilize any of the items noted above which require bandwidth on the frequency spectrum, please fill out the Frequency Form (to be provided at a later stage) and send it to technology@wugtorino2025.com.

The Organising Committee will be registering a range of available Radio Frequencies starting from September 2024. We will then provide the frequencies available to each team/country to determine if their existing equipment will work within the range available in the Torino region.

Your wireless devices will be registered and checked by the frequency-organizer. You will receive a confirmation if the devices can be registered in Italy.

By the end of November, you will receive the frequencies allocated to you.

Important: Every frequency user is responsible for submitting registration details for all their wireless devices accordingly and in a timely manner.

Fees/costs (tbc) for temporary radio licenses must be paid to the Organising Committee by the delegation or frequency users applying for an Italian radio license.

6.4 Insurance and Responsibilities

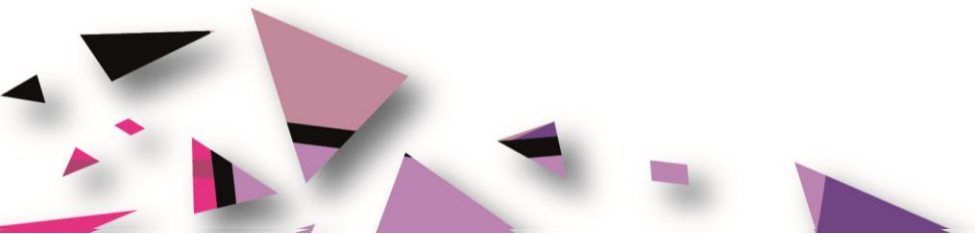
Participating countries must adhere to the insurance requirements and conditions as stipulated in Section 5.6 of the Torino 2025 FISU World University Games Regulations.

6.5 Transportation

6.5.1 TRANSPORTATION SYSTEM FOR ATHLETES AND TEAM OFFICIALS (TA)

Ice Hockey (Men)

The transportation system for athletes and team officials will provide transport services from 9th – 22nd January 2025. Routes in the transportation system for athletes and official delegation members are marked with the abbreviation "TA" (Transport Athletes). Each IHO team will have a dedicated bus which will take them to/from official training sessions and competition only. Vehicles are being equipped with placards indicating route number for the individual and team sports and spectating athletes.



Route Number	TA - XXX
Sport	Ice Hockey (Men)
Route	Accommodation - Pinerolo Olympic Stadium
Distance to the Venue	XX km
Time	XX min

Route Number	TA - XXX
Sport	Ice Hockey (Men)
Route	Accommodation - Cotta Morandini Ice Stadium Torre Pellice
Distance to the Venue	XX km
Time	XX min

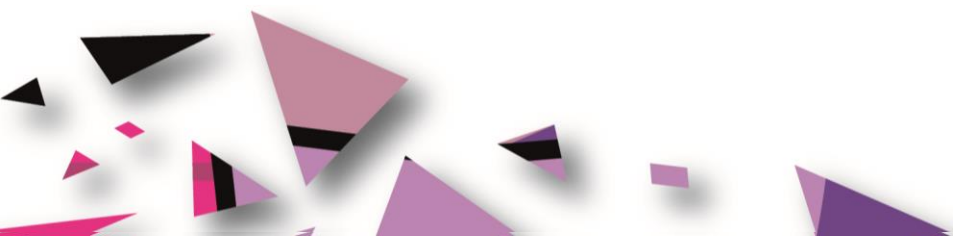
Ice Hockey (Men) teams advancing to the semifinals will be transported from their hotel in Pinerolo to the secondary housing location in Turin. The four men's playoff teams will move to Turin on 20th January. See Appendix 8.2 for more details. Once in Turin, Ice Hockey (Men) teams will have a dedicated bus which will take them to/from official training sessions and competitions only.

Route Number	N/A
Sport	Ice Hockey (Men)
Route	Accommodation - PalaTazzoli
Distance to the Venue	XX km
Time	XX min

Ice Hockey (Women)

The transportation system for athletes and team officials will provide transport services from 9th - 20th January 2025. Routes in the transportation system for athletes and official delegation members are marked with the abbreviation "TA" (Transport Athletes). Each IHO team will have a dedicated bus which will take them to/from official training sessions and competition only. Vehicles are being equipped with placards indicating route number for the individual and team sports and spectating athletes.

Route Number	N/A
Sport	Ice Hockey (Women)



Route	Villa Claretta - PalaTazzoli
Distance to the Venue	9 km
Time	18 min

Route Number	N/A
Sport	Ice Hockey (Women)
Route	Olimpia - PalaTazzoli
Distance to the Venue	11 Km
Time	26 min

6.5.2 TRANSPORTATION SERVICE FOR ALL ACCREDITED STAKEHOLDERS – TRANSPORT CONNECT (TC)

Scheduled buses are provided between **FISU Games Villages** and the competition venues for spectating athletes from 11th – 23rd January 2025. Buses will operate in accordance with the competition schedule. All athletes and officials, regardless of their delegation and sport, will have access to the bus transportation systems TC.

Detailed information will be available in the Transportation Guide.

6.6 Food and Beverages

This information will be included in the next version of the Technical Handbook.

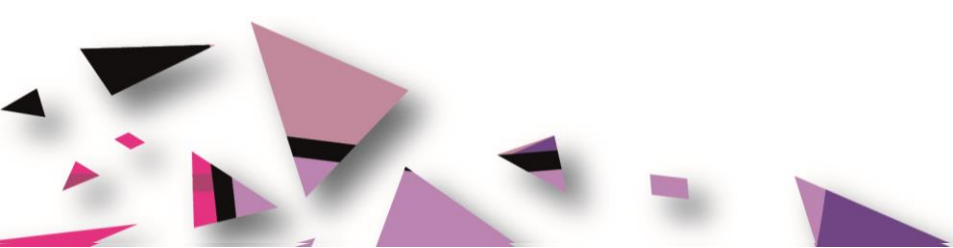
6.6.1 MEALTIMES

The dining hall hours of operations will be adjusted to accommodate Delegation's Competition Schedule for early morning or late-night competitions.

Torino (Villa Claretta/Olimpia)

- Breakfast: 5:30-9:30
- Lunch: 11:00-15:00
- Snack: 16:00-17:00
- Dinner: 18:30-22:30
- Late Snack: 23:00-00:00

Pinerolo (accommodation)



6.6.2 FNB SERVICES AT THE COMPETITION VENUES

- Each teams will be provided with drinks and snacks one (1) hour prior to the competition until one (1) hour following the competition, **outside of their respective locker rooms**. This service is provided from the start of the first official training.

More details will be added soon.

6.7 Medical Services

6.7.1 CONDITIONS OF MEDICAL ASSISTANCE

During the Torino 2025 FISU World University Games, in the event of life-threatening diseases and conditions or in any situations requiring urgent medical treatment, emergency medical assistance is provided to all client groups from 8-25 January 2025. Individuals that intend to arrive earlier or leave later must arrange for their own adequate travel insurance to cover medical costs. Immediate (except for emergency) and planned medical care is provided based on:

Immediate (except for emergency) and planned medical care is provided based on:

- an obligatory medical insurance agreement
- a paid medical service agreement
- a voluntary health insurance agreement
- health insurance

6.7.2 MEDICAL SUPPORT STRUCTURE

- Mobile medical crews in the Field of Play of the competition venues
- Ambulance crews at the competition venues
- Dedicated hospitals and specialized medical facilities
- Medical stations at not competition venues as hotel and villages.

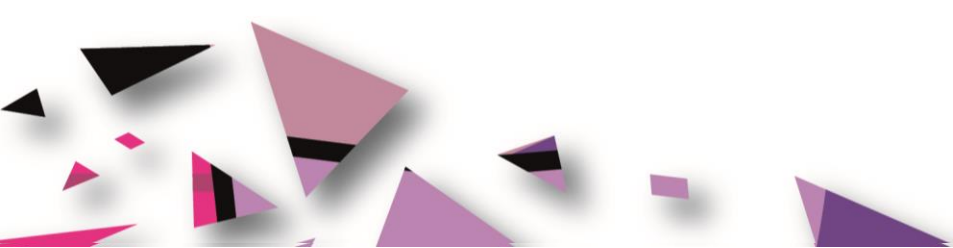
***Please refer to the Medical Services Guide for more details.**

6.7.3 MEDICAL SUPPORT IN THE ACCOMMODATION SITES

Details can be found in the Medical Services Guide. Information to be defined at a later stage.

6.7.4 DEDICATED HOSPITALS AND SPECIALIZED MEDICAL FACILITIES

Additional information and locations of all hospitals in the region will be available in the Medical Service Guide.



6.8 Weather

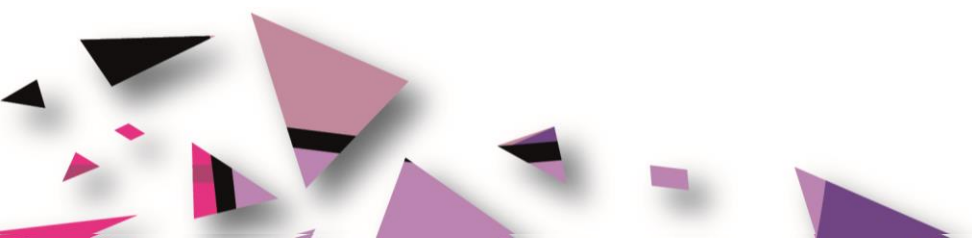
For weather information visit the following link:

https://www.arpa.piemonte.it/rischi_naturali/snippets_arpa/meteo/

Otherwise, weather information can be also picked up at Sport Information Centre at each of the village as well as online and at other locations, including on the Games website.

7. OC CONTACTS

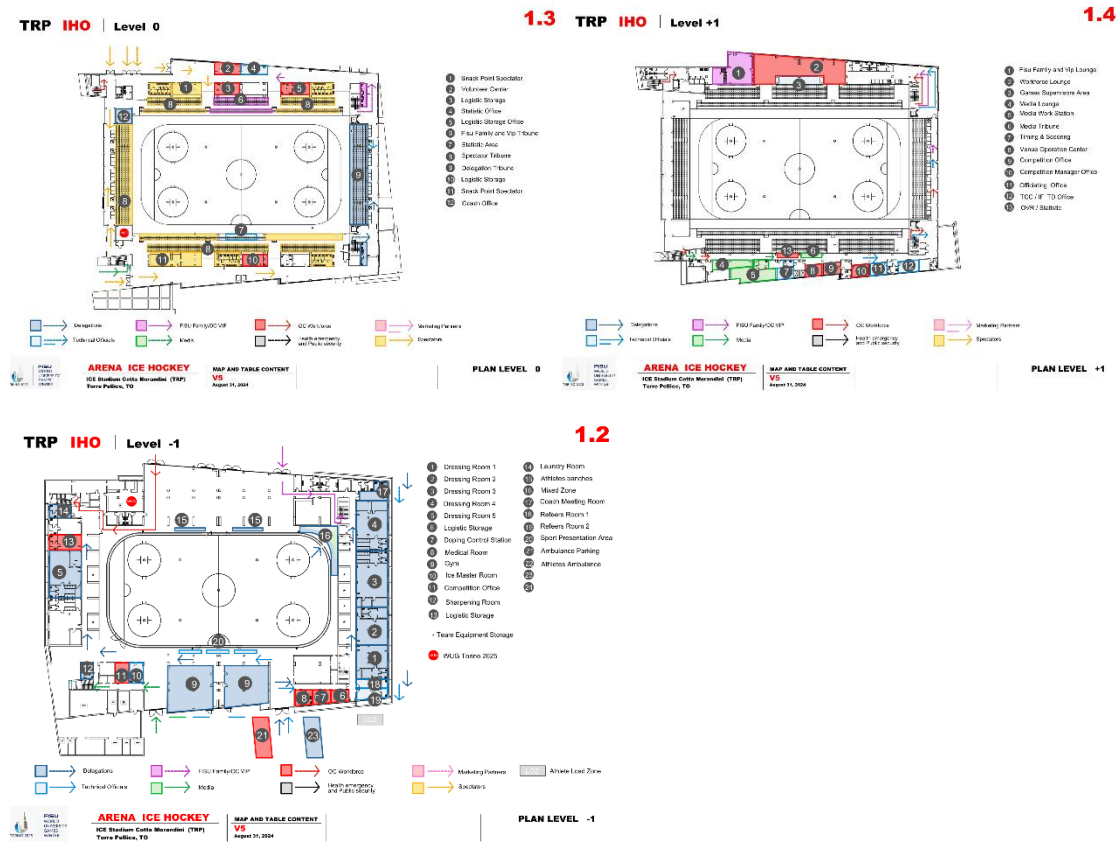
Title	Email
Accreditation	accreditationtorino2025@wugtorino2025.com
Sport Department	sport@wugtorino2025.com
Sport Entries	sportentries@wugtorino2025.com
Delegation Services	delegationservices@wugtorino2025.com
ITO Service Desk	itoservices@wugtorino2025.com



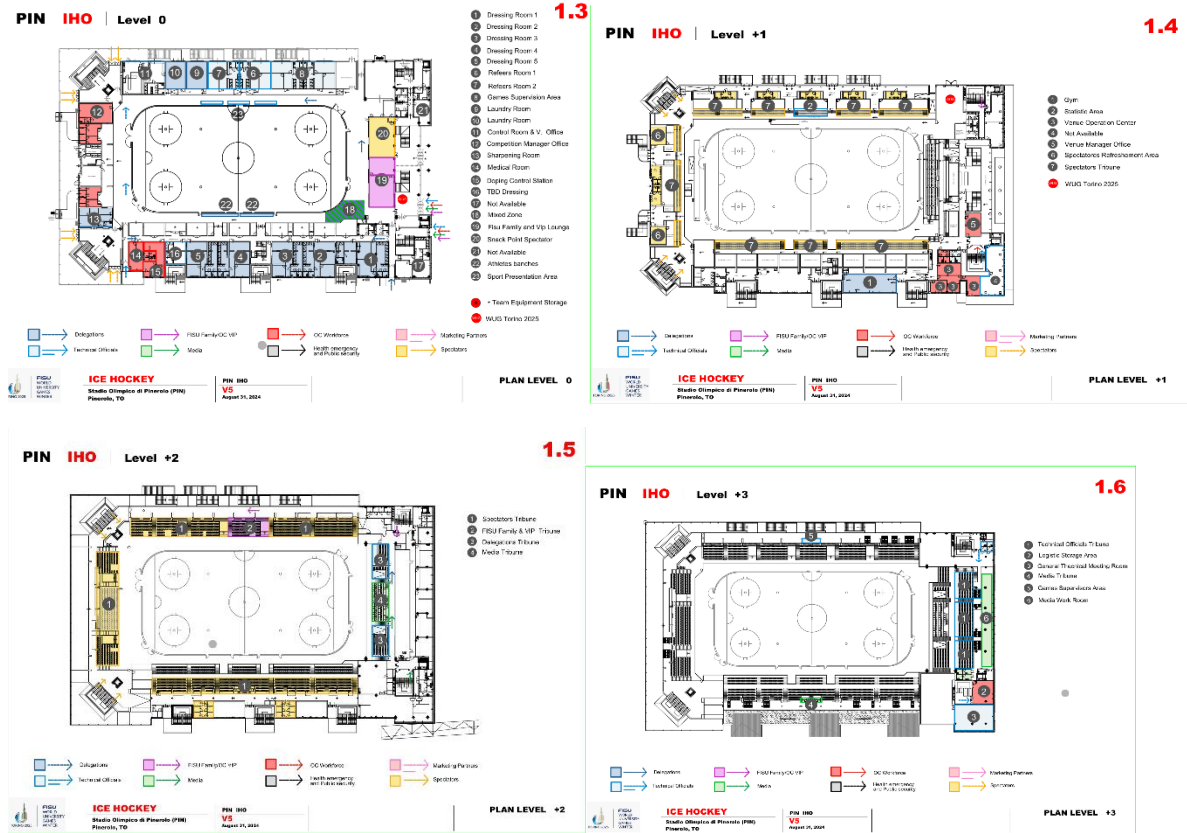
8.2 Playoff Team Transportation Plans

8.3 Venue Layouts

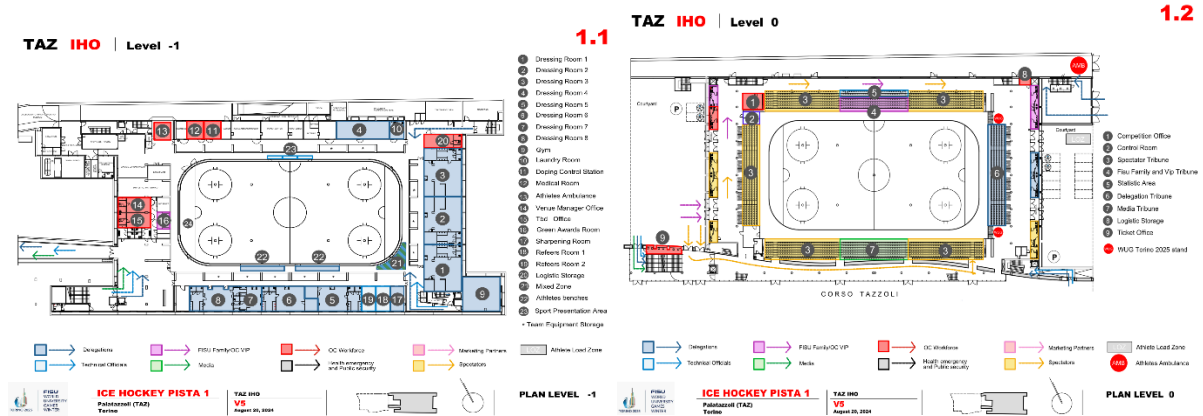
8.3.1 ICE STADIUM "COTTA MORANDINI"- TORRE PELLICE

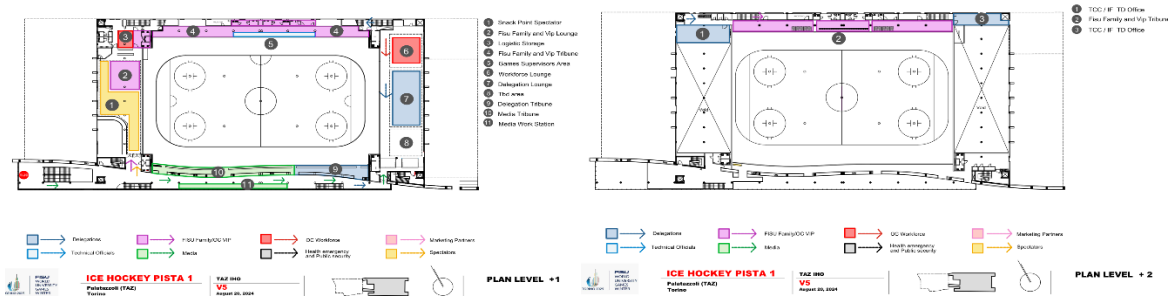


8.3.2 ICE STADIUM “STADIO OLIMPICO” - PINEROLO

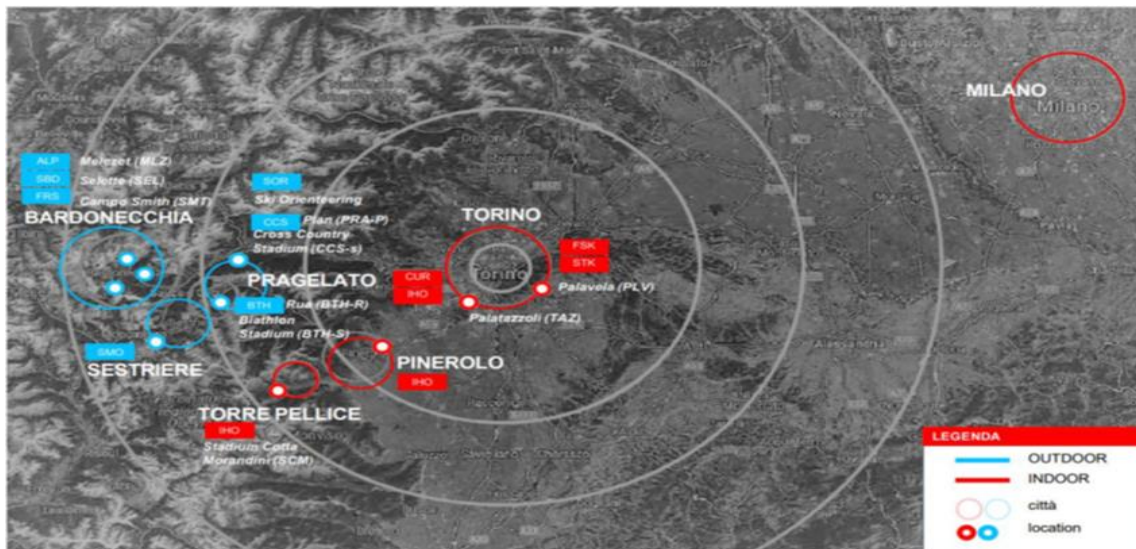


8.3.3 ICE STADIUM “PALATAZZOLI” - TORINO





8.4 Geographical Overview Venues



INSTITUTIONAL PARTNER

Evento organizzato con il supporto di



Ministro per lo Sport e i Giovani



Con il patrocinio di



MAIN SPONSOR



FISU PARTNER



MEDIA PARTNER



OFFICIAL SUPPLIER

