



FISU  
WORLD  
UNIVERSITY  
GAMES  
WINTER



TECHNICAL HANDBOOK

# Snowboard

Version 05/12/2024



**TORINO, ITALY**  
**13 - 23 JANUARY 2025**



## TABLE OF CONTENTS

1. Welcome Messages .....	1
2. Abbreviations .....	3
3. FISU International Technical Committee .....	5
4. General Information .....	5
4.1 Torino 2025 FISU World University Games.....	5
4.2 Competition Schedule.....	5
4.3 Opening and Closing Ceremonies .....	6
5. Competition Information .....	6
5.1 Technical Committee .....	6
5.2 International Technical Officials .....	7
5.3 Competition Structural Chart.....	8
5.4 Technical Regulations .....	8
5.4.1 Entries .....	9
5.4.2 Jury Composition .....	9
5.4.3 Protest and Appeal.....	9
5.5. Competition Format.....	10
5.5.1 Snowboard Cross (SBX) .....	10
5.5.2 Slopestyle (SS) .....	10
5.5.3 Big Air (BA) .....	11
5.5.4 Parallel Giant Slalom (PGS) and Parallel Slalom (PSL).....	11
5.6 Competition and Training Venue Information.....	12
5.6.1 General Information .....	12
5.6.2 Venue Layouts.....	13
5.6.3 Slopes Technical Data .....	13
5.7 Day-by-Day Schedule .....	13
5.7.1 Ceremonies .....	16
5.7.2 Training .....	16
5.7.3 Reserve Day.....	17
5.7.4 General Technical Meeting .....	17
5.8 Equipment.....	17
5.8.1 Competition Uniforms & Equipment .....	17
5.8.2 Storage and waxing rooms.....	17



5.8.3 Waxing Room Equipment .....	18
5.8.4 Fluor Control .....	18
5.9 Doping Control .....	18
5.9.1 List of Prohibited Substances .....	18
5.9.2 Testing.....	18
5.9.3 Doping Control Stations .....	19
5.9.4 Therapeutic Use Exemptions (TUE) .....	19
5.9.5 Structure .....	20
5.10 Mascot and Medal Ceremonies .....	20
5.10.1 Mascot Ceremony .....	20
5.10.2 Medal Ceremony.....	20
5.10.3 Diploma of Honor.....	21
5.11 Media Interviews .....	21
5.12 Sport Information Services .....	22
5.12.1 Online Sport Information Services .....	22
5.12.2 Sport Information at the Venue.....	22
5.12.3 Sport Information Distribution .....	22
6. Service Information.....	23
6.1 Accreditation .....	23
6.2 Radio Frequency Control (To be updated).....	23
6.3 Insurance and Responsibilities.....	24
6.4 Transportation .....	24
6.4.1 Transportation System for Athletes and Team Officials (TA) .....	24
6.4.2 Transportation Service for All Accredited Stakeholders – Transport Connect (TC).....	24
6.5 Food and Beverages.....	25
6.5.1 Mealtimes .....	25
6.5.2 FNB Services at the Competition Venues .....	25
6.6 Medical Services.....	25
6.6.1 Conditions of Medical Assistance .....	25
6.6.2 Medical Support Structure.....	25
6.6.3 Medical Support in the Accommodation Sites .....	26
6.6.4 Dedicated Hospitals and Specialized Medical Facilities.....	26
6.7 Weather .....	26



7. OC Contacts.....	26
8. Appendices.....	27
8.1 Venue Layouts.....	27
8.1.1 Venue Plans.....	27
8.1.2 Overview Slopes.....	27
8.1.3 Venue Layouts.....	29
8.2 Geographical Overview Venues .....	32



## 1. WELCOME MESSAGES

*Dear delegates,*

*Dear friends and colleagues,*

*The 2025 FISU World University Games Winter in Torino, Piemonte (Italy) is drawing inexorably closer. "Torino" is a name that has a unique and incomparable significance for FISU. Not only was FISU founded in this beautiful city in 1949, but Torino also hosted the first ever Summer Universiade ten years later in 1959. Moreover, Primo Nebiolo, FISU President from 1961 to 1999, also contributed to strongly linking Torino and FISU together.*

*Having held the Winter Olympics in 2006, Torino also hosted the Winter Universiade in 2007. Now, we are all preparing to return to the birthplace of both FISU and the Universiade, but also to the mountains in Sestriere, host of the 1966 Winter Universiade and an important cluster for the upcoming Torino 2025 FISU World University Games Winter.*

*I am very grateful to the Organising Committee of the Torino 2025 FISU Games Winter, but also to the political, academic and sport authorities who are making this student sporting highlight - set from 13 to 23 January 2025 - possible. It is thanks to their unwavering commitment and belief in the values of university sport that these FISU Games will take place.*

*I wish you all a smooth and successful preparation for your mission at the Torino 2025 FISU World University Games Winter and look forward to welcoming you to the opening ceremony in Torino on 13 January 2025.*



*Leonz EDER*

*President of the International University Sports Federation*



*Dear Delegates,  
Dear Student-Athletes, Coaches, Dignitaries, and Presidents of Member Federations,  
Dear all,*

*It is a great pleasure for me to present the Technical Handbook for the Torino 2025 FISU World University Games Winter.*

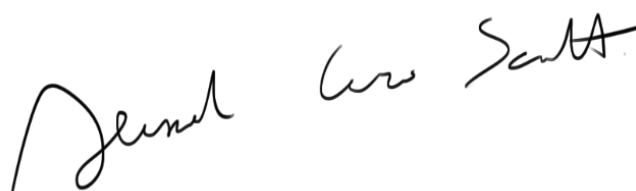
*This handbook contains all the necessary information about the Games and the technical aspects for each sport, serving as a comprehensive guide for all participants and delegations involved.*

*The Torino 2025 FISU World University Games Winter will feature a total of 11 sports, divided into snow and ice disciplines.*

*However, what fills me with particular pride is that, for the first time in the history of the FISU World University Games Winter, we will be hosting two parasports competitions: Para Alpine Skiing and Para Cross-Country Skiing.*

*This event promises the perfect setting for high-level competition across six stunning areas of Piedmont, an Italian region with a rich history in both sports and science: Turin, Sestriere, Bardonecchia, Pragelato, Pinerolo, and Torre Pellice.*

*I am looking forward to welcoming the big family of the Winter University Sports in Piedmont in just a few months' time!*

A handwritten signature in black ink, reading "Alessandro Sciretti". The signature is written in a cursive, flowing style.

*Alessandro Sciretti  
President of Torino 2025 FISU World University Games*



## 2. ABBREVIATIONS

Abbreviation	Name in Full
ADAMS	Anti-Doping Administration and Management System
ATH	Athletes
BA	Big Air
BRD	Bardonecchia
C	Coaches
CIC	FISU International Control Committee
CM	Competition Manager
CMI	FISU International Medical Committee
CT	FISU Technical Committee
DbD	Day-by-Day Schedule
DNF	Did Not Finish
DNQ	Did Not Qualify
DNS	Did Not Start
DSQ	Disqualified
EC	FISU Executive Committee
F	Final
FIS	International Ski and Snowboard Federation
FISI	Italian National Ski Federation
FISU	International University Sports Federation
FNB	Food & Beverage
FoP	Field of Play
GTM	General Technical Meeting
HoD	Head of Delegation
ICR	International Competition Rules
IF	International Federation
IR	International Referee



ITC	FISU International Technical Committee
ITO	International Technical Official
J	Judges
MAC	Main Accreditation Centre
MED	Medical Services
MR	Minimum Requirements
MXZ	Mixed Zone
NADO	National Anti-Doping Organization
NF	National Federation
NTO	National Technical Official
NUSF	National University Sports Federation
OC	Organizing Committee
PGS	Parallel Giant Slalom
PSL	Parallel Slalom
SBD	Snowboard
SBX	Snowboard Cross
SEL	Sellette
SF	Semi-Final
SID	Sports Information Desk
SS	Slopestyle
T&S	Timing and Scoring
TCC	FISU Technical Committee Chair
TCM	Team Captain's Meeting
TD	Technical Delegate
TL	Team Leader
TO	Technical Official
TUE	Therapeutic Use Exemptions
VM	Venue Manager





WADA

World Anti-Doping Agency

### 3. FISU INTERNATIONAL TECHNICAL COMMITTEE

Position	First Name	Last Name	Country
FISU TCC ALP/PARA-ALP	Matjaz	KRANJC	SLO
FISU TCC BTH	Ondrej	RYBAR	CZE
FISU TCC CCS/PARA-CCS	Zofia Stefania	KIELPINSKA	POL
FISU TCC SOR	Zuzana	RYCHLIKOVA	SVK
FISU TCC SMO	Markku	VAUHKONEN	FIN
FISU TCC FRS	Magnus	FERRY	SWE
FISU TCC SBD	Ola	SUNDEKVIST	SWE
FISU TCC CUR	Scott	ARNOLD	CAN
FISU TCC IHO	Reto	BERTOLOTTI	SUI
FISU TCC IHO	Igor	NEMECEK	SVK
FISU TCC FSK	Dingding	LIU	CHN
FISU TCC STK	So Hee	KIM	KOR

### 4. GENERAL INFORMATION

#### 4.1 Torino 2025 FISU World University Games

Date: 13-23 January 2025

Location: Turin, Italy

Sports Program: 11 sports, 96 Medal Events

Venues: 11 venues

#### 4.2 Competition Schedule

<https://wugtorino2025.com/download-3/>



## 4.3 Opening and Closing Ceremonies

### Opening Ceremony

Date: 13 January 2025

Location: Inalpi Arena, Corso Sebastopoli, 123, 10134 Torino TO

Beginning of Ceremony: 19:30

### Closing Ceremony

Date: 23 January 2025

Location: Piazzetta Reale (Torino)

Beginning of Ceremony: 20:00

## 5. COMPETITION INFORMATION

### 5.1 Technical Committee

Technical Committee Chair	Ola SUNDEKVIST (SWE)
FIS Technical Delegates	Fredrik BERGSTROEM (SWE) Lukasz LIGOCKI (POL) Iztok KVAS (SLO)
Competition Managers	Luigi MAUTINO (ITA)
Chief of Competition – SBX	Firstname LASTNAME (CCC)
Chief of Course – SBX	Firstname LASTNAME (CCC)
Chief of Competition – SS & BA	Firstname LASTNAME (CCC)
Chief of Course – SS & BA	Luca SACCO (ITA)
Chief of Competition – PGS & PSL	Firstname LASTNAME (CCC)
Chief of Course – PGS & PSL	Firstname LASTNAME (CCC)



## 5.2 International Technical Officials

Head Judge Snowboard	Filip FISCHER (SWE)
Judge Snowboard	Jackie CARLSON (CAN)
Judge Snowboard	Mario WINKELMANN (GER)
Judge Snowboard	Ivan IVANOV (BUL)
Judge Snowboard	Pavel PAWLUCZUK (POL)
Judge Snowboard	Daniele RICCI (ITA)
Judge Snowboard	Philippe RAMSEYER (SUI)





Parallel Slalom (PSL)	Parallel Slalom (PSL)
-----------------------	-----------------------

#### 5.4.1 ENTRIES

Each country is authorized to enter a maximum number of athletes per event as follows:

- Parallel Giant Slalom: 4 athletes (per gender)
- Parallel Slalom: 4 athletes (per gender)
- Snowboard Cross: 4 athletes (per gender)
- Slopestyle: 4 athletes (per gender)
- Big Air: 4 athletes (per gender)

Only competitors with an active FIS code are allowed to participate in each Snowboard event. Entries are controlled by the Organizing Committee and the FIS Technical Delegate

At the 1st General Technical Meeting, the Head of Delegation or his/her representative shall confirm and sign the official entry list of athletes.

Only with an accreditation card approved by the FISU International Control Committee (CIC) can an athlete be considered for the draw of a starting list and be entitled to participate in any of the competitions.

#### 5.4.2 JURY COMPOSITION

In accordance with the FIS ICR Rules, the Jury will be composed by the following members:

- TD appointed by FIS
- Head Judge (for BA, SS) – appointed by FIS
- Referee (for SBX) – appointed by FIS TD
- Race/Contest Director (FISU Technical Committee Chair appointed by FISU)
- Chief of Competition – appointed by the Organizer

Each Jury member has one vote, with the Chairman having the deciding vote. At the Torino 2025 FISU World University Games, the FISU Technical Committee Chair, as approved by FIS, has a voting right as a member of the Jury for all competitions and will be acting as FIS Race/Contest Director during the events.

#### 5.4.3 PROTEST AND APPEAL

Any protest of a sport or disciplinary nature must reach the Jury according to the regulations laid down by FIS. Such protest must be accompanied by a deposit in cash of CHF 100, or equivalent in the Organizing Committee currency.

This deposit will be returned if the protest is upheld. Each Head of Delegation or his/her deputy is authorized to lodge an appeal against the decision of the Jury.



Any decision of the Jury of Appeal or equivalent authority of a sport is final and must be reported immediately to the Head of Delegation of the concerned country.

Any sport disciplinary situation, which cannot be satisfactorily resolved by the Sport Technical Committee (TC) and the sport specific disciplinary regulations, will be reported to the FISU Disciplinary Committee for further action to be taken. Where appropriate, a report will also be sent to FIS.

## 5.5. Competition Format

### 5.5.1 SNOWBOARD CROSS (SBX)

#### Qualification

- Phase consists of one (1) timed run
- Top 20 to 32 Men and top 20 to 32 Women go further to Double Panel Round Robin.
- Tie breaking in Qualification in accordance with FIS ICR Art. 5501.1.6
- Note: If more than 32 competitors, top 28 will advance directly to final phase, remaining competitors will compete in heats formats for the last four (4) spots in the final phase

#### Finals

- Final phase is conducted as Double Panel Round Robin (FIS ICR Art. 5502.3)
- There will be 20 to 32 competitors seeded into the Group Heats, with two panels based upon the qualification. In each of the panels there will be five (5) Group Heat rounds, where every competitor will compete in each round, against every other competitor of their panel.
- The 4 top scoring competitors from the Round Robin format per panel will qualify for the semi-finals
- The 1st and 2nd ranked competitor in each semi-final will qualify for the Big Final. The 3rd and 4th ranked competitor in each semi-final will qualify for the Small Final.
- Jury can make changes on TCM

### 5.5.2 SLOPESTYLE (SS)

#### Qualification:

- Heat System with one (1) or two (2) heats. Seeded by FIS Art. 3501.1.2
- Two (2) runs/best run counts

#### Finals

- 12 Men/6 Women
- Two runs/best run counts



- Same start orders for final run 1 and final run 2 based on results from qualification
- 6 scoring Judges shall discard the high and low scores and the remaining scores will be counted
- Use TV for Video Judging system

### 5.5.3 BIG AIR (BA)

#### Qualification:

- Heat System with one (1) or two (2) heats. Seeded by FIS ICR Art. 3501.1.2
- Two (2) runs/best run counts

#### Finals

- 12 Men/6 Women
- Two (2) runs/best run counts
- Same start orders for final run 1 and final run 2 based on results from qualification
- Six (6) scoring Judges shall discard the high and low scores and the remaining scores will be counted
- Use TV for Video Judging system

### 5.5.4 PARALLEL GIANT SLALOM (PGS) AND PARALLEL SLALOM (PSL)

#### Qualification Phase

- Qualification phase consists of 2 timed runs: the Qualification run and the Elimination run, for all participants.
- The FIS points list will be used to determine the starting order (see rule “6604 Draw/Start Order” quoted below) for the Qualification run.
- The start order of the Elimination run will be according to rule “6504.1.2 2nd run – Elimination Run”, see further below.
- The final result of the Qualification phase will be the total time of the two runs.
- Tie breaking in Qualification: Refer to rule “6504.1.2 2nd run – Elimination Run” below.
- The top 16 competitors per gender, with a valid time, advance to finals.
- (Unofficial B Plan: During the TCM the Jury can decide to use the Elimination Run format with only top 16 of each colour qualifying from Qualification Run 1 to the Elimination Run)
- (Unofficial C Plan: As B plan, but cut down to top 8 of each course)

#### Finals

- Single Run Knock-out Final Format



- 1/8-finals - 1/4-finals - 1/2 - finals - Small and Big Finals
- Jury can make changes during the TCM

#### Rule “6604 Draw/Start Order”

The most current FIS points list, on the date of the draw, must be used for the seeding of competitors. A competitor who does not appear in the latest valid FIS points list shall be assigned to the group of competitors without points.

- The competitors will be sorted into rank order of the current FIS points list. The first (1st) group will consist of 16 and can be reduced to 10 if there are less than 30 competitors or such other number as determined by the Jury.
- A random draw will take place for the first (1st) group. The remaining competitors will be seeded according to their FIS points list rank. All competitors without points will be drawn last.
- If the competitors are tied, the better rank in the second (2nd) category, FIS points or World Cup Starting List (WCSL), will decide their position. If they are still tied after using the second (2nd) category, their position will be decided by a draw.

#### rule “6504.1.2 2nd run – Elimination Run”

- The start order of the second (2nd) run will be the reverse order of the results of the first (1st) run of each course.
- Competitors will exchange their course (red competitors of first (1st) run will compete on blue course on second (2nd) run and vice-versa)
- The final results after the elimination run will be the total time of the two (2) runs. The top 16 competitors per gender, with a valid time, advance to the final phase.
- If two (2) or more competitors advancing to the final phase, including the last eligible position for the finals (4th, 8th, 16th), are tied after two (2) qualification runs, the ties will be broken by the best run of two (2).
- If they are still tied, the tie will be broken by the seeding position. The competitor with the lower seeding position will receive the higher rank.

## 5.6 Competition and Training Venue Information

### 5.6.1 GENERAL INFORMATION

CLUSTER VENUE MANAGER

DIEGO CHIAVEGATO (ITA)





OC VENUE MANAGER		LUCA SACCO (ITA)	
Venue	Function	Location	Distance from accommodation to venue
Bardonecchia	Training/ Competition	45.0734682, 6.6791318	XXX

#### 5.6.2 VENUE LAYOUTS

See Appendix, Section 8.1

#### 5.6.3 SLOPES TECHNICAL DATA

See Appendix, Section 8.1.2

### 5.7 Day-by-Day Schedule

#### Categories:

Training/Inspection
Competition
Reserve Day
Technical Meeting / Draw
Mascot Ceremony
Medal Ceremony
Social Event

*Some changes may be applied.*

	Sport	Time		Event	Location
9 Jan	SBD	10:00		Venue Inspection Visit	Bardonecchia
10 Jan	SBD	14:00	15:00	1st Team Captain Meeting SBX (GTM)	Palazzo Delle Feste (BRD)
10 Jan	ALL	17:00	19:00	FISU International Technical Committee Meeting (ITC)	FISU Hotel Torino Majestic



11 Jan	SBD	09:15	09:45	Inspection Snowboard Cross	Selette Pista 25
11 Jan	SBD	10:00	12:00	Official Training Snowboard Cross	Selette Pista 25
12 Jan	SBD	09:15	09:45	Inspection Snowboard Cross	Selette Pista 25
12 Jan	SBD	10:00	12:00	Official Training Snowboard Cross	Selette Pista 25
12 Jan	SBD	12:30	13:30	Qualification Run "Seeding Round Robin" SBX	Selette Pista 25
12 Jan	SBD	18:00	19:00	Team Captains Meeting Draw SBX	Palazzo Delle Feste (BRD)
13 Jan	SBD	09:45	10:15	Inspection Snowboard Cross	Selette Pista 25
13 Jan	SBD	10:00	11:00	Official Training Snowboard Cross	Selette Pista 25
13 Jan	SBD	11:30	14:00	"Round Robin" SBX	Selette Pista 25
13 Jan	FRS SBD	14:00	15:00	Team Captains Meeting Slopestyle	Palazzo Delle Feste (BRD)
13 Jan	ALL	19:00		Opening Ceremony	Inalpi Arena (TO)
14 Jan	SBD	08:45	09:15	Inspection Snowboard Cross	Selette Pista 25
14 Jan	SBD	12:15	12:30	Inspection Slopestyle	Selette Pista 25
14 Jan	SBD	13:00	15:00	Official Training Slopestyle	Selette Pista 25
14 Jan	SBD	13:00	14:00	Official Training Snowboard Cross	Selette Pista 25
14 Jan	SBD	14:30	15:00	Final Snowboard Cross	Selette Pista 25
14 Jan	SBD	15:00	15:05	Mascot Ceremony Snowboard Cross	Finish Area Selette Pista 25
14 Jan	SBD	18:40	18:50	Medal Ceremony Snowboard Cross	Medal Plaza Bardonecchia
15 Jan	SBD			Reserve Day	Selette Pista 25



15 Jan	SBD	13:00	15:00	Official Training Slopestyle	Selette Pista 25
15 Jan	FRS- SBD	18:00	19:00	Team Captains Meeting Draw Slopestyle	Palazzo Delle Feste (BRD)
16 Jan	SBD	12:15	12:45	Official Training Slopestyle	Selette Pista 25
16 Jan	SBD	13:00	15:00	Qualifications Slopestyle	Selette Pista 25
17 Jan	SBD	12:15	12:45	Official Training Slopestyle	Selette Pista 25
17 Jan	SBD	13:00	14:30	Finals Slopestyle	Selette Pista 25
17 Jan	SBD	14:30	14:45	Mascot Ceremony Slopestyle	Finish Area Selette Pista 25
17 Jan	SBD	18:20	18:40	Medal Ceremony Slopestyle	Medal Plaza Bardonecchia
17 Jan	FRS SBD	18:00	19:00	Team Captains Meeting Draw Big Air	Palazzo Delle Feste (BRD)
18 Jan	SBD	12:15	12:30	Inspection Big Air	Selette Pista 25
18 Jan	SBD	12:45	13:15	Official Training Big Air	Selette Pista 25
18 Jan	SBD	13:30	15:00	Qualifications Big Air	Selette Pista 25
19 Jan	SBD	12:00	12:45	Official Training Big Air	Selette Pista 25
19 Jan	SBD	13:00	14:30	Finals Big Air	Selette Pista 25
19 Jan	SBD	14:30	14:45	Mascot Ceremony Big Air	Finish Area Selette Pista 25
19 Jan	SBD	18:30	18:50	Medal Ceremony Big Air	Medal Plaza Bardonecchia
19 Jan	SBD	18:00	19:00	Team Captains Meeting PGS & PSL	Palazzo Delle Feste (BRD)
20 Jan	FRS SBD			Reserve Day	Selette Pista 25



20 Jan	SBD	18:00	19:00	Team Captains Meeting Draw Parallel Giant Slalom	Palazzo Delle Feste (BRD)
21 Jan	SBD	09:30	10:30	Qualifications Parallel Giant Slalom	Melezet 23
21 Jan	SBD	14:00	15:30	Finals Parallel Giant Slalom	Melezet 23
21 Jan	SBD	15:30	15:45	Mascot Ceremony Parallel Giant Slalom	Finish Area Melezet 23
21 Jan	SBD	18:00	18:10	Medal Ceremony Parallel Giant Slalom	Medal Plaza Bardonecchia
21 Jan	SBD	18:00	19:00	Team Captains Meeting Draw Parallel Slalom	Palazzo Delle Feste (BRD)
22 Jan	SBD	10:00	11:00	Qualifications Parallel Slalom	Melezet 23
22 Jan	SBD	13:00	14:30	Finals Parallel Slalom	Melezet 23
22 Jan	SBD	14:30	14:45	Mascot Ceremony Parallel Slalom	Finish Area Melezet 23
22 Jan	SBD	18:30	18:40	Medal Ceremony Parallel Slalom	Medal Plaza Bardonecchia
23 Jan	SBD			Reserve Day	Melezet 23
23 Jan	ALL	20:00		Closing Ceremony	Piazzetta Reale (Torino)

### 5.7.1 CEREMONIES

Mascot Ceremonies will be held immediately following the completion of the competition.

Medal Ceremonies for men and women will be held in Bardonecchia at Palazzo delle Feste.

For more information, please refer to Chapter 5.10

### 5.7.2 TRAINING

Official Training at Sellette will take place on 11 January 2025 at 10:00. At the 1st TCM, information will be provided on which delegations can train where and when. Access to the ski area is ensured for the whole time of stay at the Torino 2025 FISU Games.



### **5.7.3 RESERVE DAY**

The OC will do its best to hold all competitions on the scheduled days. However, under exceptional weather conditions, the competitions may have to be postponed/rescheduled/advanced. One reserve day is kept free, 23<sup>th</sup> January 2025. Moreover, for SBX is kept free the 15<sup>th</sup> January 2025 and for SS/BA is kept free the 20<sup>th</sup> January 2025.

### **5.7.4 GENERAL TECHNICAL MEETING**

The 1st General Technical Meeting will be held on 10 January 2025 at 14:00. At the General Technical Meeting, the Head of Delegation or his/her representative shall confirm and sign the official entry list of athletes.

Only athletes with an active FIS code are allowed to participate in each Snowboard event. Entries are controlled by the Organizing Committee and the FIS Technical Delegate. Only with an accreditation card approved by the CIC can an athlete be considered for the draw of a starting list and be entitled to participate in any of the competitions. Any further details and clarifications, which are not yet described in the Technical Handbook will be communicated at the respective General Technical Committee Meetings.

Team Captain's meetings will be held according to the detailed Day-by-Day schedule.

## **5.8 Equipment**

### **5.8.1 COMPETITION UNIFORMS & EQUIPMENT**

Clothing and equipment control will, in principle, follow FIS rules. The equipment control will be carried out in respect to the recent technical FIS regulations if no additional FISU rules are determined. Each competitor is responsible for the equipment that he/she uses (bindings, boots, suit, etc). The term competition equipment encompasses all items of equipment which the competitor uses in competition. This includes clothing as well as apparatus with technical functions. All the competition equipment forms a functional unit. All equipment used by athletes is governed by the FIS Specifications for Competition Equipment.

### **5.8.2 STORAGE AND WAXING ROOMS**

The Torino 2025 FISU World University Games will provide sport equipment storage and waxing rooms for the teams. All facilities are built and organized according to all international requirements. Waxing rooms for Snowboard will be provided in the Athletes' Village.

The rooms will be allocated to the respective nations and shared among their sports.



### 5.8.3 WAXING ROOM EQUIPMENT

For Alpine, Freeski & Freestyle and Snowboard, the OC will provide waxing benches in each waxing area.

Each waxing area (for all relevant sports) will have an ample supply of 220V power, plug-ins and extensions.

The OC will NOT be providing power converters/transformers, waxing irons, vises, etc.

### 5.8.4 FLUOR CONTROL

As stated in FISU Technical Regulation for the Torino 2025 FISU World University Games, the OC will follow the most recent FIS Technical Rules. Full implementation of the fluor wax ban is applied for the Torino 2025 FISU World University Games events. Testing procedure is in the process of development to ensure that all events will be regulated not using fluorine waxes which is mandatory for FIS competitions.

The procedure for testing will be handle by FIS. All athletes and team TO must know that fluor use is officially banned, therefore everyone must behave accordingly.

Testing procedures will be announced during TCM.

## 5.9 Doping Control

Doping Control will be carried out in accordance with the WADA World Anti-Doping Code and FISU regulations: <https://wugtorino2025.com/download-3/>

### 5.9.1 LIST OF PROHIBITED SUBSTANCES

The actual list of prohibited substances and methods is defined in accordance with WADA international standards. National University Sports Federations will be responsible for ensuring that their delegations, namely athletes, are made aware of the actual version of the prohibited list. For the current WADA list of prohibited substances and methods, please refer to the following website: [www.wada-ama.org](http://www.wada-ama.org).

### 5.9.2 TESTING

The required number of samples will be selected during the “in-competition” and “out-of-competition” periods in accordance with the Test Distribution Plan. “In-competition” is defined as the period commencing 12 hours before a competition in which the athlete is scheduled to participate through to the end of such competition and the sample collection process related to such competition. “Out-of-competition” is defined as any doping control which is not “in-competition”. During the Torino 2025 FISU World University Games, athletes can be tested at



any time without prior notice. Urine and/or blood samples will be collected in compliance with the WADA International Standard for Testing and Investigations (ISTI). A paperless system will be used for the sample collection. The testing will be conducted by Doping Control Officers (DCO) from an anti-doping organization accredited by WADA. Testing will be conducted under the supervision of the FISU International Medical Committee. The samples collected at competition venue doping control stations will be transported to the WADA approved laboratory in Italy. All results will be sent to the Chairman of the FISU International Medical Committee and entered into the ADAMS system. In the event of a violation of FISU Anti-Doping Rules, the responsibility for processing the results lies with the FISU International Medical Committee.

In the event of setting a national record, doping testing of the athlete is carried out at the expense of his/her National University Sports Federation.

### **5.9.3 DOPING CONTROL STATIONS**

Doping control stations are located at each sports venue or in close proximity. The main doping control station is located in the Athletes' Village. All doping control stations will be marked with signs, including signage directing athletes to the stations. After the completion of the doping control procedure, all samples collected at each doping control station will be delivered to the central doping control station together with the necessary support documentation (doping control protocols) for further registration in the ADAMS system. All samples will be packaged and sent to the WADA accredited anti-doping laboratory in accordance with international standards. All the information concerning the doping control program during the Torino 2025 FISU World University Games is confidential according to WADA and FISU requirements. When visiting a doping control station, athletes are required to have accreditation cards.

The doping control station for Snowboard athletes will be located at the Venue

- Doping control stations for out of competition controls and outside venue operating hours will be in a dedicated place in the Athlete's Village. If testing outside of competition, athletes may be required to test at the medical station nearest them.

### **5.9.4 THERAPEUTIC USE EXEMPTIONS (TUE)**

Torino FISU World University Games participants who require Therapeutic Use Exemption (TUE) must make an appropriate request to the National Anti-Doping Organization or International Federation before participation in the Torino 2025 FISU Games. The World Anti-Doping Agency International Standard for TUE will be applied in this case. Every athlete who uses a substance or a method included in the list of prohibited substances is obliged to be in possession of a completed TUE form of the established standard from the moment of arrival until the departure from the Village after the Closing Ceremony of the Torino 2025 FISU World University Games.

If there is a need for the use of a prohibited substance or a prohibited method for medical reasons after the Opening Ceremony of the Torino 2025 FISU World University Games, an



athlete must submit a request for TUE to the FISU International Medical Committee as a matter of urgency (antidoping@fisu.net). The responsibility for completing the TUE form and submitting an application to the FISU International Medical Committee lies with the delegation physician.

If the delegation does not have its own physician, the athlete shall submit a request for TUE with the attachment of medical documentation confirming the fact of providing him/her with emergency medical treatment to the FISU International Medical Committee (antidoping@fisu.net).

#### 5.9.5 STRUCTURE

Chair of FISU International Medical Committee	<b>Dr. Dusan HAMAR (SVK)</b>
OC Head of Medical Services	<b>Dr. Gianluca GHISELLI (ITA)</b>
OC Head of Doping Control	<b>Dr. Francesco LEONELLI (ITA)</b>

## 5.10 Mascot and Medal Ceremonies

### 5.10.1 MASCOT CEREMONY

Mascot Ceremonies will take place following the completion of each competition in the immediate vicinity of the Field of Play.

The Mascot will be handed to the winners right after the confirmation of the final results. They will be asked to pose with the Mascots in hand for the Winners Picture in front of the V-board in the finish area.

The winners will be announced by the sport Presentation Speaker and the Media will be invited to take the picture or the video of the Winners

### 5.10.2 MEDAL CEREMONY

The Medal Ceremonies will be held at the Bardonecchia Medal Plaza, Piazza Alcide de Gasperi, according to the detailed day-by-day schedule as shown in section 5.7.

The official language for the Medal Ceremony will be English.

The medalists of each event must attend the Medal Ceremony. In the event that a medalist is unable to attend, the medal is delivered to an official of the relevant delegation. He/she must be dressed in the delegation's official outfit. He/she must not mount the podium but stand





behind it. The awarders will hand the medal and mascot over the podium. During the FISU Anthem, the delegation official stands behind the podium. In the event that all medalists cannot be present, the Medal Ceremony will be postponed. If an athlete or team is disqualified, the medal(s) shall be returned to FISU.

#### **During the Medal Ceremony:**

- The athletes are not allowed to bring any national flag or any other national, cultural or religious symbol on the podium.
- The national flags of the first three (3) medalists will be raised and the only anthem played will be the FISU Anthem, the Gaudeamus Igitur.
- During the playing of the FISU Anthem and the raising of the flags, athletes shall face the flags and always conduct themselves in a dignified manner. No national anthem is played during the ceremony.
- Athletes are expected to take off their caps and sunglasses when receiving their medal and keep items in hand throughout the ceremony (i.e., playing of the FISU Anthem and raising of the flags).
- Athletes, authorities and accompanying persons are required to face the flags while they are being raised and the FISU Anthem is being played.
- The medalists are expected to attend the ceremony in the uniforms they wore at the Opening Ceremony but are also allowed to attend the official ceremony wearing sport uniforms when the ceremony takes place immediately following the competition.
- After the medals are awarded, athletes must remain in the awarding area for photos on the podium with medals.
- In order to get the best photos, athletes should follow the recommendations of photographers.

#### **5.10.3 DIPLOMA OF HONOR**

- The athletes ranked one (1) to eight (8) will receive a Diploma of Honor.
- For team events, each team member, from teams ranked one (1) to six (6), will receive a personal Diploma of Honor mentioning his/her name and the team ranking.
- Diplomas of Honor are not distributed at the Medal Ceremony. They are sent in PDF format to the Head of Delegation or an appointed representative of each delegation prior to departure at the end of the event.

### **5.11 Media Interviews**

Venue Media Centers for media representatives are organized at all Torino 2025 FISU World University Games competition sites.

At the end of a competition, all athletes must leave the Field of Play through the mixed zone where brief interviews will be held. Every athlete/coach should be ready to communicate with media representatives upon their request. Team representatives should be prepared to provide athletes with a warm jacket or a blanket prior to entering the mixed zone.



A volunteer from the Venue Media Center will coordinate the exchanges between athletes/coaches and media.

Support for translation in English will be provided during the mixed zone interviews. If an athlete/coach does not speak this language, they should invite their team interpreter to the mixed zone.

Media conferences are held at the beginning and the end of the Torino 2025 FISU World University Games.

## 5.12 Sport Information Services

### 5.12.1 ONLINE SPORT INFORMATION SERVICES

Online information will be available on the Torino 2025 FISU World University Games' official website: <https://wugtorino2025.com>

In addition, more detailed information and publications for teams can be accessed under the following link: <https://wugtorino2025.com/delegation-services>

### 5.12.2 SPORT INFORMATION AT THE VENUE

A Sport Information Desk (SID) will be located at each venue, providing the most recent information related to the competitions and receiving requests from the team representative(s).

- The Sport Information Desk will operate from DD January 2025 until the final day of competition in accordance with the competitions and training schedules (one (1) hour before and after the events).

### 5.12.3 SPORT INFORMATION DISTRIBUTION

Information	Online	Venue	Delegation Accomodation
Competition Schedule	+	+	+
Start List/ Result List	+	+	+
Change to Schedule	+	+	+
Special Announcements	+	+	+
Weather Information	+	+	+
Medal Table	+		
Technical Handbook	+		
FISU Regulations	+		



Other Information		+	+
Answer to Team Questions		+	+

## 6. SERVICE INFORMATION

### 6.1 Accreditation

For the Accreditation procedure please refer to the HoD Manual.

**IMPORTANT:** A personalized accreditation card with a photo, name and function of the cardholder carries information about the access rights and privileges available to him/her. Upon arrival, the accreditation card, equipped with a QR-code, enables members of delegations a 24-hour temporary access to the Torino 2025 FISU World University Games venues in accordance with the access rights on the accreditation card. The temporary access does not allow participation in the competition. After CIC's approval, the accreditation card will be fully activated.

Accredited athletes, coaches and officials for Alpine Skiing, Freestyle & Freeski and Snowboard will receive a ski pass for the venue/area of their respective sport for the duration of their Torino 2025 FISU World University Games accredited period.

### 6.2 Radio Frequency Control (To be updated)

At all Torino 2025 FISU World University Games venues, any use of radio frequencies (e.g., walkie-talkies, radio stations, wireless cameras, Wi-Fi access points, wireless microphones, FM-transmitters, and any other wireless equipment) requires a temporary radio license from the Ministry of Economic Development (Ministero dello Sviluppo Economico, MISE) and must ensure it doesn't conflict with the Italian emergency services, including the police, EMTs (Emergency Medical Technicians), and other first responders.

If you are planning to utilize any of the items noted above which require bandwidth on the frequency spectrum, please fill out the Frequency Form (to be provided at a later stage) and send it to [technology@wugtorino2025.com](mailto:technology@wugtorino2025.com).

The Organising Committee will be registering a range of available Radio Frequencies starting from September 2024. We will then provide the frequencies available to each team/country to determine if their existing equipment will work within the range available in the Torino region.

Your wireless devices will be registered and checked by the frequency-organizer. You will receive a confirmation if the devices can be registered in Italy.



By the end of November, you will receive the frequencies allocated to you.

Important: Every frequency user is responsible for submitting registration details for all their wireless devices accordingly and in a timely manner.

Fees/costs (tbc) for temporary radio licenses must be paid to the Organising Committee by the delegation or frequency users applying for an Italian radio license.

### 6.3 Insurance and Responsibilities

Participating countries must adhere to the insurance requirements and conditions as stipulated in Section 5.6 of the Torino 2025 FISU World University Games Regulations.

Skiing and snowboarding off path:

Any participants skiing or snowboarding off the controlled slopes do so at their own risk. The Torino 2025 FISU World University Games does not accept any liability.

### 6.4 Transportation

#### 6.4.1 TRANSPORTATION SYSTEM FOR ATHLETES AND TEAM OFFICIALS (TA)

The transportation system for athletes and team officials will provide transport services from 11<sup>th</sup> – 23<sup>rd</sup> January 2025. Routes in the transportation system for athletes and official delegation members are marked with the abbreviation “TA” (Transport Athletes). Vehicles are being equipped with placards indicating route number for the individual and team sports and spectating athletes.

Route Number	TA - XXX
Sport	Snowboard
Route	XXX
Distance to the Venue	XX Km
Time	XX min

#### 6.4.2 TRANSPORTATION SERVICE FOR ALL ACCREDITED STAKEHOLDERS – TRANSPORT CONNECT (TC)

Scheduled buses are provided between the XXX with connection service to the competition venues for spectating athletes from 9<sup>th</sup> – 23<sup>rd</sup> January 2025. Buses will operate in accordance with the competition schedule. All athletes and officials, regardless of their delegation and sport, will have access to the bus transportation systems TC.



Detailed information will be available in the Transportation Guide.

## 6.5 Food and Beverages

This information will be included in the next version of the Technical Handbook

### 6.5.1 MEALTIMES

- Breakfast: Hh:mm to Hh:mm
- Lunch: Hh:mm to Hh:mm
- Dinner: Hh:mm to Hh:mm
- Snack: Hh:mm to Hh:mm

### 6.5.2 FNB SERVICES AT THE COMPETITION VENUES

- An athletes' lounge will be providing snacks one (1) hour prior to the competition until one (1) hour after the competition. This service is provided from the start of the first official training.
- On venue meals for athletes will also be provided during competition days.

## 6.6 Medical Services

### 6.6.1 CONDITIONS OF MEDICAL ASSISTANCE

During the Torino 2025 FISU World University Games, in the event of life-threatening diseases and conditions or in any situations requiring urgent medical treatment, emergency medical assistance is provided to all client groups from 8-25 January 2025. Individuals that intend to arrive earlier or leave later must arrange for their own adequate travel insurance to cover medical costs. Immediate (except for emergency) and planned medical care is provided based on:

Immediate (except for emergency) and planned medical care is provided based on:

- an obligatory medical insurance agreement
- a paid medical service agreement
- a voluntary health insurance agreement
- health insurance

### 6.6.2 MEDICAL SUPPORT STRUCTURE

- Mobile medical crews in the Field of Play of the competition venues
- Ambulance crews at the competition venues
- Dedicated hospitals and specialized medical facilities
- Medical stations at not competition venues as hotel and villages.



\*Please refer to the Medical Services Guide for more details.

#### 6.6.3 MEDICAL SUPPORT IN THE ACCOMMODATION SITES

Details can be found in the Medical Services Guide. Information to be defined at a later stage.

#### 6.6.4 DEDICATED HOSPITALS AND SPECIALIZED MEDICAL FACILITIES

Additional information and locations of all hospitals in the region will be available in the Medical Service Guide.

### 6.7 Weather

For weather information visit the following link:

[https://www.arpa.piemonte.it/rischi\\_naturali/snippets\\_arpa/meteo/](https://www.arpa.piemonte.it/rischi_naturali/snippets_arpa/meteo/)

Otherwise, weather information can be also picked up at Sport Information Centre at each of the village as well as online and at other locations, including on the Games website.

## 7. OC CONTACTS

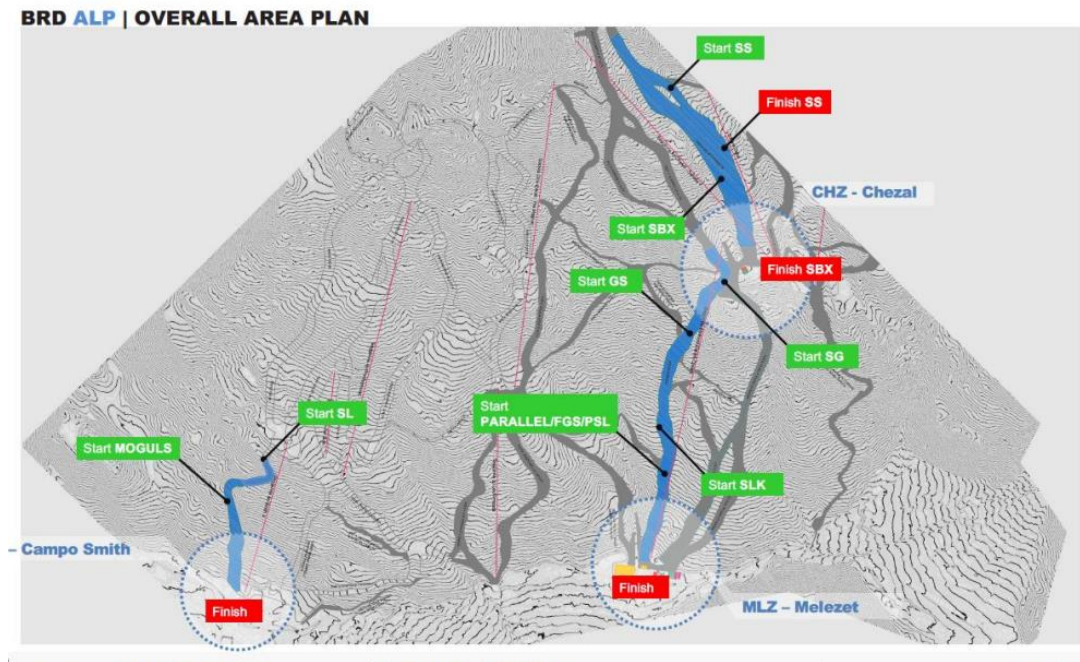
Title	Email
Accreditation	accreditationtorino2025@wugtorino2025.com
Sport Department	sport@wugtorino2025.com
Sport Entries	sportentries@wugtorino2025.com
Delegation Services	delegationservices@wugtorino2025.com
ITO Service Desk	itoservices@wugtorino2025.com



# 8. APPENDICES

## 8.1 Venue Layouts

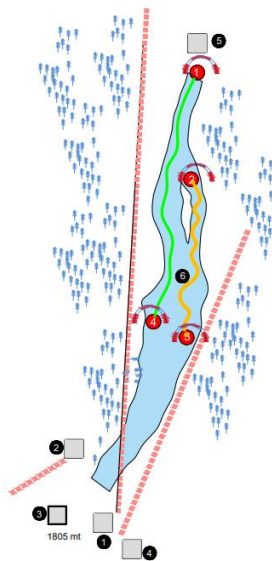
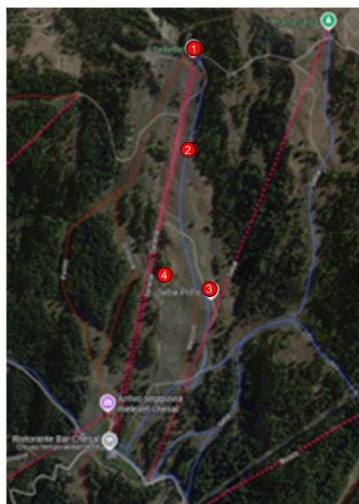
### 8.1.1 VENUE PLANS



### 8.1.2 OVERVIEW SLOPES

#### SELLETTE

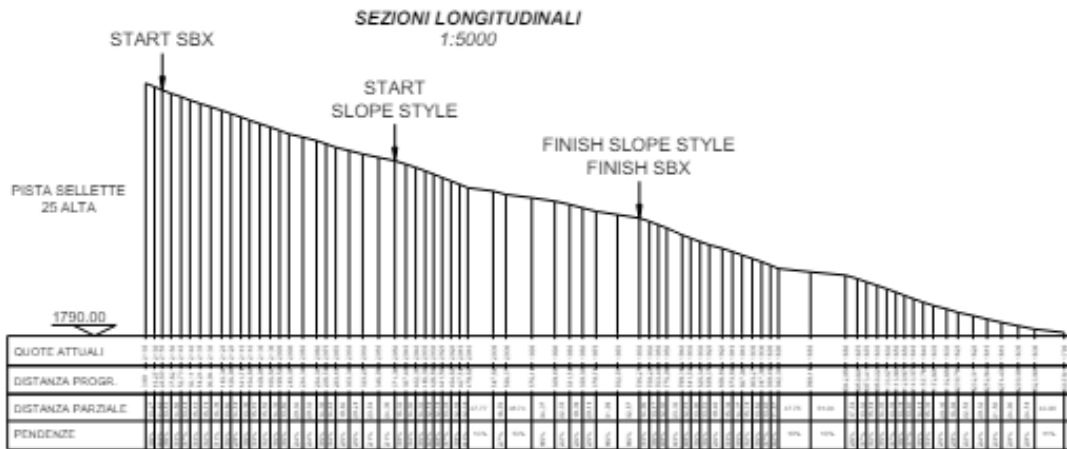
#### BRD SBD FRS SELLETTE SLOPE



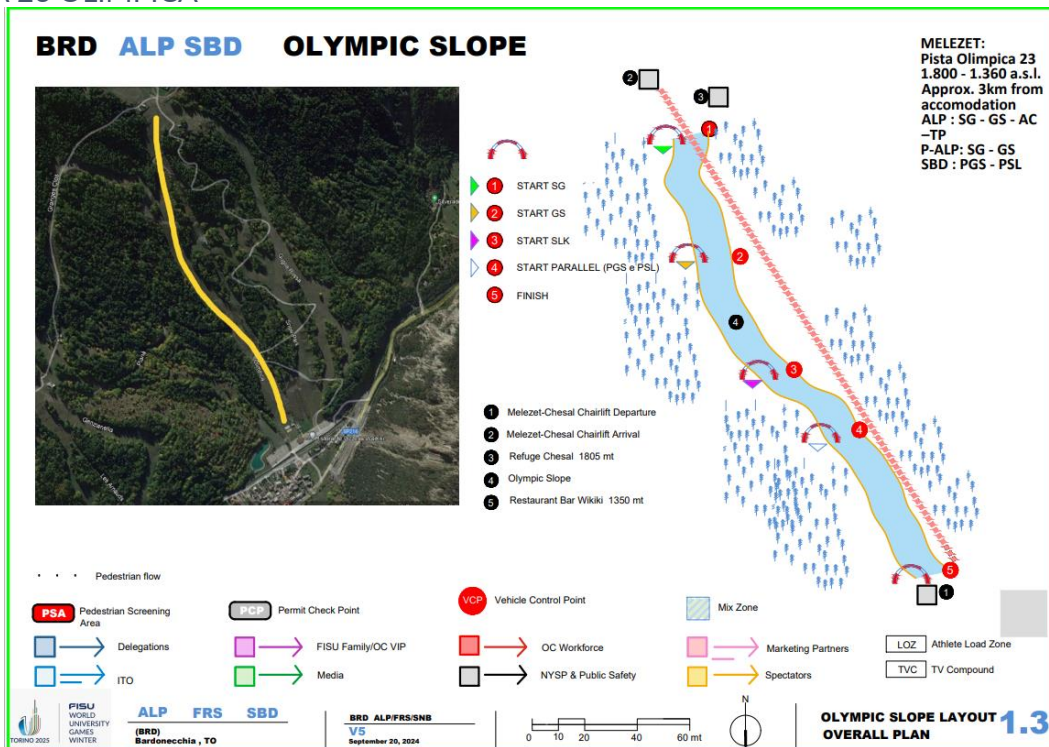
SELLETTE:  
Pista 25  
2.200 -1.783 a.s.l.  
Approx. 3km from  
accommodation  
SBD - FRS:  
SX - SBX - SS - BA

- 1 START SBX
- 2 START SLOPE STYLE
- 3 FINISH SLOPE STYLE
- 4 FINISH SBX

- 1 Sellette Chairlift Departure
- 2 Melezet-Chezal Chairlift Arrival
- 3 Refuge Chesal 1805 mt
- 4 Seba Skilift Departure
- 5 Point of Start 2200 mt
- 6 Slope Sellette n.25

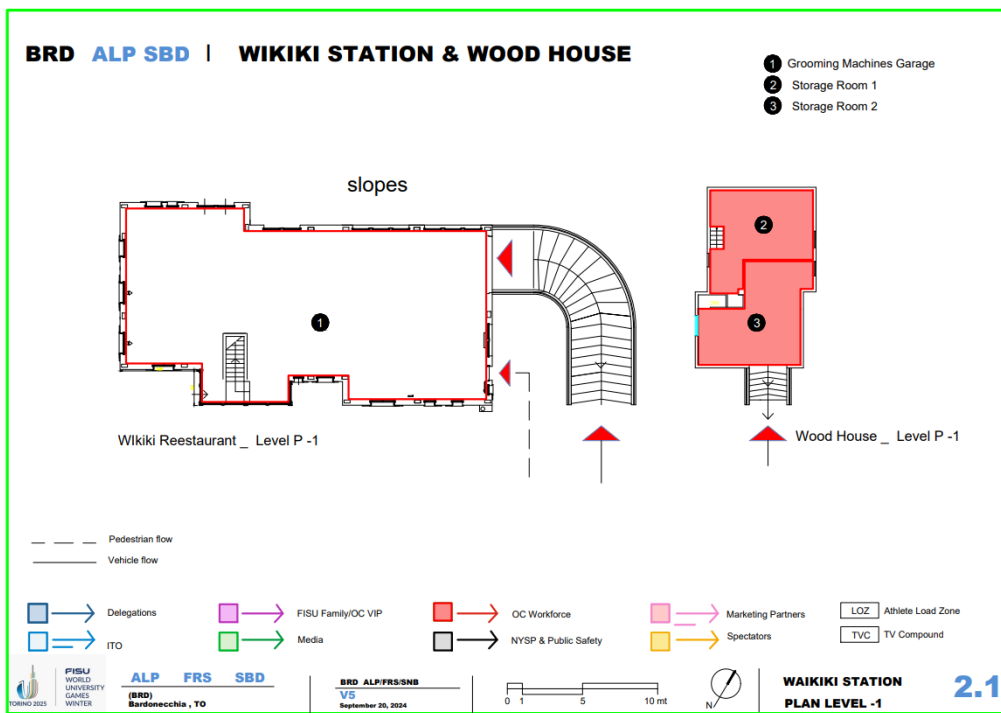
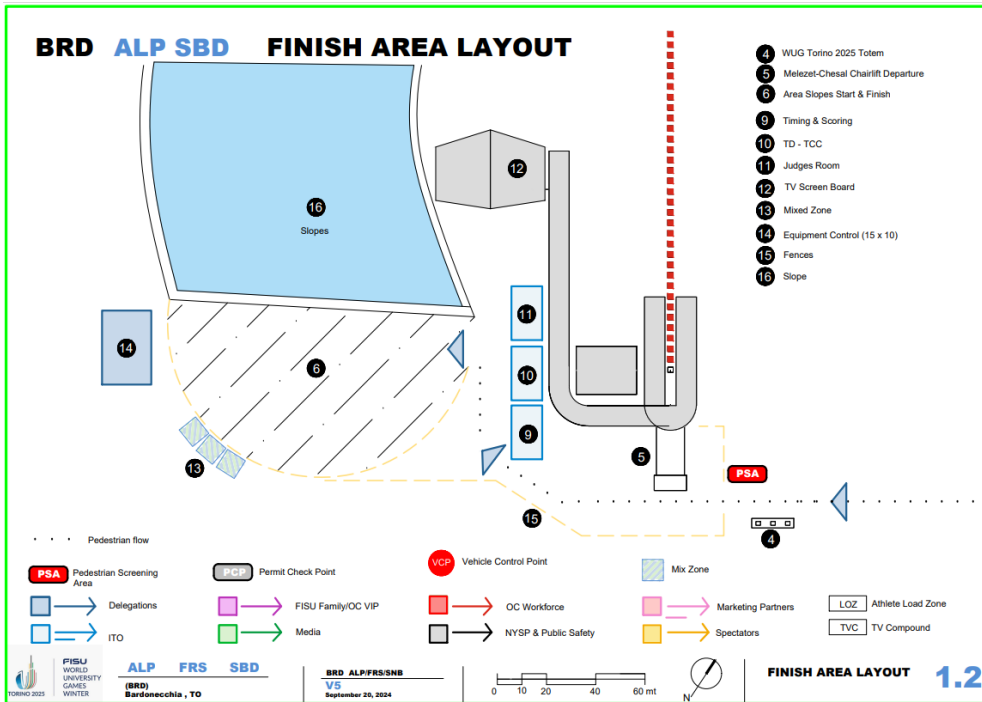


PISTA 23 OLIMPICA





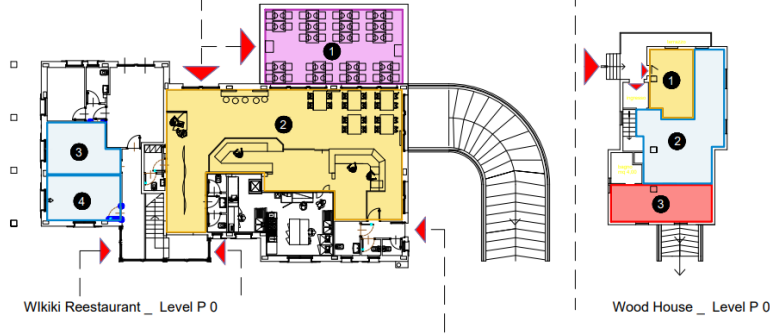




**BRD ALP SBD | WIKIKI STATION & WOOD HOUSE**

- 1 FisU Family & Vip Lounge
- 2 Spectators Refreshment Area
- 3 ALP\_TCC - IF TDs
- 4 SBD\_TCC - IF TDs

- 1 Info Point Sport
- 2 Competition Office
- 3 Storage Room 3



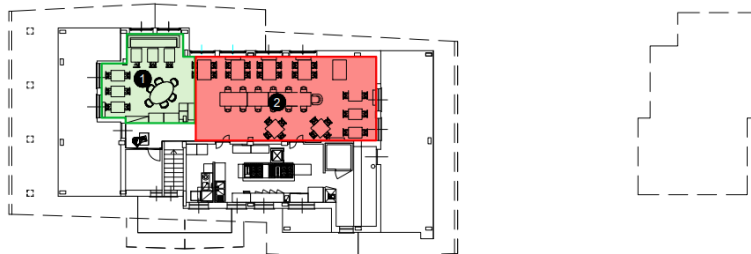
--- Pedestrian flow  
 --- Vehicle flow

→ Delegations    → FISU Family/OC VIP    → OC Workforce    → Marketing Partners    LOZ Athlete Load Zone  
→ ITO    → Media    → NYSP & Public Safety    → Spectators    TVC TV Compound

TORINO 2025    FISU WORLD UNIVERSITY GAMES WINTER    **ALP FRS SBD**    **BRD ALP/FRS/SNB**    **V5**    September 20, 2024    0 1 5 10 mt    **WAIKIKI STATION 2.2**    **PLAN LEVEL 0**

**BRD ALP SBD | WIKIKI STATION & WOOD HOUSE**

- 1 Media Work Station
- 2 Workforce Lounge



→ Delegations    → FISU Family/OC VIP    → OC Workforce    → Marketing Partners    LOZ Athlete Load Zone  
→ ITO    → Media    → NYSP & Public Safety    → Spectators    TVC TV Compound

TORINO 2025    FISU WORLD UNIVERSITY GAMES WINTER    **ALP FRS SBD**    **BRD ALP/FRS/SNB**    **V5**    September 20, 2024    0 1 5 10 mt    **WAIKIKI STATION 2.3**    **PLAN LEVEL 0**



# INSTITUTIONAL PARTNER

Evento organizzato con il supporto di



Ministro per lo Sport e i Giovani



Con il patrocinio di



## MAIN SPONSOR



Assicurazioni



## FISU PARTNER



## MEDIA PARTNER



## OFFICIAL SUPPLIER

