



FISU  
WORLD  
UNIVERSITY  
GAMES  
WINTER



TECHNICAL HANDBOOK

# Ski Orienteering

Version 05/12/2024



**TORINO, ITALY**  
**13 - 23 JANUARY 2025**



# TABLE OF CONTENTS

1. Welcome Messages .....	1
2. Abbreviations.....	3
3. FISU International Technical Committee.....	5
4. General Information .....	5
4.1 Torino 2025 FISU World University Games .....	5
4.2 Competition Schedule .....	6
4.3 Opening and Closing Ceremonies .....	6
5. Competition Information.....	6
5.1 Technical Committee .....	6
5.2 National Technical Officials.....	7
5.3 Competition Structural Chart.....	7
5.4 Technical Regulations .....	7
5.4.1 Entries.....	8
5.4.2 Jury Composition .....	8
5.4.3 Protest and Appeal .....	9
5.5 Competition Format.....	9
5.5.1 Sprint.....	9
5.5.2 Sprint Relay .....	9
5.6 Competition and Training Venue Information.....	9
5.6.1 General Information .....	9
5.6.2 Venue Layouts .....	10
5.6.3 Course Layouts and Technical Data .....	10
5.7 Day-by-Day Schedule .....	10
5.7.1 Cerimonies.....	11
5.7.2 Training.....	11
5.7.3 Reserve Day .....	11
5.7.4 General Technical Meeting.....	12
5.8 Equipment.....	12
5.8.1 Storage and Waxing Rooms.....	12
5.8.2 Waxing Room Equipment.....	12
5.8.3 Fluor Control.....	12
5.9 Doping Control .....	13



5.9.1 List of Prohibited Substances .....	13
5.9.2 Testing .....	13
5.9.3 Doping Control Stations .....	13
5.9.4 Therapeutic Use Exemptions (TUE) .....	14
5.9.5 Structure .....	14
5.10 Mascot and Medal Ceremonies .....	15
5.10.1 Mascot Ceremony .....	15
5.10.2 Medal Ceremony .....	15
5.10.3 Diploma of Honor .....	16
5.11 Media Interviews.....	16
5.12 Sport Information Services.....	16
5.12.1 Online Sport Information Services.....	16
5.12.2 Sport Information at the Venue.....	17
5.12.3 Sport Information Distribution.....	17
6. Service Information .....	17
6.1. Accreditation .....	17
6.2 Radio Frequency Control.....	18
6.3 Insurance and Responsibilities .....	18
6.4 Transportation.....	18
6.4.1. Transportation System for athletes and Team Officials (TA).....	18
6.4.2 Transportation Services for All Accredited Stakeholders – Transport Connect (TC)	19
6.5 Food & Beverage.....	19
6.5.1 Mealtimes.....	19
6.5.2 FNB Services at the Competition Venues .....	19
6.6 Medical Services .....	19
6.6.1 Conditions of Medical Assistance.....	19
6.6.2 Medical Support Structure .....	20
6.6.3. Medical Support in the Accommodation Sites.....	20
6.6.4. Dedicated Hospitals and Specialized Medical Facilities.....	20
6.7 Weather.....	20
7. OC Contacts .....	20
8. Appendices.....	22
8.1. Venue Layouts .....	22
8.1.1 Venue Plans.....	22



8.1.2 Course Layout and technical Data .....	22
8.2 Geographical Overview Venues .....	23



## 1. WELCOME MESSAGES

*Dear delegates,*

*Dear friends and colleagues,*

*The 2025 FISU World University Games Winter in Torino, Piemonte (Italy) is drawing inexorably closer. "Torino" is a name that has a unique and incomparable significance for FISU. Not only was FISU founded in this beautiful city in 1949, but Torino also hosted the first ever Summer Universiade ten years later in 1959. Moreover, Primo Nebiolo, FISU President from 1961 to 1999, also contributed to strongly linking Torino and FISU together.*

*Having held the Winter Olympics in 2006, Torino also hosted the Winter Universiade in 2007. Now, we are all preparing to return to the birthplace of both FISU and the Universiade, but also to the mountains in Sestriere, host of the 1966 Winter Universiade and an important cluster for the upcoming Torino 2025 FISU World University Games Winter.*

*I am very grateful to the Organising Committee of the Torino 2025 FISU Games Winter, but also to the political, academic and sport authorities who are making this student sporting highlight - set from 13 to 23 January 2025 - possible. It is thanks to their unwavering commitment and belief in the values of university sport that these FISU Games will take place.*

*I wish you all a smooth and successful preparation for your mission at the Torino 2025 FISU World University Games Winter and look forward to welcoming you to the opening ceremony in Torino on 13 January 2025.*



*Leonz EDER*

*President of the International University Sports Federation*



*Dear Delegates,  
Dear Student-Athletes, Coaches, Dignitaries, and Presidents of Member Federations,  
Dear all,*

*It is a great pleasure for me to present the Technical Handbook for the Torino 2025 FISU World University Games Winter.*

*This handbook contains all the necessary information about the Games and the technical aspects for each sport, serving as a comprehensive guide for all participants and delegations involved.*

*The Torino 2025 FISU World University Games Winter will feature a total of 11 sports, divided into snow and ice disciplines.*

*However, what fills me with particular pride is that, for the first time in the history of the FISU World University Games Winter, we will be hosting two parasports competitions: Para Alpine Skiing and Para Cross-Country Skiing.*

*This event promises the perfect setting for high-level competition across six stunning areas of Piedmont, an Italian region with a rich history in both sports and science: Turin, Sestriere, Bardonecchia, Pragelato, Pinerolo, and Torre Pellice.*

*I am looking forward to welcoming the big family of the Winter University Sports in Piedmont in just a few months' time!*

A handwritten signature in black ink, reading "Alessandro Sciretti". The signature is written in a cursive, flowing style.

*Alessandro Sciretti  
President of Torino 2025 FISU World University Games*



## 2. ABBREVIATIONS

Abbreviation	Name in full
ACM	Assistant Competition Manager
ATH	Athletes
ATHL	Athletes Lounge
AVM	Assistant Venue Manager
ADAMS	Anti-Doping Administration and Management System
AMS	Athlete Medical Station
ATD	Assistant Technical Delegate
C	Coaches
CGS	FISU Committee for Sport Manager
CIS	Commentator Information System
CIC	FISU International Control Committee
CM	Competition Manager
CMI	FISU International Medical Committee
CMS	Competition Services
CO	Competition Office
CT	FISU Technical Committee
DbD	Day by Day Schedule
DCS	Doping Control Station
DNQ	Did Not Qualified
DSQ	Disqualified
EC	FISU Executive Committee
FISO	Federazione Italiana Ski Orienteering
FISU	International University Sports Federation
FISUL	FISU and VIP Lounge
FNB	Food & Beverage
FoP	Field of Play



HoD	Head of Delegation
IF	International Federation
IOF	International Orienteering Federation
IR	International Referee
ITC	International Technical Committee
ITO	International Technical Official
ITOL	International Technical Official Lounge
J	Judges
LOC	Local Organising Committee
MED	Medical Services
MET	Media Stand
MIC	Main Information Centre
MOC	Main Operation Centre
MR	Minimum Requirements
MWS	Media Working Station
MXZ	Mixed Zone
NADO	National Anti-Doping Organisation
NOC	National Olympic Committee
NF	National Federation
NTO	National Technical Official
NUSF	National University Sports Federation
OC	Organising Committee
PCR	Press Conference Room
SCC	Sport Command Centre
SID	Sport Information Desk
SMC	Sport Management Centre
SOR	Ski Orienteering
T&S	Timing and Scoring





TD	Technical Delegate
TCC	Technical Committee Chair
TCM	Team Captain's Meeting
TL	Team Leader
TO	Technical Official
TUE	Therapeutic Use Exemptions
VM	Venue Manager
WADA	World Anti-Doping Agency

### 3. FISU INTERNATIONAL TECHNICAL COMMITTEE

Position	First Name	Last Name	Country
FISU TCC ALP / PARA-ALP	Matjaz	KRANJC	SLO
FISU TCC BTH	Ondrej	RYBAR	CZE
FISU TCC CCS / PARA-CCS	Zofia Stefania	KIELPINSKA	POL
FISU TCC FRS	Magnus	FERRY	SWE
FISU TCC CUR	Scott	ARNOLD	CAN
FISU TCC IHO	Reto	BERTOLOTTI	SUI
FISU TCC IHO	Igor	NEMECEK	SVK
FISU TCC FSK	Dingding	LIU	CHN
FISU TCC SBD	Ola	SUNDEKVIST	SWE
FISU TCC SMO	Zuzanna	RYCHLIKOVA	SVK
FISU TCC SOR	Markku	VAUHKONEN	FIN
FISU TCC STK	So Hee	KIM	KOR

## 4. GENERAL INFORMATION

### 4.1 Torino 2025 FISU World University Games

Date: 13 - 23 January 2025



Location: Turin, Italy

Sports Program: 11 sports, 96 medal events

Venues: 11 venues

## 4.2 Competition Schedule

[Download | Torino 2025 \(wugtorino2025.com\)](http://wugtorino2025.com)

## 4.3 Opening and Closing Ceremonies

### Opening Ceremony

Date: 13 January 2025

Location: Inalpi Arena, Corso Sebastopoli, 123, 10134 Torino TO

Beginning of Ceremony: 19:30

### Closing Ceremony

Date: 23 January 2025

Location: Piazzetta Reale (Torino)

Beginning of Ceremony: 20:00

## 5. COMPETITION INFORMATION

### 5.1 Technical Committee

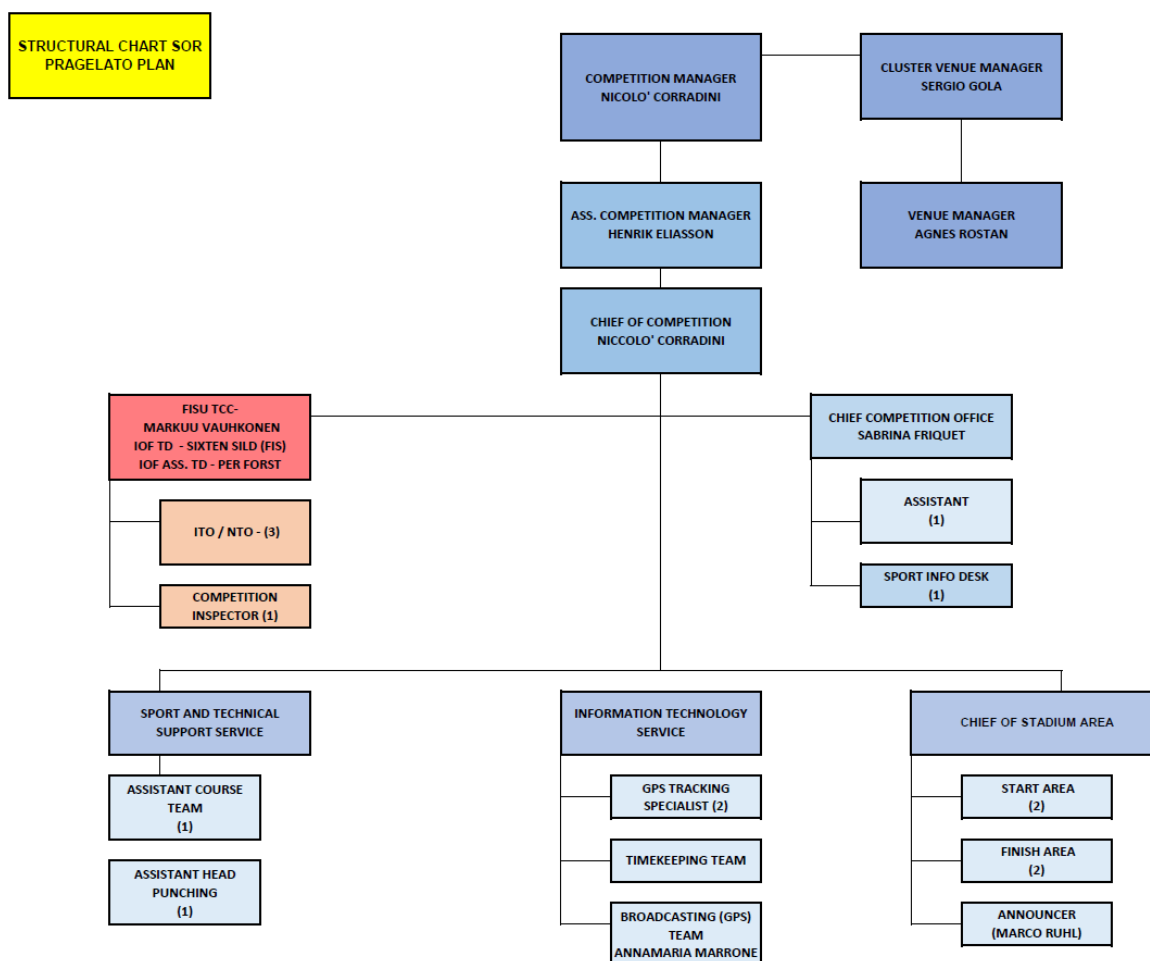
FISU Technical Committee Chair	Markku VAUHKONEN (FIN)
IOF Technical Delegate	Sixten SILD (EST)
Assistant Technical Delegate	Per FROST (SWE)
Chief of Competition / Competition Manager	Nicolò CORRADINI (ITA)
Assistant Competition Manager	Henrik ELIASSON (SWE)



## 5.2 National Technical Officials

FISO Chief of Course Planning	Roberto PRADEL (ITA)
FISO Chief of Punching System	Eduardo TONA (ITA)

## 5.3 Competition Structural Chart



## 5.4 Technical Regulations

The Ski Orienteering events will be organised in accordance with the most recent technical regulations of the International Orienteering Federation (IOF), except when specifically amended by these regulations or by the FISU Games International Technical Committee (FISU Games ITC).

The programme and duration of the competitions will be fixed by the FISU Executive Committee in agreement with the Organising Committee and the FISU Games ITC.

In principle, the programme will last four days and will include the following events:



Men	Women
Sprint	Sprint
Sprint Relay	

#### 5.4.1 ENTRIES

Each country may enter a maximum of sixteen (16) competitors (with a maximum of eight (8) men and eight (8) women).

Each country may enter in:

- Sprint: maximum 6 men and 6 women
- Sprint relay: maximum 2 teams per country, each team composed of 2 athletes (at least 1 W per team)

Athletes participating in Ski Orienteering, who are willing to compete as well in Cross-Country Skiing (CCS), will only be allowed to participate in the CCS trainings (both unofficial and officials) and competitions taking place after the completion of all the Ski Orienteering events. Following the Schedule published only participation in CCS Mass Start official trainings and competitions will be allowed

Athletes participating in more than one sport shall register in all concerned sports in the OAS Individual Entry (no later than one month prior to the opening ceremony of the FISU Games), no additional entries in other sports are allowed after the I-Entry deadline

The Head of Delegation or his/her representative shall hand in the entry list according to the deadlines listed in the Day-by-Day schedule.

Only with an Accreditation Card approved by the FISU international Control Committee CIC can an athlete be considered for the draw of a starting list and be entitled to participate in any of the competitions.

At the first Team General Technical Meeting, the Head of Delegation or his/her representative shall confirm and the official entry list of athletes.

#### 5.4.2 JURY COMPOSITION

A jury consisting of the FISU TCC and two (2) team officials shall be appointed at the first Team Captains Meeting.

The IOF Technical Delegate shall chair the jury without voting rights. The jury shall remain the same throughout the competition week.



### 5.4.3 PROTEST AND APPEAL

Protests must be submitted in writing to the competition secretary or the TD, using the official IOF Protest Form, for the attention of the competition jury, and must be accompanied by a fee of €100.

The IOF protest form can be obtained from the Competition Secretary or downloaded from the IOF website: [Insert link](#)

Protest must be within 15 min after the posting of the provisional results.

Each Head of Delegation or his/her deputy is authorized to lodge an appeal against the decision of the Jury. This appeal must be submitted in writing to the Jury of Appeal.

Any sport disciplinary situation which cannot be satisfactorily resolved by the Sport Technical Committee (TC) and the sport specific disciplinary regulations will be reported to the FISU Disciplinary Committee for further action to be taken. Where appropriate, a report will also be sent to the IOF.

## 5.5 Competition Format

### 5.5.1 SPRINT

- The race with individual start and 1 minute start interval
- Maximum 6 athletes per country and category
- Start position drawn according to starting groups
- Starting groups allocation decided by team leaders
- Best time with correct punching wins

### 5.5.2 SPRINT RELAY

- The race with mass start
- Maximum 2 teams per country of two (2) athletes (1 man + 1 woman or 2 women)
- Women start on the first, third and fifth leg
- First athlete in the finish with correct punching wins
- Start position based on previous FISU Championships or FISU Games results
- First team reaching the finish line with correct punching wins

## 5.6 Competition and Training Venue Information

### 5.6.1 GENERAL INFORMATION

<b>CLUSTER VENUE MANAGER</b>	<b>Sergio GOLA</b>
<b>OC VENUE MANAGER</b>	<b>Agnes ROSTAN</b>



Venue	Function	Location	Distance from accommodation to venue
Pragelato Plan (ITA)	Training / Competition	44.9935316 6.9158998	xxx

## 5.6.2 VENUE LAYOUTS

*Please refer to the Appendix 8.1.1*

## 5.6.3 COURSE LAYOUTS AND TECHNICAL DATA

*See Appendix, Section 8.1.2*

## 5.7 Day-by-Day Schedule

### Categories:

Training
Competition
Technical Meeting / Draw
Mascot Ceremony
Medal Ceremony
Social Event
Reserve day

*Some changes may be applied.*

	Sport	Time		Event	Location
10 Jan	ALL	17:00	19:00	FISU International Technical Committee (ITC) Meeting	FISU Hotel Torino Majestic
13 Jan	ALL	19:30		Opening Ceremony	Inalpi Arena (TO)
17 Jan	SOR	19:00	20:00	1st General Technical Meeting (GTM)	Torre Rossa (TBC)
18 Jan	SOR	14:00	16:00	Official Training (Model Event)	Pragelato Plan
18 Jan	SOR	19:00	20:00	Team Captains' Meeting	Torre Rossa (TBC)
19 Jan	SOR	14:00	15:00	Sprint M	Pragelato Plan
19 Jan	SOR	14:50	15:00	Mascot Ceremony Sprint M	Pragelato Plan



19 Jan	SOR	15:00	16:00	Sprint W	Pragelato Plan
19 Jan	SOR	15:50	16:00	Mascot Ceremony Sprint W	Pragelato Plan
19 Jan	SOR	20:00	20:10	Medal Ceremony Sprint M	Sestriere Piazza Fraiteve
19 Jan	SOR	20:10	20:20	Medal Ceremony Sprint W	Sestriere Piazza Fraiteve
20 Jan	SOR			Reserve Day	Pragelato Plan
20 Jan	SOR	19:00	20:00	Team Captains' Meeting	Torre Rossa (TBC)
21 Jan	SOR	14:30	15:40	Sprint Relay	Pragelato Plan
21 Jan	SOR	15:30	15:40	Mascot Ceremony Sprint Relay	Pragelato Plan
21 Jan	SOR	18:20	18:30	Medal Ceremony Sprint Relay	Sestriere Piazza Fraiteve
22 Jan	SOR			Reserve Day	Pragelato Plan
23 Jan	ALL	20:00		Closing Ceremony	Piazzetta Reale (Torino)

### 5.7.1 CERIMONIES

Mascot Ceremony will be held in the Finish Area, immediately after the finishing of each competition. Medal Ceremonies for men and women will be held at Medal Plaza, in Sestriere.

For more information, please refer to chapter 5.10.

### 5.7.2 TRAINING

Depending on the snow conditions, unofficial trainings before the official start are possible. The unofficial trainings will take place in **Val Troncea**, Maps with some basic courses, tracks and controls will be available for training purposes. The unofficial and official training sites are easily accessible from the stadium. Only the buildings of the stadium are allowed. **A designated ski testing slope will be accessible as well.** For detailed information about the official and forbidden areas, as well as for unofficial trainings, please see maps in chapter 8.2.3.

### 5.7.3 RESERVE DAY

The OC will do its best to hold all competitions in the scheduled days. However, under exceptional weather conditions the competitions may have to be postponed/rescheduled.



#### 5.7.4 GENERAL TECHNICAL MEETING

The 1st General Technical Meeting will be held on the 17<sup>th</sup> of January 2025 at 19:00 at the TCM room (location will be defined in a later stage). At the 1st Team Captains Meeting, the Head of Delegation or his/her representative shall confirm and sign the official entry list of athletes. Any further details and clarifications which are not yet described in the Technical Handbook will be communicated at the respective Team Captains Meeting.

Only with an Accreditation Card approved by the CIC can an athlete be considered for the draw of a starting list and be entitled to participate in any of the competitions.

### 5.8 Equipment

Clothing and equipment control will in principle follow IOF rules. The equipment control will be carried out in respect to the recent technical FIS regulations if no additional FISU rule is determined. Each competitor is responsible for the equipment that he/she uses. This includes clothing as well as apparatus with technical functions. Participants must comply with the IOF rules regarding equipment: <https://orienteering.sport/skio/competition-rules/>

#### 5.8.1 STORAGE AND WAXING ROOMS

The Torino 2025 FISU World University Games will provide sport equipment storage and waxing rooms for the teams. All facilities are built and organized according to all international requirements. Waxing rooms and cabins for Cross Country Skiing will be on disposal for all Ski Orienteering teams and will be provided on site at the competition venue. Sections will be allocated to the respective nations and shared among their sports.

#### 5.8.2 WAXING ROOM EQUIPMENT

The waxing rooms are equipped with special tables and equipment for preparing skis with lighting, several electric outlets, adequate heating, ski racks and waste bins.

The OC is planning on providing waxing tables in each area. Each waxing area (for all relevant sports) will have a connection of 220v power, plug-ins and extensions.

The OC will NOT be providing power converters/transformers, waxing irons, vises, etc.

#### 5.8.3 FLUOR CONTROL

As stated in FISU Technical Regulation for the Torino 2025 FISU World University Games, the OC will follow the most recent IOF Technical Rules. Full implementation of the fluor wax ban is applied for the Torino 2025 FISU World University Games events. Testing procedure is in the





process of development to ensure that all events will be regulated not using fluorine waxes which is mandatory for FIS competitions.

The procedure for testing will be handled by IOF. All athletes and team TO must know that fluor use is officially banned, therefore everyone must behave accordingly.

Testing procedures will be announced during TCM.

## 5.9 Doping Control

Doping Control will be carried out in accordance with the WADA World Anti-Doping Code and FISU regulations: Download | Torino 2025 ([wugtorino2025.com](http://wugtorino2025.com))

### 5.9.1 LIST OF PROHIBITED SUBSTANCES

The actual list of prohibited substances and methods is defined in accordance with WADA international standards. National University Sports Federations will be responsible for ensuring that their delegations, namely athletes, are made aware of the actual version of the prohibited list. For the current WADA list of prohibited substances and methods, please refer to the following website: [www.wada-ama.org](http://www.wada-ama.org).

### 5.9.2 TESTING

The required number of samples will be selected during the “in-competition” and “out-of-competition” periods in accordance with the Test Distribution Plan. “In-competition” is defined as the period commencing 12 hours before a competition in which the athlete is scheduled to participate through to the end of such competition and the sample collection process related to such competition. “Out-of-competition” is defined as any doping control which is not “in-competition.” During the Winter Universiade, athletes can be tested at any time without prior notice. Urine and/or blood samples will be collected in compliance with the WADA International Standard for Testing and Investigations (ISTI). A paperless system will be used for the sample collection. The testing will be conducted by Doping Control Officers (DCO) from an anti-doping organisation accredited by WADA. Testing will be conducted under the supervision of the FISU International Medical Committee. Doping samples will be sent to the WADA-accredited anti-doping laboratory (LAD) in (location), Italy. All results will be sent to the Chairman of the FISU International Medical Committee and entered into the ADAMS system. In case of violation of FISU Anti-Doping Rules, the responsibility for processing the results lies with the FISU International Medical Committee.

### 5.9.3 DOPING CONTROL STATIONS

Doping control stations are located at each sports venue or in close proximity. The main doping control station is located in the Host City of Torino. All doping control stations will be marked



with signs and the way to them will be shown by the signage. After the completion of the doping control procedure, all samples collected at each doping control station will be packaged and, together with the necessary support documentation (doping control protocols), sent to the WADA accredited anti-doping laboratory in accordance with the international standards. All the information concerning the doping control programme during the Winter Universiade is confidential according to WADA and FISU requirements. When visiting a doping control station, athletes are required to have Accreditation Cards.

Doping control station for Ski Orienteering athletes will be allocated at Pragelato Plan Venue.

Doping control station for out of competition controls and outside venue operating hours will be allocated at medical station of and in the hotels of the athletes.

#### 5.9.4 THERAPEUTIC USE EXEMPTIONS (TUE)

Winter Universiade participants who require Therapeutic Use Exemption (TUE) must make an appropriate request to the National Anti-Doping Organisation or International Federation before participation in the Winter Universiade. The World Anti-Doping Agency International Standard for TUE will be applied in this case. Every athlete who uses a substance or a method included in the list of prohibited substances is obliged to be in possession of a completed TUE form of the established standard from the moment of arriving until the departure from the athletes' village after the closing ceremony of the Winter Universiade.

If there is a need in the use of a prohibited substance or a prohibited method for medical reasons after the opening of the Winter Universiade, an athlete must submit a request for TUE to the FISU International Medical Committee as a matter of urgency ([antidoping@fisu.net](mailto:antidoping@fisu.net)). The responsibility for completing the TUE form and submitting an application to the FISU International Medical Committee lies with the delegation physician. If the delegation does not have its own physician, the athlete shall submit a request for TUE with the attachment of medical documentation confirming the fact of providing him/ her with emergency medical treatment to the FISU International Medical Committee ([antidoping@fisu.net](mailto:antidoping@fisu.net)).

#### 5.9.5 STRUCTURE

Chair of FISU International Medical Committee	Dr. Dusan HAMAR (SVK)
OC Head of Medical Services	Dr. Gianluca GHISELLI (ITA)
OC Head of Doping Control	Dr. Gianluca GHISELLI (ITA)



## 5.10 Mascot and Medal Ceremonies

### 5.10.1 MASCOT CEREMONY

For Snow Sport OC will organize a simple Mascot Ceremony at the Finish Area immediately after each Competition.

Mascot will be handed to the winners right after the confirmation of the final results. They will be asked to pose with the Mascots in hand for the Winners Pictures in front of a feet podium and the track as a Background.

The winners will be announced by the Sport Presentation Speaker and the Media will be invited to take the picture or the video for the winners.

### 5.10.2 MEDAL CEREMONY

- The medal ceremonies will be held at Medal Plaza in Sestrière, accordingly to the detailed Day by Day schedule. For the Day-by-Day schedule please refer to the chapter 5.6.
- The official languages for the medal ceremonies will be English.
- The medallists of each event must attend the Medal Ceremonies. In the event that a medallist is unable to attend, the medal is delivered to an official of the relevant delegation. He/she must be dressed in the delegation's official outfit. He/she must not mount the podium but stand behind it. The official awarding will hand the medal and flowers/mascot/gift over the podium. During the FISU Anthem, the delegation official stands behind the podium.
- In the event all medallists cannot be present, the Medal Ceremony will be postponed.
- If an athlete or team is disqualified, the medal(s) shall be returned to FISU.

During the medal ceremony:

- The athletes are not allowed to take any national flag or any other national, cultural or religious symbol on the podium;
- The national flags of the first three (3) medallists will be raised and the only anthem played will be the FISU anthem, the Gaudeamus Igitur;
- During the playing of the FISU anthem and the raising of the flags, they shall face the flags and conduct themselves in a dignified manner at all times. No national anthem is played during the ceremony.
- Athletes are expected to take off their caps and sunglasses when receiving the medal and keep it in hand throughout the ceremony (i.e. playing of the FISU anthem and raising of the flags);
- Athletes, authorities and accompanying persons are required to face the flags while they are being raised and the FISU anthem is being played.
- The medallists are expected to attend the ceremony in the uniforms they wore at the opening ceremony but are also allowed to attend the official ceremony wearing sport uniforms when the ceremony takes place immediately after the competition.



- After the medals are awarded, athletes must remain in the awarding area for photo shooting on the podium with medals.
- In order to take the best photo during the shooting athletes should follow the recommendations of photographers.

### 5.10.3 DIPLOMA OF HONOR

The athletes ranked one (1) to eight (8) will receive a Diploma of Honour.

For team events, each team member, from teams ranked one (1) to six (6), will receive a personal diploma of honour mentioning his/her name and the team ranking.

Diplomas of honour are not distributed at the medal ceremony. They are sent in PDF format to the Head of Delegation or an appointed representative of each delegation at the end of the event.

## 5.11 Media Interviews

Venue Media Centres for media representatives are organized at all Torino 2025 competition sites.

At the conclusion of a competition, all athletes must leave the Field of Play (FoP) through the mixed zone where brief interviews will be held. Every athlete/coach should be ready to communicate with media representatives upon their request. In case of cold weather, team representatives should give an athlete a warm jacket or a blanket prior to entering the mixed zone. A volunteer from the Venue Media Centre will coordinate the exchanges between athletes/coaches and media.

Support for translation in English will be provided during the mixed zone interviews. If an athlete/coach does not speak this language, they should invite their team interpreter to the mixed zone.

Media conferences are held at the beginning and the end of Torino 2025 FISU World University Games and upon necessity.

## 5.12 Sport Information Services

### 5.12.1 ONLINE SPORT INFORMATION SERVICES

Online information will be available on the official website: <https://wugtorino2025.com>

In addition, more detailed information and publications for teams can be accessed under the following link: <https://wugtorino2025.com/delegation-services/>



### 5.12.2 SPORT INFORMATION AT THE VENUE

A Sport Information Desk (SID) will be located at each venue, providing most recent information related to the competitions and receiving requests from the team representative(s).

The Sport Information Desk will operate from 10 to 17 January 2025 in accordance with the competitions and training schedules (1 hour before and after the events).

### 5.12.3 SPORT INFORMATION DISTRIBUTION

Information	Online	Venue	Delegation Accomodation
Competition Schedule	+	+	+
Start List/ Result List	+	+	+
Change to Schedule	+	+	+
Special Announcements	+	+	+
Weather Information	+	+	+
Medal Table	+		
Technical Handbook	+		
FISU Regulations	+		
Other Information		+	+
Answer to Team Questions		+	+

## 6. SERVICE INFORMATION

### 6.1. Accreditation

For the Accreditation procedure please refer to the HoD Manual.

**IMPORTANT:** A personalised Accreditation Card with a photo, name and function of the cardholder carries information about the access rights and privileges available to him/her. Upon arrival, the Accreditation Card equipped with QR-code enables members of delegations a 24-hour temporary access to the Torino 2025 FISU World University Games venues in accordance with the access rights on the Accreditation Card. The temporary access does not allow participation in the competition. After CIC's approval the Accreditation Card will be fully activated.



## 6.2 Radio Frequency Control (To be updated)

At all Torino 2025 FISU World University Games venues, any use of radio frequencies (e.g., walkie-talkies, radio stations, wireless cameras, Wi-Fi access points, wireless microphones, FM-transmitters, and any other wireless equipment) requires a temporary radio license from the Ministry of Economic Development (Ministero dello Sviluppo Economico, MISE) and must ensure it doesn't conflict with the Italian emergency services, including the police, EMTs (Emergency Medical Technicians), and other first responders.

If you are planning to utilize any of the items noted above which require bandwidth on the frequency spectrum, please fill out the Frequency Form (to be provided at a later stage) and send it to [technology@wugtorino2025.com](mailto:technology@wugtorino2025.com).

The Organising Committee will be registering a range of available Radio Frequencies starting from September 2024. We will then provide the frequencies available to each team/country to determine if their existing equipment will work within the range available in the Torino region.

Your wireless devices will be registered and checked by the frequency-organizer. You will receive a confirmation if the devices can be registered in Italy.

By the end of November, you will receive the frequencies allocated to you.

Important: Every frequency user is responsible for submitting registration details for all their wireless devices accordingly and in a timely manner.

Fees/costs (tbc) for temporary radio licenses must be paid to the Organising Committee by the delegation or frequency users applying for an Italian radio license.

## 6.3 Insurance and Responsibilities

Participating countries must adhere to the insurance requirements and conditions as stipulated in Section 5.6 of the Torino 2025 FISU World University Games Regulations.

## 6.4 Transportation

### 6.4.1. TRANSPORTATION SYSTEM FOR ATHLETES AND TEAM OFFICIALS (TA)

The transportation system for athletes and team officials will provide transport services from 18th to 22nd January 2025 (Ski Orienteering). Routes in the transportation system for athletes and official delegation members are marked with the abbreviation "TA" (Transport Athletes). Vehicles are equipped with placards indicating route number for the individual and team sports and spectating athletes.

Route Number	TA - XX
Sport	Ski Orienteering



<b>Route</b>	Athletes Village – Pragelato Plan
<b>Distance to the Venue</b>	XX km
<b>Time</b>	XX min

#### 6.4.2 TRANSPORTATION SERVICES FOR ALL ACCREDITED STAKEHOLDERS – TRANSPORT CONNECT (TC)

Scheduled buses are provided between Torino and the competition venues for all accredited stakeholders from 19th to 22nd January 2025. Buses will operate in accordance with the competition schedule. All athletes and officials, regardless of their delegations and sport, will have access to the bus transportations system TC.

Detailed information will be available in the Transportation Guide.

### 6.5 Food & Beverage

This information will be included in the next version of the Technical Handbook.

#### 6.5.1 MEALTIMES

- Breakfast: HH:mm - HH:mm
- Lunch: HH:mm - HH:mm
- Dinner: HH:mm - HH:mm
- Late snack: HH:mm - HH:mm

The dining hall hours of operations will be adjusted to accommodate Delegation’s Competition Schedule for early morning or late-night competitions.

#### 6.5.2 FNB SERVICES AT THE COMPETITION VENUES

An athletes’ lounge will be provided one (1) hour prior to the competition until one (1) hour after the competition. This service is provided from the start of the first official training.

### 6.6 Medical Services

#### 6.6.1 CONDITIONS OF MEDICAL ASSISTANCE

During the Torino 2025 FISU World University Games, in the event of life-threatening diseases and conditions or in any situations requiring urgent medical treatment, emergency medical assistance is provided to all client groups from 8-25 January 2025. Individuals that intend to arrive earlier or leave later must arrange for their own adequate travel insurance to cover medical costs. Immediate (except for emergency) and planned medical care is provided based on:



Immediate (except for emergency) and planned medical care is provided based on:

- an obligatory medical insurance agreement
- a paid medical service agreement
- a voluntary health insurance agreement
- health insurance

#### 6.6.2 MEDICAL SUPPORT STRUCTURE

- Mobile medical crews in the Field of Play of the competition venues
- Ambulance crews at the competition venues
- Dedicated hospitals and specialized medical facilities
- Medical stations at not competition venues as hotel and villages.

\*Please refer to the Medical Services Guide for more details.

#### 6.6.3. MEDICAL SUPPORT IN THE ACCOMMODATION SITES

Details can be found in the Medical Services Guide. Information to be defined at a later stage.

#### 6.6.4. DEDICATED HOSPITALS AND SPECIALIZED MEDICAL FACILITIES

Additional information and locations of all hospitals in the region will be available in the Medical Service Guide.

### 6.7 Weather

For weather information visit the following link:

[https://www.arpa.piemonte.it/rischi\\_naturali/snippets\\_arpa/meteo/](https://www.arpa.piemonte.it/rischi_naturali/snippets_arpa/meteo/)

Otherwise, weather information can be picked up at Sport Information Centre at each of the village as well as online and at other locations, including on the Games website.

## 7. OC CONTACTS

Title	Email
Accreditation	accreditationtorino2025@wugtorino2025.com
Sport Department	sport@wugtorino2025.com





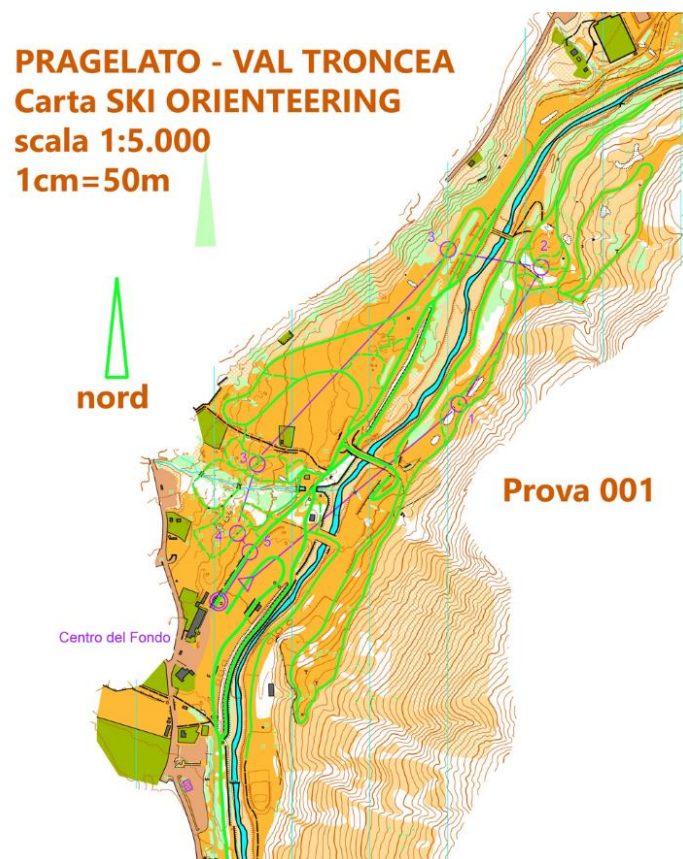
Sport Entries	<a href="mailto:sportentries@wugtorino2025.com">sportentries@wugtorino2025.com</a>
Delegation Services	<a href="mailto:delegationservices@wugtorino2025.com">delegationservices@wugtorino2025.com</a>
ITO Service Desk	<a href="mailto:itoservices@wugtorino2025.com">itoservices@wugtorino2025.com</a>



## 8. APPENDICES

### 8.1. Venue Layouts

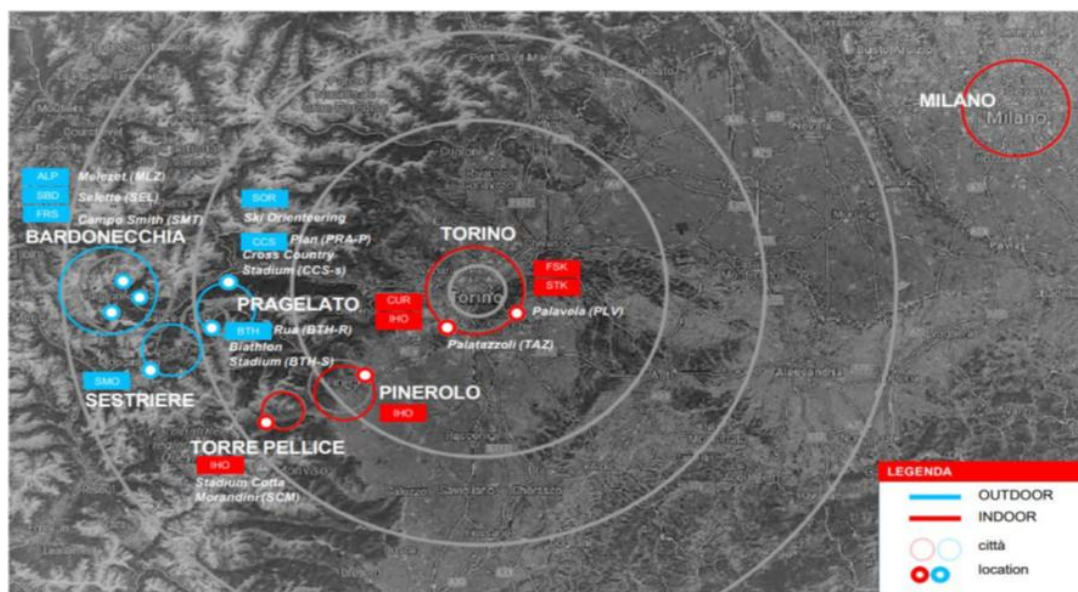
#### 8.1.1 VENUE PLANS



#### 8.1.2 COURSE LAYOUT AND TECHNICAL DATA



## 8.2 GEOGRAPHICAL OVERVIEW VENUES



# INSTITUTIONAL PARTNER

Evento organizzato con il supporto di



Ministro per lo Sport e i Giovani



Con il patrocinio di



## MAIN SPONSOR



Assicurazioni



## FISU PARTNER



QIAODAN

## MEDIA PARTNER



## OFFICIAL SUPPLIER

