



FISU
WORLD
UNIVERSITY
GAMES
WINTER



TECHNICAL HANDBOOK

Short Track

Version 05/12/2024

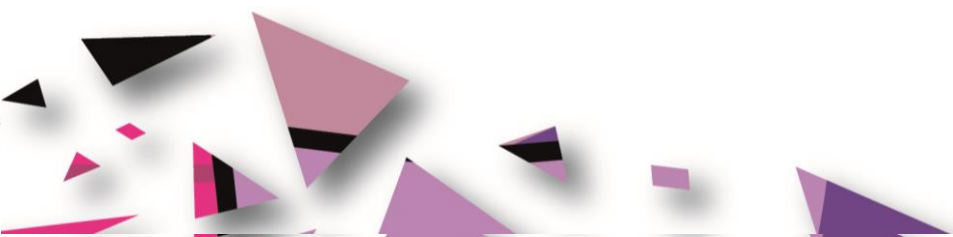


TORINO, ITALY
13 - 23 JANUARY 2025

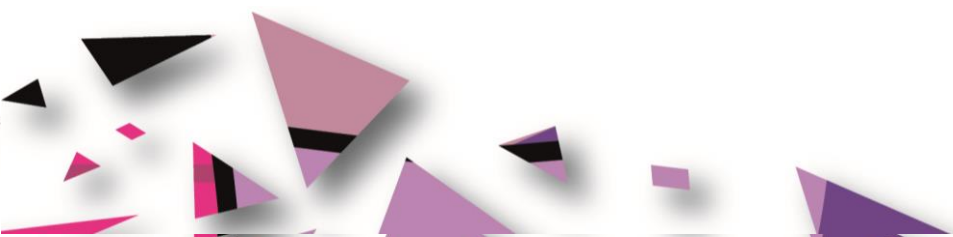


TABLE OF CONTENTS

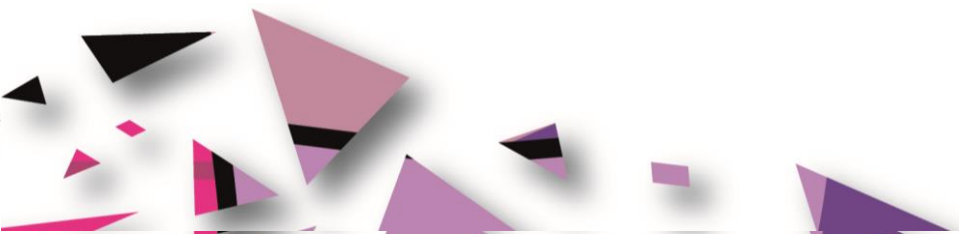
1. Welcome Messages	1
2. Abbreviations.....	3
3. FISU International Technical Committee.....	5
4. General Information	5
4.1 Torino 2025 FISU World University Games.....	5
4.2 Competition Schedule.....	5
4.3 Opening and Closing Ceremonies.....	5
5. Competition Information.....	6
5.1 Technical Committee	6
5.2 International Technical Officials	6
5.3 Competition Structural Chart.....	7
5.4 Technical Regulations	8
5.4.1 Entries.....	8
5.4.2 Protest and Appeal	9
5.5 Competition Format.....	9
5.5.1 500 m W/M	9
5.5.2 1000 m W/M.....	9
5.5.3 1500 m W/M.....	9
5.5.4 3000 m Relay W	10
5.5.5 5000 m Relay M.....	10
5.5.6 2000 m Mixed Team Relay.....	10
5.6 Competition and Training Venue Information.....	11
5.6.1 General Information	11
5.6.2 Venue Layouts.....	11
5.7 Day-by-Day Schedule.....	11
5.7.1 Ceremonies.....	12
5.7.2 Training.....	13
5.7.3 General Technical Meeting.....	13
5.8 Equipment	13
5.8.1 Short Track Speed Skating Equipment.....	13
5.8.2 Track Conditions/Padding System	13
5.9 Doping Control.....	13



5.9.1 List of Prohibited Substances	14
5.9.2 Testing	14
5.9.3 Doping Control Stations	14
5.9.4 Therapeutic Use Exemptions (TUE)	15
5.9.5 Structure	15
5.10 Mascot and Medal Ceremonies.....	15
5.10.1 Mascot Ceremony	15
5.10.2 Medal Ceremony	16
5.10.3 Diploma of Honor.....	16
5.10.4 Diploma of FISU Record	17
5.11 Media Interviews	17
5.12 Sport Information Services.....	17
5.12.1 Online Sport Information Services.....	17
5.12.2 Sport Information at the Venue.....	17
5.12.3 Sport Information Distribution.....	18
6. Service Information	18
6.1 Accreditation.....	18
6.2 Radio Frequency Control	18
6.3 Insurance and Responsibilities	19
6.4 Transportation	19
6.4.1 Transportation System for Athletes and Team Officials (TA).....	19
6.4.2 Transportation Services for All Accredited Stakeholders – Transport Connect (TC)	19
6.5 Food and Beverages.....	20
6.5.1 Mealtimes.....	20
6.5.2 FNB Services at the Competition Venues	20
6.6 Medical Services.....	20
6.6.1 Conditions of Medical Assistance.....	20
6.6.2 Medical Support Structure	21
6.6.3 Medical Support in the Accommodation Sites.....	21
6.6.4 Dedicated Hospitals and Specialized Medical Facilities.....	21
6.7 Weather	21
7. OC Contacts	21
8. Appendices.....	22
8.1 Venue Layouts.....	22



8.2 Geographical Overview Venues	23
--	----



1. WELCOME MESSAGES

Dear delegates,

Dear friends and colleagues,

The 2025 FISU World University Games Winter in Torino, Piemonte (Italy) is drawing inexorably closer. "Torino" is a name that has a unique and incomparable significance for FISU. Not only was FISU founded in this beautiful city in 1949, but Torino also hosted the first ever Summer Universiade ten years later in 1959. Moreover, Primo Nebiolo, FISU President from 1961 to 1999, also contributed to strongly linking Torino and FISU together.

Having held the Winter Olympics in 2006, Torino also hosted the Winter Universiade in 2007. Now, we are all preparing to return to the birthplace of both FISU and the Universiade, but also to the mountains in Sestriere, host of the 1966 Winter Universiade and an important cluster for the upcoming Torino 2025 FISU World University Games Winter.

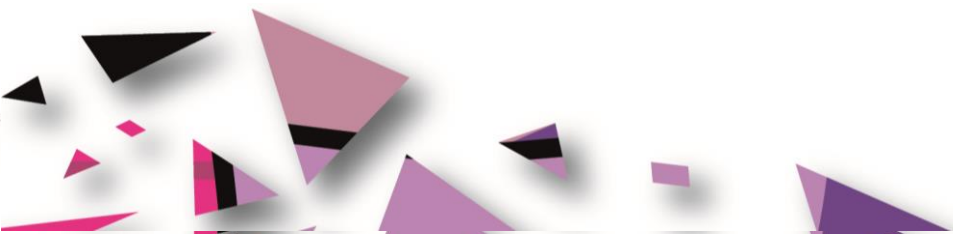
I am very grateful to the Organising Committee of the Torino 2025 FISU Games Winter, but also to the political, academic and sport authorities who are making this student sporting highlight - set from 13 to 23 January 2025 - possible. It is thanks to their unwavering commitment and belief in the values of university sport that these FISU Games will take place.

I wish you all a smooth and successful preparation for your mission at the Torino 2025 FISU World University Games Winter and look forward to welcoming you to the opening ceremony in Torino on 13 January 2025.



Leonz EDER

President of the International University Sports Federation



*Dear Delegates,
Dear Student-Athletes, Coaches, Dignitaries, and Presidents of Member Federations,
Dear all,*

It is a great pleasure for me to present the Technical Handbook for the Torino 2025 FISU World University Games Winter.

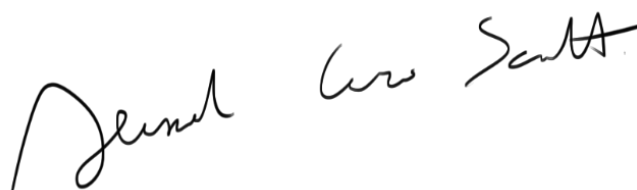
This handbook contains all the necessary information about the Games and the technical aspects for each sport, serving as a comprehensive guide for all participants and delegations involved.

The Torino 2025 FISU World University Games Winter will feature a total of 11 sports, divided into snow and ice disciplines.

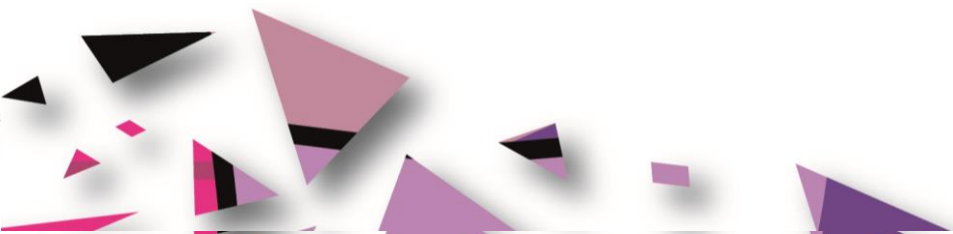
However, what fills me with particular pride is that, for the first time in the history of the FISU World University Games Winter, we will be hosting two parasports competitions: Para Alpine Skiing and Para Cross-Country Skiing.

This event promises the perfect setting for high-level competition across six stunning areas of Piedmont, an Italian region with a rich history in both sports and science: Turin, Sestriere, Bardonecchia, Pragelato, Pinerolo, and Torre Pellice.

I am looking forward to welcoming the big family of the Winter University Sports in Piedmont in just a few months' time!

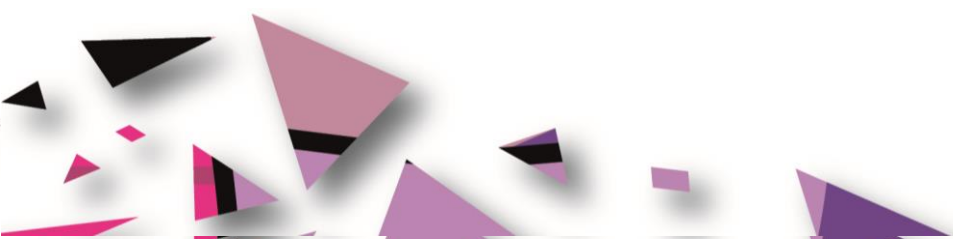
A handwritten signature in black ink, reading "Alessandro Sciretti". The signature is written in a cursive, flowing style.

*Alessandro Sciretti
President of Torino 2025 FISU World University Games*

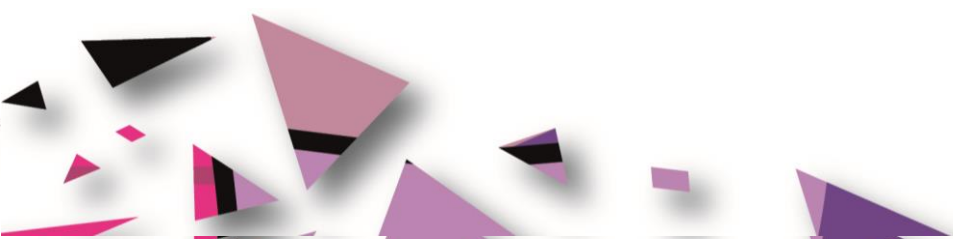


2. ABBREVIATIONS

Abbreviation	Name in full
ADAMS	Anti-Doping Administration and Management System
ATH	Athletes
C	Coaches
CIC	FISU International Control Committee
CM	Competition Manager
CMI	FISU International Medical Committee
CT	FISU Technical Committee
DbD	Day-by-Day Schedule
DNF	Did Not Finish
DNQ	Did Not Qualify
DNS	Did Not Start
DSQ	Disqualified
EC	FISU Executive Committee
F	Final
FISG	Italian Ice Sports Federation
FISU	International University Sports Federation
FNB	Food & Beverage
FoP	Field of Play
GTM	General Technical Meeting
HoD	Head of Delegation
IF	International Federation
IR	International Referee
ISU	International Skating Union
ITC	FISU International Technical Committee
ITO	International Technical Official
J	Judges



MAC	Main Accreditation Centre
MED	Medical Services
MR	Minimum Requirements
MTR	Mixed Team Relay
MXZ	Mixed Zone
NADO	National Anti-Doping Organization
NF	National Federation
NTO	National Technical Official
NUSF	National University Sports Federation
OC	Organizing Committee
PCR	Press Conference Room
PHY	Physiotherapy Room
PLV	Palavela
REL	Relay
SF	Semi-Final
SID	Sports Information Desk
STK	Short Track Speed Skating
T&S	Timing and Scoring
TCC	FISU Technical Committee Chair
TCM	Team Captain's Meeting
TD	Technical Delegate
TL	Team Leader
TO	Technical Official
TUE	Therapeutic Use Exemptions
VM	Venue Manager
WADA	World Anti-Doping Agency



3. FISU INTERNATIONAL TECHNICAL COMMITTEE

Position	First Name	Last Name	Country
FISU TCC ALP/PARA-ALP	Matjaz	KRANJC	SLO
FISU TCC BTH	Ondrej	RYBAR	CZE
FISU TCC CCS/PARA-CCS	Zofia Stefania	KIEPINSKA	POL
FISU TCC CUR	Scott	ARNOLD	CAN
FISU TCC FRS	Magnus	FERRY	SWE
FISU TCC FSK	Dingding	LIU	CHN
FISU TCC IHO	Reto	BERTOLOTI	SUI
FISU TCC IHO	Igor	NEMECEK	SVK
FISU TCC SBD	Ola	SUNDEKVIST	SWE
FISU TCC SMO	Zuzana	RYCHLIKOVÀ	SVK
FISU TCC SOR	Markku	VAUHKONEN	FIN
FISU TCC STK	So Hee	KIM	KOR

4. GENERAL INFORMATION

4.1 Torino 2025 FISU World University Games

Date: 13 - 23 January 2025

Location: Turin, Italy

Sports Program: 11 sports, 96 Medal Events

Venues: 11 venues

4.2 Competition Schedule

[Download | Torino 2025 \(wugtorino2025.com\)](http://wugtorino2025.com)

4.3 Opening and Closing Ceremonies

Opening Ceremony



Date: 13 January 2025

Location: Inalpi Arena, Corso Sebastopoli 123, 10134 Torino TO

Beginning of Ceremony: 19:30

Closing Ceremony

Date: 23 January 2025

Location: Piazzetta Reale (Torino)

Beginning of Ceremony: 20:00

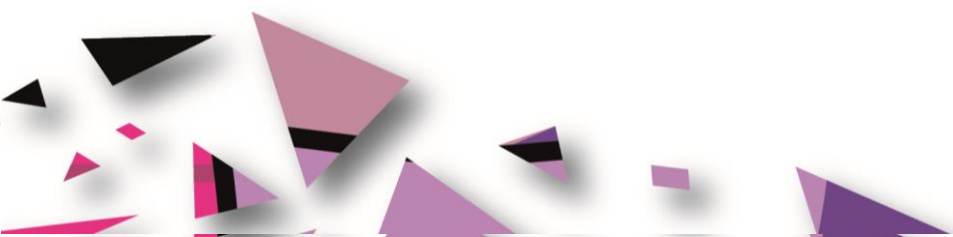
5. COMPETITION INFORMATION

5.1 Technical Committee

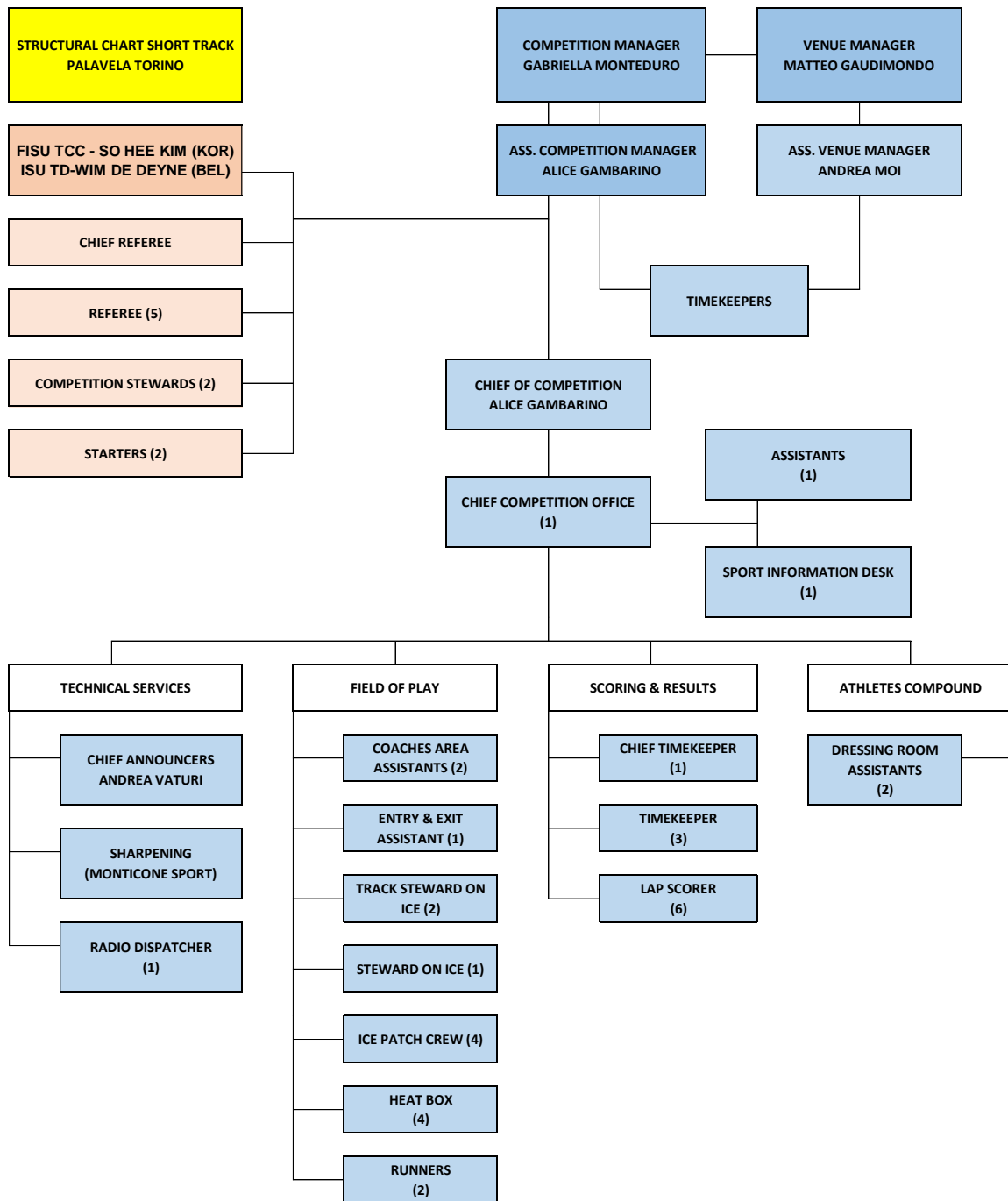
Technical Committee Chair	So Hee KIM (KOR)
ISU Technical Delegate	Wim DE DEYNE (BEL)
Chief Competition/Manager	Gabriella MONTEDURO (ITA)
Competition Manager Assistant	Alice GAMBARINO (ITA)

5.2 International Technical Officials

Chief Referee	Beáta PÁDÁR (HUN)
Referees	Alessandro MAURI (ITA)
	Yun Sook LEE (KOR)
	Alexandra VALACH (SVK)
	Daniel John FIORENZA (USA)
	Maximilian MARKGRAF (GER)
Starter (M)	Roman PAWŁOWSKI (POL)
Starter (W)	Taku SASAKI (JPN)
Competitors' Stewards	Stéphane LARRIERE (FRA)
	Baohai SHAN (CHN)



5.3 Competition Structural Chart



5.4 Technical Regulations

The Short Track Speed Skating events will be organized in accordance with the most recent technical regulations of the International Skating Union (ISU), except when specifically amended by these regulations or by the FISU World University Games International Technical Committee (FISU Games ITC).

The program and duration of the competitions will be fixed by the FISU Executive Committee in agreement with the Organizing Committee and the FISU Games ITC. In principle, the program will last five (5) days maximum and will include the following events:

Men	Women
500m	500m
1000m	1000m
1500m	1500m
5000m Relay	3000m Relay
Mixed Team Relay	

5.4.1 ENTRIES

Each country is authorized to enter a maximum of six (6) athletes per gender (total 12 athletes).

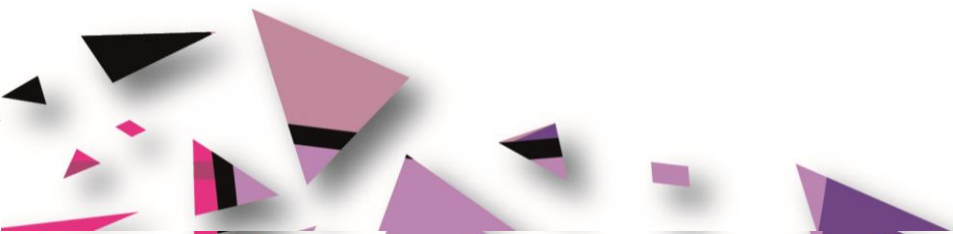
In each event, each country may enter:

- Individual events: maximum three (3) athletes (per gender)
- Team events:
 - Men's Relay: maximum one (1) team per country, each team composed of maximum five (5) M (four (4) skaters and one (1) substitute).
 - Women's Relay: maximum one (1) team per country, each team composed of maximum five (5) W (four (4) skaters and one (1) substitute).
 - Mixed Team Relay: maximum one (1) team per country, each team composed of two (2) W and two (2) M (two (2) skaters and one (1) substitute per gender).

If necessary, the number of athletes may be reduced.

At the first General Technical Meeting (Team Captain's Meeting), the Head of Delegation or his/her representative shall confirm and sign the official list of athletes.

Only with an accreditation card approved by the FISU International Control Committee (CIC) can an athlete be considered for the draw of a starting list and be entitled to participate in any of the competitions.



5.4.2 PROTEST AND APPEAL

Protests based on an alleged violation of rules may be lodged provided that they are not excluded by this or any other rule. The referee decides upon all protests.

Protests must be filed with the referee in writing and within the stated time limit. At the same time the protest is filed, CHF 100, or equivalent in the currency of the Organizing Committee, must be deposited with the referee (ISU Rule 123).

No protests are allowed against a referee's or starter's decision (ISU Rule 123.4. B). Any sport disciplinary situation, which cannot be satisfactorily resolved by the Sport Technical Committee (TC) and the sport specific disciplinary regulations, will be reported to the FISU Disciplinary Committee for further action to be taken. Where appropriate, a report will also be sent to ISU.

5.5 Competition Format

5.5.1 500 M W/M

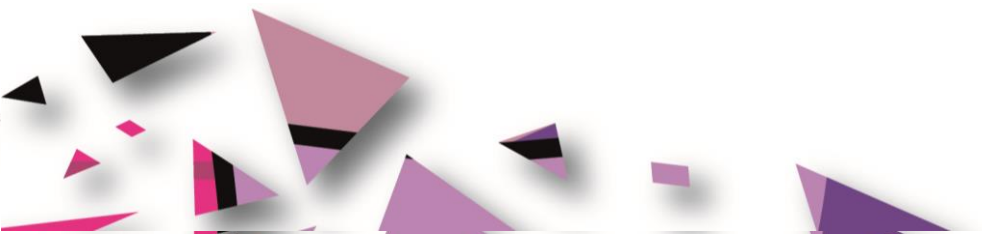
- Single Distance Format
- Depending on number of entries:
 - Preliminary heats
 - Heats
 - Quarter-finals
 - Semi-finals
 - Final A/B

5.5.2 1000 M W/M

- Single Distance Format
- Depending on number of entries:
 - Preliminary heats
 - Heats
 - Quarter-finals
 - Semi-finals
 - Final A/B

5.5.3 1500 M W/M

- Single Distance Format
- Depending on number of entries:
 - Heats
 - Quarter-finals
 - Semi-finals
 - Final A/B



The number of skaters per race is limited and must be scheduled as follows:

	500m	1000m	1500m
Quarter-Finals	5	5	/
Semi-Finals	5	5	7
Finals	5	5	7

For the distances, race winners will qualify to move forward to the next round. Additional finish places will qualify to move directly forward to the next round as specified on the Qualification Table for the Distance 2023-2024 as a reference.

In the event that the directly qualified skaters and advanced skaters, if any, do not fill up the scheduled number of skaters in the next round, the fastest skaters in the next finishing positions may be added to the next round or final (first with all the skaters in the next direct finishing position, then subsequent, if needed).

This Competition uses the “0 False Start” procedure.

5.5.4 3000 M RELAY W

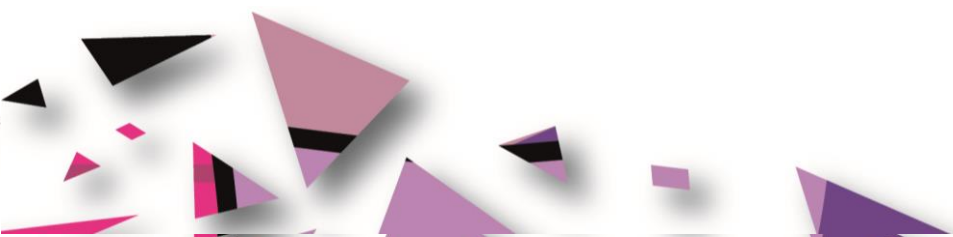
- Relay will follow the rules for ISU competition
- Teams consist of four (4) competitors with one (1) substitute
- Depending on number of entries:
 - Quarter-finals
 - Semi-finals
 - Finals A and B (Final B skated first, then Final A)

5.5.5 5000 M RELAY M

- Relay will follow the rules for ISU competition
- Teams consist of four (4) competitors with one (1) substitute
- Depending on number of entries:
 - Quarter-finals
 - Semi-finals
 - Finals A and B (Final B skated first, then Final A)

5.5.6 2000 M MIXED TEAM RELAY

- Relay will follow the rules for ISU competition



- Teams consist of four (4) competitors made up of two (2) women and two (2) men and one (1) substitute per gender
- Depending on number of entries:
 - Quarter-finals
 - Semi-finals
 - Final A/B

5.6 Competition and Training Venue Information

5.6.1 GENERAL INFORMATION

OC VENUE MANAGER		Matteo GAUDIMUNDO	
OC ASS. VENUE MANAGER		Andrea MOI	
Venue	Function	Location	Distance from accommodation to venue
Palavela	Training/ Competition	45.0234565, 7.6665966	20 min, 8 Km

5.6.2 VENUE LAYOUTS

See Appendix, Section 8.1.

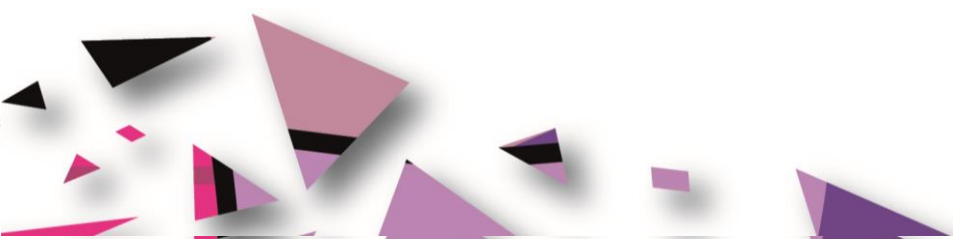
5.7 Day-by-Day Schedule

Categories:

Training / Course Inspection
Competition
Reserve Day
Technical Meeting / Draw
Mascot Ceremony
Medal Ceremony
Social Event

Some changes may be applied.

Sport	Time	Event	Location
-------	------	-------	----------

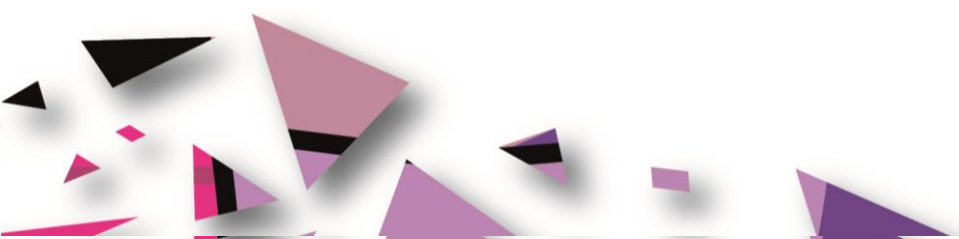


10 Jan	ALL	17:00	19:00	FISU International Technical Committee (ITC) Meeting	FISU Hotel Torino Majestic
13 Jan	ALL	19:00		Opening Ceremony	Inalpi Arena (TO)
18 Jan	STK	21:00	23:00	Unofficial Training	Palavela
19 Jan	STK	10:30	15:30	Unofficial Training	Palavela
20 Jan	STK	09:00	17:00	Official Training	Palavela
20 Jan	STK	17:00		General Technical Meeting	Palavela
21 Jan	STK	14:00	17:10	1500m W/M	Palavela
21 Jan	STK	17:20	19:00	Mixed Team Relay QF/SF, 3000m Relay W QF, 5000m Relay M QF	Palavela
21 Jan	STK	19:10	19:20	Medal Ceremony 1500m W/M	Palavela
22 Jan	STK	14:00	17:30	500m W/M	Palavela
22 Jan	STK	17:40	17:55	Mixed Team Relay Finals	Palavela
22 Jan	STK	18:10	18:40	3000m Relay W SF, 5000m Relay M SF	Palavela
22 Jan	STK	19:00	19:30	Medal Ceremony 500m W/M, Mixed Team Relay	Palavela
23 Jan	STK	11:00	14:10	1000m W/M	Palavela
23 Jan	STK	14:20	14:55	3000m Relay W F, 5000m Relay M F	Palavela
23 Jan	STK	15:10	15:50	Medal Ceremony 1000m W/M 3000m Relay W 5000m Relay M	Palavela
23 Jan	STK	20:00		Closing Ceremony	Piazzetta Reale (TO)

5.7.1 CEREMONIES

Mascot and Medal Ceremonies for men and women will be held at the competition venue. For more information, please refer to the Day-by-Day Schedules in the previous section.

For more information, please refer to Section 5.10.



5.7.2 TRAINING

On the 18th and 19th of January 2025, unofficial training will take place and on the 20th of January official training will take place. Teams will be assigned Training Times taking into consideration of team arrivals and team size. Coaches may contact the Sport Manager to ask for a preferred time and we will accommodate as best as we can.

5.7.3 GENERAL TECHNICAL MEETING

The 1st General Technical Meeting (GTM/1st Team Leader's Meeting) will be held at the Palavela on the 20th January 2025 at 17:00. Team leaders/coaches must attend the 1st General Technical Meeting.

At the 1st General Technical Meeting, the Head of Delegation or his/her representative shall confirm and sign the official list of competitors. Any further details and clarifications, which are not yet described in the Technical Handbook, will be communicated at the respective General Technical Meetings.

5.8 Equipment

5.8.1 SHORT TRACK SPEED SKATING EQUIPMENT

The purpose of the Special Regulations and Technical Rules for Short Track Speed Skating is to regulate all aspects of materials relating to Short Track Speed Skating competitions. It is based on the binding nature of the Special Regulations and Technical Rules for Short Track Speed Skating and is part of those rules. All equipment used by athletes is governed by the ISU Special Regulations and Technical Rules for Short Track Speed Skating which can be found on the following website: <https://isu.org/short-track/rules/stk-constitution/file>

5.8.2 TRACK CONDITIONS/PADDING SYSTEM

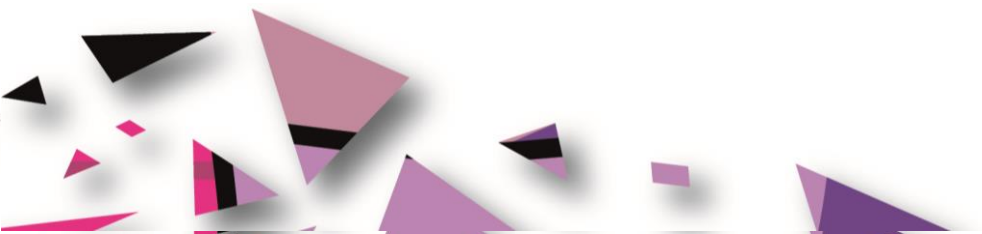
The track for Palavela's ice rink is 30x60m.

Protective padding will be completely new, following and respecting ISU technical rules.

The standard track will be laid out 111.12 meters to the lap.

5.9 Doping Control

Doping Control will be carried out in accordance with the WADA World Anti-Doping Code and FISU regulations: [Download | Torino 2025 \(wugtorino2025.com\)](#)



5.9.1 LIST OF PROHIBITED SUBSTANCES

The actual list of prohibited substances and methods is defined in accordance with WADA international standards. National University Sports Federations will be responsible for ensuring that their delegations, namely athletes, are made aware of the actual version of the prohibited list. For the current WADA list of prohibited substances and methods, please refer to the following website: www.wada-ama.org.

5.9.2 TESTING

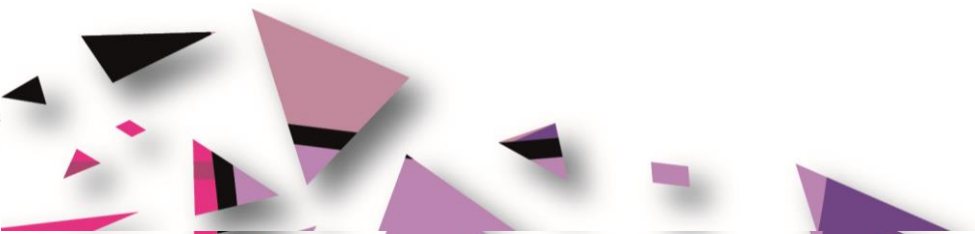
The required number of samples will be selected during the “in-competition” and “out-of-competition” periods in accordance with the Test Distribution Plan. “In-competition” is defined as the period commencing 12 hours before a competition in which the athlete is scheduled to participate through to the end of such competition and the sample collection process related to such competition. “Out-of-competition” is defined as any doping control which is not “in-competition.” During the Torino 2025 FISU World University Games, athletes can be tested at any time without prior notice. Urine and/or blood samples will be collected in compliance with the WADA International Standard for Testing and Investigations (ISTI). A paperless system will be used for the sample collection. The testing will be conducted by Doping Control Officers (DCO) from an anti-doping organization accredited by WADA. Testing will be conducted under the supervision of the FISU International Medical Committee. The samples collected at competition venue doping control stations will be transported to the WADA approved laboratory in Italy. All results will be sent to the Chairman of the FISU International Medical Committee and entered into the ADAMS system. In the event of a violation of FISU Anti-Doping Rules, the responsibility for processing the results lies with the FISU International Medical Committee.

In the event of setting a national record, doping testing of the athlete is carried out at the expense of his/her National University Sports Federation.

5.9.3 DOPING CONTROL STATIONS

Doping control stations are located at each sports venue or in close proximity. The main doping control station is located in the Host City of Turin. All doping control stations will be marked with signs, including signage directing athletes to the stations. After the completion of the doping control procedure, all samples collected at each doping control station will be delivered to the central doping control station together with the necessary support documentation (doping control protocols) for further registration in the ADAMS system. All samples will be packaged and sent to the WADA accredited anti-doping laboratory in accordance with international standards. All the information concerning the doping control program during the Torino 2025 FISU World University Games is confidential according to WADA and FISU requirements. When visiting a doping control station, athletes are required to have accreditation cards.

The doping control station for Short Track Speed Skating athletes will be located at Palavela.



- o Doping control stations for out of competition controls and outside venue operating hours will be located at (LOCATION)

5.9.4 THERAPEUTIC USE EXEMPTIONS (TUE)

Torino 2025 FISU World University Games participants who require Therapeutic Use Exemption (TUE) must make an appropriate request to the National Anti-Doping Organization or International Federation before participation in the Torino 2025 FISU Games. The World Anti-Doping Agency International Standard for TUE will be applied in this case. Every athlete who uses a substance or a method included in the list of prohibited substances is obliged to be in possession of a completed TUE form of the established standard from the moment of arrival until the departure from the Village after the Closing Ceremony of the Torino 2025.

If there is a need for the use of a prohibited substance or a prohibited method for medical reasons after the opening of the Torino 2025 FISU World University Games, an athlete must submit a request for TUE to the FISU International Medical Committee as a matter of urgency (antidoping@fisunet). The responsibility for completing the TUE form and submitting an application to the FISU International Medical Committee lies with the delegation physician.

If the delegation does not have its own physician, the athlete shall submit a request for TUE with the attachment of medical documentation confirming the fact of providing him/her with emergency medical treatment to the FISU International Medical Committee (antidoping@fisunet).

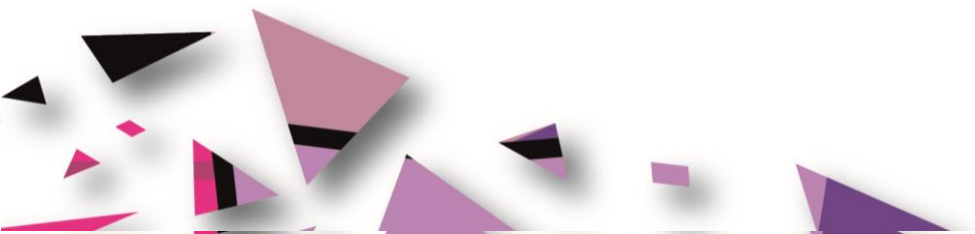
5.9.5 STRUCTURE

Chair of FISU International Medical Committee	Dr. Dusan HAMAR (SVK)
OC Head of Medical Services	Dr. Gianluca GHISELLI (ITA)
OC Head of Doping Control	Dr. Francesco LEONELLI (ITA)

5.10 Mascot and Medal Ceremonies

5.10.1 MASCOT CEREMONY

Mascot Ceremonies will be combined with Medal Ceremonies for Short Track Speed Skating right after the competition, or at the end of the competition day.



5.10.2 MEDAL CEREMONY

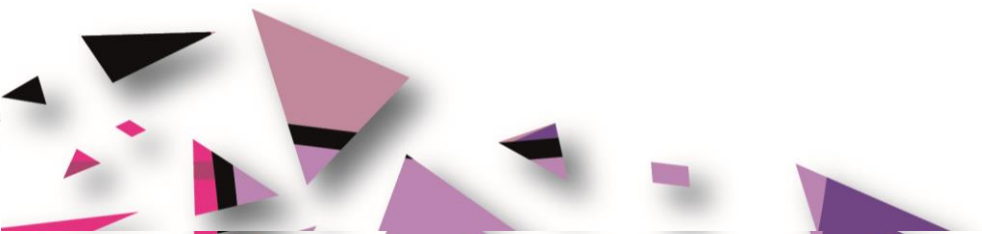
- The official language for the Medal Ceremonies will be English.
- The medalists from each event must attend the Medal Ceremonies. In the event that a medalist is unable to attend, the medal is delivered to an official of the relevant delegation. He/she must be dressed in the delegation's official outfit. He/she must not mount the podium but stand behind it. The official awarding the medal will hand the medal and mascot over the podium. During the FISU Anthem, the delegation official stands behind the podium.
- In the event all medalists cannot be present, the Medal Ceremony will be postponed.
- If an athlete or team is disqualified, the medal(s) shall be returned to FISU.

During the Medal Ceremony:

- The athletes are not allowed to bring any national flag or any other national, cultural or religious symbol on the podium.
- The national flags of the first three (3) medalists will be raised and the only anthem played will be the FISU Anthem, the Gaudeamus Igitur.
- During the playing of the FISU Anthem and the raising of the flags, athletes shall face the flags and conduct themselves in a dignified manner at all times. No national anthem is played during the ceremony.
- Athletes are expected to take off their caps and sunglasses when receiving the medal and keep items in hand throughout the ceremony (i.e., playing of the FISU Anthem and raising of the flags).
- Athletes, authorities and accompanying persons are required to face the flags while they are being raised and the FISU Anthem is being played.
- The medalists are expected to attend the ceremony in the uniforms they wore at the Opening Ceremony but are also allowed to attend the official ceremony wearing sport uniforms when the ceremony takes place immediately following the competition.
- After the medals are awarded, athletes must remain in the awarding area for photos on the podium with medals.
- In order to get the best photos, athletes should follow the recommendations of photographers.

5.10.3 DIPLOMA OF HONOR

- The athletes ranked one (1) to eight (8) will receive a Diploma of Honor.
- For team events, each team member, from teams ranked one (1) to six (6), will receive a personal Diploma of Honor mentioning his/her name and the team ranking.
- Diplomas of Honor are not distributed at the Medal Ceremony. They are sent in PDF format to the Head of Delegation or an appointed representative of each delegation prior to departure at the end of the event.



5.10.4 DIPLOMA OF FISU RECORD

Diploma of FISU Record: to athletes having broken a FISU Record. (the diploma is prepared and provided by FISU to the athlete after the event.

If an athlete or team is disqualified, the diploma(s) shall be returned to FISU.

5.11 Media Interviews

Venue Media Centers for media representatives are organized at all Torino 2025 FISU World University Games competition sites.

At the end of a competition, all athletes must leave the Field of Play through the mixed zone where brief interviews will be held. Every athlete/coach should be ready to communicate with media representatives upon their request. Team representatives should be prepared to provide athletes with a warm jacket or a blanket prior to entering the mixed zone.

A volunteer from the Venue Media Center will coordinate the exchanges between athletes/coaches and media.

Support for translation in English will be provided during the mixed zone interviews. If an athlete/coach does not speak this language, they should invite their team interpreter to the mixed zone.

Media conferences are held at the beginning and the end of the Torino 2025 FISU World University Games.

5.12 Sport Information Services

5.12.1 ONLINE SPORT INFORMATION SERVICES

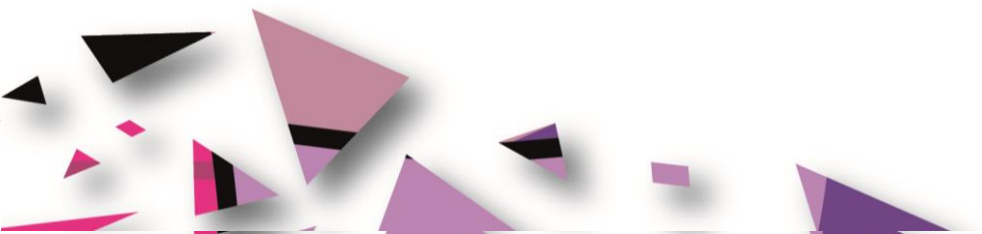
Online information will be available on the Torino 2025 FISU World University Games' official website: <https://wugtorino2025.com>

In addition, more detailed information and publications for teams can be accessed under the following link: <https://wugtorino2025.com/delegation-services/>

5.12.2 SPORT INFORMATION AT THE VENUE

A Sport Information Desk (SID) will be located at each venue, providing most recent information related to the competitions and receiving requests from the team representative(s).

The Sport Information Desk will operate from 13 January 2025 until the last day of competition in accordance with the competition and training schedules (one (1) hour before and after the events).



5.12.3 SPORT INFORMATION DISTRIBUTION

Information	Online	Venue	Delegation Accommodation
Competition Schedule	+	+	+
Start List/ Result List	+	+	+
Change to Schedule	+	+	+
Special Announcements	+	+	+
Weather Information	+	+	+
Medal Table	+		
Technical Handbook	+		
FISU Regulations	+		
Other Information		+	+
Answer to Team Questions		+	+

6. SERVICE INFORMATION

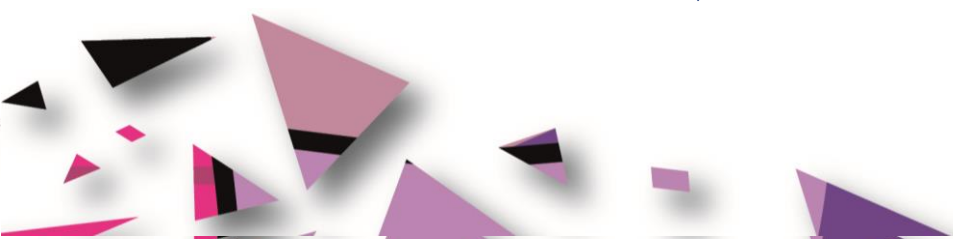
6.1 Accreditation

For the Accreditation procedure please refer to the HoD Manual.

IMPORTANT: A personalized accreditation card with a photo, name and function of the cardholder carries information about the access rights and privileges available to him/her. Upon arrival, the accreditation card, equipped with a QR-code, enables members of delegations a 24-hour temporary access to the Torino 2025 FISU World University Games venues in accordance with the access rights on the accreditation card. The temporary access does not allow participation in the competition. After CIC's approval, the accreditation card will be fully activated.

6.2 Radio Frequency Control (To be updated)

At all Torino 2025 FISU World University Games venues, any use of radio frequencies (e.g., walkie-talkies, radio stations, wireless cameras, Wi-Fi access points, wireless microphones, FM-transmitters, and any other wireless equipment) requires a temporary radio license from the Ministry of Economic Development (Ministero dello Sviluppo Economico, MISE) and must ensure it doesn't conflict with the Italian emergency services, including the police, EMTs (Emergency Medical Technicians), and other first responders.



If you are planning to utilize any of the items noted above which require bandwidth on the frequency spectrum, please fill out the Frequency Form (to be provided at a later stage) and send it to technology@wugtorino2025.com.

The Organising Committee will be registering a range of available Radio Frequencies starting from September 2024. We will then provide the frequencies available to each team/country to determine if their existing equipment will work within the range available in the Torino region.

Your wireless devices will be registered and checked by the frequency-organizer. You will receive a confirmation if the devices can be registered in Italy.

By the end of November, you will receive the frequencies allocated to you.

Important: Every frequency user is responsible for submitting registration details for all their wireless devices accordingly and in a timely manner.

Fees/costs (tbc) for temporary radio licenses must be paid to the Organizing Committee by the delegation or frequency users applying for an Italian radio license.

6.3 Insurance and Responsibilities

Participating countries must adhere to the insurance requirements and conditions as stipulated in Section 5.6 of the Torino 2025 FISU World University Games Regulations.

6.4 Transportation

6.4.1 TRANSPORTATION SYSTEM FOR ATHLETES AND TEAM OFFICIALS (TA)

The transportations system for athletes and team officials will provide transport services from 18th to 23rd January 2025. Routes in the transportation system for athletes and official delegation members are marked with the abbreviations “TA” (Transport Athletes). Vehicles will be equipped with placards indicating route number for the individual and team sports and spectating athletes.

Route Number	XXX
Sport	Short Track Speed Skating
Route	Olimpia Village to Palavela
Distance to the Venue	8 Km
Time	20 min

6.4.2 TRANSPORTATION SERVICES FOR ALL ACCREDITED STAKEHOLDERS – TRANSPORT CONNECT (TC)

Scheduled buses are provided between Torino and the competition venues for all accredited stakeholders from 18th - 23rd January 2025. Buses will operate in accordance with the



competition schedule. All athletes and officials, regardless of their delegation and sport, will have access to the bus transportation system TC.

Detailed information will be available in the Transportation Guide.

6.5 Food and Beverages

This information will be included in the next version of the Technical Handbook.

6.5.1 MEALTIMES

- Breakfast: 5:30-9:30
- Lunch: 11:00-15:00
- Snack: 16:00-17:00
- Dinner: 18:30-22:30
- Late snack: 23:00-00:00

The dining hall hours of operations will be adjusted to accommodate the Delegation's Competition Schedule for early morning or late-night competitions.

6.5.2 FNB SERVICES AT THE COMPETITION VENUES

An athletes' lounge will be providing snacks one (1) hour prior to the competition until one (1) hour after the competition. This service is provided from the start of the first official training.

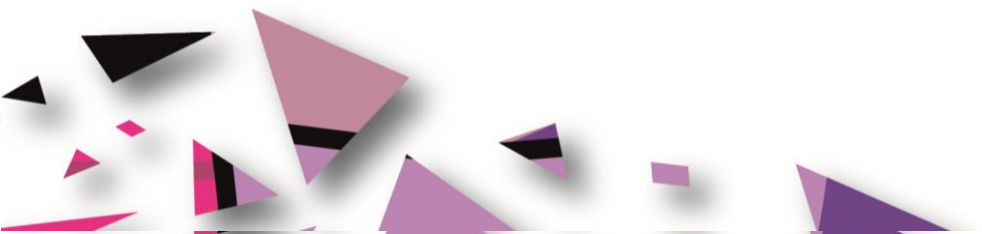
6.6 Medical Services

6.6.1 CONDITIONS OF MEDICAL ASSISTANCE

During the Torino 2025 FISU World University Games, in the event of life-threatening diseases and conditions or in any situations requiring urgent medical treatment, emergency medical assistance is provided to all client groups from 8-25 January 2025. Individuals that intend to arrive earlier or leave later must arrange for their own adequate travel insurance to cover medical costs. Immediate (except for emergency) and planned medical care is provided based on:

Immediate (except for emergency) and planned medical care is provided based on:

- an obligatory medical insurance agreement
- a paid medical service agreement
- a voluntary health insurance agreement
- health insurance



6.6.2 MEDICAL SUPPORT STRUCTURE

- Mobile medical crews in the Field of Play of the competition venues
- Ambulance crews at the competition venues
- Dedicated hospitals and specialized medical facilities
- Medical stations at not competition venues as hotel and villages.

*Please refer to the Medical Services Guide for more details.

6.6.3 MEDICAL SUPPORT IN THE ACCOMMODATION SITES

Details can be found in the Medical Services Guide. Information to be defined at a later stage.

6.6.4 DEDICATED HOSPITALS AND SPECIALIZED MEDICAL FACILITIES

Additional information and locations of all hospitals in the region will be available in the Medical Service Guide.

6.7 Weather

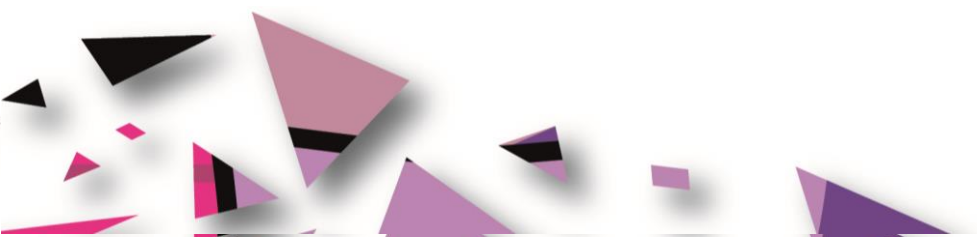
For weather information visit the following link:

<https://www.arpa.piemonte.it/>

Otherwise, weather information can be also picked up at Information Desk at each of the village as well as online and at other locations, including on the Games website.

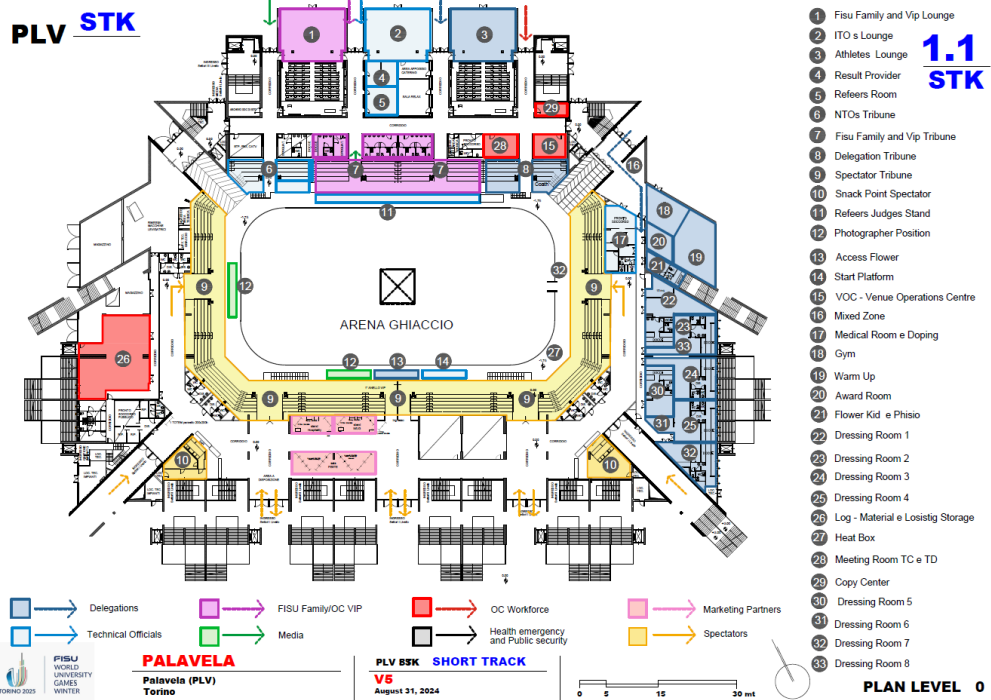
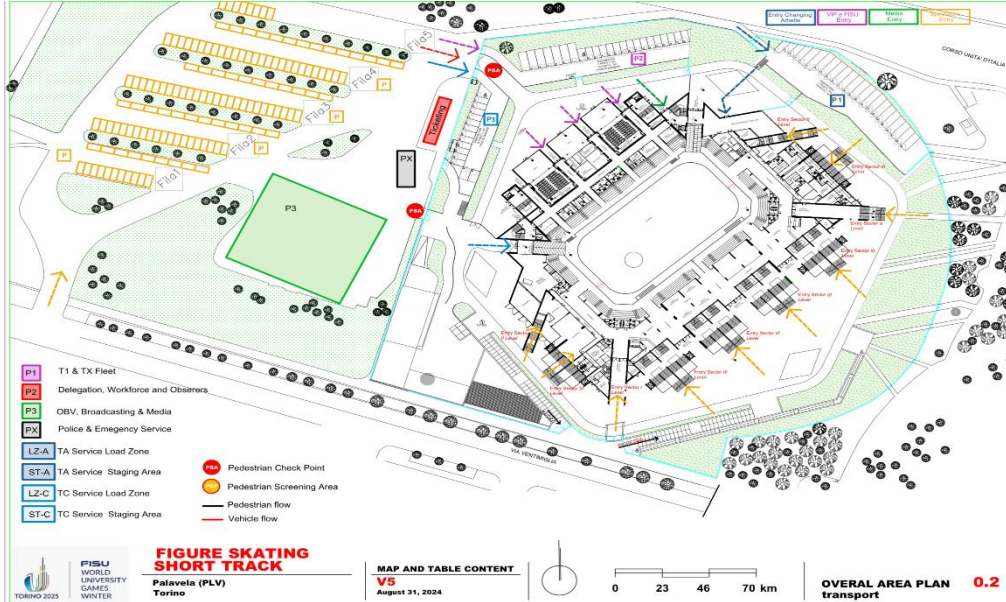
7. OC CONTACTS

Title	Email
Accreditation	accreditationtorino2025@wugtorino2025.com
Sport Department	sport@wugtorino2025.com
Sport Entries	sportentries@wugtorino2025.com
Delegation Services	delegationservices@wugtorino2025.com
ITO Service Desk	itoservices@wugtorino2025.com

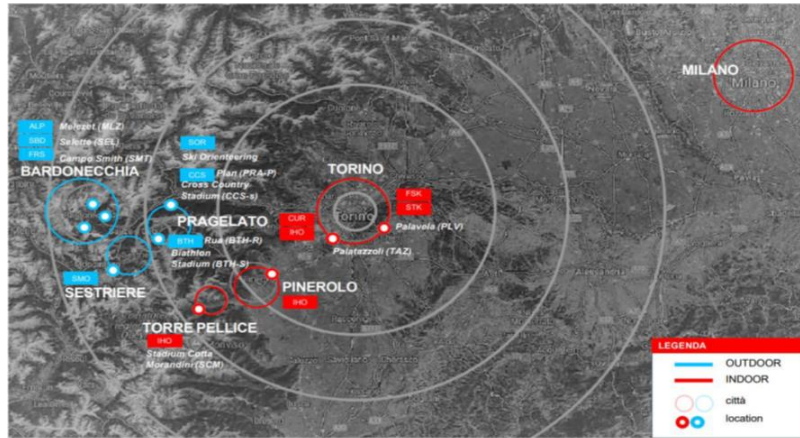


8. APPENDICES

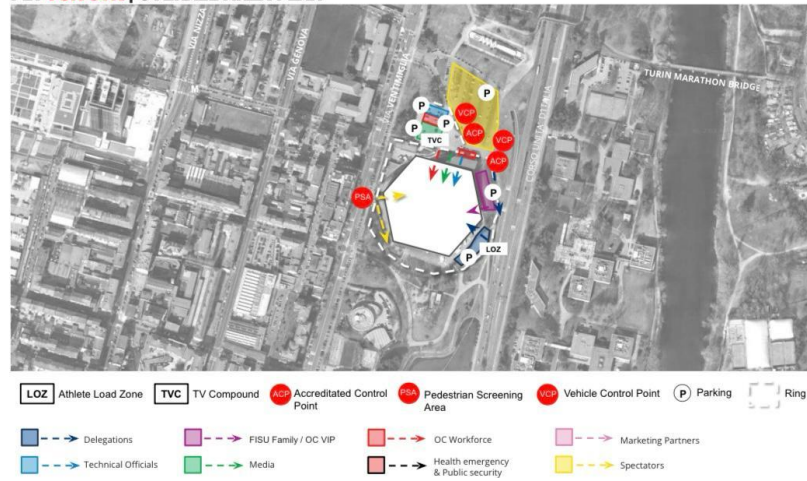
8.1 Venue Layouts



8.2 Geographical Overview Venues



PLV FSK STK | OVERALL AREA PLAN



INSTITUTIONAL PARTNER

Evento organizzato con il supporto di



Ministro per lo Sport e i Giovani



Con il patrocinio di



MAIN SPONSOR



FISU PARTNER



MEDIA PARTNER



OFFICIAL SUPPLIER

