

Torino 2025 FISU World University Games Winter Medical Services Guide

INTRODUCTION

The Torino 2025 FISU World University Games will be held from 11 January to 23 January 2025 at various venues near Torino, Italy.

The Torino Organizing Committee has prepared a Medical Services Guide for the 32nd FISU World University Games Winter under the supervision of FISU International Medical Committee and according to the regulations of FISU Games Winter Competitions and Minimum Requirements.

The aim of the guide is to give information on medical services for participant delegations and staff members.

Torino Organizing Committee will provide the following services to meet the needs of athletes, referees, FISU family members, spectators, press members, volunteers and medical service staff during the 32nd World University Games Winter:

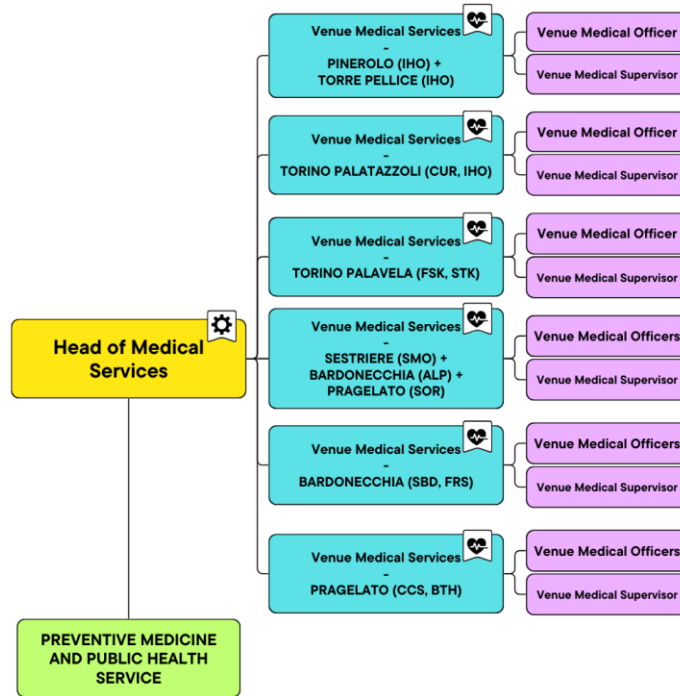
- Set up medical stations with health care staff at the venues and during the opening and closing ceremonies.
- 24 hours emergency service. Those who require this service will be transferred in ambulances from the different venues, OC Medical Centre or hotels to the hospitals.
- Monitor any potential infectious diseases and maintain environmental disinfection throughout the whole FISU Games Winter.
- Manage health services.

The primary goal of medical care and health check for Torino 2025 FISU Games Winter is providing efficient rescue and treatment for patients on time and timely and adequate treatment of those seriously injured and the prevention of epidemics.



1. ORGANIZATIONAL STRUCTURE OF THE MEDICAL SERVICE DEPARTEMENT

Medical Services organization for the Torino 2025 FISU Games



2. MEDICAL SUPPORT STRUCTURE

- 2.1. Medical stations for athletes and spectators at the competition venues.
- 2.2. Mobile medical crews in the competition zones of the competition venues.
- 2.3. Ambulance crews at the competition venues during official training and competition.
- 2.4. Medical Centre near competition venues.
- 2.5. Medical Stations at non-competition venues, in each cluster of accommodation.
- 2.6. Dedicated hospitals and specialized medical facilities.
- 2.7. Team Physicians.

2.1 Medical Stations for Athletes And Spectators at the Competition Venues

Medical stations will provide immediate medical services and assistance for athletes, ITOs, officials, FISU family members, media members, volunteers and spectators. The medical stations are basic first aid stations, for light medical issues, and can assist with transportation for any moderate to severe medical issues.

Medical stations will open **one (1) hour prior to the start of competitions and official trainings and close one (1) hour after they finish.**

In all official training and competition venues during the Games, an ALS ambulance with a doctor, a nurse and a medical transport technician will be available 60 minutes before and after competition. In case of evacuation, they will be replaced.

In the event of any injuries at the competition venues, competition participants will be provided with the required amount of ice.

Competition Venues list:

- Torino – Palatazzoli
- Torino – Palavela
- Bardonecchia
- Sestriere
- Pragelato
- Torre Pellice – Stadio del Ghiaccio
- Pinerolo – Stadio del Ghiaccio



2.2 Mobile Medical Crews in the Competition Zones of the Competition Venues

Mobile Medical Crews for immediate medical assistance in the competition zones are trained in accordance with the international requirements for holding sports competitions.

Official training and competitions will be staffed by a physician at the Medical Station.

All sports will have assistance from Emergency Medical Technicians, and Alpine Skiing, Freestyle & Freeski and Snowboard events will have specialized Ski Patrol.

Mobile Medical Crews will start their work **one (1) hour prior to the start of competitions and official trainings and close one (1) hour after they finish.**

2.3 Ambulance Crews at the Competition Venues During Official Training and Competition

During official training and competitions, there will be at least one ambulance on duty with general medical crews at all competition venues.

Ambulance crews will be available on the venue at least one hour prior to the start of competitions and finish one hour after they end.

Medical support during the Opening and Closing Ceremonies depends on the number of spectators.

2.4 Medical Centre Near Competition Venues

Near Competition venues there will be two different Medical Centres available, located in Bardonecchia and Sestriere/Pragelato. After the first medical examination at the Medical Stations athletes may be transferred to the Medical Centre for comprehensive medical assessment and care if necessary. The Medical Centre are open 24 hours/day during official trainings and competitions.



2.5 Medical Stations at Non-Competition Venues, In Each Cluster Of Accommodation

The whole territory of the event has been divided into Cluster Areas and each accommodations' site has been assigned to a Cluster Area.

Each Cluster Area will have its own Medical Station.

The Medical Station will be staffed with Medical Doctor, Nurse and one or more First Responder Volunteers.

After the first medical examination at the Medical Stations, athletes may be transferred to the Medical Centre for comprehensive medical assessment and care, or directly to one of the Hospitals if their health conditions require it.

A hotline for non-emergent, general medical questions will be available: the number will be available at each accommodation.

Whenever athletes, ITOs, officials, FISU family members, media members and volunteers staying at the different accommodations need medical assistance and they cannot go to the Medical Station of Cluster Area themselves, they should phone the emergency ambulance service: 112. For any call to the emergency service, present yourself as "**member of the Torino 2025 FISU Games**".

Clusters and Medical Centre

All Clusters from 08 to 25 January 2025, hours of operation will be **operative 24/7**:

- Olympia University Residence – Torino
- Claretta University Residence – Grugliasco
- Olympic Village – Bardonecchia
- Hotel Torre – Cluster Pragelato/Sestriere
- Hotel Barrage – Cluster Pinerolo/Torre Pellice

2.6 Dedicated Hospitals and Specialized Medical Facilities

Specialized medical assistance will be provided by hospitals and specialized facilities to accredited client groups of the Torino 2025 FISU World University Games. The hospitals are open 24 hours/day for emergencies and a reserved fast track has been set up specifically.

hospitals list:

- Ospedale Civile “E. Agnelli” – Pinerolo
- Ospedale degli Infermi – Rivoli
- Ospedale Civile – Susa
- Ospedale Martini – Torino
- Ospedale Maria Vittoria – Torino
- Ospedale San Giovanni Bosco – Torino



2.7 Team Physicians

Team physicians accompanying the delegations will have accreditation to ensure unhindered access to their athletes and delegation members during the competitions in accordance with international federation regulations. The team physicians are authorized to accompany their athletes during medical evacuation to hospitals or specialized medical facilities, to be present at diagnostic examinations and to make decisions regarding the athlete's participation or exemption from the competitions. The team physicians will be provided with a special medical room in accordance with the size of the delegation.

All medical members (doctor, nurse, physiotherapist and so on) of any delegation will work under the direct responsibility of the delegation's Head Medical Officer.

Management. Should the team physicians have any questions during the event regarding medical support, they should contact the Venue Medical Officer competition venues on duty or Torino 2025 FISU World University Games Winter Head of Medical Services and Doping Control.

The first meeting for medical personnel of the national delegations will take place at 12 am on Sunday 12 January at the Residenza Universitaria Olimpia - Torino.

The purpose of the meetings is to explain the procedure of medical support at competition and non-competition venues, operation of the Main Medical Centre in Turin, hospitals, and to introduce the Venue Medical Officer for each competition venues.

3. MEDICINES AND MEDICAL EQUIPMENT

3.1 Import and Export of Medicines and Medical Equipment

Athletes and teams participating in the Torino 2025 FISU World University Games Winter can import certain medical items and equipment in their accompanied baggage. Such items are normally imported in the baggage following the official team physician.

Major drugs such as those otherwise considered as controlled substances are not acceptable for entry by international team physicians.

International team physicians should have a list prepared of all medical supplies and if asked at the time of entry/inspection be prepared to present the list to the inspecting Officer. Medications for personal use should be imported by the individual who will be taking that medication, accompanied by a prescription for that medication, and only enough medication for the intended personal use.

3.2 Delivery of Medicines and Equipment to the Venues

Medical equipment may be delivered to the venue by the Team Physician. There may not be adequate storage for medical equipment to be left at the venue.

4. CONDITIONS OF MEDICAL ASSISTANCE

During the Torino 2025 FISU World University Games Winter, in the event of life-threatening diseases and conditions or in any situations requiring urgent medical treatment, emergency medical assistance is provided to all client groups from 8 to 25 January 2025. Individuals that intend to arrive earlier or leave later must arrange for their own adequate travel insurance to cover medical costs. Immediate (except for emergency) and planned medical care is provided based on:

- an obligatory medical insurance agreement.
- a paid medical service agreement.
- voluntary health insurance agreement.
- Health insurance

Long-term health problems or medical interventions known prior to arrival to the Torino 2025 FISU World University Games Winter are not included.

5. PHARMACIES

Medications normally under prescription will be directly available at competition venues (in Medical Station) or accommodations (in Medical Room) for dispensing without any further documentation. Please refer the health providers at each different venue

Please, contact Medical Team for any other necessity.

Emergency Rooms in Hospitals will have necessary medications for urgent care.

6. SANITATION AND DISEASE CONTROL

Torino Organizing Committee has prepared detailed plans for observation and control with the purpose of medical services, sanitation, and for the prevention of food poisoning and epidemic.

Sanitation controllers will be sent to provide the security of the accommodation, of the competition venues and other points for the sale of food & beverages. Food sanitation and hygiene control will be applied as follow:

- Insect eradication and disinfection
- Epidemiological surveillance and observations related to public health
- Sanitation information broadcasting

7. PROCEDURE FOR EMERGENCY SERVICES

For all Emergency Services people should call 112 and the 112 operator will dispatch a local ambulance.