

TECHNICAL HANDBOOK

Ski Mountaineering

Version 04/01/2025



TORINO, ITALY
13 - 23 JANUARY 2025



TABLE OF CONTENTS

| | |
|---|----|
| 1. Welcome Messages | 1 |
| 2. Abbreviations..... | 3 |
| 3. FISU International Technical Committee..... | 4 |
| 4. General Information | 5 |
| 4.1 Torino 2025 FISU World University Games..... | 5 |
| 4.2 Competition Schedule..... | 5 |
| 4.3 Opening and Closing Ceremonies..... | 5 |
| 5. Competition Information..... | 5 |
| 5.1 Technical Committee | 5 |
| 5.2 International Technical Officials | 6 |
| 5.3 Competition Structural Chart..... | 6 |
| 5.4 Technical Regulations | 7 |
| 5.4.1 Entries..... | 7 |
| 5.4.2 Jury Composition | 7 |
| 5.4.3 Protest and Appeal | 8 |
| 5.5 Competition Format..... | 8 |
| 5.5.1 Sprint race..... | 8 |
| 5.5.2 Vertical Race..... | 9 |
| 5.5.3 Mixed Relay | 9 |
| 5.6 Competition and Training Venue Information..... | 9 |
| 5.6.1 General Information | 9 |
| 5.6.2 Venue Layouts | 10 |
| 5.6.3 Slopes Technical Data | 10 |
| 5.7 Day-by-Day Schedule..... | 10 |
| 5.7.1 Ceremonies..... | 11 |
| 5.7.2 Training..... | 11 |
| 5.7.3 Reserve Days | 12 |
| 5.7.4 General Technical Meeting | 12 |
| 5.8 Equipment | 12 |
| 5.8.1 Competition Uniforms & Equipment | 12 |
| 5.8.2 Waiting Room | 12 |
| 5.8.3 Waxing Room..... | 12 |



| | |
|---|----|
| 5.9 Doping Control..... | 13 |
| 5.9.1 List of Prohibited Substances | 13 |
| 5.9.2 Testing | 13 |
| 5.9.3 Doping Control Stations | 14 |
| 5.9.4 Therapeutic Use Exemptions (TUE) | 14 |
| 5.9.5 Structure | 14 |
| 5.10 Mascot and Medal Ceremonies..... | 15 |
| 5.10.1 Mascot Ceremony | 15 |
| 5.10.2 Medal Ceremony | 15 |
| 5.10.3 Diploma of Honor | 16 |
| 5.11 Media Interviews | 16 |
| 5.12 Sport Information Services | 16 |
| 5.12.1 Online Sport Information Services..... | 16 |
| 5.12.2 Sport Information at the Venue..... | 17 |
| 5.12.3 Sport Information Distribution..... | 17 |
| 6. Service Information | 17 |
| 6.1 Accreditation..... | 17 |
| 6.2 Radio Frequency Control | 18 |
| 6.3 Insurance and Responsibilities | 18 |
| 6.4 Transportation | 19 |
| 6.5 Food and Beverages..... | 19 |
| 6.5.1 Mealtimes..... | 19 |
| 6.5.2 FNB Services at the Competition Venues | 20 |
| 6.6 Medical Services..... | 20 |
| 6.6.1 Conditions of Medical Assistance..... | 20 |
| 6.6.2 Medical Support Structure | 20 |
| 6.6.3 Medical Support in the Accommodation Sites..... | 20 |
| 6.6.4 Dedicated Hospitals and Specialized Medical Facilities..... | 21 |
| 6.7 Weather | 21 |
| 7. OC Contacts | 21 |
| 8. Appendices..... | 22 |
| 8.1 Venue Layouts..... | 22 |
| 8.1.1 Overview Slopes..... | 22 |
| 8.1.2 Venue Layouts | 24 |



| | |
|--|----|
| 8.2 Geographical Overview Venues | 25 |
|--|----|



1. WELCOME MESSAGES

Dear delegates,

Dear friends and colleagues,

The 2025 FISU World University Games Winter in Torino, Piemonte (Italy) is drawing inexorably closer. "Torino" is a name that has a unique and incomparable significance for FISU. Not only was FISU founded in this beautiful city in 1949, but Torino also hosted the first ever Summer Universiade ten years later in 1959. Moreover, Primo Nebiolo, FISU President from 1961 to 1999, also contributed to strongly linking Torino and FISU together.

Having held the Winter Olympics in 2006, Torino also hosted the Winter Universiade in 2007. Now, we are all preparing to return to the birthplace of both FISU and the Universiade, but also to the mountains in Sestriere, host of the 1966 Winter Universiade and an important cluster for the upcoming Torino 2025 FISU World University Games Winter.

I am very grateful to the Organising Committee of the Torino 2025 FISU Games Winter, but also to the political, academic and sport authorities who are making this student sporting highlight - set from 13 to 23 January 2025 - possible. It is thanks to their unwavering commitment and belief in the values of university sport that these FISU Games will take place.

I wish you all a smooth and successful preparation for your mission at the Torino 2025 FISU World University Games Winter and look forward to welcoming you to the opening ceremony in Torino on 13 January 2025.



Leonz EDER

President of the International University Sports Federation



Dear Delegates,

Dear Student-Athletes, Coaches, Dignitaries, and Presidents of Member Federations,

Dear all,

It is a great pleasure for me to present the Technical Handbook for the Torino 2025 FISU World University Games Winter.

This handbook contains all the necessary information about the Games and the technical aspects for each sport, serving as a comprehensive guide for all participants and delegations involved.

The Torino 2025 FISU World University Games Winter will feature a total of 11 sports, divided into snow and ice disciplines.

However, what fills me with particular pride is that, for the first time in the history of the FISU World University Games Winter, we will be hosting two parasports competitions: Para Alpine Skiing and Para Cross-Country Skiing.

This event promises the perfect setting for high-level competition across six stunning areas of Piedmont, an Italian region with a rich history in both sports and science: Turin, Sestriere, Bardonecchia, Pragelato, Pinerolo, and Torre Pellice.

I am looking forward to welcoming the big family of the Winter University Sports in Piedmont in just a few months' time!

A handwritten signature in black ink, reading "Alessandro Sciretti". The signature is fluid and cursive, with the first name "Alessandro" written in a larger, more prominent script than the last name "Sciretti".

Alessandro Sciretti

President of Torino 2025 FISU World University Games



2. ABBREVIATIONS

| Abbreviation | Name in Full |
|--------------|--|
| ADAMS | Anti-Doping Administration and Management System |
| CIC | FISU International Control Committee |
| CM | Competition Manager |
| CMI | FISU International Medical Committee |
| CT | FISU Technical Committee |
| DbD | Day by Day Schedule |
| DNF | Did Not Finish |
| DNS | Did Not Start |
| DSQ | Disqualified |
| EC | FISU Executive Committee |
| FISU | International University Sports Federation |
| FNB | Food & Beverage |
| GTM | General Technical Meeting |
| HoD | Head of Delegation |
| IF | International Federation |
| ISMF | International Ski Mountaineering Federation |
| ITC | International Technical Committee |
| ITO | International Technical Official |
| JP | Jury President |
| NADO | National Anti-Doping Organization |
| NF | National Federation |
| NR | National Referee |
| NTO | National Technical Official |
| NUSF | National University Sports Federation |
| MR | Mixed Relay |
| RJ | Race Jury |



| | |
|------|------------------------------|
| OC | Organizing Committee |
| SES | Sestriere |
| SID | Sports Information Desk |
| SR | Sprint |
| TCC | Technical Committee Chair |
| TD | Technical Delegate |
| TDA | Technical Delegate Assistant |
| TCM | Team Captain's Meeting |
| TO | Technical Official |
| TP | Time Points |
| TUE | Therapeutic Use Exemptions |
| VR | Vertical Race |
| WADA | World Anti-Doping Agency |

3. FISU INTERNATIONAL TECHNICAL COMMITTEE

| Position | First Name | Last Name | Country |
|-------------------------|----------------|------------|---------|
| FISU TCC ALP / PARA-ALP | Matjaz | KRANJC | SLO |
| FISU TCC BTH | Ondrej | RYBAR | CZE |
| FISU TCC CCS / PARA-CCS | Zofia Stefania | KIEPINSKA | POL |
| FISU TCC CUR | Scott | ARNOLD | CAN |
| FISU TCC FRS | Magnus | FERRY | SWE |
| FISU TCC FSK | Dingding | LIU | CHN |
| FISU TCC IHO | Reto | BERTOLOTTI | SUI |
| FISU TCC IHO | Igor | NEMECEK | SVK |
| FISU TCC SBD | Ola | SUNDEKVIST | SWE |
| FISU TCC SMO | Zuzana | RYCHLIKOVÀ | SVK |
| FISU TCC SOR | Markku | VAUHKONEN | FIN |
| FISU TCC STK | So Hee | KIM | KOR |



4. GENERAL INFORMATION

4.1 Torino 2025 FISU World University Games

Date: 13 - 23 January 2025

Location: Turin, Italy

Sports Program: 11 sports, 90 medal events

Venues: 11 venues

4.2 Competition Schedule

https://wugtorino2025.com/wp-content/uploads/2024/11/competition_schedule.pdf

4.3 Opening and Closing Ceremonies

Opening Ceremony

Date: 13 January 2025

Location: Inalpi Arena, Corso Sebastopoli, 123, 10134 Torino TO

Beginning of Ceremony: 19:30

Closing Ceremony

Date: 23 January 2025

Location: Piazzetta Reale (Torino)

Beginning of Ceremony: 20:00

5. COMPETITION INFORMATION

5.1 Technical Committee

| | |
|--------------------------------|-------------------------|
| FISU Technical Committee Chair | Zuzana RYCHLIKOVA (SVK) |
| ISMF Technical Delegate | Stefano MOTTINI (ITA) |
| Assistant Technical Delegate | Baptiste FAVRE (FRA) |

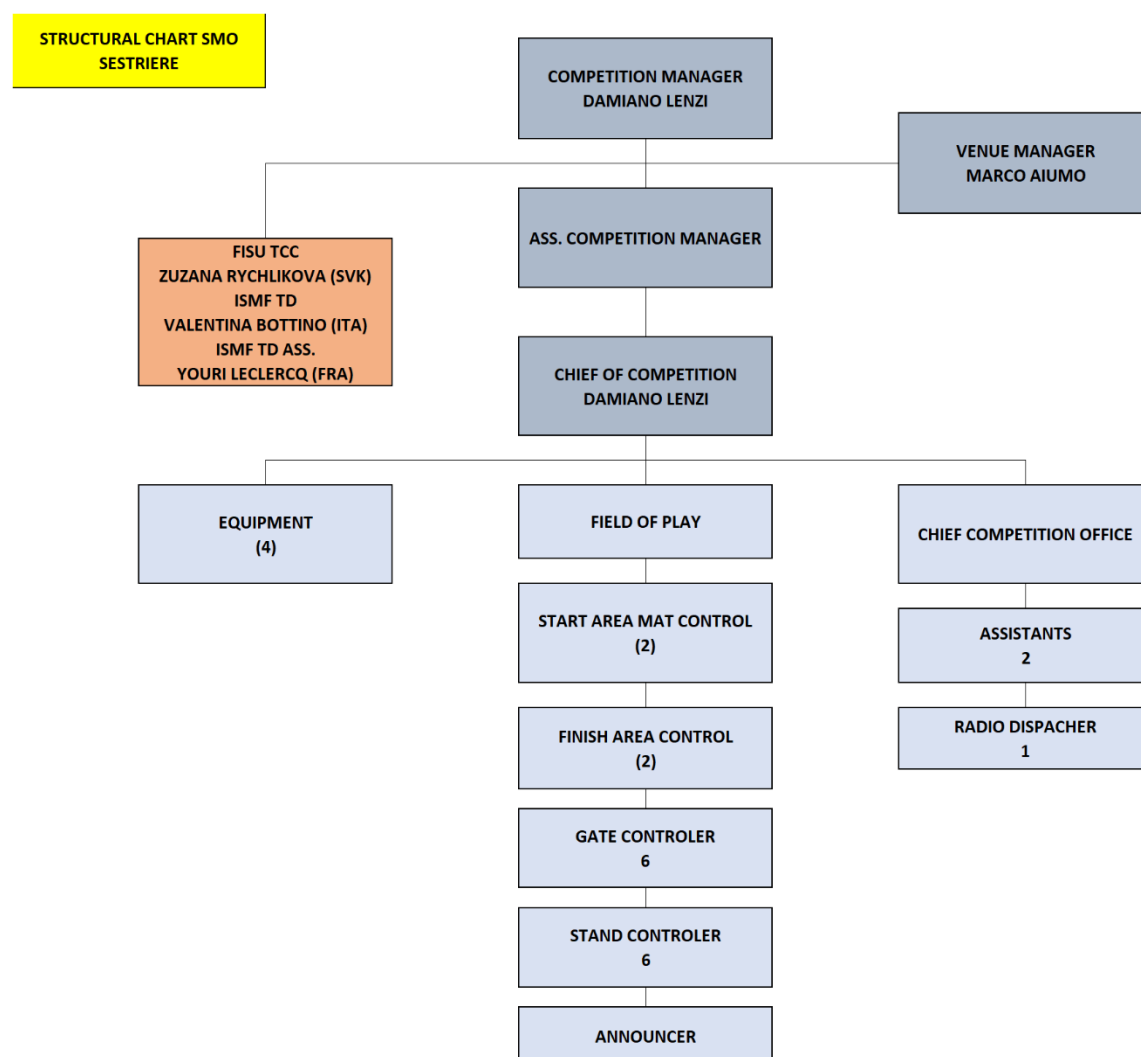


| | |
|---|----------------------|
| Competition Manager / Chief Competition | Damiano LENZI (ITA) |
| Chief Course | Damiano LENZI (ITA) |
| Race Secretary | Monica BORGARO (ITA) |

5.2 International Technical Officials

| | |
|----------------------------|-------------------------|
| ISMF International Referee | Valentina BOTTINO (ITA) |
| Video Assistant Referee | Youri LECLERCQ (FRA) |

5.3 Competition Structural Chart



5.4 Technical Regulations

The Ski Mountaineering events will be organised in accordance with the most recent Rules and Guidelines of the International Ski Mountaineering Federation (ISMF), except when specifically amended by these regulations or by the FISU Games International Technical Committee (FISU Games ITC).

The programme and duration of the competitions will be fixed by the FISU Executive Committee in agreement with the Organising Committee and the FISU Games ITC. In principle, the programme will last 4 days and will include the following events (2 or 3):

| Men | Women |
|------------------|---------------|
| Sprint Race | Sprint Race |
| Vertical Race | Vertical Race |
| Mixed Relay Race | |

5.4.1 ENTRIES

Each country is authorised to enter a maximum of 8 athletes per gender (total 16 athletes).

In each event, each country may enter:

- Individual events: maximum 6 athletes (per gender)
- Team events:
 - Mixed Relay Race: maximum 2 team per country composed of 1 W and 1 M.

Only athletes with an active ISMF licence are allowed to participate in each Ski Mountaineering event.

At the first General Technical Meeting, the Head of Delegation or his/her representative shall confirm and sign the official entry list of athletes.

Only with an accreditation card approved by the FISU International Control Committee (CIC) can an athlete be considered for the draw of a starting list and be entitled to participate in any of the competitions.

5.4.2 JURY COMPOSITION

For all events (men and women), the Jury must be nominated with the following members:

- ISMF International Referee/President of the Technical Jury (FISU Technical Committee Chair nominated by FISU)
- ISMF Technical Delegate
- ISMF Referee nominated by ISMF – Right to vote



- Chief of Race (nominated by Organising Committee)
- ISMF VAR Operator

All Jury members must be able to communicate with the Organising Committee and with all Jury members by radio during the competitions in English.

Connecting Coach: The Jury has the right to nominate a Connecting Coach at the Technical Committee's Meeting who will work together with the Jury and the other coaches but will not be a Jury member.

5.4.3 PROTEST AND APPEAL

Any protest of a sport or disciplinary nature must reach the Jury according to the regulations laid down by the ISMF. Such protest must be accompanied by a deposit in cash of CHF 100 or equivalent in the currency of the Organizing Committee. This deposit will be returned if the protest is upheld.

Each Head of Delegation or his/her deputy is authorized to lodge an appeal against the decision of the Jury. This appeal must be submitted in writing to the Jury of Appeal or competent authority in accordance with the FISU regulations. Any decision of the Jury of Appeal or equivalent authority of a sport is final and must be reported immediately to the Head of Delegation of the country concerned.

Any sport disciplinary situation which cannot be satisfactorily resolved by the Sport Technical Committee (TC) and the sport-specific disciplinary regulations will be reported to the FISU Disciplinary Committee for further action to be taken. Where appropriate, a report will also be sent to ISMF.

5.5 Competition Format

5.5.1 SPRINT RACE

Short track with ascent, descent, and a part on foot with skis attached to backpack, which will take place in qualifying phases, heats, semifinals and final. Race held by heats of 6 athletes from heats to final. The positive ascent of 60m maximum with racing time between 2min30- 3min30s for the best M/W.

The qualification phase with individual start and 20 seconds start interval followed by heats / semi-finals and finals per 6 athletes per heats: lucky loser from heats to semifinals and from semifinals to finales.

Final composition: the two first athletes from each semifinal and two lucky losers with the two best times from both semifinals.

Athletes during the heats must be present in the pre-start tent 3 minutes before their start time. If an athlete does not arrive, that racer is not allowed to access to the start line and is prohibited from starting the heat.



If an athlete, during the qualification does not arrives at least 1min before their starting time to the start line, that athlete is not allowed to start.

Best time / position wins.

5.5.2 VERTICAL RACE

A single ascent on skis. No part takes place on foot with skis on backpack. Vertical race is possible off-piste but only along a sheltered track with a minimum width of 2 meters. The average gradient should be at least 15%.

The area after the finish line must be completely flat or with a gentle slope, and at least 6m wide.

The positive ascent will be approximately 300m.

5.5.3 MIXED RELAY

The Mixed Relay race covers 4 loops, each with 2 ascents and 2 descents. Each athlete has to cover the loop twice alternately with the teammate.

The qualification phase with individual start and 30 seconds start interval for each member of team 1M/1W. The sum of the qualification time defines the start position for Final A or Final B

Composition of team (1 man & 1 woman).

All members of the team must be present in the pre-start tent 3 minutes before the start for the media presentation of the team.

The starting position is chosen according to the qualification time.

The best team will be able to choose its start line position first.

Final A composition with a maximum of 12 teams (quota of one team per country).

Final B with a minimum of 6 teams (no quota per country) and with a maximum of 12 teams.

If there is a final B it will take place before final A.

5.6 Competition and Training Venue Information

5.6.1 GENERAL INFORMATION

| OC VENUE MANAGER | | Firstname FAMILYNAME (XXX) | |
|------------------|----------|----------------------------|--------------------------------------|
| Venue | Function | Location | Distance from accommodation to venue |



| | | | |
|-----------|---------------------------|-------------------------|-------------|
| Sestriere | Training / Competition | 44.9577715 6.8705295 | 11 km/12 km |
|-----------|---------------------------|-------------------------|-------------|

5.6.2 VENUE LAYOUTS

See Appendix, Section 8.1.

5.6.3 SLOPES TECHNICAL DATA

See Appendix, Section 8.1.1.

5.7 Day-by-Day Schedule

Categories:

| |
|--------------------------|
| Training/Inspection |
| Competition |
| Technical Meeting / Draw |
| Mascot Ceremony |
| Medal Ceremony |
| Social Event |
| Reserve day |

Some changes may be applied.

| | Sport | Time | | Event | Location | Gender |
|--------|-------|-------|-------|--|----------------------------------|--------|
| 10 Jan | ALL | 17:00 | 19:00 | FISU International Technical Committee (ITC) Meeting | FISU Hotel Torino Majestic | W/M |
| 13 Jan | ALL | 19:30 | | Opening Ceremony | Inalpi Arena (TO) | W/M |
| 15 Jan | SMO | 17:00 | 17:30 | Team Captains' Meeting (TCM) Draw | Via Lattea TCM Office | W/M |
| 16 Jan | SMO | 17:15 | 17:45 | Course Inspection | Sestriere | W/M |
| 16 Jan | SMO | 18:00 | 18:30 | Qualifications Sprint W/M | Sestriere | W/M |
| 16 Jan | SMO | 18:30 | 19:00 | Heets Sprint W/M | Sestriere | W/M |
| 16 Jan | SMO | 19:00 | 19:30 | Semi-Finals Sprint W/M | Sestriere | W/M |
| 16 Jan | SMO | 19:30 | 19:45 | Finals Sprint W/M | Sestriere | W/M |



| | | | | | | |
|--------|-----|-------|-------|---------------------------------|----------------------|-----|
| 16 Jan | SMO | 19:45 | 19:50 | Mascot Ceremony Sprint W | Sestriere | W |
| 16 Jan | SMO | 19:55 | 20:00 | Mascot Ceremony Sprint M | Sestriere | M |
| 16 Jan | SMO | 20:30 | 20:40 | Medal Ceremony Sprint W | Sestriere | W |
| 16 Jan | SMO | 20:40 | 20:50 | Medal Ceremony Sprint M | Sestriere | M |
| 17 Jan | SMO | 17:15 | 17:45 | Course Inspection | Sestriere | W/M |
| 17 Jan | SMO | 18:00 | 18:50 | Mixed Relay | Sestriere | W/M |
| 17 Jan | SMO | 18:50 | 19:00 | Mascot Ceremony Mixed Relay | Sestriere | W/M |
| 17 Jan | SMO | 19:20 | 19:30 | Medal Ceremony Mixed Relay | Sestriere | W/M |
| 18 Jan | SMO | | | Reserve Day | Sestriere | W/M |
| 19 Jan | SMO | 17:15 | 17:45 | Course Inspection | Sestriere | W/M |
| 19 Jan | SMO | 18:00 | 19:00 | Finals Vertical Race W | Sestriere | W |
| 19 Jan | SMO | 19:00 | 19:10 | Mascot Ceremony Vertical Race W | Sestriere | W |
| 19 Jan | SMO | 19:00 | 20:00 | Finals Vertical Race M | Sestriere | M |
| 19 Jan | SMO | 20:00 | 20:10 | Mascot Ceremony Vertical Race M | Sestriere | M |
| 19 Jan | SMO | 20:30 | 20:40 | Medal Ceremony Vertical Race W | Sestriere | W |
| 19 Jan | SMO | 20:40 | 20:50 | Medal Ceremony Vertical Race M | Sestriere | M |
| 23 Jan | ALL | 20:00 | | Closing Ceremony | Piazzetta Reale (TO) | W/M |

5.7.1 CEREMONIES

Mascot Ceremony will be held immediately following the conclusion of the competition.

Medal Ceremonies for men and women will be held at Sestriere: Medal Plaza. For more information, please refer to section 5.10.

5.7.2 TRAINING

Official training will be scheduled one day prior to the competition day. Earlier arrivals can make separate arrangements depending on snow and weather conditions.



5.7.3 RESERVE DAYS

The OC will do its best to hold all competitions on the scheduled days. However, under exceptional weather conditions the competitions may have to be postponed/rescheduled. One (1) reserve day is kept free, 18th January 2025.

5.7.4 GENERAL TECHNICAL MEETING

- The 1st General Technical Meeting (Team Captain's Meeting) will be held from 17:00 – 17:30 on 15th of January 2025 at Team Captain's Meeting Room in Sestriere – Gianni Agnelli building.
- The Head of Delegation or his/her representative (coach) must attend the 1st General Technical Meeting.
- At the 1st General Technical Meeting, the Head of Delegation or his/her representative shall confirm and sign the official list of athletes.

Any further details and clarifications which are not yet described in the Technical Handbook will be communicated at the respective Team Captain's Meetings (refer to the day-by-day schedule).

5.8 Equipment

5.8.1 COMPETITION UNIFORMS & EQUIPMENT

Clothing and equipment control will in principle follow ISMF rules. Equipment control will be carried out in respect of the recent ISMF technical regulations if no additional FISU rule is determined. Each competitor is responsible for the equipment that he/she uses. The term "competition equipment" encompasses all items of equipment which the competitor uses in competition. This includes clothing as well as apparatus with technical functions. The entire competition equipment forms a functional unit. All equipment used by athletes is governed by the ISMF.

5.8.2 WAITING ROOM

Only athletes have access, ideally some seats and tents shall be arranged.

5.8.3 WAXING ROOM

The Torino 2025 FISU World University Games will provide sport equipment storage and waxing rooms for the teams. All facilities are built and organised according to FISU and international requirements. Waxing rooms and cabins for Ski Mountaineering will be provided at the athlete's accommodations. Sections will be allocated to the respective nations and shared among their athletes.



The waxing rooms are equipped with special tables and equipment for preparing skis with lighting, several electric outlets, heating, ski racks and waste bins.

Each waxing area (for all relevant sports) will have an ample supply of 220v power, plug-ins and extensions.

The OC will NOT be providing power converters/transformers, waxing irons, vises, etc.

5.9 Doping Control

Doping Control will be carried out in accordance with the WADA World Anti-Doping Code and FISU regulations:

https://wugtorino2025.com/wp-content/uploads/2024/11/20240206_Torino-2025-FISU-Games-Regulations-Feb2024-1.pdf

5.9.1 LIST OF PROHIBITED SUBSTANCES

The actual list of prohibited substances and methods is defined in accordance with WADA international standards. National University Sports Federations will be responsible for ensuring that their delegations, namely athletes, are made aware of the actual version of the prohibited list. For the current WADA list of prohibited substances and methods, please refer to the following website: www.wada-ama.org.

5.9.2 TESTING

The required number of samples will be selected during the “in-competition” and “out-of-competition” periods in accordance with the Test Distribution Plan. “In-competition” is defined as the period commencing 12 hours before a competition in which the athlete is scheduled to participate through to the end of such competition, and the sample collection process related to such competition. “Out-of-competition” is defined as any doping control which is not “in-competition.” During the Torino 2025 FISU Games, athletes can be tested at any time without prior notice. Urine and/or blood samples will be collected in compliance with the WADA International Standard for Testing and Investigations (ISTI). A paperless system will be used for the sample collection. The testing will be conducted by Doping Control Officers (DCO) from the Italian Anti-Doping Agency (NADO), an anti-doping organization accredited by WADA. Testing will be conducted under the supervision of the FISU International Medical Committee. The samples collected at competition venue doping control stations will be transported to the WADA approved laboratory in Italy. All results will be sent to the Chairman of the FISU International Medical Committee and entered into the ADAMS system. In the event of a violation of FISU Anti-Doping rules, the responsibility of processing the results lies with the FISU International Medical Committee.



In the event of setting a national record, doping testing of the athlete is carried out at the expense of his/her National University Sports Federation.

5.9.3 DOPING CONTROL STATIONS

Doping control stations are located at each sports venue or in close proximity. All doping control stations will be marked with signs, including signage directing athletes to the stations. After the completion of the doping control procedure, all samples collected at each doping control station will be delivered to the central doping control station together with the necessary support documentation (doping control protocols) for further registration in the ADAMS system. All samples will be packaged and sent to the WADA accredited anti-doping laboratory in accordance with international standards. All information concerning the doping control program during the Torino 2025 FISU World University Games is confidential according to WADA and FISU requirements. When visiting a doping control station, athletes are required to have accreditation cards.

- The doping control station for Ski Mountaineering athletes will be located at the Via Lattea Head Quarters in Sestriere

5.9.4 THERAPEUTIC USE EXEMPTIONS (TUE)

Torino 2025 FISU World University Games participants who require Therapeutic Use Exemptions (TUE) must make an appropriate request to their National Anti-Doping Organization or International Federation before participation in the Torino 2025 FISU Games. The World Anti-Doping Agency International Standard for TUEs will be applied in this case. Every athlete who uses a substance or a method included in the list of prohibited substances is obliged to be in possession of a completed TUE form of the established standard from the moment of arrival until the departure from the Village after the Closing Ceremony of the Torino 2025 FISU World University Games.

If there is a need for the use of a prohibited substance or a prohibited method for medical reasons after the opening of the Torino 2025 FISU Games, an athlete must submit a request for TUE to the FISU International Medical Committee as a matter of urgency (antidoping@fisu.net). The responsibility for completing the TUE form and submitting an application to the FISU International Medical Committee lies with the delegation physician.

If the delegation does not have its own physician, the athlete shall submit a request for TUE to the FISU International Medical Committee (antidoping@fisu.net), with the attachment of medical documentation confirming the need for providing him/her with emergency medical treatment.

5.9.5 STRUCTURE

Chair of FISU International
Medical Committee

Dr. Dusan Hamar (SVK)



| | |
|-----------------------------|------------------------------|
| OC Head of Medical Services | Dr. Gianluca GHISELLI (ITA) |
| OC Head of Doping Control | Dr. Francesco LEONELLI (ITA) |

5.10 Mascot and Medal Ceremonies

5.10.1 MASCOT CEREMONY

The Mascot will be handed to the winners right after the confirmation of the final results. They will be asked to pose with the Mascots in hand for the Winner Picture in front of the V-board in the finish area. The winners will be announced by the Sport Presentation Speaker and the Media will be invited to take the picture or the video of the winners.

5.10.2 MEDAL CEREMONY

- The Medal Ceremonies will be held in Medal Plaza Sestriere (Piazza Fraiteve) according to the detailed day-by-day schedule as found in Section 5.7.
- The official language for the Medal Ceremonies will be English.
- The medallists from each event must attend the Medal Ceremonies. In the event that a medallist is unable to attend, the medal is delivered to an official of the relevant delegation. He/she must be dressed in the delegation's official outfit. He/she must not mount the podium but stand behind it. The official awarding the medal will hand the medal and mascot over the podium. During the FISU Anthem, the delegation official stands behind the podium.
- In the event all medallists cannot be present, the Medal Ceremony will be postponed.

During the Medal Ceremony:

- The athletes are not allowed to bring any national flag or any other national, cultural or religious symbol on the podium.
- The national flags of the first three (3) medallists will be raised and the only anthem played will be the FISU Anthem, the Gaudeamus Igitur.
- During the playing of the FISU Anthem and the raising of the flags, athletes shall face the flags and always conduct themselves in a dignified manner. No national anthem is played during the ceremony.
- Athletes are expected to take off their caps and sunglasses when receiving their medal and keep items in hand throughout the ceremony (i.e., playing of the FISU Anthem and raising of the flags).
- Athletes, authorities and accompanying persons are required to face the flags while they are being raised and the FISU Anthem is being played.



- The medallists are expected to attend the ceremony in the uniforms they wore at the Opening Ceremony but are also allowed to attend the official ceremony wearing sport uniforms when the ceremony takes place immediately following the competition.
- After the medals are awarded, athletes must remain in the awarding area for photos on the podium with medals.
- In order to get the best photos, athletes should follow the recommendations of photographers.

5.10.3 DIPLOMA OF HONOR

- The athletes ranked one (1) to eight (8) will receive a Diploma of Honor.
- For team events, each team member, from teams ranked one (1) to six (6), will receive a personal Diploma of Honor mentioning his/her name and the team ranking.
- Diplomas of Honor are not distributed at the Medal Ceremony. They will be sent in PDF format to the Head of Delegation or an appointed representative of each delegation at the end of the event.
- If an athlete or team is disqualified, the diploma(s) shall be returned to FISU.

5.11 Media Interviews

Venue Media Centres for media representatives are organized at all Torino 2025 FISU World University Games competition sites.

At the conclusion of a competition, all athletes must leave the Field of Play (FoP) through the mixed zone where brief interviews will be held. Every athlete/coach should be ready to communicate with media representatives upon their request. Team representatives should be prepared to provide their athletes with a warm jacket or a blanket prior to entering the mixed zone.

A Media Operation staff will coordinate the exchanges between athletes/coaches and media. Support for translation in English may be provided during the mixed zone interviews. If an athlete/coach does not speak this language, they should invite their team interpreter to the mixed zone.

Media conferences are held at the beginning and the end of the Torino 2025 FISU World University Games and upon necessity.

5.12 Sport Information Services

5.12.1 ONLINE SPORT INFORMATION SERVICES

Online information will be available on the Torino 2025 FISU World University Games' official website: <https://wugtorino2025.com/>



In addition, more detailed information and publications for teams can be accessed under the following link: <https://wugtorino2025.com/delegation-services/>

5.12.2 SPORT INFORMATION AT THE VENUE

A Sport Information Desk (SID) will be located at each venue, providing the most recent information related to the competitions and assisting the team representative(s) with sport-related questions.

- The Sport Information Desk will operate from 16 January 2025 until the last day of competition, in accordance with the competition and training schedules (one (1) hour before and after the events).

5.12.3 SPORT INFORMATION DISTRIBUTION

| Information | Online | Venue | Delegation Accomodation |
|---------------------------------|--------|-------|-------------------------|
| Competition Schedule | + | + | + |
| Start List/Arrival List/Results | + | + | + |
| Change to Schedule | + | + | + |
| Special Announcement | + | + | + |
| Weather Information | + | + | + |
| Medal Table | + | + | + |
| Technical Handbooks | + | + | |
| FISU Regulations | + | | |
| Transportation | | | + |
| Other Information | | + | + |
| Answer to Team Questions | | + | + |
| Day-by-Day | + | + | + |
| ITOs Services | | + | |
| Policy | + | + | |

6. SERVICE INFORMATION

6.1 Accreditation

Accreditation identifies all delegation members of the Torino 2025 FISU World University Games, enabling access to competition venues and various locations across the Piemonte region.

Accreditation also indicates and clarifies the roles and responsibilities of the participants, and available services while ensuring the safety of all participants of the Torino 2025 FISU Games Winter.



Delegation officials' accreditations are issued in accordance with FISU Regulations for the Torino 2025 Games Winter.

For the Accreditation procedure please refer to the HoD Manual.

IMPORTANT: A personalised accreditation card with a photo, name and function of the cardholder carries information about the access rights and privileges available to him/her. Upon arrival, the accreditation card, equipped with a QR-code, enables members of delegations a 24-hour temporary access to the Torino 2025 FISU World University Games venues in accordance with access rights on the accreditation card. The temporary access does not allow participation in the competition. After the CIC's approval, the accreditation card will be fully activated.

6.2 Radio Frequency Control

At all Torino 2025 FISU World University Games venues, any use of radio frequencies (e.g., walkie-talkies, radio stations, wireless cameras, Wi-Fi access points, wireless microphones, FM-transmitters, and any other wireless equipment) requires a temporary radio license from the Ministry of Economic Development (Ministero dello Sviluppo Economico, MISE) and must ensure it doesn't conflict with the Italian emergency services, including the police, EMTs (Emergency Medical Technicians), and other first responders.

If you are planning to utilize any of the items noted above which require bandwidth on the frequency spectrum, please fill out the Frequency Form linked below and send it to technology@wugtorino2025.com:

https://drive.google.com/drive/folders/1cSr-gpivLbrC41Hb_0_oEYOWpvKhZuNv

The Organising Committee will be registering a range of available Radio Frequencies starting from September 2024. We will then provide the frequencies available to each team/country to determine if their existing equipment will work within the range available in the Torino region.

Your wireless devices will be registered and checked by the frequency-organizer. You will receive a confirmation if the devices can be registered in Italy.

By the end of November, you will receive the frequencies allocated to you.

Important: Every frequency user is responsible for submitting registration details for all their wireless devices accordingly and in a timely manner.

6.3 Insurance and Responsibilities

Participating countries must adhere to the insurance requirements and conditions as stipulated in Section 5.6 of the Torino 2025 FISU World University Games Regulations.



6.4 Transportation

All information for Transportation System for Athletes and Team Officials (TA) and for Transportation Services for All Accredited Stakeholders – Transport Connect (TC) will be available in the Transportation Guide.

6.5 Food and Beverages

For Ski Mountaineering, all dining halls will be provided by the respective hotel restaurants. It is important to note that athletes and officials assigned to specific sports cannot be provided with meals at other venues.

The menu offers a wide variety of food according to the nutritional requirements of the athletes and any allergies that participants may have, comprised of:

- Italian (poultry, beef, pork, fish, vegetarian)
- International selection (varying styles of food, with poultry, beef, pork)
- Stations: full range buffet with vegetarian options: salads/ fruits/main courses/dessert
- Competition venues will have lunch and/or dinner based on the competition and official training schedule.
- A snack area will be available at each Village and competition venue.
- All dishes are indicated in English. Information cards will list the main ingredients, allergens and nutritional value.
- Large bags, luggage and sports equipment are not permitted in the dining hall. Taking food and beverage out of the Village dining areas and competition venues is prohibited. The only exceptions are coffee, tea and one (1) piece of fruit.

6.5.1 MEALTIMES

- Breakfast: 05:30-10:30
- Lunch: 11:00-16:00
- Dinner: 17:00-21:00

*The dining hall hours of operations will be adjusted to accommodate delegation's competition schedule for early morning or late-night competitions.



6.5.2 FNB SERVICES AT THE COMPETITION VENUES

- An athletes' lounge with meals will be provided one (1) hour prior to the competition until one (1) hour after the competition. This service is provided from the start of the first official training.

Lunch and/or dinner will only be served at the competition venues during official training sessions and competitions on certain days for certain delegation members. Water, dispensers for hot drinks, a table with fruit, granola bars (or other energetic snacks) and other snacks are provided in athlete lounges at competition venues.

6.6 Medical Services

6.6.1 CONDITIONS OF MEDICAL ASSISTANCE

- During the Torino 2025 FISU World University Games, in the event of life-threatening diseases and conditions or in any situations requiring urgent medical treatment, emergency medical assistance is provided to all client groups from 8-25 January 2025. Individuals that intend to arrive earlier or leave later must arrange for their own adequate travel insurance to cover medical costs. Immediate (except for emergency) and planned medical care is provided based on:
 - Immediate (except for emergency) and planned medical care is provided based on:
 - an obligatory medical insurance agreement
 - a paid medical service agreement
 - a voluntary health insurance agreement
 - health insurance

6.6.2 MEDICAL SUPPORT STRUCTURE

- Mobile medical crews in the Field of Play of the competition venues
- Medical stations for athletes and spectators at the competition venues
- Ambulance crews at the competition venues
- Dedicated hospitals and specialized medical facilities
- Trauma Centres at not competitive venues.
- Medical stations at not competition venues such as hotel and villages.

***Please refer to the Medical Services Guide for more details.**

6.6.3 MEDICAL SUPPORT IN THE ACCOMMODATION SITES

The whole territory of the event has been divided into Cluster Areas and each accommodations' site has been assigned to a Cluster Area.

Each Cluster Area will have its own Medical Station.



Additional information and locations of all villages and accommodation in the region will be available in the Medical Service Guide.

6.6.4 DEDICATED HOSPITALS AND SPECIALIZED MEDICAL FACILITIES

Specialized medical assistance, including high technology assistance, will be provided by hospitals and specialised facilities to accredited client groups of the Turin 2025 FISU World University Games.

The hospitals are open 24/7 for emergencies.

Additional information and locations of all hospitals in the region will be available in the Medical Service Guide.

6.7 Weather

For weather information visit the following link:

https://www.arpa.piemonte.it/rischi_naturali/snippets_arpa/meteo/

Otherwise, weather information can be also picked up at Sport Information Centre at each of the village or competitive Venues as well as at other locations, including on the Games website.

7. OC CONTACTS

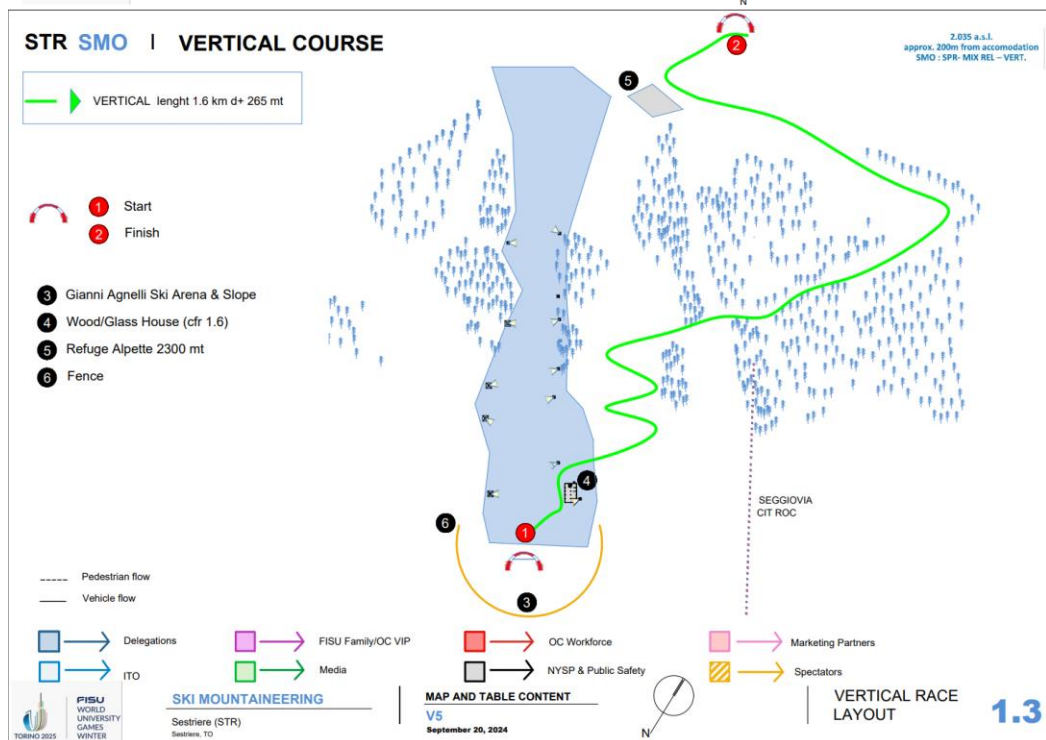
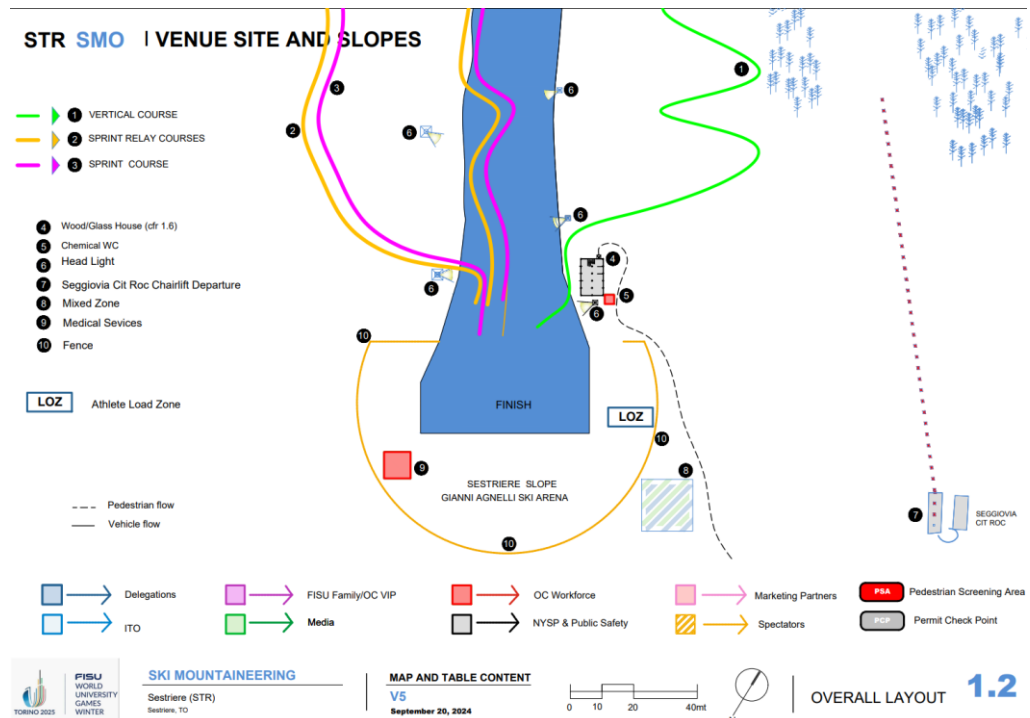
| Title | Email |
|---------------------|---|
| Accreditation | accreditationtorino2025@wugtorino2025.com |
| Sport Department | sport@wugtorino2025.com |
| Sport Entries | sportentries@wugtorino2025.com |
| Delegation Services | delegationservices@wugtorino2025.com |
| ITO Service Desk | itoservices@wugtorino2025.com |



8. APPENDICES

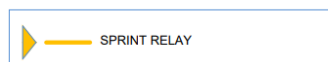
8.1 Venue Layouts

8.1.1 OVERVIEW SLOPES



STR SMO | SPRINT RELAY RACE COURSES

2.035 a.s.l.
approx. 200m from accommodation
SMO : SPR- MIX REL - VERT.



- 3 Gianni Agnelli Ski Arena & Slope
- 4 Wood/Glass House (cfr 1.6)
- 5 Bar Rifugio Alpette 2300 mt
- 6 Fence

----- Pedestrian flow
—— Vehicle flow



STR SMO | SPRINT RACE COURSE

2.035 a.s.l.
approx. 200m from accommodation
SMO : SPR- MIX REL - VERT.

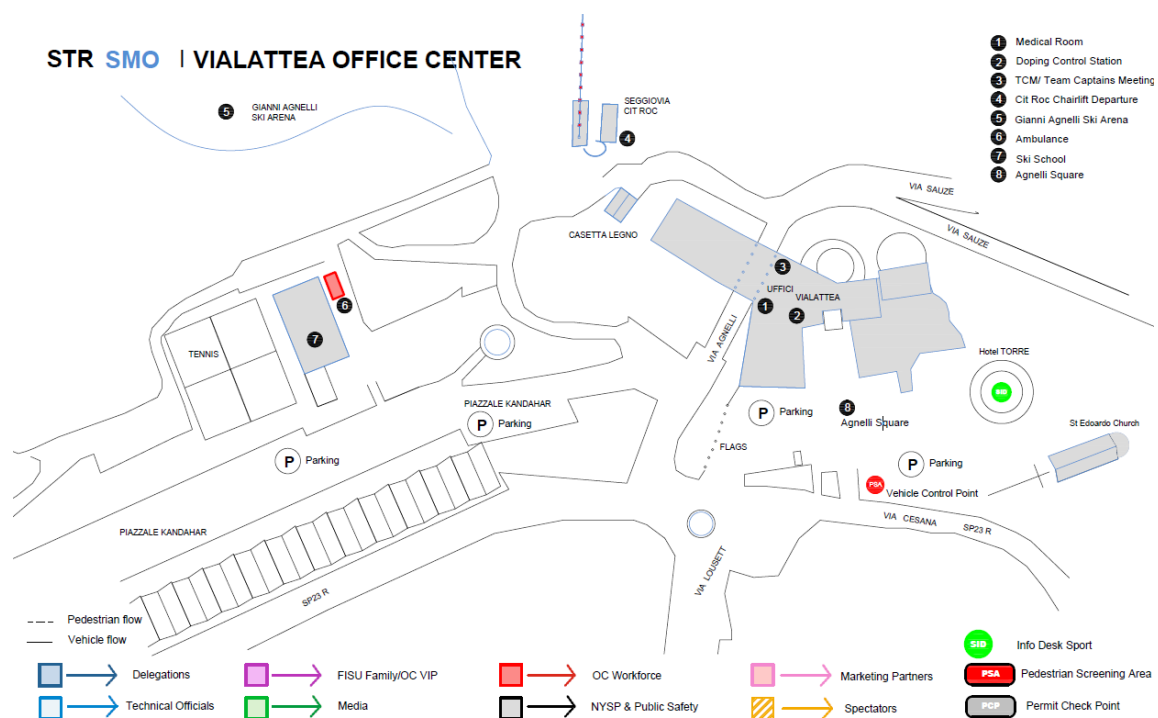


- 3 Gianni Agnelli Ski Arena & Slope
- 4 Wood/Glass House (cfr 1.6)
- 5 Refuge Alpette 2300 mt
- 6 Fence

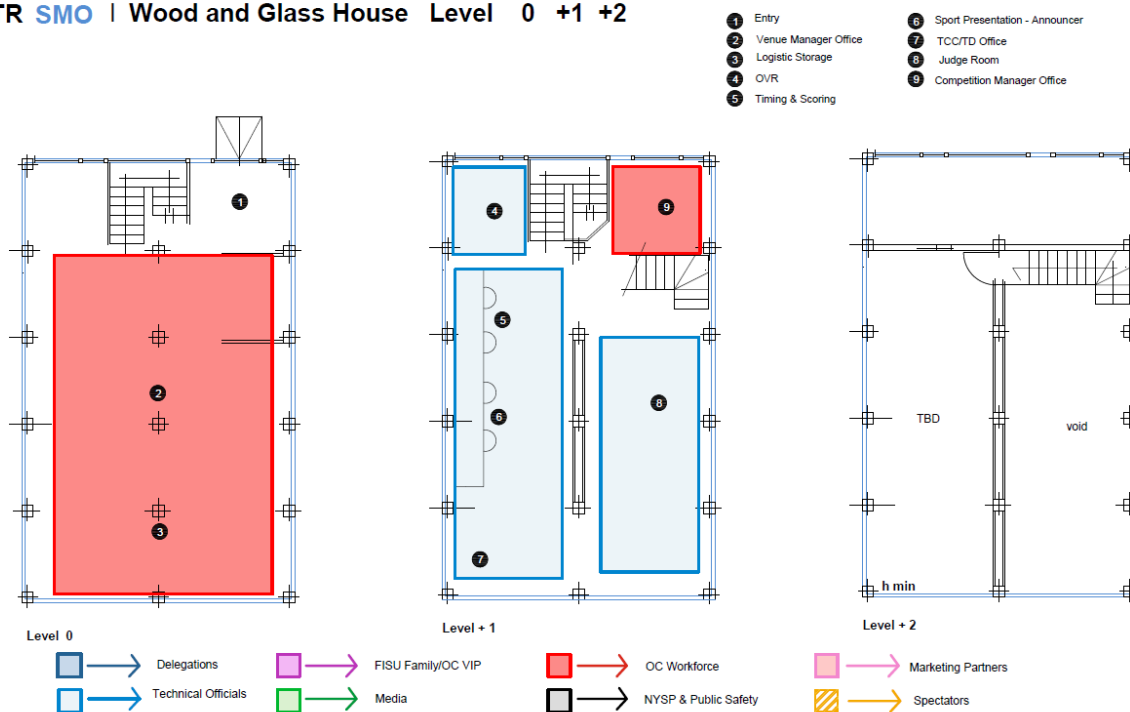
----- Pedestrian flow
—— Vehicle flow



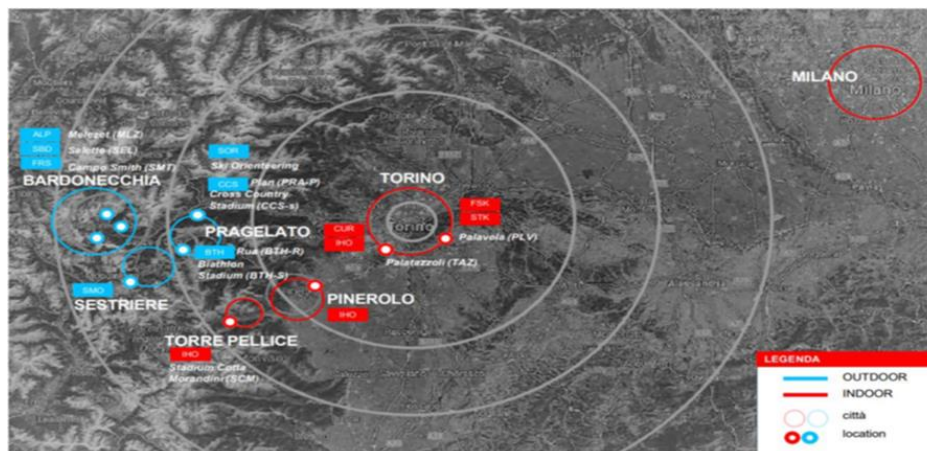
8.1.2 VENUE LAYOUTS



STR SMO | Wood and Glass House Level 0 +1 +2



8.2 Geographical Overview Venues



INSTITUTIONAL PARTNER

Evento organizzato con il supporto di



Ministro per lo Sport e i Giovani



Con il patrocinio di



MAIN SPONSOR



Assicurazioni



FISU PARTNER



OFFICIAL SPONSOR



MEDIA PARTNER



OFFICIAL SUPPLIER



OFFICIAL LOCAL MEDIA PARTNER



OFFICIAL WEATHER PARTNER

